

200CENT SERIES

TWIN ADJUSTABLE RECESSED TRIMLESS

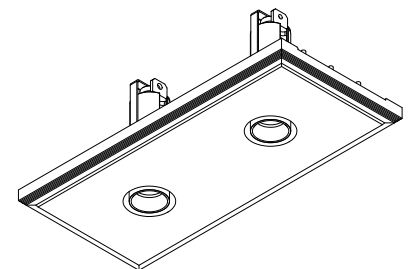
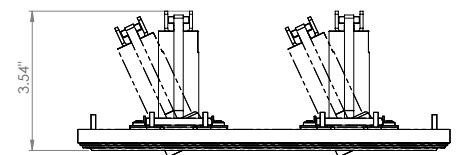
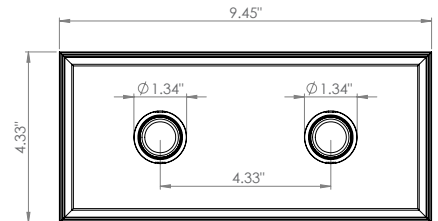
Tiny, powerful, exceptional color? It's possible with the 200Cent Series. At just 1.02" (26 mm), the aperture is the same size as a 2 Euro coin, hence its name. Available in a vast array of options (fixed, adjustable, trimless, trimmed, pendant) the 200Cent series has a fixture for every application.

TECHNICAL DATA

| | |
|---------------------------|--|
| Wattage / Input | 2x3W (1050mA), 2x5.9W (700mA), 2x6.2W (250mA) |
| Power Supply | Remote, not included. See page 2. |
| Construction | Fixture: Aluminum Body: CALCYT® |
| CCT | 2200K, 2700K, 3000K, 4000K 2400K (6.2W version only) |
| CRI | >92 |
| Delivered Lumens | 562 lm per beam (36°, 6.2W), 438 lm per beam (24°, 5.9W), 212 lm per beam (12°, 3W) All - 3000K |
| Luminaire Efficacy | 91 lm/W per beam (36°, 6.2W), 74 lm/W per beam (24°, 5.9W), 71 lm/W per beam (12°, 3W) All - 3000K |
| Optics | 12° (3W), 24° (5.9W), 36° (6.2W) on Adjustable 0 - 25° Tilt |
| Finishes | 9 Standard. See below and page 3 |
| Cut-Out Dimensions | 4.49" x 9.61" x 3.94" h |
| Fixture Dimensions | Ø1.34" x 3.54" |
| Aperture | Ø1.02" |
| LED Source | 1 A+ LED |
| Color Consistency | 2-Step MacAdam |
| IP Rating | IP20 |



Ceiling Cut-Out: 4.49" x 5.28"
Fixture Dimensions



ORDERING INFORMATION

Example: 532 29 520 200 WH GO. Accessories / Power Supplies ordered separately.

| Model No. | CCT | Finish (Fixture/Reflector) |
|---------------|-------------------------------|----------------------------|
| 532 27 (3W) | 520 - 2200K | 200 BL CR - Black/Chrome |
| 532 28 (5.9W) | - 2400K (on the 6.2W version) | 200 BL BL - Black/Black |
| 532 29 (6.2W) | 920 - 2700K | 200 BL WH - Black/White |
| | 820 - 3000K | 200 BL GO - Black/Gold |
| | 720 - 4000K | 200 BL CO - Black/Copper |
| | | 200 WH BL - White/Black |
| | | 200 WH WH - White/White |
| | | 200 WH GO - White/Gold |
| | | 200 WH CO - White/Copper |

Job Name/Date:

Fixture Type Designation:

200CENT SERIES

TWIN ADJUSTABLE RECESSED TRIMLESS

SUGGESTED POWER SUPPLIES

1050mA - 3W version (250LM)

| Part Number | Description | Input/Output | # of Fixtures |
|-----------------------------|------------------------------------|------------------------------------|---------------|
| PPLT00466-P | 0-10V Dimming to 1.0% | 120-277VAC to 1050mA, 10W Class 2 | 1-2 |
| PPLT00465-P | 0-10V Dimming to 1.0% | 120-277VAC to 1050mA, 20W Class 2 | 1-6 |
| PPLT00480-P | 0-10V Dimming to 1.0% | 120-277VAC to 1050mA, 30W Class 2 | 1-10 |
| PPLT00309-P | 0-10V Dimming to 1.0% | 120-277VAC to 1050mA, 50W Class 2 | 1-16 |
| PPLT00538-P | 0-10V Dimming to 0.1% (4 channels) | 120-277VAC to 1050mA, 100W Class 2 | 1-8 (1-32) |

700mA - 5.9W version (500LM)

| Part Number | Description | Input/Output | # of Fixtures |
|-----------------------------|--|-----------------------------------|---------------|
| PPLT00466-P | 0-10V Dimming to 1.0% | 120-277VAC to 700mA, 10W Class 2 | 1-1 |
| PPLT00470 | Phase Dim (120V Only) | 120-277VAC to 700mA, 14W Class 2 | 1-2 |
| PPLT00465-P | 0-10V Dimming to 1.0% | 120-277VAC to 700mA, 20W Class 2 | 1-3 |
| PPLT00261 | Leading / Trailing-Edge Dimming to 10% (120V only) | 120-277VAC to 700mA, 32W Class 2 | 3-5 |
| PPLT00467-P | 0-10V Dimming to 1.0% | 120-277VAC to 700mA, 50W Class 2 | 1-6 |
| PPLT00538-P | 0-10V Dimming to 0.1% (4 channels) | 120-277VAC to 700mA, 100W Class 2 | 1-4 (1-16) |

Suggested Lutron Compatible - 700mA - 5.9W version (500LM)

| Part Number | Option | Lutron SKU | Dim Range | Description | Input/Output | # of Fixtures |
|---------------------------|----------------|------------|-----------|---|-----------------------------------|---------------|
| PPLT00515 | L3DAE / L3DA3W | L3DA | 100%-1% | Hi-Lume™ 1% EcoSystem™ or 1% 3-Wire LED Driv. | 120-277VAC to 700mA, 14W, Class 2 | 1-2 |
| PPLT00517 | L3DAE / L3DA3W | L3DA | 100%-1% | Hi-Lume™ 1% EcoSystem™ or 1% 3-Wire LED Driv. | 120-277VAC to 700mA, 27W, Class 2 | 2-4 |
| PPLT00181 | L3DAE / L3DA3W | L3DA | 100%-1% | Hi-Lume™ 1% EcoSystem™ or 1% 3-Wire LED Driv. | 120-277VAC to 700mA, 38W, Class 2 | 4-5 |

250mA - 6.2W version (750LM)

| Part Number | Description | Input/Output | # of Fixtures |
|-----------------------------|--|-----------------------------------|---------------|
| PPLT00466-P | 0-10V Dimming to 1.0% | 120-277VAC to 250mA, 10W Class 2 | 1-1 |
| PPLT00290 | Leading / Trailing Edge Dimming to 10% (120V Only) | 120-277VAC to 250mA, 16W Class 2 | 1-1 |
| PPLT00465-P | 0-10V Dimming to 1.0% | 120-277VAC to 250mA, 20W Class 2 | 1-2 |
| PPLT00467-P | 0-10V Dimming to 1.0% | 120-277VAC to 250mA, 50W Class 2 | 1-2 |
| PPLT00538-P | 0-10V Dimming to 0.1% (4 channels) | 120-277VAC to 250mA, 100W Class 2 | 1-2 (1-8) |

For other power supply options consult factory.

Job Name/Date:

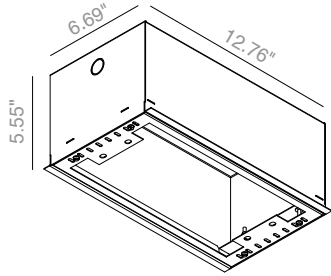
Fixture Type Designation:

200CENT SERIES

TWIN ADJUSTABLE RECESSED TRIMLESS

REQUIRED ACCESSORIES - Installation

STANDARD (included)
 installation system for ceiling 0.35" - 0.47" - 0.59"



200 99 025 (sold separately)
 Required Outer Casing
 for ceiling 0.98"

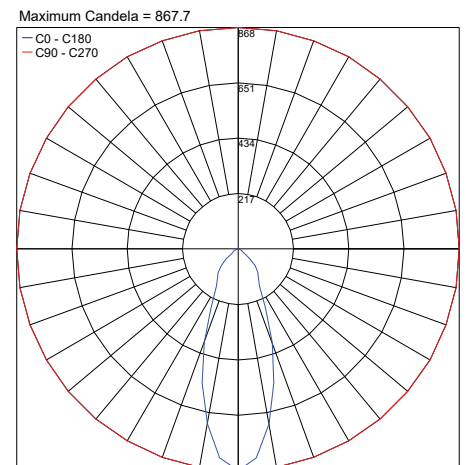
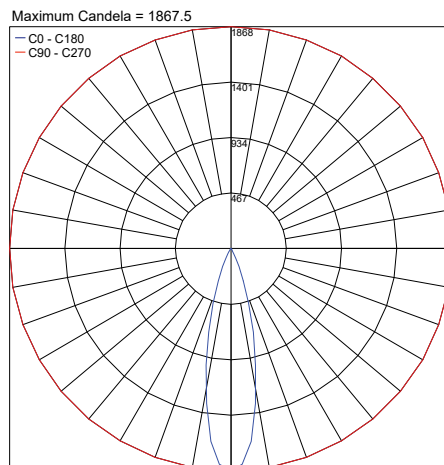
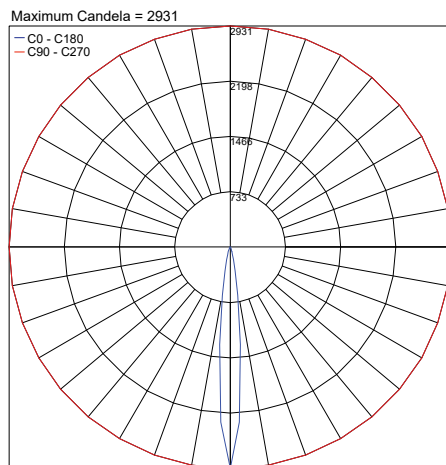
200 99 030 (sold separately)
 Required Outer Casing
 for ceiling 1.18"

FINISHES



PHOTOMETRIC DATA

Note: All photometry is 3000K



Job Name/Date:

Fixture Type Designation: