

200CENT ROUND 250LM ADJ TRIMLESS IP20

INDOOR

Adjustable 0° - 25°

□ 4.49" x 5.28" - h = 3.94"

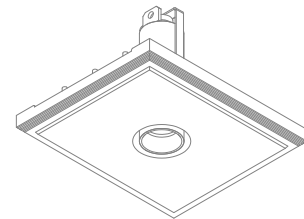
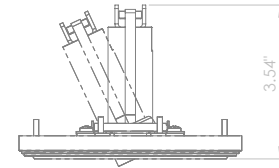
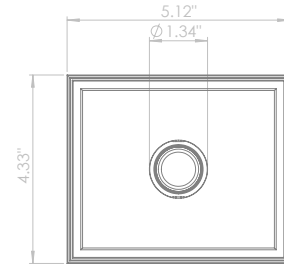
Material : CALCYT® plaster



**200CENT ROUND ADJ IP20
250LM CRI 92**

2200°K	2700°K	3000°K	4000°K
REF N° 530 27 530	REF N° 530 27 930	REF N° 530 27 830	REF N° 530 27 730

3W - 250LM - 2-Step MacAdam -
Serial wiring - 
Requires remote LED driver - 1050mA
Narrowbeam 12° - Ultra low glare (UGR < 13)

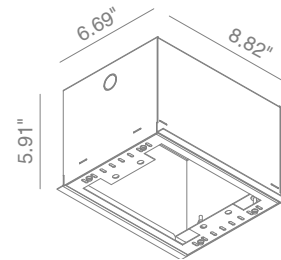


INSTALLATION KIT

STANDARD (included) installation system for ceiling 0.35" - 0.47" - 0.59"

REF N° 200 99 025 installation system for gypsum ceiling 0.98"

REF N° 200 99 030 installation system for gypsum ceiling 1.18"



BEAM ANGLES

STANDARD (included) beam angle 12°

200CENT ROUND 750LM ADJ TRIMLESS IP20

INDOOR

Adjustable 0° - 25°

4.49" x 5.28" - h = 3.94"

Material : CALCYT® plaster

REF N° 200 BL CR



Black - Chrome

REF N° 200 BL BL



Black - Black

REF N° 200 WH BL



White - Black

REF N° 200 BL WH



Black - White

REF N° 200 WH WH



White - White

REF N° 200 BL GO



Black - Gold

REF N° 200 WH GO



White - Gold

REF N° 200 BL CO



Black - Copper


REF N° 200 WH CO

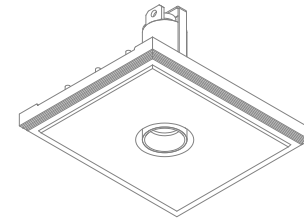
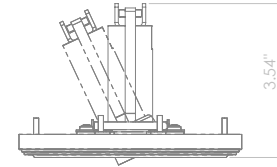
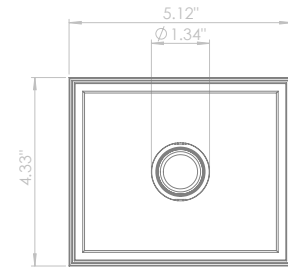


White - Copper

200CENT ROUND ADJ IP20 750LM CRI 92

2400°K	2700°K	3000°K	4000°K
REF N° 530 29 530	REF N° 530 29 930	REF N° 530 29 830	REF N° 530 29 730

6.2 W - 750LM - 2-Step MacAdam -
Serial wiring - 
Requires remote LED driver - 250mA
Standard beam angle 36°

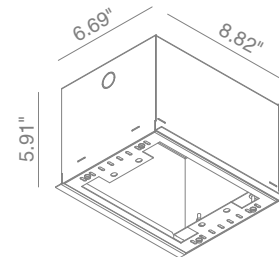


INSTALLATION KIT

STANDARD (included) installation system for ceiling 0.35" - 0.47" - 0.59"

REF N° 200 99 025 installation system for gypsum ceiling 0.98"

REF N° 200 99 030 installation system for gypsum ceiling 1.18"



BEAM ANGLES

STANDARD (included) beam angle 36°

200CENT ROUND 500LM ADJ TRIMLESS IP20

INDOOR

Adjustable 0° - 25°

4.49" x 5.28" - h = 3.94"

Material : CALCYT® plaster

REF N° 200 BL CR



Black - Chrome

REF N° 200 BL BL



Black - Black

REF N° 200 WH BL



White - Black

REF N° 200 BL WH



Black - White

REF N° 200 WH WH



White - White

REF N° 200 BL GO



Black - Gold

REF N° 200 WH GO



White - Gold

REF N° 200 BL CO



Black - Copper


REF N° 200 WH CO

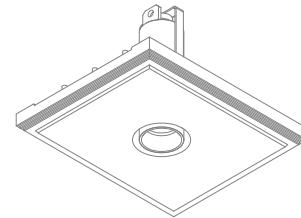
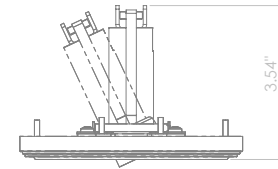
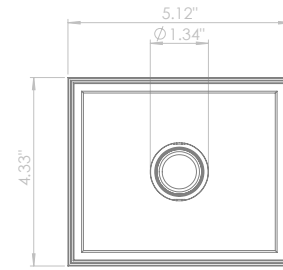


White - Copper

200CENT ROUND ADJ IP20 500LM CRI 92

2200°K	2700°K	3000°K	4000°K
REF N° 530 28 530	REF N° 530 28 930	REF N° 530 28 830	REF N° 530 28 730

5.9W - 500LM - 2-Step MacAdam -
Serial wiring - 
Requires remote LED driver - 700mA
Perfect beam 24° - Ultra low glare (UGR < 13)

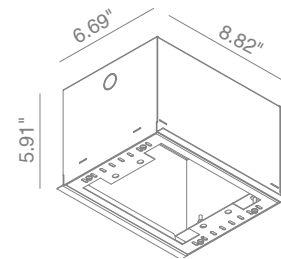


INSTALLATION KIT

STANDARD (included) installation system for ceiling 0.35" - 0.47" - 0.59"

REF N° 200 99 025 installation system for gypsum ceiling 0.98"

REF N° 200 99 030 installation system for gypsum ceiling 1.18"



BEAM ANGLES

STANDARD (included) beam angle 24°

