

200CENT ROUND 250LM FIX TRIMLESS IP20

INDOOR

Fix (not adjustable) 0° - 0°

4.49" x 5.28" - h = 3.54"

Material : CALCYT® plaster



REF N° 200 BLACK

Black



REF N° 200 WHITE

White



REF N° 200 CHROME

Chrome



REF N° 200 GOLD

Gold



REF N° 200 COPPER

Copper

200CENT ROUND IP20 250LM CRI 92

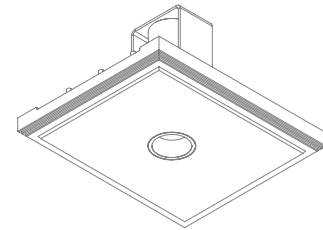
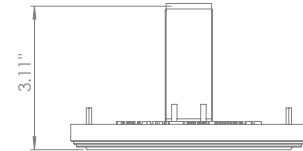
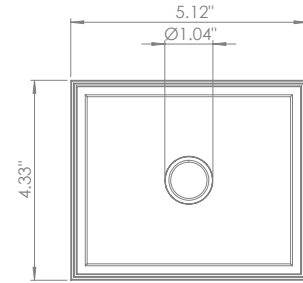
2200°K	2700°K	3000°K	4000°K
REF N° 250 27 530	REF N° 250 27 930	REF N° 250 27 830	REF N° 250 27 730

3W - 250LM - 2 Step MacAdam -

Serial wiring -  - 

Requires remote LED driver - 1050mA

Narrowbeam 12°-Ultralowglare(UGR<13)



INSTALLATION KIT

STANDARD (included) installation system for ceiling 0.35" - 0.47" - 0.59"

REF N° 200 99 025 installation system for gypsum ceiling 0.98"

REF N° 200 99 030 installation system for gypsum ceiling 1.18"

BEAM ANGLES

STANDARD (included) beam angle 12°

200CENT ROUND 500LM FIX TRIMLESS IP20

INDOOR

Fix (not adjustable) 0° - 0°

4.49" x 5.28" - h = 3.54"

Material : CALCYT® plaster



REF N° 200 BLACK

Black



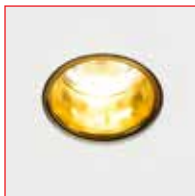
REF N° 200 WHITE

White



REF N° 200 CHROME

Chrome



REF N° 200 GOLD

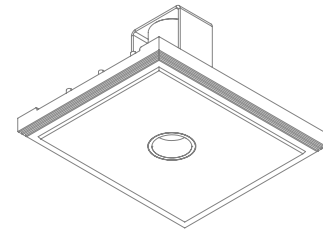
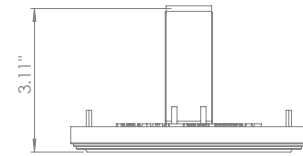
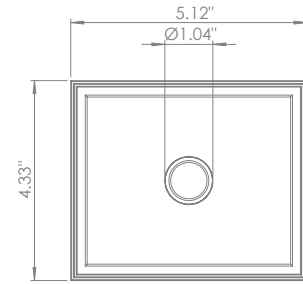
Gold



REF N° 200 COPPER

Copper

200CENT ROUND IP20 500LM CRI 92			
2200°K	2700°K	3000°K	4000°K
REF N° 250 28 530	REF N° 250 28 930	REF N° 250 28 830	REF N° 250 28 730
5.9W - 500LM - 2 Step MacAdam - Serial wiring -  Requires remote LED driver - 700mA Perfect beam 24° - Ultra low glare (UGR < 13)			



INSTALLATION KIT

STANDARD (included) installation system for ceiling 0.35" - 0.47" - 0.59"

REF N° 200 99 025 installation system for gypsum ceiling 0.98"

REF N° 200 99 030 installation system for gypsum ceiling 1.18"

BEAM ANGLES

STANDARD (included) beam angle 24°

200CENT ROUND 750LM FIX TRIMLESS IP20

INDOOR

Fix (not adjustable) 0° - 0°

4.49" x 5.28" - h = 3.54"

Material : CALCYT® plaster



REF N° 200 BLACK

Black



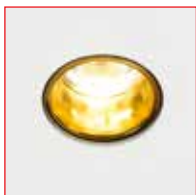
REF N° 200 WHITE

White



REF N° 200 CHROME

Chrome



REF N° 200 GOLD

Gold




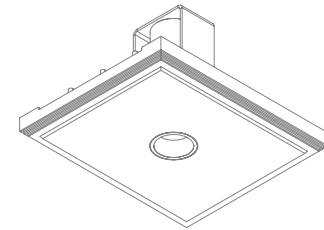
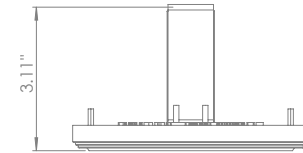
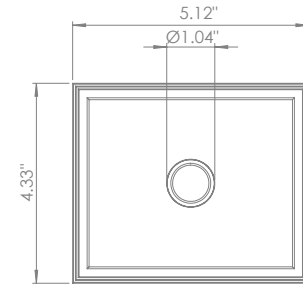
REF N° 200 COPPER

Copper

200CENT ROUND IP20 750LM CRI 92

2400°K	2700°K	3000°K	4000°K
REF N° 250 29 530	REF N° 250 29 930	REF N° 250 29 830	REF N° 250 29 730

6.2W - 750LM - 2 Step MacAdam -
Serial wiring - 
Requires remote LED driver - 250mA
Standard beam angle 36°



INSTALLATION KIT

STANDARD (included) installation system for ceiling 0.35" - 0.47" - 0.59"

REF N° 200 99 025 installation system for gypsum ceiling 0.98"

REF N° 200 99 030 installation system for gypsum ceiling 1.18"

BEAM ANGLES

STANDARD (included) beam angle 36°

