

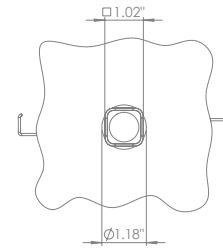
200CENT SQUARE 250LM SWING 90 TRIM IP20

INDOOR

Adjustable 0° - 90°

□ Ø1.06" - h = 2.76"

Material : Aluminum



200CENT SQUARE SWING 90 250LM CRI 92

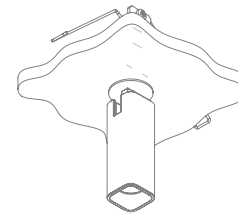
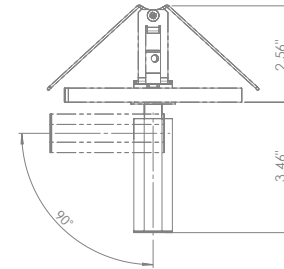
2200°K	2700°K	3000°K	4000°K
REF N° 563 27 530	REF N° 563 27 930	REF N° 563 27 830	REF N° 563 27 730

3W - 250lm - 2 Step MacAdam -

Serial wiring - □ - ■

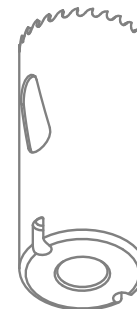
Requires remote LED driver - 1050mA

Narrowbeam 12° - Ultra low glare (UGR < 13)



INSTALLATION KIT

REF N° 680 01 027 standard holesaw Ø1.06"



BEAM ANGLES

STANDARD (included) beam angle 12°

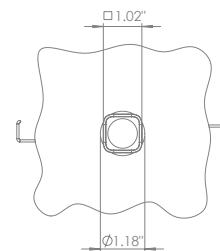
200CENT SQUARE 500LM SWING 90 TRIM IP20

INDOOR

Adjustable 0° - 90°

□ ∅1.06" - h = 2.76"

Material : Aluminum

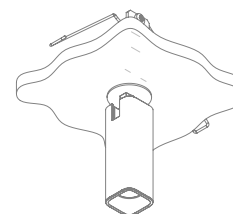
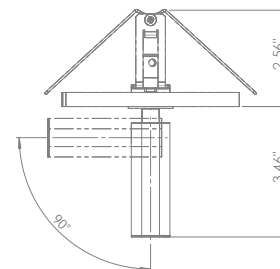


200CENT SQUARE SWING 90 500LM CRI 92

2200°K	2700°K	3000°K	4000°K
REF N° 563 28 530	REF N° 563 28 930	REF N° 563 28 830	REF N° 563 28 730

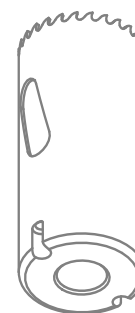
5.9W - 500lm - 2 Step MacAdam - Serial wiring - □ - ◻

Requires remote LED driver - 700mA
Perfect beam 24° - Ultra low glare (UGR < 13)



INSTALLATION KIT

REF N° 680 01 027 standard holesaw ∅1.06"



BEAM ANGLES

STANDARD (included) beam angle 24°

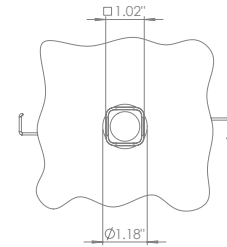
200CENT SQUARE 750LM SWING 90 TRIM IP20

INDOOR

Adjustable 0° - 90°

☐ Ø1.06" - h = 2.76"

Material : Aluminum



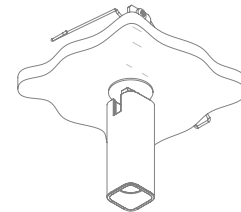
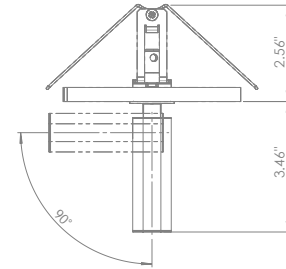
200CENT SQUARE SWING 90 750LM CRI 92

2400°K	2700°K	3000°K	4000°K
REF N° 563 29 530	REF N° 563 29 930	REF N° 563 29 830	REF N° 563 29 730

6.2W - 750lm - 2 Step MacAdam - Serial wiring - ☐ - ☐

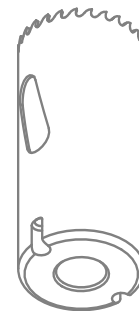
Requires remote LED driver - 250mA

Standard beam angle 36°



INSTALLATION KIT

REF N° 680 01 027 standard holesaw Ø1.06"



BEAM ANGLES

STANDARD (included) beam angle 36°

