

200CENT ROUND 750LM W30 SEMI TRIMLESS IP20

INDOOR

Fix (not adjustable) Asymmetric 30°

□ 4.49" x 5.28" - h = 3.35"

Material : CALCYT® plaster



REF N° 200 BL CR

Black - Chrome



REF N° 200 BL BL

Black - Black



REF N° 200 WH BL

White - Black



REF N° 200 BL WH

Black - White



REF N° 200 WH WH

White - White



REF N° 200 BL GO

Black - Gold



REF N° 200 WH GO

White - Gold



REF N° 200 BL CO

Black - Copper



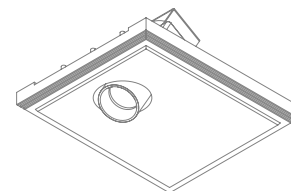
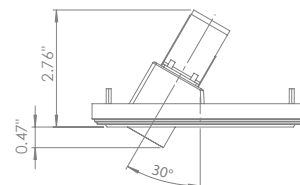
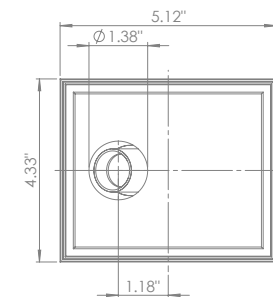
REF N° 200 WH CO

White - Copper

200CENT ROUND W30 IP20 750LM CRI 92

2400°K	2700°K	3000°K	4000°K
REF N° 511 19 520	REF N° 511 19 920	REF N° 511 19 820	REF N° 511 19 720

6.2 W - 750LM - 2-Step MacAdam -
Serial wiring - 
Requires remote LED driver - 250mA
Standard beam angle 36°

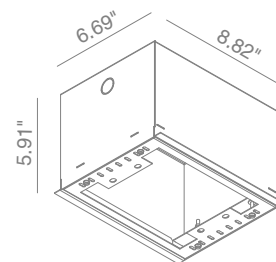


INSTALLATION KIT

STANDARD (included) installation system for ceiling 0.35" - 0.47" - 0.59"

REF N° 200 99 025 installation system for gypsum ceiling 0.98"

REF N° 200 99 030 installation system for gypsum ceiling 1.18"



BEAM ANGLES

STANDARD (included) beam angle 36°

200CENT ROUND 500LM W30 SEMI TRIMLESS IP20

INDOOR

Fix (not adjustable) Asymmetric 30°

□ 4.49" x 5.28" - h = 3.35"

Material : CALCYT® plaster

REF N° 200 BL CR



Black - Chrome

REF N° 200 BL BL



Black - Black

REF N° 200 WH BL



White - Black

REF N° 200 BL WH



Black - White

REF N° 200 WH WH



White - White

REF N° 200 BL GO



Black - Gold

REF N° 200 WH GO



White - Gold

REF N° 200 BL CO



Black - Copper


REF N° 200 WH CO

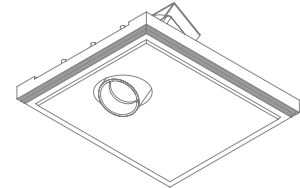
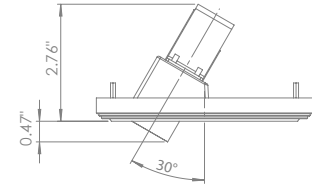
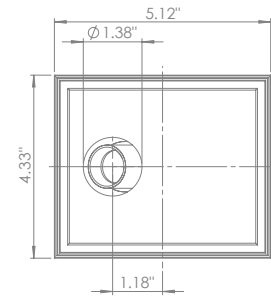


White - Copper

200CENT ROUND W30 IP20 500LM CRI 92

2200°K	2700°K	3000°K	4000°K
REF N° 511 18 520	REF N° 511 18 920	REF N° 511 18 820	REF N° 511 18 720

5.9 W - 500LM - 2-Step MacAdam -
Serial wiring - 
Requires remote LED driver - 700mA
Perfect beam 24° - Ultra low glare (UGR < 13)

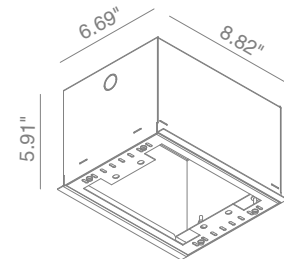


INSTALLATION KIT

STANDARD (included) installation system for ceiling 0.35" - 0.47" - 0.59"

REF N° 200 99 025 installation system for gypsum ceiling 0.98"

REF N° 200 99 030 installation system for gypsum ceiling 1.18"



BEAM ANGLES

STANDARD (included) beam angle 24°

200CENT ROUND 250LM W30 SEMI TRIMLESS IP20

INDOOR

Fix (not adjustable) Asymmetric 30°

□ 4.49" x 5.28" - h = 3.35"

Material : CALCYT® plaster

REF N° 200 BL CR



Black - Chrome

REF N° 200 BL BL



Black - Black

REF N° 200 WH BL



White - Black

REF N° 200 BL WH



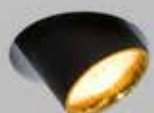
Black - White

REF N° 200 WH WH



White - White

REF N° 200 BL GO



Black - Gold

REF N° 200 WH GO



White - Gold

REF N° 200 BL CO



Black - Copper

REF N° 200 WH CO



White - Copper

200CENT ROUND W30 IP20 250LM CRI 92

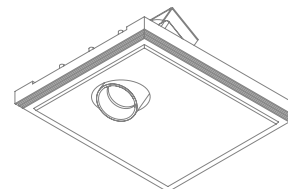
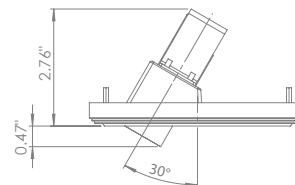
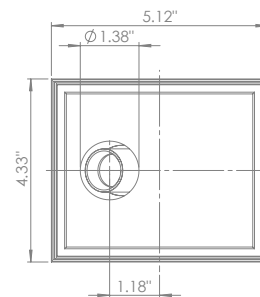
2200°K	2700°K	3000°K	4000°K
REF N° 511 17 520	REF N° 511 17 920	REF N° 511 17 820	REF N° 511 17 720

3W - 250LM - 2-Step MacAdam -

Serial wiring - 

Requires remote LED driver - 1050mA

Narrow beam 12° - Ultra low glare (UGR < 13)

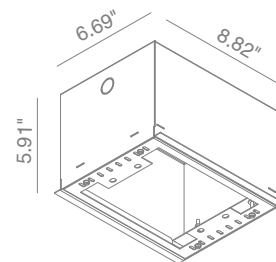


INSTALLATION KIT

STANDARD (included) installation system for ceiling 0.35" - 0.47" - 0.59"

REF N° 200 99 025 installation system for gypsum ceiling 0.98"

REF N° 200 99 030 installation system for gypsum ceiling 1.18"



BEAM ANGLES

STANDARD (included) beam angle 12°

