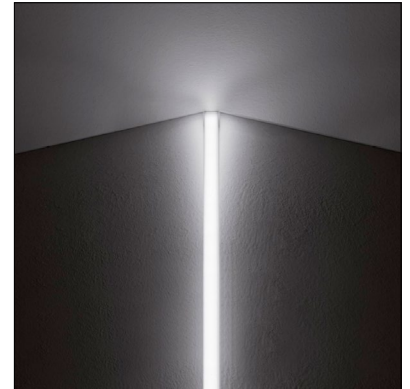


A3-65 and A3-E

A3-65 and A3-E are recessed linear profiles designed for flush installation on plasterboard ceilings and wall edges. A3-65 is IP65-rated and comes in 4 standard pre-cut lengths, while A3-E is IP40-rated and custom cuttable in the field. Both are anodized aluminum with diffused optics and available in 3 color temperatures. Can be used on false ceilings with appropriate accessories.



Fixture Dimensions - See page 2

TECHNICAL DATA

Wattage	14.4W per 3.28 ft (1 m)
Power Supply	Remote, not included. Consult Factory.
Construction	Body: Anodized Aluminum Cable Length: 1.64' (connected at rear)
CCT	2700K, 3000K, 4000K
Delivered Lumens	1070 lm per 3.28' (3000K)
Efficacy	74.3 lm/W per 3.28" (3000K)
Optics	Diffuse
Finishes	Anodized Aluminum
Fixture Dimensions	19.7", 39.4", 59.1", 78.7" l x 2.1" w x 1.0" h (A3-65) 196.9" maximum length x 2.1" w x 1.0" h (A3-E)
Aperature	0.4" x length
Color Consistency	<3-Step MacAdam
IP Rating	IP65 (A3-65) IP40 (A3-E)
Impact Resistance	IK08

ORDERING INFORMATION

Example: LM04.104559.US.03.DI.BPP. Accessories / Power Supplies ordered separately.

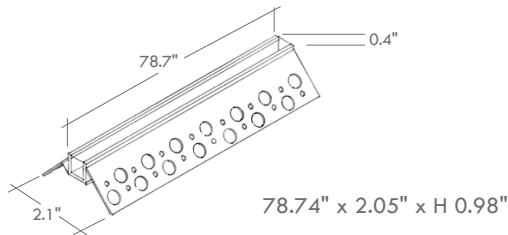
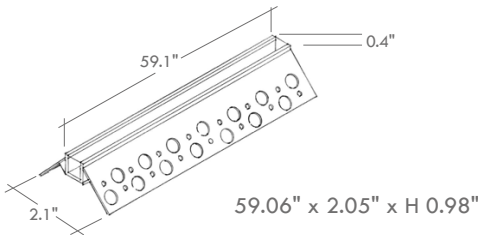
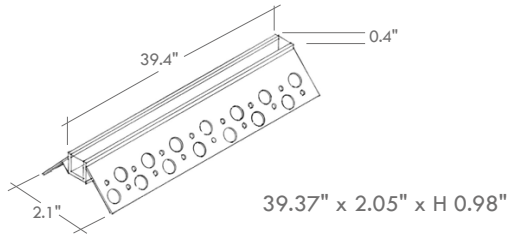
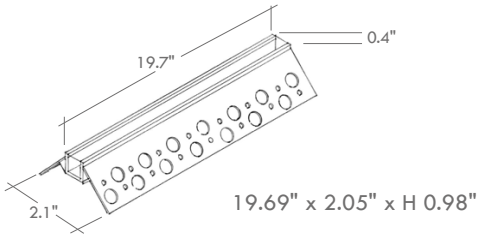
	03			
Model No.	Finish	Optic	CCT	Cable Exit
LM04.104559.US (19.7" length)	03 - Anodized Aluminum	DI - Diffuse	BC - 2700K	P - Rear Exit
LM04.104560.US (39.4" length)			BP - 3000K	
LM04.104561.US (59.1" length)		DP - Perpendicular Diffuse	BF - 4000K	Circuit Power 15 - 14.4W/3.28 ft
LM04.104562.US (78.7" length)				
LM30.104543.US (LED Circuit Reel) <i>Profile housing sold separately and can be found under installation accessories on page 2</i>				

Job Name/Date:

Fixture Type Designation:

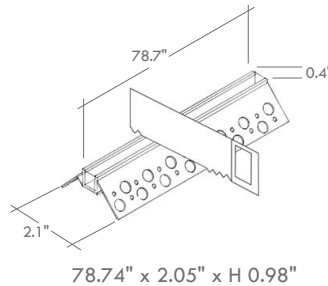
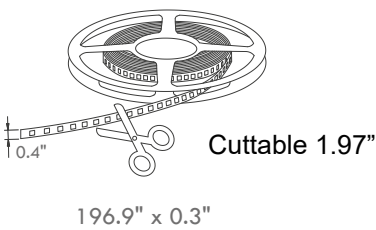
FIXTURE DIMENSIONS - A3-65

Standard Lengths



FIXTURE DIMENSIONS - A3-E

Custom Cuttable

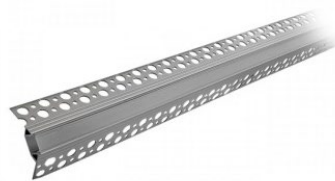


ACCESSORIES - Installation



SOLD INDIVIDUALLY
 Order 2 per fixture

LM20.104567
 Closing end cap



LM30.104564.US
 (78.7" length)
 Housing for Custom Cuttable

Job Name/Date:

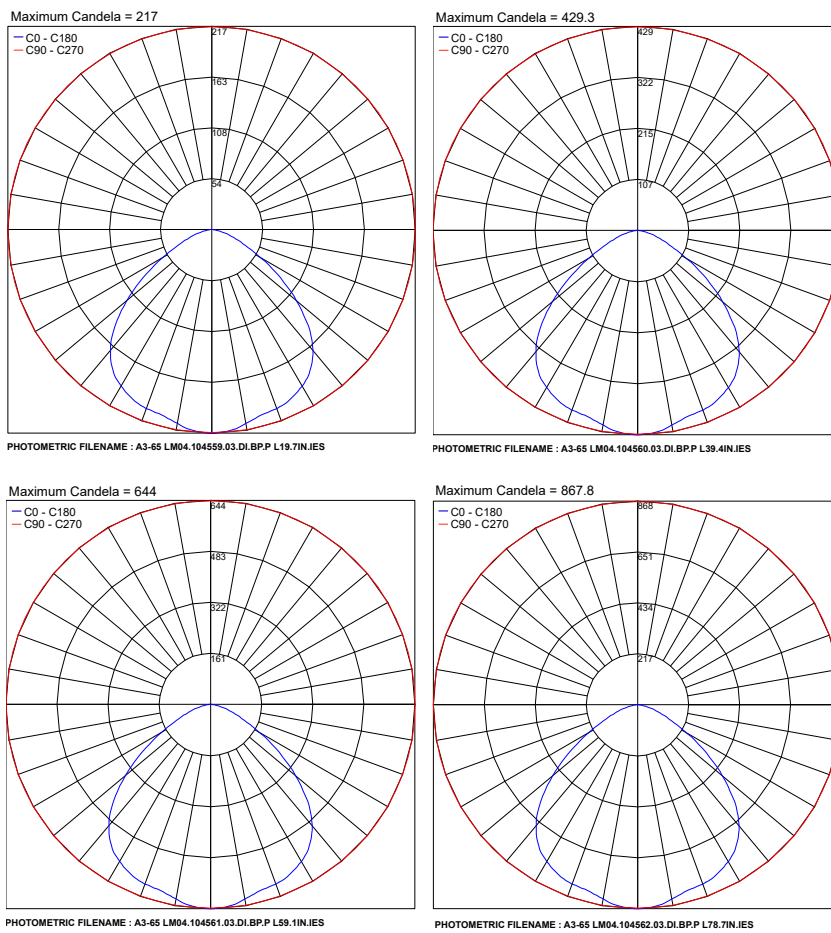
Fixture Type Designation:

SUGGESTED POWER SUPPLIES

Consult Factory

PHOTOMETRIC DATA

Note: All photometric data is 3000K



Job Name/Date:

Fixture Type Designation: