



# Big Slide

## LED Downlight

Big Slide is an efficient recessed LED downlight. The fixture is made from machined aluminum and has a threaded, removable optic cap to accommodate the addition of color filters. A free-rotating ball assembly offers aiming adjustability. The sliding focus is lockable, changing from narrow spot to wide flood. Big Slide comes in three finishes: brushed aluminum and black anodized. Made in the U.S.A.



79 Trenton Avenue  
Frenchtown, NJ 08825

[www.designplan.com](http://www.designplan.com)

Tel: (908) 996-7710  
Fax: (908) 996-7042



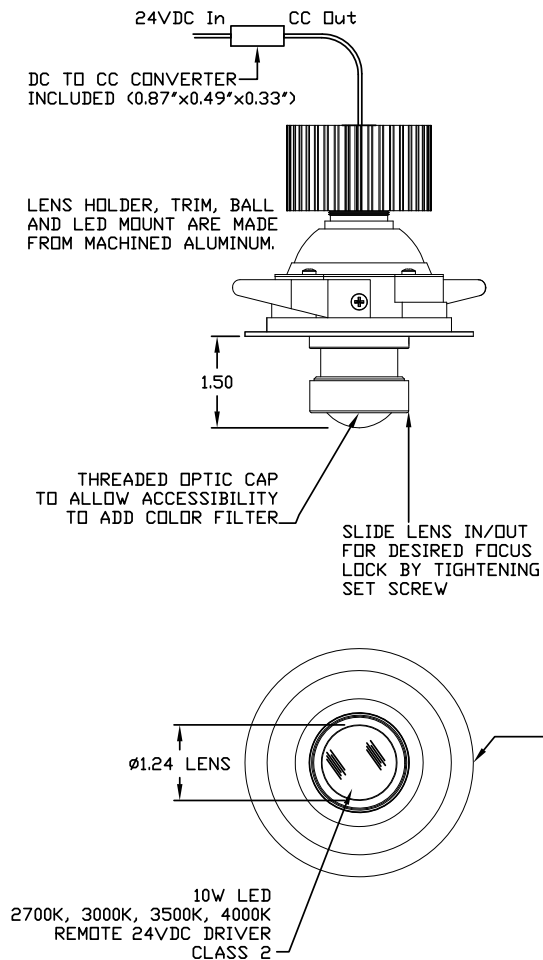
- Aluminum construction
- Brushed aluminum, black anodized finishes
- 10W
- Remote 24VDC power supply
- Adjustable neck to allow changing from a narrow spot to wide flood
- Tilt angle 30°
- 2700K, 3000K, 3500K, 4000K color temperatures available
- CRI 80
- Made in the U.S.A.
- Complies with LM79-LM80
- Listed IP20 for indoor use



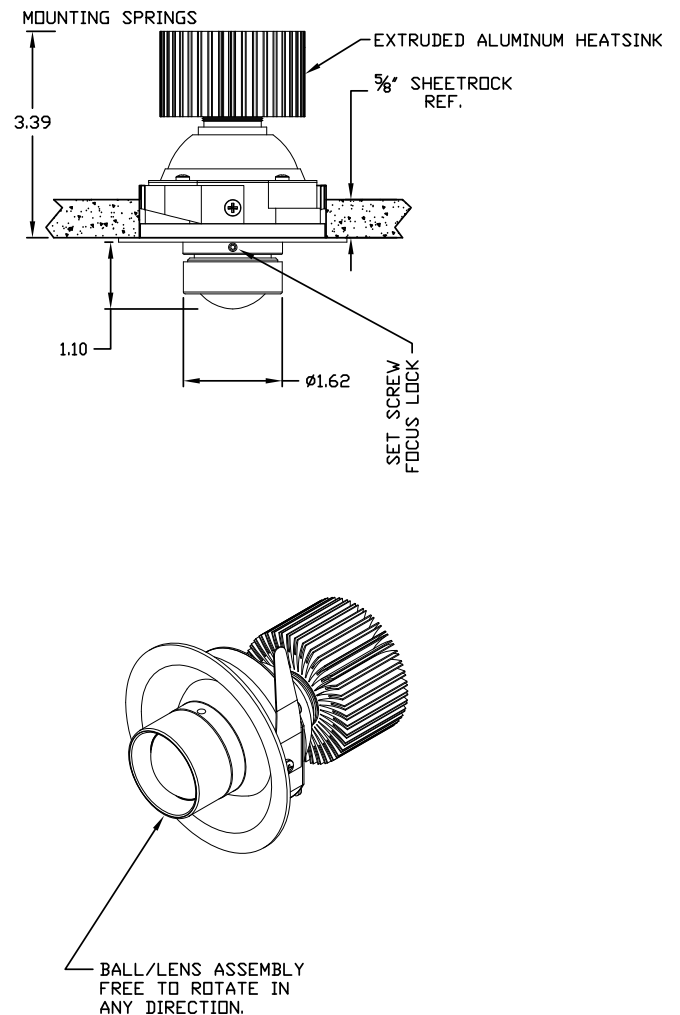
# Big Slide

## TECHNICAL DRAWING

### Lens Assembly Extended

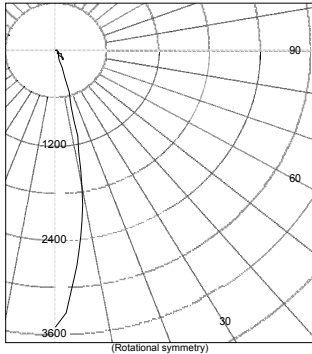


### Lens Assembly Retracted



# PHOTOMETRIC DATA

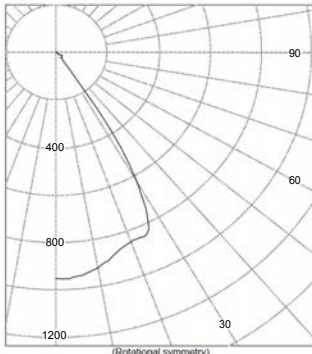
## Lens Assembly Extended



Legend: All planes - Solid (cd)

Circle of Light Plot			
Height(ft)	Illuminance at Nadir (fc)	Beam Width (across 50% Nadir Illum)	
		0-180	90-270
6.0	97.7	2.05	2.05
8.0	54.9	2.74	2.74
10.0	35.2	3.42	3.42
12.0	24.4	4.10	4.10
14.0	17.9	4.79	4.79
16.0	13.7	5.47	5.47

## Lens Assembly Retracted



Legend: All planes - Solid (cd)

Circle of Light Plot			
Height(ft)	Illuminance at Nadir (fc)	Beam Width (across 50% Nadir Illum)	
		0-180	90-270
6.0	26.5	6.58	6.58
8.0	14.9	8.77	8.77
10.0	9.6	10.96	10.96
12.0	6.6	13.15	13.15
14.0	4.9	15.35	15.35
16.0	3.7	17.54	17.54

## ORDERING INFORMATION

Series XXX-	LED Module XXXX	Lens X	Driver X	Finish XX
BGS-Big Slide	1027-1000lm/ 2700K 1030-1000lm/ 3000K 1035-1000lm/ 3500K 1040-1000lm/ 4000K	O-Optical Silicone	X-Remote 24VDC Driver	BA-Brushed Aluminum 97-Black Anodized
			Note: Remote driver ordered separately	

### POWER SUPPLY ENCLOSURE:



#### PPWD00467

Empty power supply enclosure  
11.8" x 9.84" x 5.91"

Optional power supply enclosure by Designplan **OR** by others.  
Must comply with UL, ETL, and local electrical codes.

