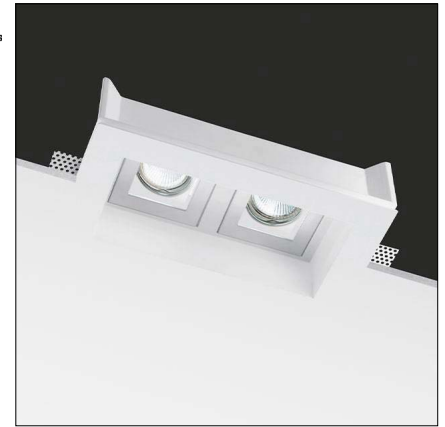


Bitrix is a totally recessed indoor luminaire, made of AirCoral®, that is adjustable up to $\pm 30^\circ$. It is available in 3000K standard and is suitable for installation in plaster ceilings.



TECHNICAL DATA

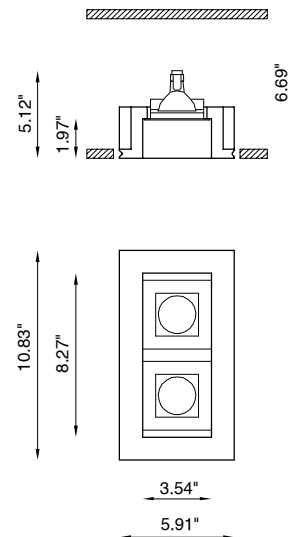
| | |
|---------------------------|-----------------------------------|
| Wattage / Input | 9W per beam (500mA) |
| Power Supply | Remote, not included. See page 2. |
| Construction | Body: AirCoral® |
| CCT | 3000K 2700K, 4000K on request |
| CRI | >90 |
| Initial Lumens | 1125 lm per beam (3000K) |
| Efficacy | Coming Soon |
| Optics | 40° |
| Finishes | AirCoral® Plaster |
| Fixture Dimensions | 10.83" l x 5.91" w x 5.12" h |
| Cutout Dimensions | 11.22" x 6.30" |
| Aperature | 8.27" x 3.54" |
| Fixture Weight | 4.41 lbs |
| IP Rating | IP20 |

The body is made of AirCoral® a unique patented composite material that actually purifies the air. It can be calculated how many cubic feet each fixture will purify. See website for AirCoral® calculator.

Additionally, AirCoral® is:

- Antibacterial.
- Antifungal.
- Scratch-resistant.
- Dust-resistant.
- Suitable for painting.
- LEED recognized material.

Fixture Dimensions



ORDERING INFORMATION

Example: BU6343.Z.AC.30.US. Power supplies ordered separately.

| | | | |
|------------------|-----------------------|--|------------|
| BU6343.Z | AC | | .US |
| Model No. | Material | CCT | |
| BU6343.Z | AC - AirCoral® | 30 - 3000K (standard) 27 - 2700K (on request) 40 - 4000K (on request) | .US |

Job Name/Date:

Fixture Type Designation:

SUGGESTED POWER SUPPLIES

500mA

| Part Number | Description | Input/Output | Fixtures |
|-----------------------------|-----------------------|--|----------|
| PPLT00527 | Phase Dim (120V only) | 120VAC to 500mA, 25W, Class 2, IP66 | 1-1 |
| PPLT00308-P | 0-10V Dimming to 0.1% | 120-277VAC to 500mA, 30W, Class 2 | 1-1 |
| PPLT00467-P | 0-10V Dimming to 1.0% | 120-277VAC to 500mA, 50W, Class 2, DAMP | 1-1 |
| PPLT00538-P | 0-10V Dimming to 0.1% | 120-277VAC to 500mA, 100W, Class 2, DAMP | 1-4 |

Suggested Lutron Compatible

| Part Number | Option | Lutron SKU | Dim Range | Description | Input/Output | # of Fixtures |
|---------------------------|----------------|------------|-----------|--|-----------------------------------|---------------|
| PPLT00180 | L3DAE / L3DA3W | L3DA | 100%-1% | Hi-Lume™ 1% EcoSystem™ or 1% 3-Wire LED Driver | 120-277VAC to 500mA, 27W, Class 2 | 1-1 |

For other power supply options consult factory.

PHOTOMETRIC DATA

*Coming Soon**Job Name/Date:**Fixture Type Designation:*