

BRIGHT 2.5

The Bright 2 series are small, powerful and versatile fixtures. Available in numerous optics, styles and anti-glare accessories, this fixture can be installed in-grade, wall mount or ceiling mount. Suitable for power washing. **The Bright 2, Smoothy 2 and Litus 2 series all use the same LED.**

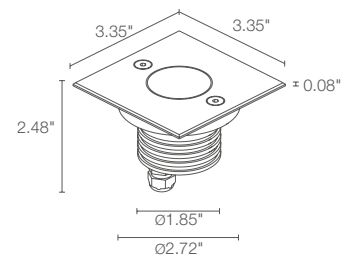
TECHNICAL DATA

Wattage / Input	5W, 7W (24VDC), 5W (500mA, RGB)
Power Supply	Remote, not included. See page 2.
Construction	Body/Trim: Anodized Aluminum/Stainless Steel Lens: Tempered Extra-Clear Glass
CCT	2700K, 3000K, 4000K; RGB (3500K on request - not available on 8° or 21°x42° optics)
CRI	>80, >90
BUG Rating	B0-U2-G0 (3000K, 5W, 24VDC, Z) B0-U3-G0 (3000K, 5W, 24VDC, All optics except Z) B0-U3-G0 (3000K, 5W, 500mA, All optics) B0-U3-G0 (3000K, 7W, 24VDC, All optics)
Delivered Lumens	See Delivered Lumens Chart 191 lm: (R) 70 lm, (G) 90 lm, (B) 31 lm
Efficacy	57-70 lm/W (5W), 53-66 lm/W (7W), 38 lm/W (RGB)
Optics	12 Standard (White), 4 Standard (RGB)
Finishes	3 Standard (See below)
Fixture Dimensions	Ø3.39" x 2.48" h
Cut-out Size	Ø2.76" (for ceiling or wall installations)
Fixture Weight	0.97 lbs (Stainless Steel) 0.73 lbs (Aluminum)
LED Source	1 High-Intensity Power LED (White) 3 Power LEDs (RGB)
Lumen Maintenance	L90, B10 >50,000hrs (Ta 25°C)
Color Consistency	3-Step MacAdam (White)
Operating Temp.	-4°F to +113°F
IP Rating	IP68, IP69 (Tested to EN / IEC 60598-1)
IK Rating	IK10



Cutout Dimensions for ceiling/wall installations with fixing spring = Ø2.76"

Fixture Dimensions



Delivered Lumens (3000K, 34°)	5W	7W
CRI 80	352 lm	463 lm
CRI 90	284 lm	374 lm

ORDERING INFORMATION

Example: CB25001FTAI or CB25001FTAI-1. Accessories / Power Supplies ordered separately.

Model No.	CRI	CCT	Optics	Finish (Body/Trim)	Cable Length
CB2500 - 5W	0 - 80 CRI	F - 2700K	Z - Asymmetrical 8° M - 34° W - 13°x52°	AI - Aluminum/SS	4.92' standard
CB2501 - 7W	1 - 90 CRI	5 - 3000K	V - 8° L - 45° D - Diffuse	II - SS / SS	1 - 16.40'
Static White Only		9 - 4000K	T - 11° J - 47°	Note* SS: Stainless Steel	2 - 32.81'
			S - 17° Q - 61° sharp		3 - 49.21'
			P - 21° sharp K - 68°		4 - 65.62'
Model No.	CRI	CCT	Optics		
CB2532 - 5W		6 - RGB	S - 20° L - 45°		
RGB Only			M - 34° W - 21°x42°		

Job Name/Date:

Fixture Type Designation:

SUGGESTED POWER SUPPLIES 24VDC

Part Number	Description	Input/Output	# of Fixtures 5W / 7W	
PPLT00632	0-10V Dimming (Dim to Off)	120-277VAC to 24VDC, 12W, Class 2	1-1	1-1
PPLT00056	Non-Dim	120-277VAC to 24VDC, 26W, Class 2, IP66	1-4	1-2
PPLT00586	Non-Dim	120-277VAC to 24VDC, 40W, Class 2	1-6	1-4
PPLT00158	Non-Dim	120VAC to 24VDC, 100W, Class 2	1-16	1-11
PPLT00543	0-10V Dimming to 15% (-40°C / -40°F cold weather start)	120-277VAC to 24VDC, 100W, Class 2	2-16	2-11

Suggested Lutron Compatible

Part Number	Option	Lutron SKU	Dim Range	Description	Input/Output	# of Fixtures 5W 7W	
PPLT00273	L3DAE / L3DA3W	L3DA	100%-1%	Hi-Lume™ 1% EcoSystem™ or 1% 3-Wire LED Driver	120-277VAC to 24VDC, 40W, Class 2	1-6	1-4
PPLT00530	L3DAE / L3D0	L3DA/L3D0	100%-1%	Hi-Lume™ 0.1% EcoSystem™ or 3-Wire LED Driver	120-277VAC to 24VDC, 96W, Class 2	1-15	1-10

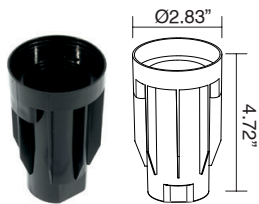
500mA - RGB

Part Number	Description	Input/Output	# of Fixtures 7W
PPLT00244-P	DMX / RDM (Must advise DMX addresses if not using RDM)	120-277VAC to 500mA, 50W, Class 2	1-7
PPLT00129-P	DMX / RDM (Field Addressable)	120-277VAC to 500mA, 100W, Class 2	1-12

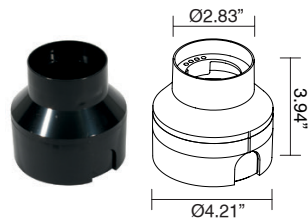
For other power supply options consult factory.

ACCESSORIES

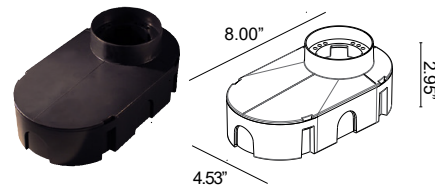
Installation



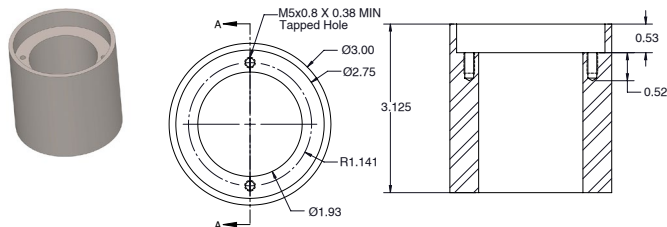
WC0100
Outer Casing
For in-grade use



WC0103
Outer Casing
For in-grade use



WC0150
Outer Casing
For in-grade use



PPMP03088
Core Drilled Application Sleeve



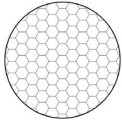
WG0100
Fixing Spring
For ceiling/wall use

Job Name/Date:

Fixture Type Designation:

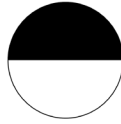
ACCESSORIES

Anti-glare



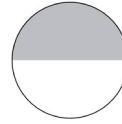
WH0201

Honeycomb Louvre
Not available for sharp, asymmetrical 8°, 8° and diffuse optics.



WE0400S

Anti-glare lens, half transparent and half serigraphed black
Not available for diffuse, asymmetrical 8° optics or RGB versions



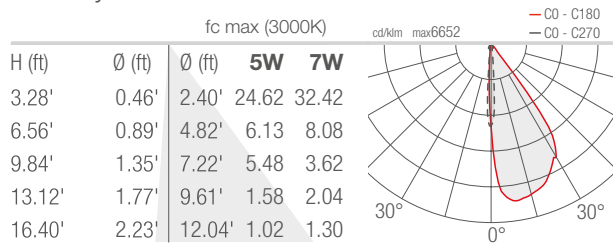
WE0400A

Semi-diffusing lens, half transparent and half frosted
Not available for diffuse, asymmetrical 8° optics or RGB versions

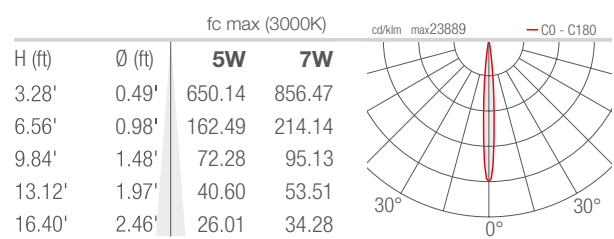
PHOTOMETRIC DATA

Note all Photometry is 3000K, CRI 80

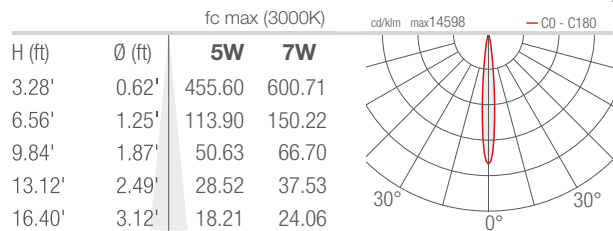
Z - Asymmetrical 8°



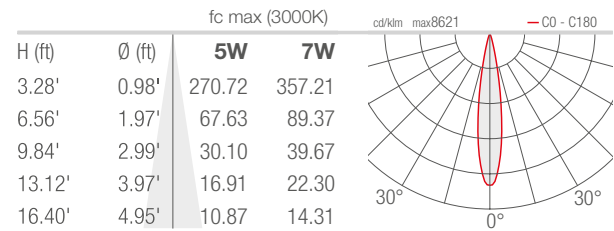
V - 8° CRI 80



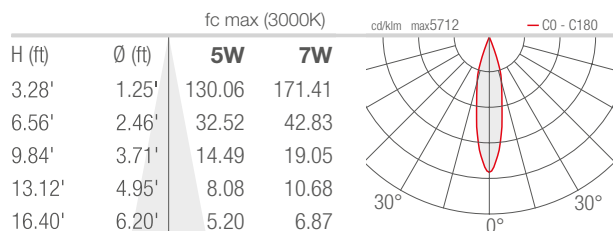
T - 11° CRI 80



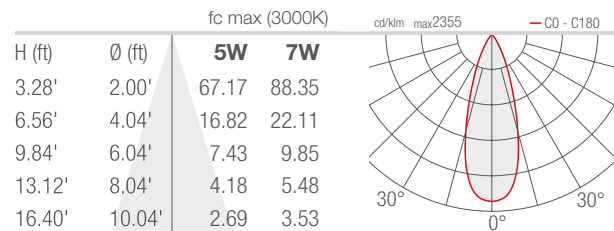
S - 17° CRI 80



P - 21° sharp CRI 80



M - 34° CRI 80



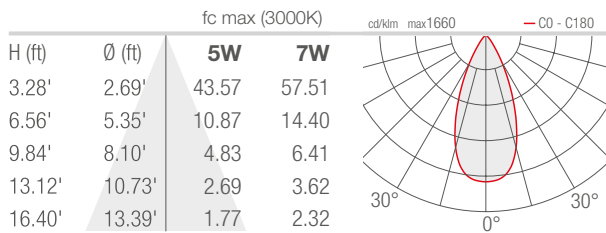
Job Name/Date:

Fixture Type Designation:

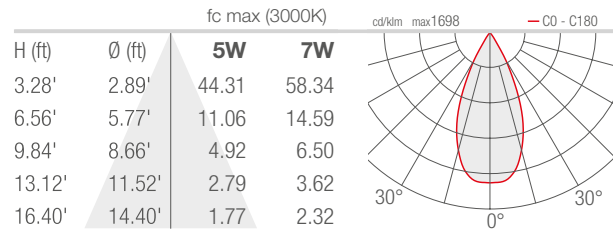
PHOTOMETRIC DATA

Note all Photometry is 3000K, CRI 80

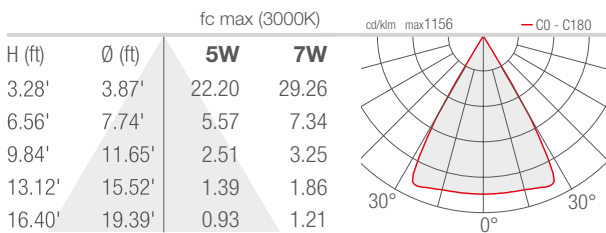
L - 45° CRI 80



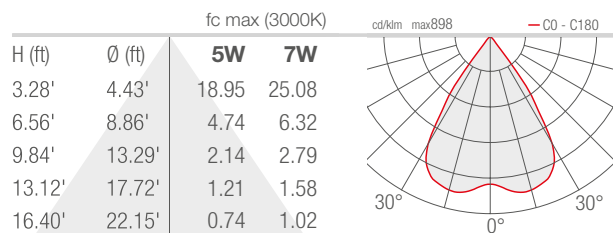
J - 47° CRI 80



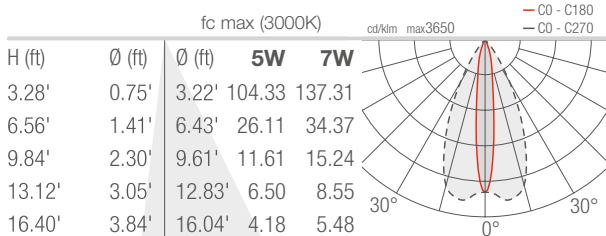
Q - 61° sharp CRI 80



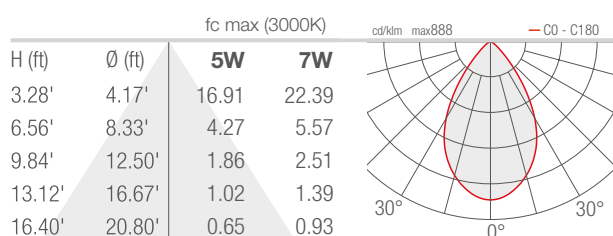
K - 68° CRI 80



W - 13°x52° CRI 80



D - Diffuse - sandblasted



Job Name/Date:

Fixture Type Designation: