

# BRIGHT 2.5

The Bright 2 series are small, powerful and versatile fixtures. Available in numerous optics, styles and anti-glare accessories, this fixture can be installed in-grade, wall mount or ceiling mount. Suitable for power washing. **The Bright 2, Smoothy 2 and Litus 2 series all use the same LED.**

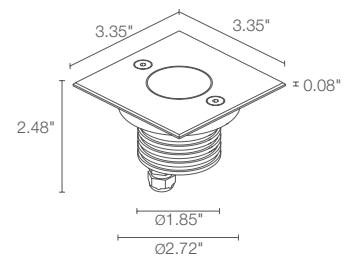
## TECHNICAL DATA

<b>Wattage / Input</b>	5W, 7W (24VDC), 5W (500mA, RGB)
<b>Power Supply</b>	Remote, not included. See page 2.
<b>Construction</b>	Body/Trim: Anodized Aluminum/Stainless Steel Lens: Tempered Extra-Clear Glass
<b>CCT</b>	2700K, 3000K, 4000K; RGB (3500K on request - not available on 8° or 21°x42° optics)
<b>CRI</b>	>80, >90
<b>BUG Rating</b>	B0-U2-G0 (3000K, 5W, 24VDC, Z) B0-U3-G0 (3000K, 5W, 24VDC, All optics except Z) B0-U3-G0 (3000K, 5W, 500mA, All optics) B0-U3-G0 (3000K, 7W, 24VDC, All optics)
<b>Delivered Lumens</b>	See Delivered Lumens Chart 191 lm: (R) 70 lm, (G) 90 lm, (B) 31 lm
<b>Efficacy</b>	57-70 lm/W (5W), 53-66 lm/W (7W), 38 lm/W (RGB)
<b>Optics</b>	12 Standard (White), 4 Standard (RGB)
<b>Finishes</b>	3 Standard (See below)
<b>Fixture Dimensions</b>	Ø3.39" x 2.48" h
<b>Cut-out Size</b>	Ø2.76" (for ceiling or wall installations)
<b>Fixture Weight</b>	0.97 lbs (Stainless Steel) 0.73 lbs (Aluminum)
<b>LED Source</b>	1 High-Intensity Power LED (White) 3 Power LEDs (RGB)
<b>Lumen Maintenance</b>	L90, B10 >50,000hrs (Ta 25°C)
<b>Color Consistency</b>	3-Step MacAdam (White)
<b>Operating Temp.</b>	-4°F to +113°F
<b>IP Rating</b>	IP68, IP69 (Tested to EN / IEC 60598-1)
<b>IK Rating</b>	IK10



Cutout Dimensions for ceiling/wall installations with fixing spring = Ø2.76"

Fixture Dimensions



<b>Delivered Lumens (3000K, 34°)</b>	5W	7W
<b>CRI 80</b>	352 lm	463 lm
<b>CRI 90</b>	284 lm	374 lm

## ORDERING INFORMATION

Example: CB25001FTAI or CB25001FTAI-1. Accessories / Power Supplies ordered separately.

Model No.	CRI	CCT	Optics	Finish (Body/Trim)	Cable Length
CB2500 - 5W	0 - 80 CRI	F - 2700K	Z - Asymmetrical 8°    M - 34°    W - 13°x52°	AI - Aluminum/SS	4.92' standard
CB2501 - 7W	1 - 90 CRI	5 - 3000K	V - 8°    L - 45°    D - Diffuse	II - SS / SS	1 - 16.40'
Static White Only		9 - 4000K	T - 11°    J - 47°	Note* SS: Stainless Steel	2 - 32.81'
			S - 17°    Q - 61° sharp		3 - 49.21'
			P - 21° sharp    K - 68°		4 - 65.62'
Model No.	CRI	CCT	Optics		
CB2532 - 5W		6 - RGB	S - 20°    L - 45°		
RGB Only			M - 34°    W - 21°x42°		

Job Name/Date:

Fixture Type Designation:

## SUGGESTED POWER SUPPLIES 24VDC

Part Number	Description	Input/Output	# of Fixtures 5W / 7W	
<a href="#">PPLT00632</a>	0-10V Dimming (Dim to Off)	120-277VAC to 24VDC, 12W, Class 2	1-1	1-1
<a href="#">PPLT00056</a>	Non-Dim	120-277VAC to 24VDC, 26W, Class 2, IP66	1-4	1-2
<a href="#">PPLT00586</a>	Non-Dim	120-277VAC to 24VDC, 40W, Class 2	1-6	1-4
<a href="#">PPLT00709</a>	ELV / TRIAC & 0-10V Dimming	120-277VAC to 24VDC, 96W, Class 2, DAMP	1-15	1-10
<a href="#">PPLT00543</a>	0-10V Dimming to 15% (-40°C / -40°F cold weather start)	120-277VAC to 24VDC, 100W, Class 2	2-16	2-11

## Suggested Lutron Compatible

Part Number	Option	Lutron SKU	Dim Range	Description	Input/Output	# of Fixtures 5W 7W	
<a href="#">PPLT00273</a>	L3DAE / L3DA3W	L3DA	100%-1%	Hi-Lume™ 1% EcoSystem™ or 1% 3-Wire LED Driver	120-277VAC to 24VDC, 40W, Class 2	1-6	1-4
<a href="#">PPLT00530</a>	L3DAE / L3D0	L3DA/L3D0	100%-1%	Hi-Lume™ 0.1% EcoSystem™ or 3-Wire LED Driver	120-277VAC to 24VDC, 96W, Class 2	1-15	1-10

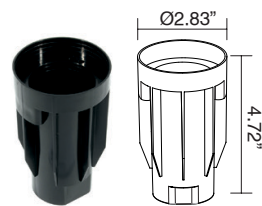
## 500mA - RGB

Part Number	Description	Input/Output	# of Fixtures 7W
<a href="#">PPLT00244-P</a>	DMX / RDM (Must advise DMX addresses if not using RDM)	120-277VAC to 500mA, 50W, Class 2	1-7
<a href="#">PPLT00129-P</a>	DMX / RDM (Field Addressable)	120-277VAC to 500mA, 100W, Class 2	1-12

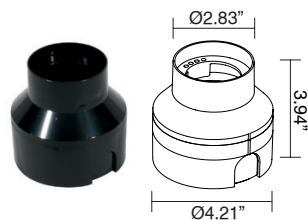
For other power supply options consult factory.

## ACCESSORIES

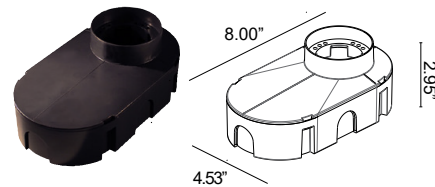
### Installation



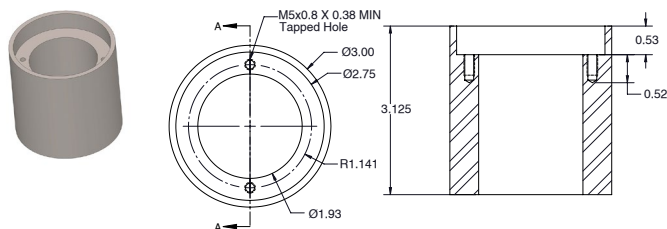
**WC0100**  
Outer Casing  
For in-grade use



**WC0103**  
Outer Casing  
For in-grade use



**WC0150**  
Outer Casing  
For in-grade use



**PPMP03088**  
Core Drilled Application Sleeve



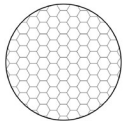
**WG0100**  
Fixing Spring  
For ceiling/wall use

Job Name/Date:

Fixture Type Designation:

## ACCESSORIES

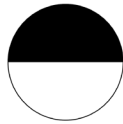
### Anti-glare



#### WH0201

Honeycomb Louvre

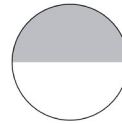
Not available for sharp, asymmetrical 8°, 8° and diffuse optics.



#### WE0400S

Anti-glare lens, half transparent and half serigraphed black

Not available for diffuse, asymmetrical 8° optics or RGB versions



#### WE0400A

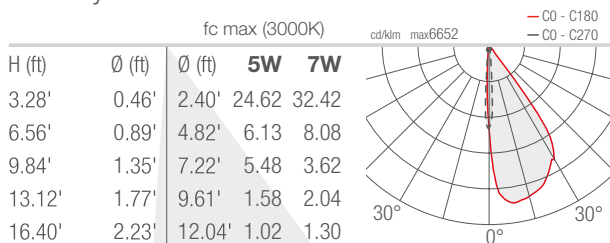
Semi-diffusing lens, half transparent and half frosted

Not available for diffuse, asymmetrical 8° optics or RGB versions

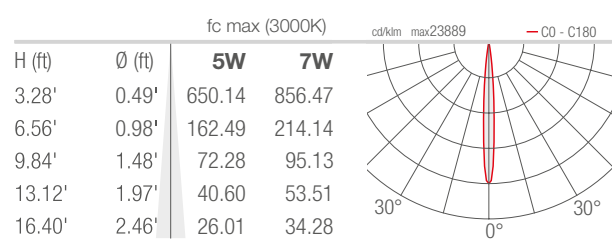
## PHOTOMETRIC DATA

Note all Photometry is 3000K, CRI 80

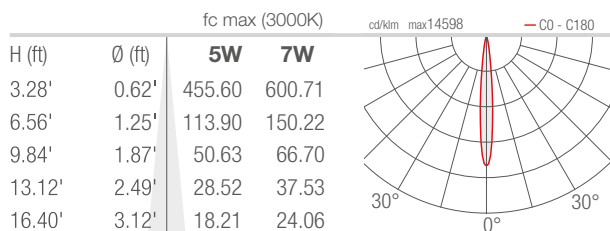
### Z - Asymmetrical 8°



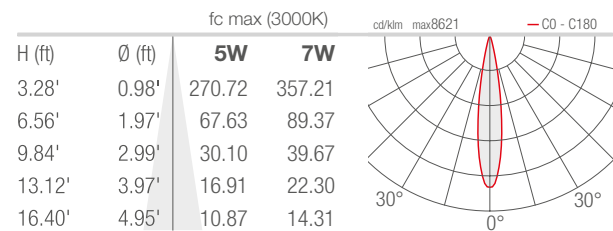
### V - 8° CRI 80



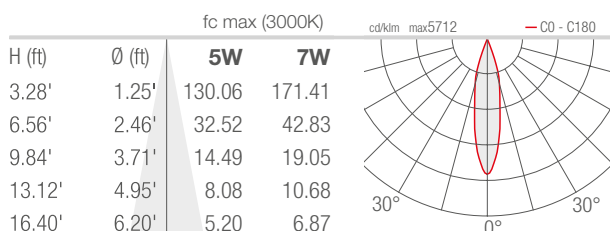
### T - 11° CRI 80



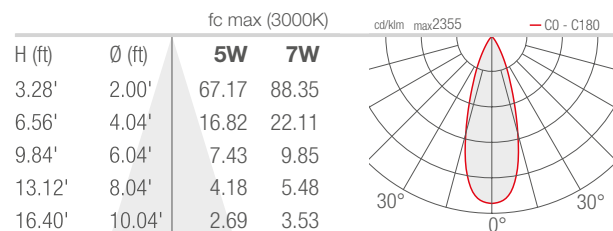
### S - 17° CRI 80



### P - 21° sharp CRI 80



### M - 34° CRI 80



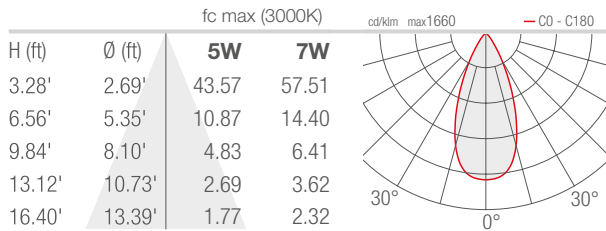
Job Name/Date:

Fixture Type Designation:

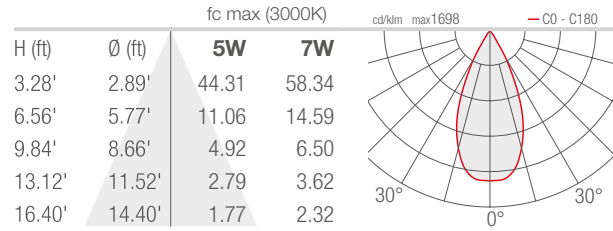
## PHOTOMETRIC DATA

Note all Photometry is 3000K, CRI 80

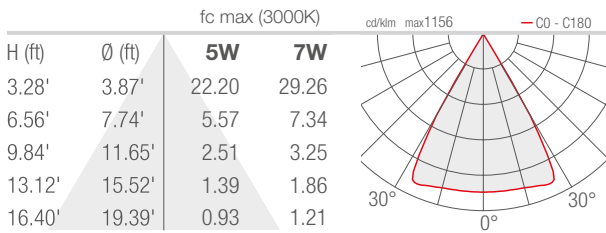
### L - 45° CRI 80



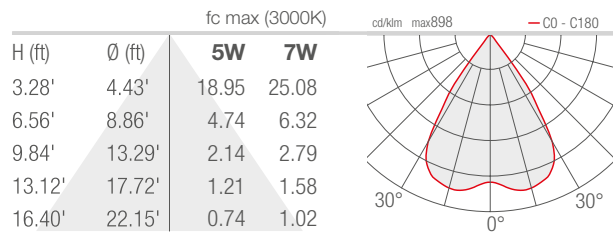
### J - 47° CRI 80



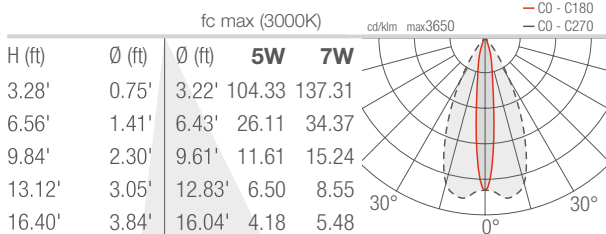
### Q - 61° sharp CRI 80



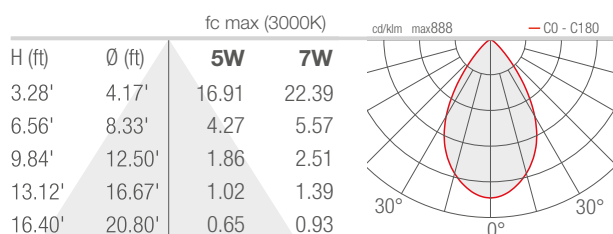
### K - 68° CRI 80



### W - 13°x52° CRI 80



### D - Diffuse - sandblasted



Job Name/Date:

Fixture Type Designation: