

BRIGHT 2.9

The Bright 2 series are small, powerful and versatile fixtures. Available in numerous optics, styles and anti-glare accessories, this fixture can be installed in-grade, wall mount or ceiling mount. Suitable for power washing. **The Bright 2, Smoothy 2 and Litus 2 series all use the same LED.**

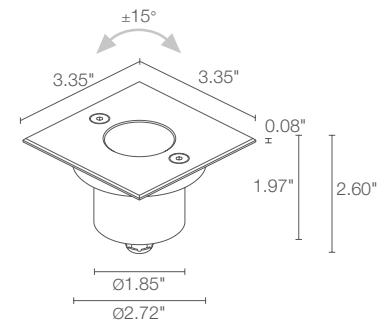
TECHNICAL DATA

Wattage / Input	2.5W, 3.5W (24VDC)
Power Supply	Remote, not included. See page 2.
Construction	Body: Anodized Aluminum EN AW 6082 Lens: Tempered Transparent Glass Cable Length: 4.92' standard
CCT	2700K, 3000K, 4000K, Blue (3500K on request)
CRI	>80
BUG Rating	B0-U2-G0 (3000K, 2.5W, P) B0-U3-G0 (3000K, 2.5W, S, M, L, Q, W) B0-U3-G0 (3000K, 3.5W, All optics)
Delivered Lumens	112 lm (3000K, 20°, 2.5W) 143 lm (3000K, 20°, 3.5W)
Efficacy	44.8 lm/W (3000K, 20°, 2.5W) 40.9 lm/W (3000K, 20°, 3.5W)
Optics	6 Standard (see below)
Finishes	Micro-blasted Stainless Steel
Fixture Dimensions	3.35" l x 3.35" w x 2.36" h
Cut-out Size	Ø2.76" (for ceiling or wall installations)
Fixture Weight	1.10 lbs SS, 0.88 lbs Aluminum
LED Source	1 Power LED
Lumen Maintenance	L90, B10 >50,000hrs (Ta 25°C)
Color Consistency	1/4 ANSI BIN
Operating Temp.	-4°F to +113°F
IP Rating	IP68, IP69 (Tested to EN / IEC 60598-1)
IK Rating	IK10



Cutout Dimensions for ceiling/wall installations with fixing spring = Ø2.76"

Fixture Dimensions



ORDERING INFORMATION

Example: CB29000FMI or CB29000FMI-3. Accessories / Power Supplies ordered separately.

CB290				I	
Model No.	Wattage	CCT	Optics	Finish	Cable Length
CB290	00 - 2.5W 10 - 3.5W	F - 2700K 5 - 3000K 9 - 4000K 1 - Blue	S - 8° tiltable ±15° M - 20° tiltable ±15° P - 36° sharp tiltable ±15° L - 41° tiltable ±15° Q - 68° sharp tiltable ±15° W - 10° x 44° tiltable ±15°	I - Stainless Steel	4.92' standard 1 - 16.40' 2 - 32.81' 3 - 49.21' 4 - 65.62'

Job Name/Date:

Fixture Type Designation:

SUGGESTED POWER SUPPLIES

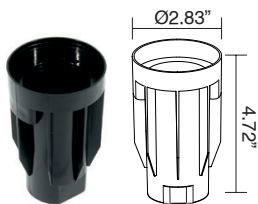
24VDC

Part Number	Description	Input/Output	# of Fixtures 2.5W / 3.5W	
PPLT00632	0-10V Dimming (Dim to Off)	120-277VAC to 24VDC, 12W, Class 2	1-3	1-2
PPLT00056	Non-Dim	120-277VAC to 24VDC, 26W, Class 2, IP66	1-8	1-5
PPLT00157	Non-Dim	120VAC to 24VDC, 60W, Class 2	1-19	1-13
PPLT00627	ELV / TRIAC & 0-10V Dimming (100 to 0%), IP67	120-277VAC to 24VDC, 96W, Class 2	1-30	1-21
PPLT00158	Non-Dim	120VAC to 24VDC, 100W, Class 2	1-32	1-22
PPLT00543	0-10V Dimming to 15% (-40°C / -40°F cold weather start)	120-277VAC to 24VDC, 100W, Class 2	4-32	3-22

For other power supply options consult factory.

ACCESSORIES

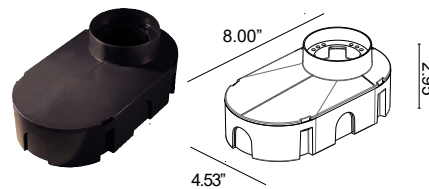
Installation



WC0100
Outer Casing
For in-grade use



WC0103
Outer Casing
For in-grade use

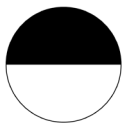


WC0150
Outer Casing
For in-grade use



WG0100
Fixing Spring
For ceiling/wall use

Anti-glare



WE0400S
Anti-glare lens, half
transparent and half
serigraphed black

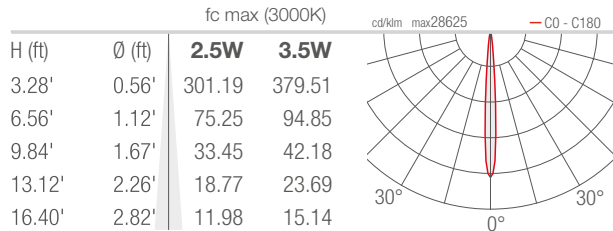
Job Name/Date:

Fixture Type Designation:

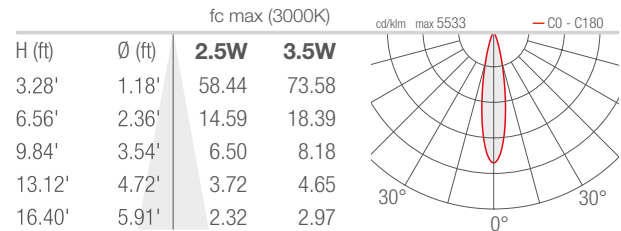
PHOTOMETRIC DATA

Note all Photometry is 3000K

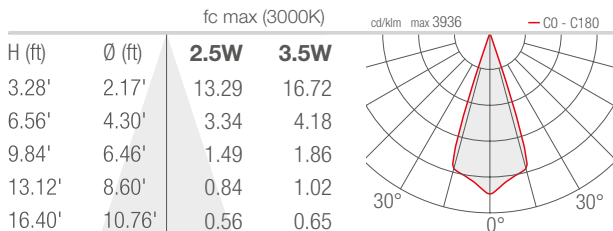
S - 8°



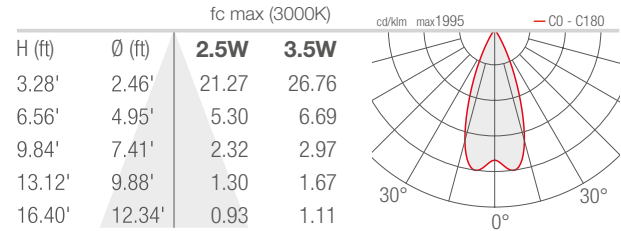
M - 20°



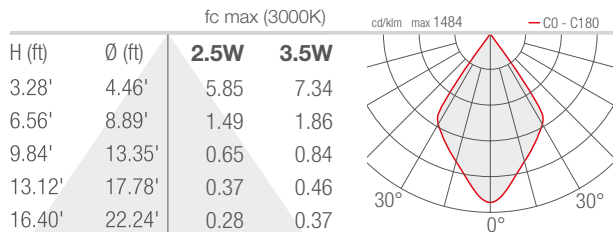
P - 36° sharp



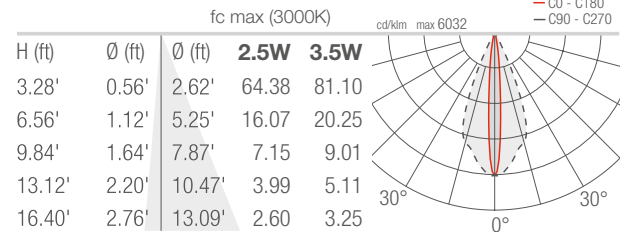
L - 41°



Q - 68° sharp



W - 10°x44°



Job Name/Date:

Fixture Type Designation: