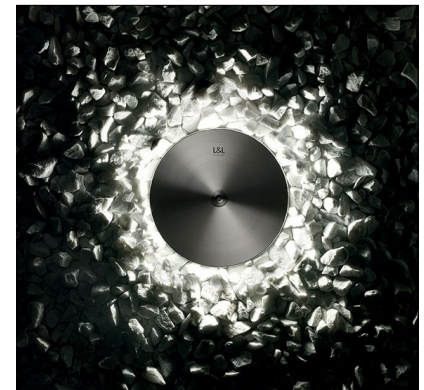


# BRIGHT 4.7

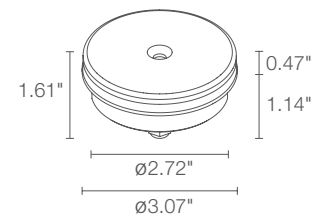
The Bright 4.7 is an outdoor rated, driveover luminaire with a 360 degree radial optic. While the standard installation is ingrade the fixture can be mounted on walls or ceilings to create a dynamic lighting effect.



## TECHNICAL DATA

<b>Wattage / Input</b>	2W (24VDC)
<b>Power Supply</b>	Remote, not included. See page 2.
<b>Construction</b>	Body: Anodized Aluminum EN AW 6082 Trim: AISI 316L Stainless Steel Lens: PMMA
<b>CCT</b>	2700K, 3000K, 4000K
<b>CRI</b>	>80
<b>BUG Rating</b>	B0-U2-G0 (3000K)
<b>Delivered Lumens</b>	70 lm (3000K)
<b>Efficacy</b>	35 lm/W (3000K)
<b>Optics</b>	Radial
<b>Finishes</b>	Stainless Steel
<b>Fixture Dimensions</b>	Ø 3.07" x 1.61" h
<b>Fixture Weight</b>	0.88 lbs
<b>LED Source</b>	24 Side-Emitting LEDs
<b>Lumen Maintenance</b>	L90, B10 >50,000hrs (Ta 25°C)
<b>Color Consistency</b>	1/4 ANSI BIN
<b>Operating Temp.</b>	-4°F to +113°F
<b>IP Rating</b>	IP68
<b>IK Rating</b>	IK09
<b>Driveover</b>	4400 lbs

Fixture Dimensions



## ORDERING INFORMATION

Example: CB47000FRI or CB47000FRI-2. Accessories / Power Supplies ordered separately.

CB47000		R	I	
Model No.	CCT	Optics	Finish	Cable Length
CB47000	F - 2700K 5 - 3000K 9 - 4000K	R - Radial	I - Stainless Steel	4.92' standard 1 - 16.40' 2 - 32.81' 3 - 49.21' 4 - 65.62'

Job Name/Date:

Fixture Type Designation:

## SUGGESTED POWER SUPPLIES

24VDC

Part Number	Description	Input/Output	# of Fixtures
<a href="#">PPLT00632</a>	0-10V Dimming (Dim to Off)	120-277VAC to 24VDC, 12W, Class 2	1-4
<a href="#">PPLT00056</a>	Non-Dim	120-277VAC to 24VDC, 26W, Class 2, IP66	1-10
<a href="#">PPLT00586</a>	Non-Dim	120-277VAC to 24VDC, 40W, Class 2	1-16
<a href="#">PPLT00158</a>	Non-Dim	120VAC to 24VDC, 100W, Class 2	1-40
<a href="#">PPLT00543</a>	0-10V Dimming to 15% (-40°C / -40°F cold weather start)	120-277VAC to 24VDC, 100W, Class 2	5-40

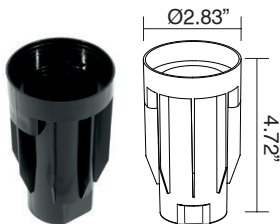
## Suggested Lutron Compatible

Part Number	Option	Lutron SKU	Dim Range	Description	Input/Output	# of Fixtures
<a href="#">PPLT00273</a>	L3DAE / L3DA3W	L3DA	100%-1%	Hi-Lume™ 1% EcoSystem™ or 1% 3-Wire LED Driver	120-277VAC to 24VDC, 40W, Class 2	1-16
<a href="#">PPLT00530</a>	L3DAE / L3D0	L3DA/L3D0	100%-1%	Hi-Lume™ 0.1% EcoSystem™ or 3-Wire LED Driver	120-277VAC to 24VDC, 96W, Class 2	1-38

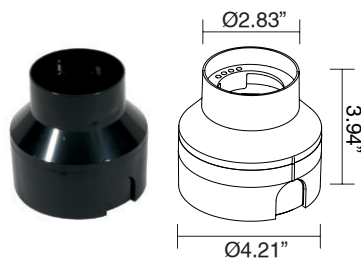
For other power supply options consult factory.

## ACCESSORIES

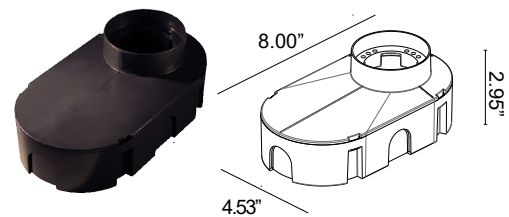
### Installation



**WC0100**  
Outer Casing  
For in-grade use



**WC0103**  
Outer Casing  
For in-grade use



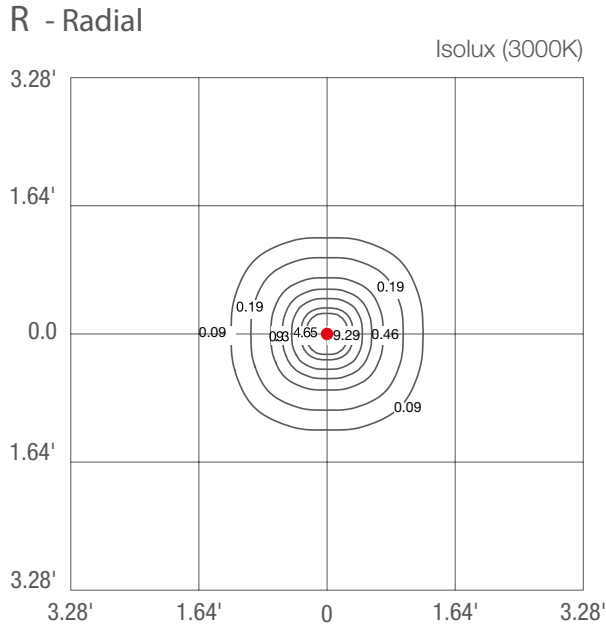
**WC0150**  
Outer Casing  
For in-grade use

Job Name/Date:

Fixture Type Designation:

## PHOTOMETRIC DATA

Note all Photometry is 3000K



Job Name/Date:

Fixture Type Designation: