

BRIGHT 3.0 316L

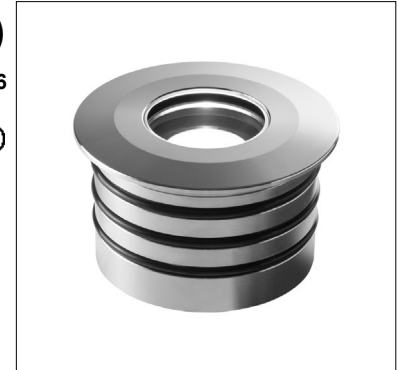
The Bright 3.0 316L recessed uplight is ideal for underwater use including salt water. The 7W static white and RGB versions **are for use both above and below water**. The 9W static white version is **for use underwater ONLY**. Available in Static White (7W, 9W) or RGB (5W only).

TECHNICAL DATA

Wattage / Input	7W, 9W (24VDC); 5W RGB (500mA)
Power Supply	Remote, not included. See page 2.
Construction	Body and Trim: AISI 316L Stainless Steel Lens: 0.39" Tempered, Transparent Extra-Clear Glass Cable Length: 16.4'
CCT	White: 2700K, 3000K, 4000K; RGB
CRI	CRI>80
Delivered Lumens	463 lm (3000K, 34°, 7W), 602 lm (3000K, 34°, 9W) RGB: 191 lm: (R) 70 lm (G) 90 lm (B) 31 lm (500mA, 34°)
Efficacy	66.1 lm/W (3000K, 34°, 7W) 66.9 lm/W (3000K, 34°, 9W) 38.2 lm/W (RGB)
Optics	White: 11°, 34°, 45°, 68°, 13°x52° RGB: 20°, 34°, 45°, 21°x42°
Fixture Dimensions	Ø3.15" x 2.72" h
Fixture Weight	2.54 lbs
LED Source	White: 1 High Intensity Power LED RGB: 3 Power LEDs
Lumen Maintenance	L90, B10 >50,000hrs (Ta 25°C)
Color Consistency	3-Step MacAdam
Operating Temp.	-4°F to +113°F (Outdoor) +32°F to +113°F (Underwater)
IP Rating	IP68
Impact Rating	IK10

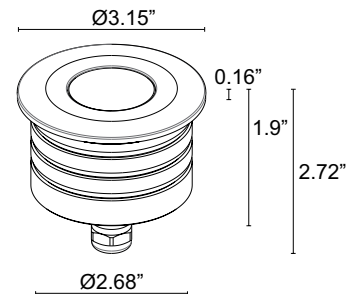


UL 676



Fixture Dimensions

Ø3.15" x 2.72" h



OUTER CASING REQUIRED

ORDERING INFORMATION

Example: CW300005LI. Accessories / Power Supplies ordered separately.

			I
Model No.	CCT	Optics (White)	Trim
CW30000 - 7W	F - 2700K	S - 11° K - 68°	I - Stainless Steel
CW30010 - 9W	5 - 3000K	M - 34° W - 13°x52°	
	9 - 4000K	L - 45°	
Model No.	CCT	Optics (RGB)	
CW3032 - 5W	6 - RGB	S - 20° L - 45°	
		M - 34° W - 21°x42°	

Job Name/Date:

Fixture Type Designation:

SUGGESTED POWER SUPPLIES

24VDC - FOR USE WITH FOUNTAIN / WATER FEATURES

Part Number	Description	Input/Output	# of Fixtures	
			7W	9W
FPV-100000024	Non-Dim	120-277VAC to 24VDC, 100W, Class 2	1-11	1-8
FPV-100100024	0-10V Dimming to 1.0%	120-277VAC to 24VDC, 100W, Class 2	1-11	1-8
FPV-100EL0024	DMX / RDM (Field Addressable) / DALI	120-277VAC to 24VDC, 100W, Class 2	1-11	1-8

500mA RGB - FOR USE WITH FOUNTAIN / WATER FEATURES

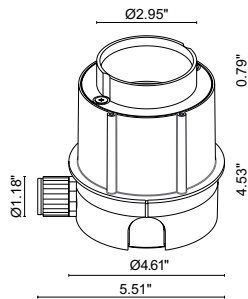
Part Number	Description	Input/Output	# of Fixtures
			5W
FPC-100EL0500	DMX / RDM (Field Addressable) / DALI	120-277VAC to 500mA, 100W, Class 2	1-6

For other power supply options consult factory.

ACCESSORIES - Installation



WC5004
Outer Casing
REQUIRED



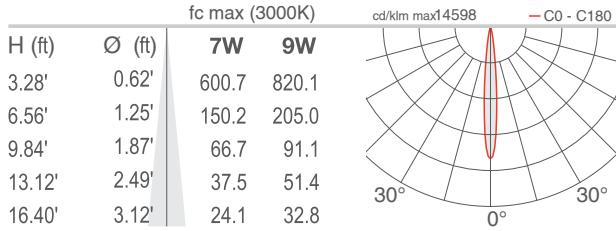
Job Name/Date:

Fixture Type Designation:

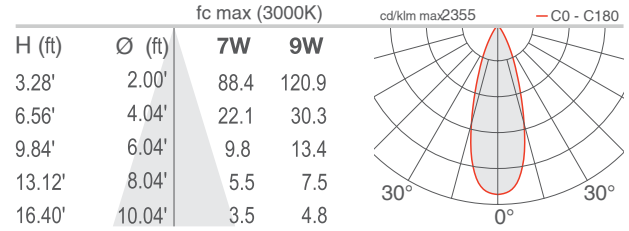
PHOTOMETRIC DATA

Note all Photometry is 3000K

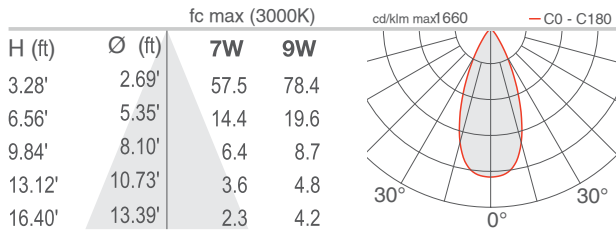
S - 11°



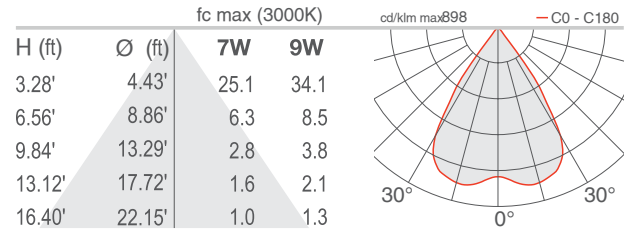
M - 34°



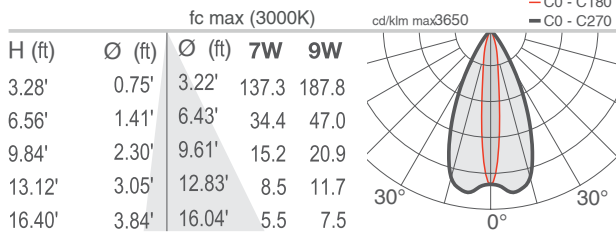
L - 45°



K - 68°



W - 13°x52°



Job Name/Date:

Fixture Type Designation: