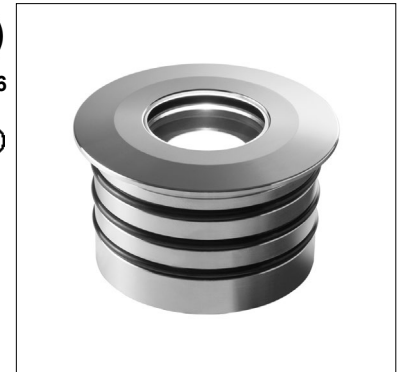


BRIGHT 3.0 316L

The Bright 3.0 316L recessed uplight is ideal for underwater use including salt water. The 7W static white and RGB versions **are for use both above and below water**. The 9W static white version is **for use underwater ONLY**. Available in Static White (7W, 9W) or RGB (5W only).

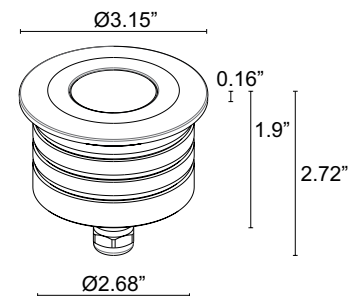
TECHNICAL DATA

| | |
|---------------------------|--|
| Wattage / Input | 7W, 9W (24VDC); 5W RGB (500mA) |
| Power Supply | Remote, not included. See page 2. |
| Construction | Body and Trim: AISI 316L Stainless Steel Lens: 0.39" Tempered, Transparent Extra-Clear Glass Cable Length: 16.4' |
| CCT | White: 2700K, 3000K, 4000K; RGB |
| CRI | CRI>80 |
| BUG Rating | B0-U0-G0 (RGB) B1-U1-G0 (3000K) |
| Delivered Lumens | 463 lm (3000K, 34°, 7W), 602 lm (3000K, 34°, 9W) RGB: 191 lm: (R) 70 lm (G) 90 lm (B) 31 lm (500mA, 34°) |
| Efficacy | 66.1 lm/W (3000K, 34°, 7W) 66.9 lm/W (3000K, 34°, 9W) 38.2 lm/W (RGB) |
| Optics | White: 11°, 34°, 45°, 68°, 13°x52° RGB: 20°, 34°, 45°, 21°x42° |
| Fixture Dimensions | Ø3.15" x 2.72" h |
| Fixture Weight | 2.54 lbs |
| LED Source | White: 1 High Intensity Power LED RGB: 3 Power LEDs |
| Lumen Maintenance | L90, B10 >50,000hrs (Ta 25°C) |
| Color Consistency | 3-Step MacAdam |
| Operating Temp. | -4°F to +113°F (Outdoor) +32°F to +113°F (Underwater) |
| IP Rating | IP68 |
| Impact Rating | IK10 |



Fixture Dimensions

Ø3.15" x 2.72" h



OUTER CASING REQUIRED

ORDERING INFORMATION

Example: CW300005LI. Accessories / Power Supplies ordered separately.

| | | | |
|------------------|------------|--------------------------|---------------------|
| | | | I |
| Model No. | CCT | Optics (White) | Trim |
| CW30000 - 7W | F - 2700K | S - 11° K - 68° | I - Stainless Steel |
| CW30010 - 9W | 5 - 3000K | M - 34° W - 13°x52° | |
| | 9 - 4000K | L - 45° | |
| Model No. | CCT | Optics (RGB) | |
| CW3032 - 5W | 6 - RGB | S - 20° L - 45° | |
| | | M - 34° W - 21°x42° | |

Job Name/Date:

Fixture Type Designation:

SUGGESTED POWER SUPPLIES

24VDC - FOR USE WITH FOUNTAIN / WATER FEATURES

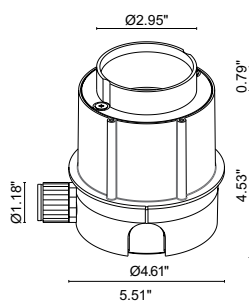
| Part Number | Description | Input/Output | # of Fixtures | |
|-------------------------------|--------------------------------------|------------------------------------|---------------|-----|
| | | | 7W | 9W |
| FPV-100000024 | Non-Dim | 120-277VAC to 24VDC, 100W, Class 2 | 1-11 | 1-8 |
| FPV-100100024 | 0-10V Dimming to 1.0% | 120-277VAC to 24VDC, 100W, Class 2 | 1-11 | 1-8 |
| FPV-100EL0024 | DMX / RDM (Field Addressable) / DALI | 120-277VAC to 24VDC, 100W, Class 2 | 1-11 | 1-8 |

500mA RGB - FOR USE WITH FOUNTAIN / WATER FEATURES

| Part Number | Description | Input/Output | # of Fixtures |
|-------------------------------|--------------------------------------|------------------------------------|---------------|
| | | | 5W |
| FPC-100EL0500 | DMX / RDM (Field Addressable) / DALI | 120-277VAC to 500mA, 100W, Class 2 | 1-6 |

For other power supply options consult factory.

ACCESSORIES - Installation



WC5004
Outer Casing
REQUIRED

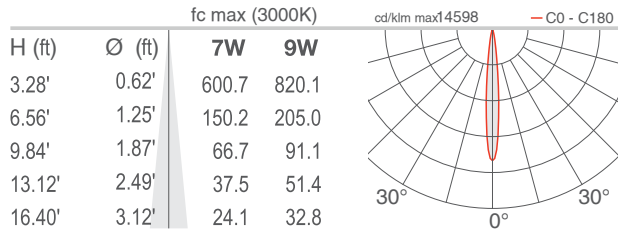
Job Name/Date:

Fixture Type Designation:

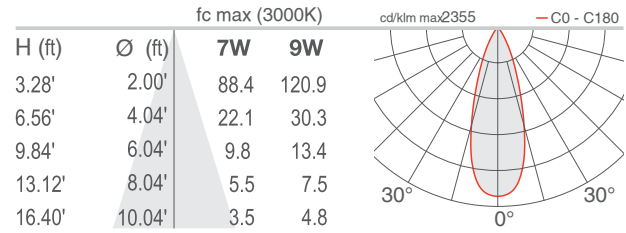
PHOTOMETRIC DATA

Note all Photometry is 3000K

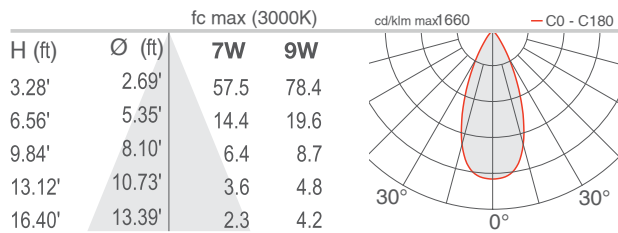
S - 11°



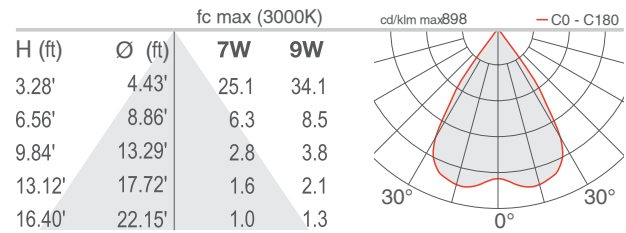
M - 34°



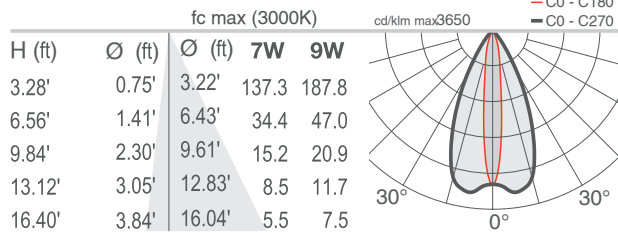
L - 45°



K - 68°



W - 13°x52°



Job Name/Date:

Fixture Type Designation: