

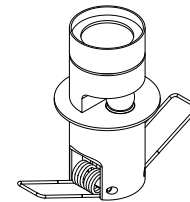
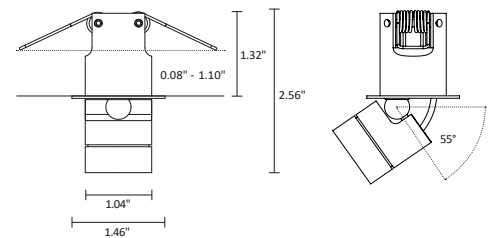
C1-DL is an LED downlight for installation in display case ceilings, suitable for showcase lighting in museum and retail settings. It is 360° rotatable, 55° swiveling, and is available with a variety of optics, 5 color temperatures and 3 standard finishes.



TECHNICAL DATA

Wattage / Input	2.9W (700mA)
Power Supply	Remote, not included - See page 3
Dimming	Dimming by Remote Driver - See page 3 <i>(Not Suitable for Dimming Pen)</i>
Construction	Body: Anodized Aluminum
CCT	2700K, 3000K, 3500K, 4000K, 5700K
CRI	>97
Delivered Lumens	180 lm (3000K, 20°)
Efficacy	62 lm/W (3000K, 20°)
Optics	6 Standard, See Below
Finishes	3 Standard, See Below
Fixture Dimensions	Ø1.04" x 2.56"
Lumen Maintenance	L80, B10 >50,000hrs
IP Rating	IP20

Fixture Dimensions



ORDERING INFORMATION

Example: C1-DL-29-40-35-G. Accessories / Power Supplies ordered separately.

C1-DL	-	29	-		-		-	
Model No.	Wattage	CCT	Optics	Finish				
C1-DL	29 - 2.9W	27 - 2700K 30 - 3000K 35 - 3500K 40 - 4000K 57 - 5700K	10 - 10° 15 - 15° 20 - 20° 35 - 35° 45 - 45° 46 - 46°+10°	B - Anodized Black S - Silver G - Gold C - Custom RAL <i>(consult factory for "C")</i>				

Job Name/Date:

Fixture Type Designation:

ACCESSORIES



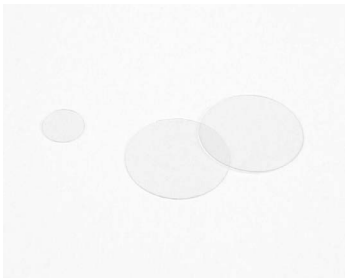
Honeycomb Grid



Anti-Glare Tube



Inclined Tube



Light Diffusion Foil



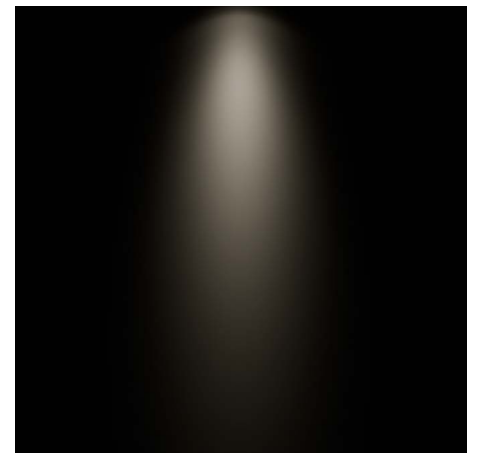
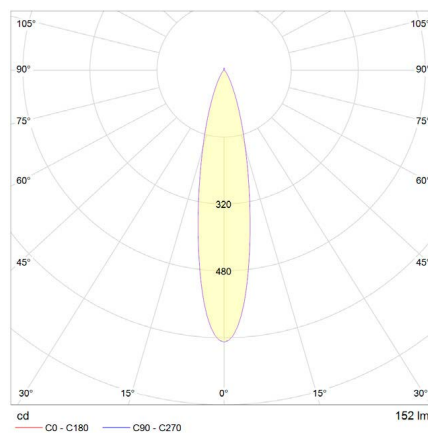
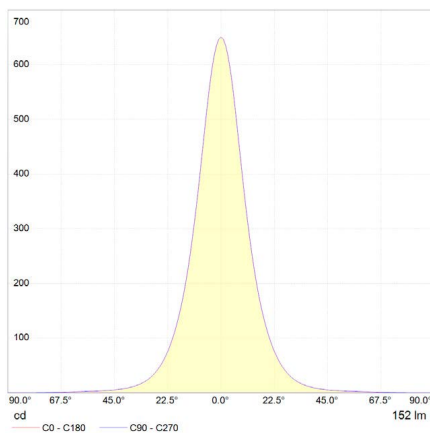
Barn Door



Zoom Optic (2° - 25°, 6° - 36°)

PHOTOMETRIC DATA

for light color ~3,000 K | standard lens 20° | color rendering index typ. 97, R9 > 90, R12 > 90 | color variation ≤ 3 SDCM



Job Name/Date:

Fixture Type Designation:

SUGGESTED POWER SUPPLIES

700mA

Part Number	Description	Input/Output	# of Fixtures
PPLT00498	Phase Dim (120V only)	120VAC to 700mA, 12W, Class 2, DAMP	2-3
PPLT00309-P	0-10V Dimming to 0.1%	120-277VAC to 700mA, 50W, Class 2, DAMP	1-14

Suggested Lutron Compatible

Part Number	Option	Lutron SKU	Dim Range	Description	Input/Output	# of Fixtures
PPLT00515	L3DAE / L3DA3W	L3DA	100%-1%	Hi-Lume™ 1% EcoSystem™ or 1% 3-Wire LED Driver	120-277VAC to 700mA, 14W, Class 2	4-4

For other power supply options consult factory.

Job Name/Date:

Fixture Type Designation: