

The Centaur C1X is a 1" diameter ingrade uplight made of stainless steel that is suitable for power washing and is driveover rated up to 11,000 lbs.

## TECHNICAL DATA

<b>Wattage / Input</b>	1W (24VDC)
<b>Power Supply</b>	Remote, not included. See page 2.
<b>Construction</b>	Body and Trim: Stainless Steel 304 Alloy Jbox: Cast Stainless Steel Lens: 0.4" Clear, Frosted or Internally Ceramic Coated Tempered Glass Lens Frame: Threaded Bottlecap
<b>CCT</b>	3000K, 5000K
<b>CRI</b>	CRI>80
<b>Delivered Lumens</b>	44 lm (3000K, 24VDC)
<b>Efficacy</b>	44 lm/W
<b>Optics</b>	0°, 6°, 25°
<b>Finishes</b>	Stainless Steel 304 Alloy
<b>Fixture Dimensions</b>	Ø1.0" x 4.0" h
<b>LED Source</b>	1 Cree XPE LED
<b>IP Rating</b>	IP68, IP69K
<b>Driveover Rated</b>	11,000 lbs



**MADE IN THE U.S.A.**

Fixture Dimensions  
Ø1.0" x 4.0" h  
See Full Drawing on page 2

## ORDERING INFORMATION

Example: C1X-L-150-4-SS-1-X-T-00.

C1X-L	-		-	4	-	SS	-		-	X	-		-	00
-------	---	--	---	---	---	----	---	--	---	---	---	--	---	----

Model #	Wattage/CCT	Body	Finish	Optics	Driver	Lens	Options
C1X-L	130 -1W, 3000K 150 -1W, 5000K	4 - Recessed box with conduit entries	SS - Stainless Steel	0 - None 1 - 6° 2 - 25°	X - Remote  See p.2 to specify  Note: 0-10V on board dimming included	T - Clear Tempered K - Internally Ceramic Coated G - Frosted Tempered Glass  Note: Optic options 1 and 2 can only be used with "T" Lens.	00 - None

Job Name/Date:

Fixture Type Designation:

## SUGGESTED POWER SUPPLIES

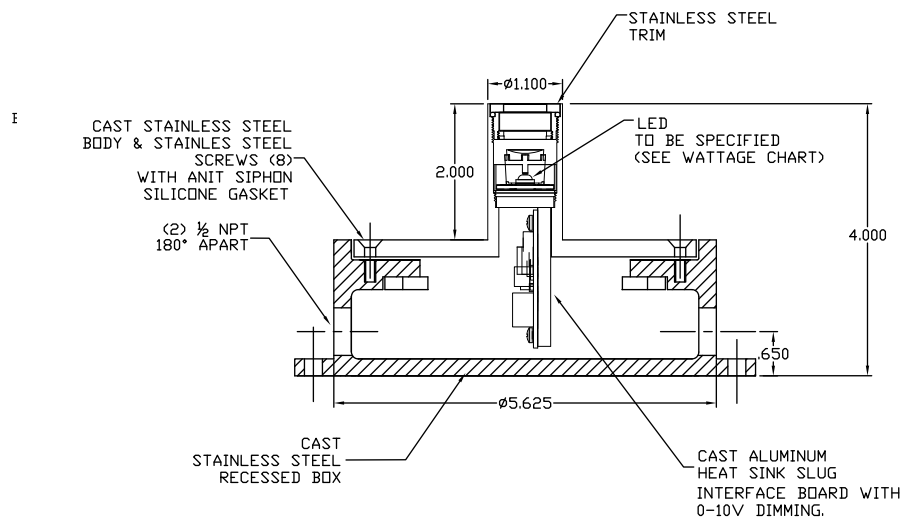
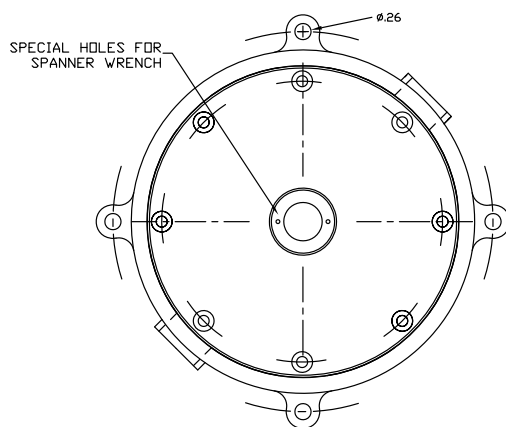
24VDC

Part Number	Description	Input/Output	# of Fixtures
<a href="#">PPLT00128</a>	Non-Dim	120VAC to 24VDC, 6W, Class 2, IP65	1-4
<a href="#">PPLT00056</a>	Non-Dim	120-277VAC to 24VDC, 26W, Class 2, IP66	1-20
<a href="#">PPLT00155</a>	Non-Dim	120VAC to 24VDC, 30W, Class 2	1-24
<a href="#">PPLT00157</a>	Non-Dim	120VAC to 24VDC, 60W, Class 2	1-48
<a href="#">PPLT00158</a>	Non-Dim	120VAC to 24VDC, 100W, Class 2	1-80

For other power supply options consult factory.

**NOTE: 0-10V DIMMING INTERFACE INCLUDED - to be wired separately**

## FIXTURE DIMENSIONS



Job Name/Date:

Fixture Type Designation: