

The Centaur C2X is a 2.5" diameter ingrade uplight made of stainless steel that is suitable for power washing and is driveover rated up to 11,000 lbs.

## TECHNICAL DATA

<b>Wattage / Input</b>	1W, 3W (24VDC)
<b>Power Supply</b>	Remote, not included. See page 2.
<b>Construction</b>	Body and Trim: Stainless Steel 304 Alloy Jbox: Cast Stainless Steel Lens: 0.4" Clear, Frosted or Internally Ceramic Coated Tempered Glass Lens Frame: Threaded Bottlecap
<b>CCT</b>	3000K, 4000K, 5000K
<b>CRI</b>	CRI>80
<b>Delivered Lumens</b>	260 lm (3000K, 24VDC)
<b>Efficacy</b>	260 lm/W, 86.7 lm/W
<b>Optics</b>	0°, 10°, 21°, 39°, 10°x44°
<b>Finishes</b>	Stainless Steel 304 Alloy
<b>Fixture Dimensions</b>	Ø2.5" x 4.0" h
<b>LED Source</b>	1 Cree XPE LED
<b>IP Rating</b>	IP68, IP69
<b>Driveover Rated</b>	11,000 lbs



Fixture Dimensions  
Ø2.5" x 4.0" h  
See Full Drawing on page 2

## ORDERING INFORMATION

**Example: C2X-L-330-4-SS-1-X-G-00. Power Supplies ordered separately.**

C2X-L	-		-	4	-	SS	-		-	X	-		-	00
Model No.	Wattage/CCT	Body	Finish	Optics	Driver	Lens	Options							
C2X-L	130 - 1W, 3000K 140 - 1W, 4000K 150 - 1W, 5000K 330 - 3W, 3000K 340 - 3W, 4000K 350 - 3W, 5000K	4 - Recessed box with conduit entries	SS - Stainless Steel	1 - 10° 2 - 21° 3 - 39° 4 - 10°x44° Elliptical 0 - None  <b>Note:</b> Optics for use with 'T' clear glass lens. They are not intended for 'K' or 'G' lens - use 0 - None	X - Remote  See p.2 to specify      <b>Note:</b> 0-10V on board dimming included	T - Clear Tempered Glass  K - Internally Ceramic Coated  G - Frosted Tempered Glass  <b>Note:</b> Optics for use with 'T' clear glass lens. They are not intended for 'K' or 'G' lens - use 0 - None	00 - None							

Job Name/Date:

Fixture Type Designation:

## SUGGESTED POWER SUPPLIES

24VDC

Part Number	Description	Input/Output	# of Fixtures	
			1W	3W
<a href="#">PPLT00155</a>	Non-Dim	120VAC to 24VDC, 30W, Class 2	1-24	1-8
<a href="#">PPLT00586</a>	Non-Dim	120-277VAC to 24VDC, 40W, Class 2	1-32	1-10
<a href="#">PPLT00158</a>	Non-Dim	120VAC to 24VDC, 100W, Class 2	1-80	1-26

## Suggested Lutron Compatible

Part Number	Option	Lutron SKU	Dim Range	Description	Input/Output	# of Fixtures	
						1W	3W
<a href="#">PPLT00273</a>	L3DAE / L3DA3W	L3DA	100%-1%	Hi-Lume™ 1% EcoSystem™ or 1% 3-Wire LED Driver	120-277VAC to 24VDC, 40W, Class 2	1-32	1-10
<a href="#">PPLT00530</a>	L3DAE / L3D0	L3DA/L3D0	100%-1%	Hi-Lume™ 0.1% EcoSystem™ or 3-Wire LED Driver	120-277VAC to 24VDC, 96W, Class 2	1-76	1-25

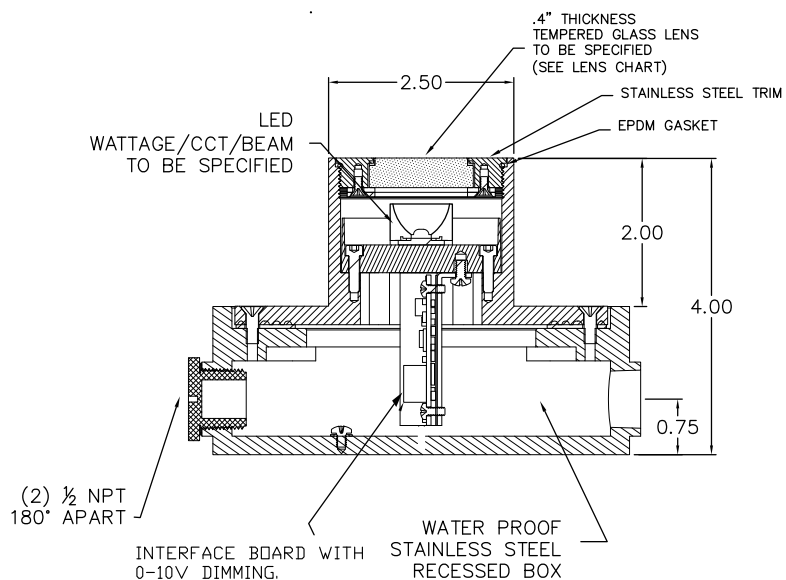
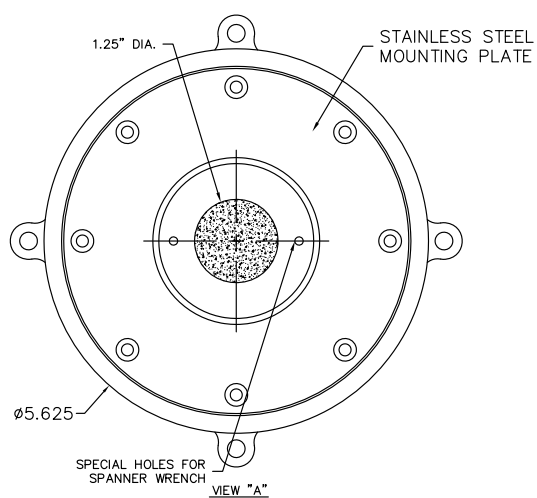
For other power supply options consult factory.

**NOTE: 0-10V DIMMING INTERFACE INCLUDED - to be wired separately**

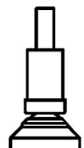
Job Name/Date:

Fixture Type Designation:

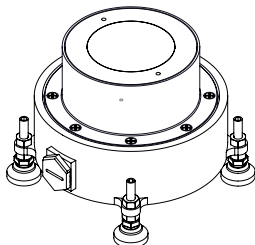
## FIXTURE DIMENSIONS



## ACCESSORIES - Installation



**LL301** - Optional  
Leveling Pad  
Set of 4



Job Name/Date:

Fixture Type Designation: