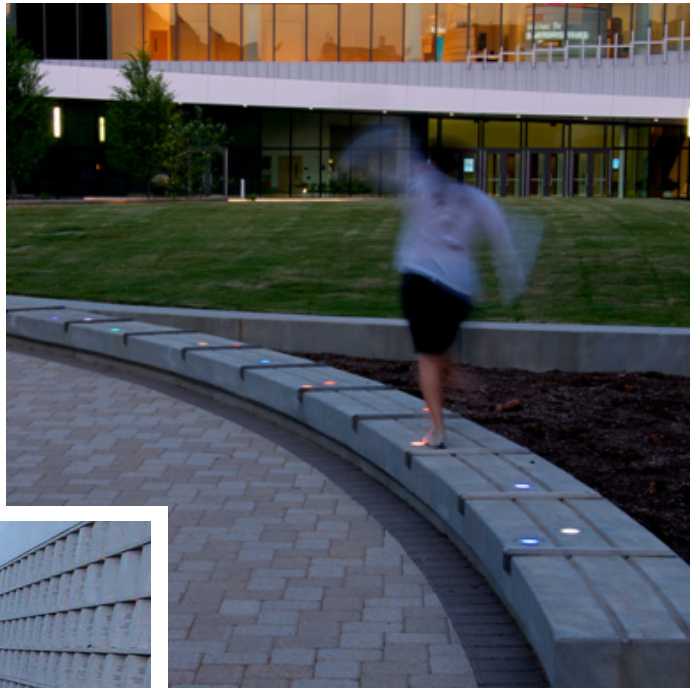


# CENTAUR

## IP69K - Ingrade Uplights



designplan® 

The Centaur C1X, C2X, C4X, C4G and C4C are made of stainless steel and are rated IP68 and IP69K (suitable for power washing).

**Available in 1", 2.5" and 4" diameter (4" also comes in RGB).**

**Finish is Stainless Steel 304 Alloy.**

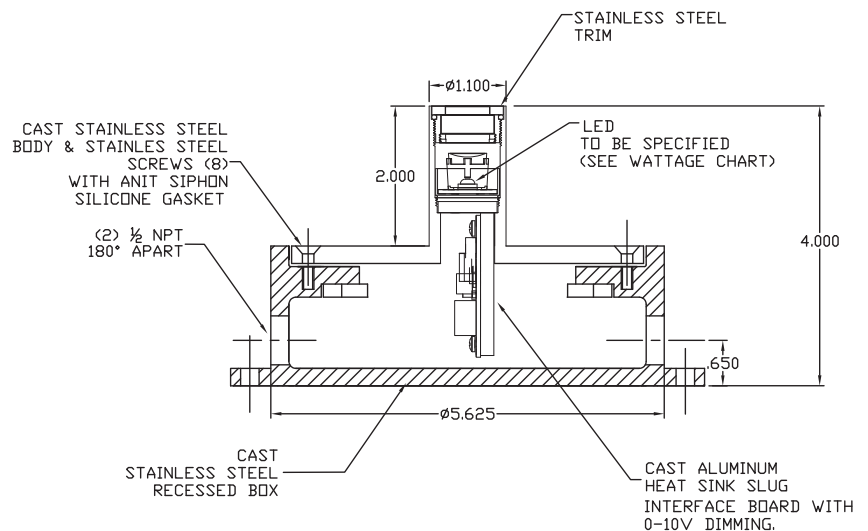
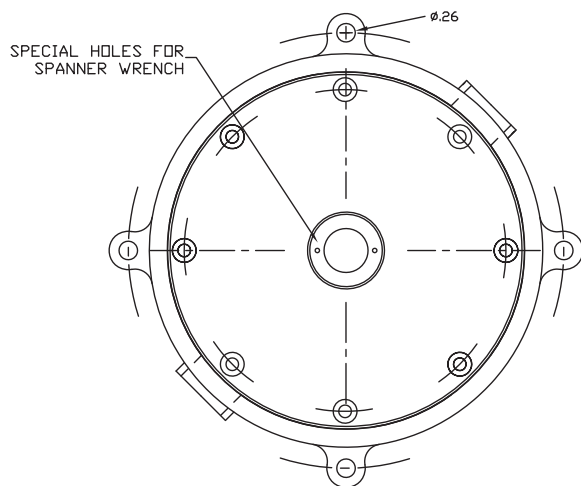
**Driveover rated up to 11,000 lbs.**

## Centaur C1X



**Centaur C1X is a 1" diameter ingrade uplight.**

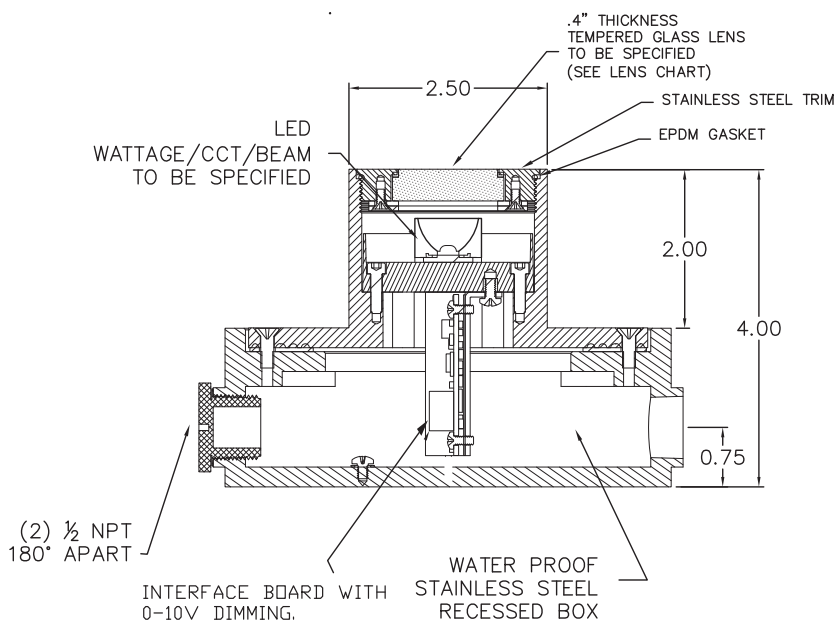
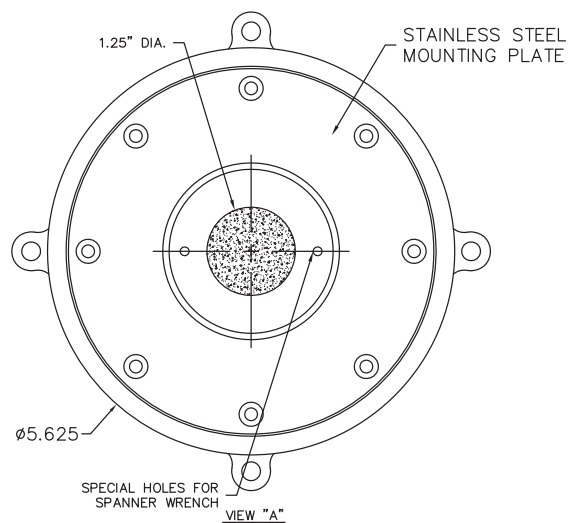
<b>Wattage / Input</b>	1W (24VDC)
<b>Power Supply</b>	Remote, not included. See datasheet
<b>Construction</b>	Body and Trim: Stainless Steel 304 Alloy Jbox: Cast Stainless Steel Lens: 0.4" Tempered Glass Lens Frame: Threaded Bottlecap
<b>CCT</b>	3000K, 5000K
<b>CRI</b>	CRI>80
<b>Delivered Lumens</b>	44 lm (3000K, 24VDC)
<b>Optics</b>	0°, 6°, 25°
<b>Fixture Dimensions</b>	Ø1.0" x 4.0" h
<b>LED Source</b>	1 Cree XPE LED



# Centaur C2X

Centaur C2X is a 2.5" diameter ingrade upright.

<b>Wattage / Input</b>	1W, 3W (24VDC)
<b>Power Supply</b>	Remote, not included. See datasheet.
<b>Construction</b>	Body and Trim: Stainless Steel 304 Alloy Jbox: Cast Stainless Steel Lens: 0.4" Tempered Glass Lens Frame: Threaded Bottlecap
<b>CCT</b>	3000K, 4000K, 5000K
<b>CRI</b>	CRI>80
<b>Delivered Lumens</b>	260 lm (3000K, 24VDC)
<b>Optics</b>	0°, 10° Narrow, 21° Medium, 39° Wide, 10°x44° Elliptical
<b>Fixture Dimensions</b>	Ø2.5" x 4.0" h
<b>LED Source</b>	1 Cree XPE LED

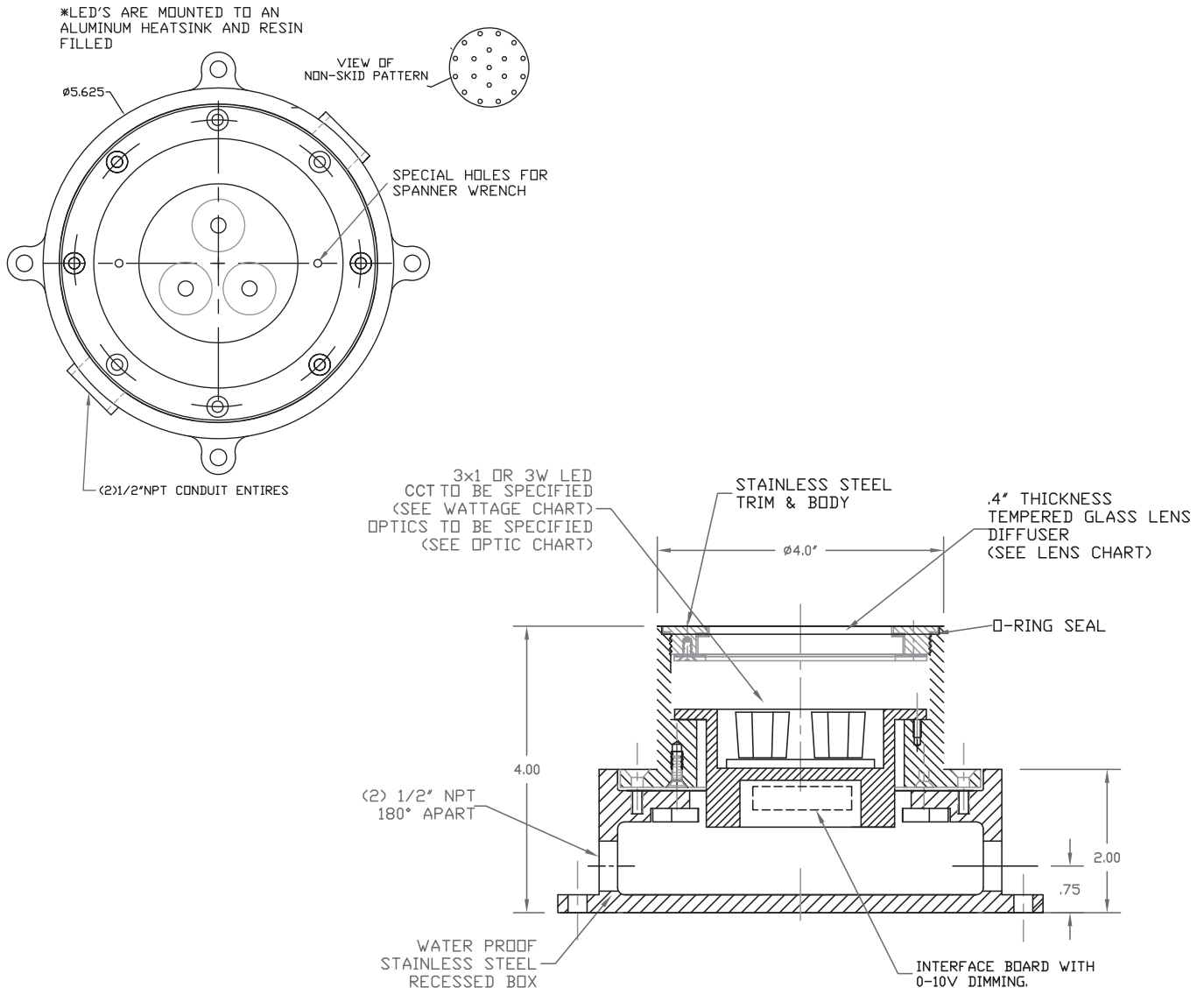


# Centaur C4X



**Centaur C4X is a 4" diameter ingrade uplight.**

<b>Wattage / Input</b>	3W, 9W (24VDC)
<b>Power Supply</b>	Remote, not included. See datasheet.
<b>Construction</b>	Body and Trim: Stainless Steel 304 Alloy Jbox: Cast Stainless Steel Lens: 0.4" Tempered Glass Lens Frame: Threaded Bottlecap
<b>CCT</b>	3000K, 4000K
<b>CRI</b>	CRI>80
<b>Delivered Lumens</b>	780 lm (3000K, 24VDC)
<b>Optics</b>	0°, 6° Narrow, 25° Wide, 6°x25° Elliptical
<b>Fixture Dimensions</b>	Ø4.0" x 4.0" h

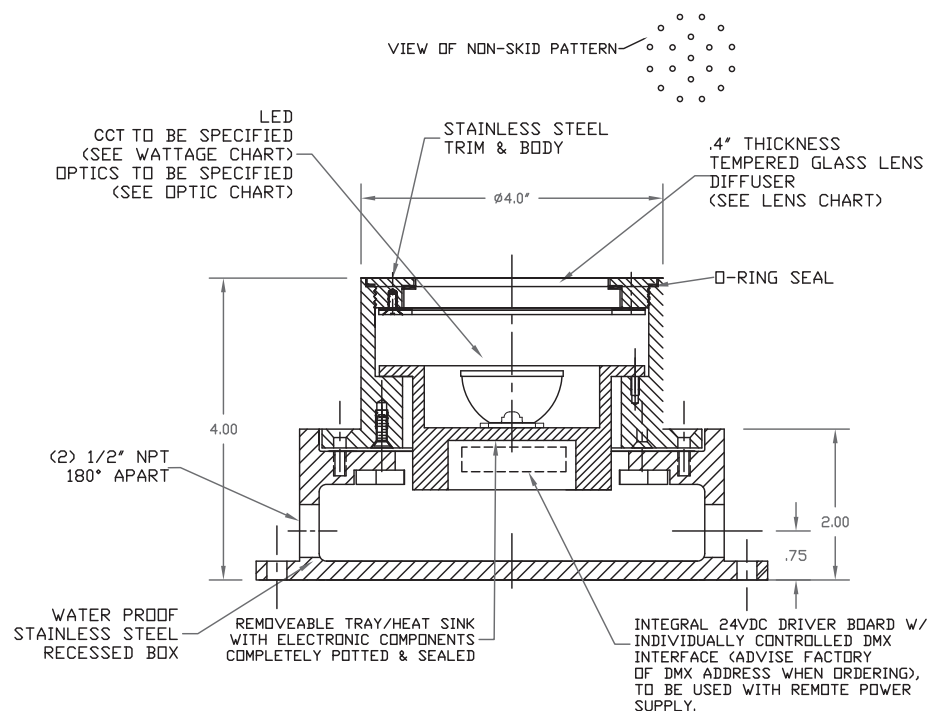
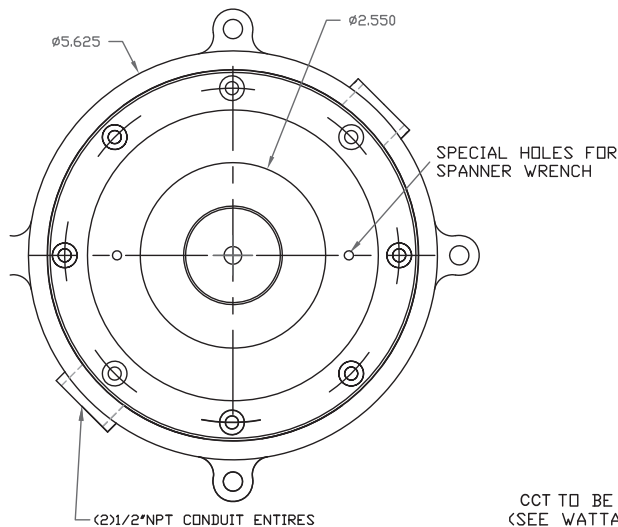


# Centaur C4C



**Centaur C4C is a 4" diameter ingrade uplight.**

<b>Wattage / Input</b>	5W (24VDC) RGBW or Tunable White
<b>Power Supply</b>	Remote, not included. See datasheet.
<b>Construction</b>	Body and Trim: Stainless Steel 304 Alloy Jbox: Cast Stainless Steel Lens: 0.4" Tempered Glass Lens Frame: Threaded Bottlecap
<b>CCT</b>	RGBW, Tunable White
<b>CRI</b>	CRI>80
<b>Delivered Lumens</b>	360 lm (3000K)
<b>Optics</b>	0°, 10° Narrow, 30° Medium
<b>Fixture Dimensions</b>	Ø4.0" x 4.0" h





# Centaur C4G

Centaur C4G is a 4" diameter ingrade upright.

<b>Wattage / Input</b>	3W (120-277VAC)
<b>Power Supply</b>	Integral 120-277VAC Non-Dim
<b>Construction</b>	Body and Trim: Stainless Steel 304 Alloy Jbox: Cast Stainless Steel Lens: 0.4" Tempered Glass Lens Frame: Threaded Bottlecap
<b>CCT</b>	3000K, 4000K
<b>CRI</b>	CRI>80
<b>Delivered Lumens</b>	360 lm (3000K)
<b>Optics</b>	0°, 6° Narrow, 25° Wide, 6°x25° Elliptical
<b>Fixture Dimensions</b>	Ø4.0" x 4.0" h

