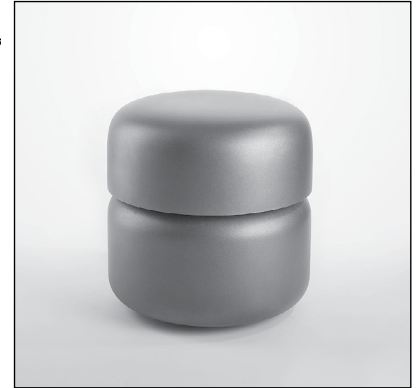


## ILLUMINATED BOLLARD / SEAT

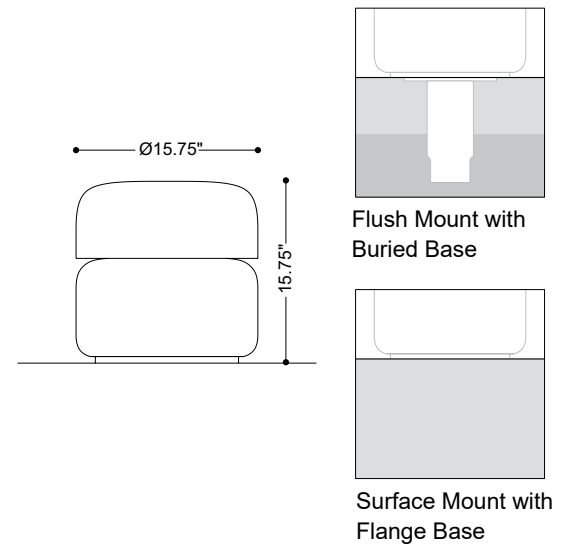
The E-LB23 Illuminated Bollard/Seat with Symmetrical Optics provides general area illumination and also functions as pedestrian seating. Optional accent lighting at ground level. Made of hot-dip galvanized steel with a polyester powder coat finish.



Fixture Dimensions  
Ø15.75" x 15.75"h

### TECHNICAL DATA

<b>Wattage / Input</b>	21.6W (120-277V)
<b>Power Supply</b>	Integral
<b>Construction</b>	Body /Buried Base: Hot-dip Galvanized Steel Flange Plate: Stainless Steel LED Ground/Upper Illumination Component: Aluminum, with transparent glass cover Designed for feed-through wiring
<b>CCT</b>	4000K
<b>CRI</b>	>80
<b>Optics</b>	Ground/Upper Illumination Component: Diffuse
<b>Finishes</b>	Silver Gray Polyester Powder Coating (DB 703) Custom RAL Upon Request
<b>Fixture Dimensions</b>	Ø15.75" x 15.75"h
<b>Fixture Weight</b>	26.46 lbs
<b>LED Source</b>	1 LED module with 18 high-performance LEDs (Ground/Upper Illumination Component)
<b>Color Consistency</b>	3-Step MacAdam
<b>Operating Temp.</b>	-13°F to +122°F
<b>IP Rating</b>	IP65
<b>Impact Rating</b>	IK10



### ORDERING INFORMATION

Example: E-LB23-3011410.

Model No.		CCT	Finish
E-LB23-3011401	Illuminated - Flush Mount with Buried Base	4000K	Silver Gray <i>Consult factory for Custom RAL</i>
E-LB23-3011405	Illuminated - Surface Mount with Flange Base		
E-LB23-3011409	Non Illuminated - Flush Mount with Buried Base		
E-LB23-3011410	Non Illuminated - Surface Mount with Flange Base		

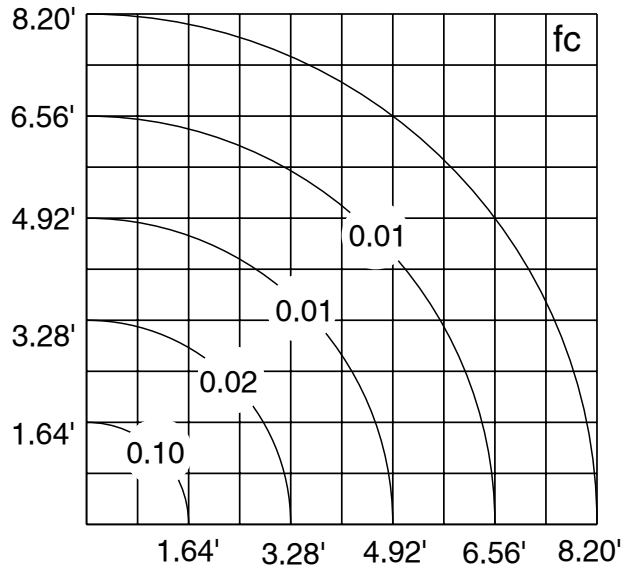
Job Name/Date:

Fixture Type Designation:

## ILLUMINATED BOLLARD / SEAT

### PHOTOMETRIC DATA

Note all Photometry is 4000K



Job Name/Date:

Fixture Type Designation: