

# EYE R 80 • EYE R 125 • EYE R 200

## Surface Version

EYE R is a ceiling lamp that comes in a recessed or surface-mounted version with 3 sizes each. It offers high luminous efficiency and perfect luminance control with 3 optics options: spot, flood and wide flood.



Fixture Dimensions - see page 2

### TECHNICAL DATA

<b>Wattage</b>	5W, 12W, 19W
<b>Power Supply</b>	Remote 24VDC - See page 3 and 4 (EYE R 80) Remote 350mA (EYE R 125), 500mA (EYE R 200)
<b>Construction</b>	Body: Die-Cast Aluminum Lens: Extra Clear Glass Diffuser
<b>CCT</b>	2700K, 3000K (4000K on request)
<b>BUG Rating</b>	B1-U0-G0 (EYE R 80 40° & 60°) B1-U1-G0 (EYE R 125 40° & 60°) B2-U1-G0 (EYE R 200 40° & 60°)
<b>CRI</b>	>90
<b>Delivered Lumens</b>	400 lm (EYE R 80, 40°, 3000K) 950 lm (EYE R 125, 40°, 3000K) 1400 lm (EYE R 200, 40°, 3000K)
<b>Efficacy</b>	80 lm/W (EYE R 80, 40°, 3000K) 63 lm/W (EYE R 125, 40°, 3000K) 58 lm/W (EYE R 200, 40°, 3000K)
<b>Optics</b>	20°, 40°, 60°
<b>Finishes</b>	5 Standard, See Below
<b>Fixture Dimensions</b>	Ø3.22" x 1.97" (EYE R 80) Ø5.12" x 3.03" (EYE R 125) Ø8.46" x 4.84" (EYE R 200)
<b>Aperature</b>	Ø3.15" (EYE R 80) Ø4.92" (EYE R 125) Ø7.87" (EYE R 200)
<b>Lumen Maintenance</b>	L80, B15 >60,000hrs (Ta 40°C)
<b>Color Consistency</b>	3-Step MacAdam
<b>IP Rating</b>	IP65
<b>Impact Resistance</b>	IK08

### ORDERING INFORMATION

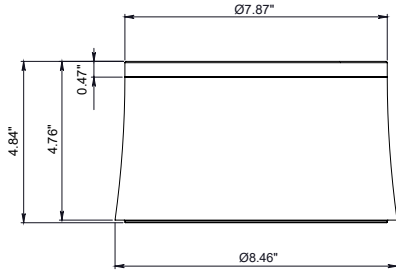
Example: LNEY60POSFHB7ZG.US. Power Supplies / Accessories ordered separately.

LNEY						US
Model #	Size	Optics	CCT	Power	Finish	
LNEY	50 POS - EYE R 80 (5W) 60 POS - EYE R 125 (12W) 80 POS - EYE R 200 (19W)	S - 20° Spot F - 40° Flood W - 60° Wide	Y - 2700K H - 3000K	B7Z - Remote (EYE R 80) BAZ - Remote (EYE R 125) BDZ - Remote (EYE R 200)	L - Graphite V - Oxide U - White G - Black H - Gray	US

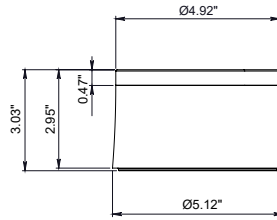
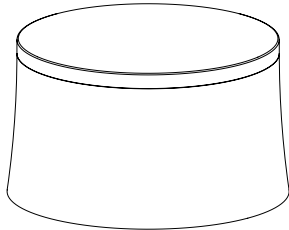
Job Name/Date:

Fixture Type Designation:

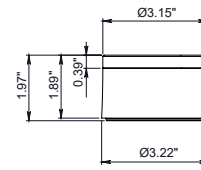
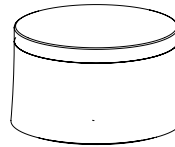
### FIXTURE DIMENSIONS



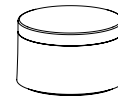
EYE 200



EYE 125



EYE 80



Job Name/Date:

Fixture Type Designation:

### SUGGESTED POWER SUPPLIES

24VDC - EYE R 80 (5W)

Part Number	Description	Input/Output	# of Fixtures - 5W
<a href="#">PPLT00284</a>	Non-Dim	120-277VAC to 24VDC, 100W, Class 2	1-16
<a href="#">PPLT00543</a>	0-10V Dimming to 15% (-40°C / -40°F cold weather start)	120-277VAC to 24VDC, 100W, Class 2	2-16

### Suggested Lutron Compatible - EYE R 80 (5W)

Part Number	Option	Lutron SKU	Dim Range	Description	Input/Output	# of Fixtures
<a href="#">PPLT00500</a>	LTEA2W	LTEA	100%-1%	Hi-Lume™ 1% 2-Wire LED Driver (120V forward phase only)	120VAC to 24VDC, 40W, Class 2	1-6
<a href="#">PPLT00273</a>	L3DAE / L3DA3W	L3DA	100%-1%	Hi-Lume™ 1% EcoSystem™ or 1% 3-Wire LED Driver	120-277VAC to 24VDC, 40W, Class 2	1-6

350mA - EYE R 125 (12W)

Part Number	Description	Input/Output	# of Fixtures - 12W
<a href="#">PPLT00468</a>	Phase Dim (120V only)	120VAC to 350mA, 14W, Class 2	1-1
<a href="#">PPLT00722-P</a>	ELV / TRIAC & 0-10V Dimming to 1.0%	120-277VAC to 350mA, 15W, Class 2	1-1
<a href="#">PPLT00263</a>	Leading / Trailing Edge Dimming to 10% (120V only)	120-277VAC to 350mA, 32W, Class 2	1-1

### Suggested Lutron Compatible - EYE R 125 (12W)

Part Number	Option	Lutron SKU	Dim Range	Description	Input/Output	# of Fixtures
<a href="#">PPLT00271</a>	LTEA2W	LTEA	100%-1%	Hi-Lume™ 1% 2-Wire LED Driver (120V forward phase only)	120VAC to 350mA, 13W, Class 2	1-1
<a href="#">PPLT00516</a>	L3DAE / L3DA3W	L3DA	100%-1%	Hi-Lume™ 1% EcoSystem™ or 1% 3-Wire LED Driver	120-277VAC to 350mA, 13W, Class 2	1-1

500mA - EYE R 200 (19W)

Part Number	Description	Input/Output	# of Fixtures - 19W
<a href="#">PPLT00527</a>	Phase Dim (120V only)	120VAC to 500mA, 20W, Class 2, IP66	1-1
<a href="#">PPLT00262</a>	Leading / Trailing Edge Dimming to 10% (120V only)	120-277VAC to 500mA, 32W, Class 2	1-1

### Suggested Lutron Compatible - EYE R 200 (19W)

Part Number	Option	Lutron SKU	Dim Range	Description	Input/Output	# of Fixtures
<a href="#">PPLT00195</a>	L3DAE / L3DA3W	L3DA	100%-1%	Hi-Lume™ 1% EcoSystem™ or 1% 3-Wire LED Driver	120-277VAC to 500mA, 19W, Class 2	1-1

For other power supply options consult factory.

Job Name/Date:

Fixture Type Designation:

### DRIVERS IN NEMA ENCLOSURE

Remote 24VDC - ELV / TRIAC / 0-10V



PPLT00715

Part Number	Description	Input/Output	# of Fixtures 5W
<a href="#">PPLT00715</a>	ELV / TRIAC / 0-10V Dimming to 0.1%	120-277VAC to 24VDC, 96W, Class 2, WET/DAMP	1-15

*For other power supply options consult factory.*

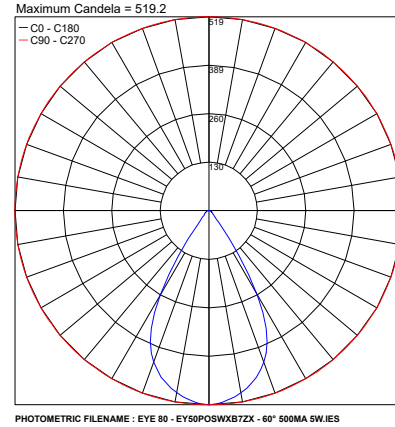
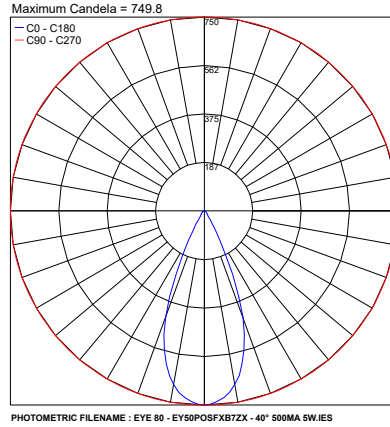
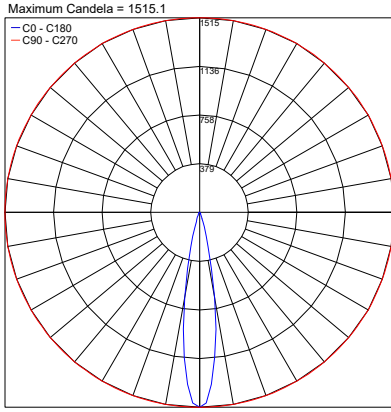
Job Name/Date:

Fixture Type Designation:

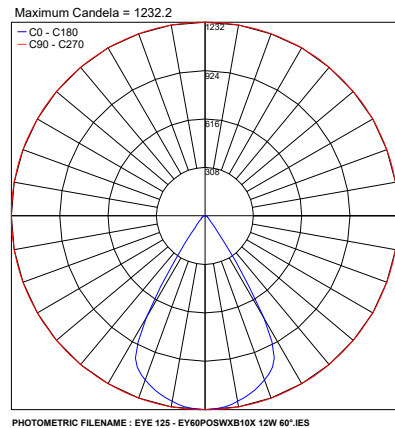
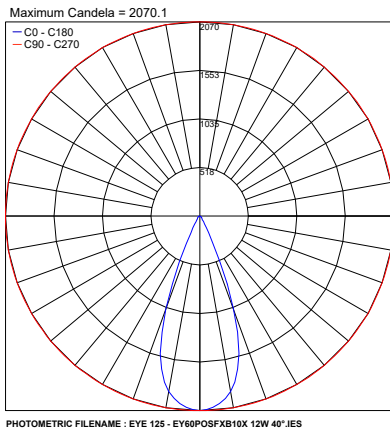
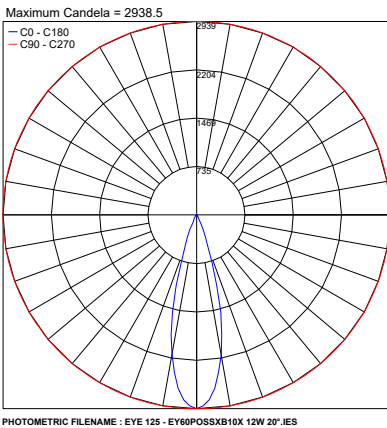
### PHOTOMETRIC DATA

Note: All photometric data is 3000K

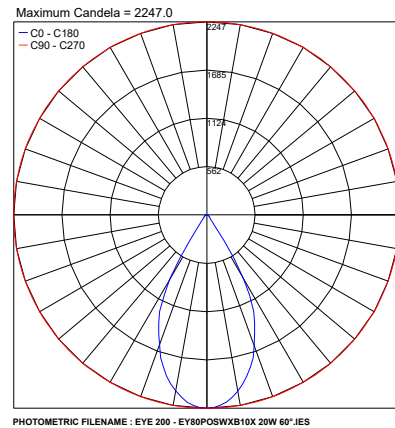
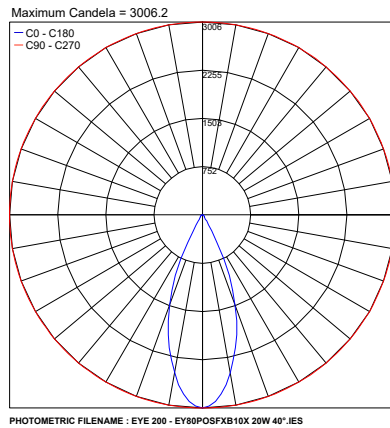
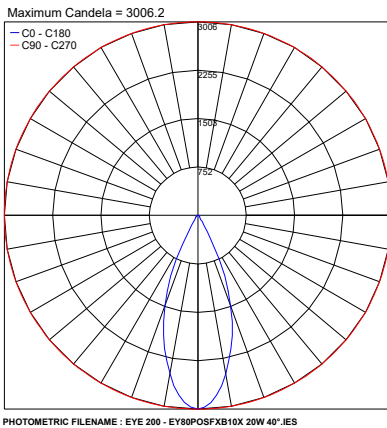
#### EYE R 80



#### EYE R 125



#### EYE R 200



Job Name/Date:

Fixture Type Designation: