

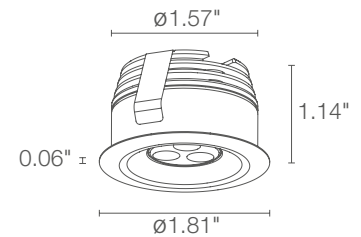
The Esem Mid 1.0 recessed 3W LED downlight, perfect for general and effect lighting. Featuring a discreet, elegant design, perfect for applications in the residential, commercial or hospitality spheres.



TECHNICAL DATA

Wattage / Input	3W (350mA)
Power Supply	Remote, not included. See page 2.
Construction	Body/Trim: Anodized aluminum EN AW 6026 Cable Length: 4.92'
CCT	2700K, 3000K, 4000K, 5000K
CRI	CRI>80
Delivered Lumens	220 lm (3000K, 22°)
Efficacy	73.3 lm/W
Optics	4 Standard (see below)
Finishes	3 Standard, Custom RAL (see below)
Cut-Out Dimensions	Ø1.61"
Fixture Dimensions	Ø1.81" x 1.14" h
Fixture Weight	0.11 lbs
LED Source	3 Power LED
Lumen Maintenance	L95,B10>50,000hrs (Ta 25°C)
Color Consistency	1/4 ANSI BIN
Operating Temp.	32°F to 113°F
IP Rating	IP40, IP44 on request (consult factory)
Impact Rating	—

Ceiling Cut-Out: Ø1.61"
Fixture Dimensions



ORDERING INFORMATION

Example: EM1031FSB. Power Supplies / Accessories ordered separately.

EM1031			
Model No.	CCT	Optics	Finish
EM1031	F - 2700K 5 - 3000K 9 - 4000K 0 - 5000K	S - 11° M - 22° L - 30° W - 20° x 45°	B - White N - Black A - Anodized Aluminum C - Custom RAL (Consult factory for "C")

Job Name/Date:

Fixture Type Designation:

SUGGESTED POWER SUPPLIES

350mA

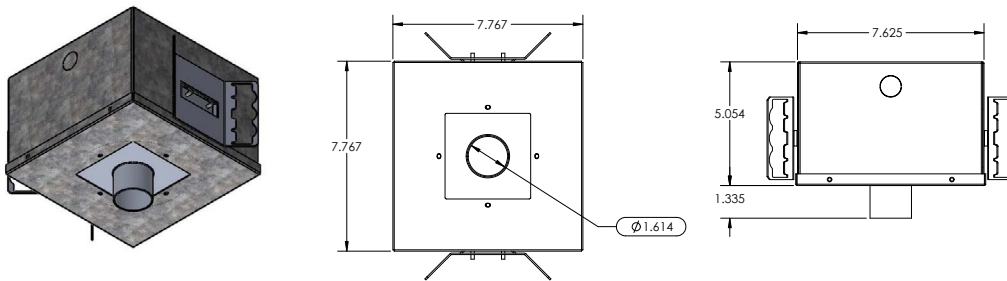
Part Number	Description	Input/Output	# of Fixtures
PPLT00148	0-10V Dimming to 10%	120-277VAC to 350mA, 6W, Class 2	1-2
PPLT00496	Phase Dim (120V only)	120VAC to 350mA, 12W, Class 2	1-3
PPLT00465-P	0-10V Dimming to 1.0%	120-277VAC to 350mA, 20W, Class 2	1-5
PPLT00308-P	0-10V Dimming to 0.1%	120-277VAC to 350mA, 30W, Class 2	1-5

Suggested Lutron Compatible Drivers

Part Number	Option	Lutron SKU	Dim Range	Description	Input/Output	# of Fixtures
PPLT00516	L3DAE / L3DA3W	L3DA	100%-1%	Hi-Lume™ 1% EcoSystem™ / 1% 3-Wire LED Driver	120-277VAC, 13W	2-3
PPLT00179	L3DAE / L3DA3W	L3DA	100%-1%	Hi-Lume™ 1% EcoSystem™ / 1% 3-Wire LED Driver	120-277VAC, 19W	4-5

For other power supply options consult factory.

ACCESSORIES - Installation



AH-00012-IC (IC Rated)

AH-00012-CP (Chicago Plenum Rated)

Housing for recessed installation in ceilings.

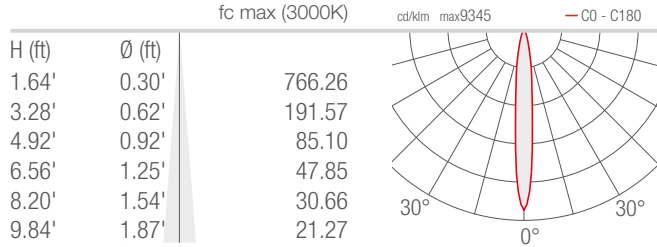
Job Name/Date:

Fixture Type Designation:

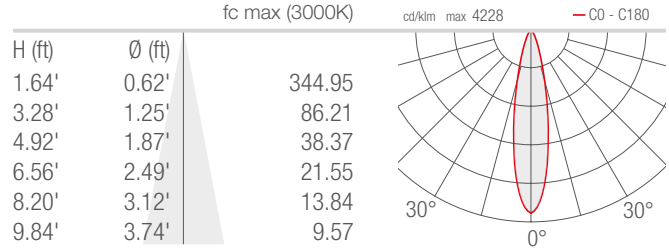
PHOTOMETRIC DATA

Note all Photometry is 3000K

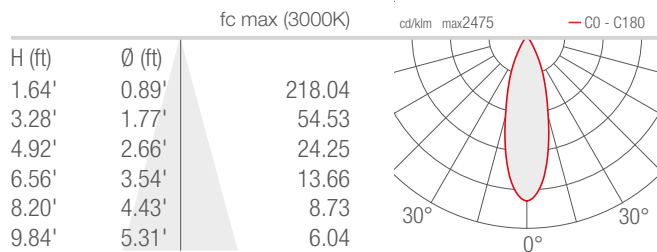
S - 11°



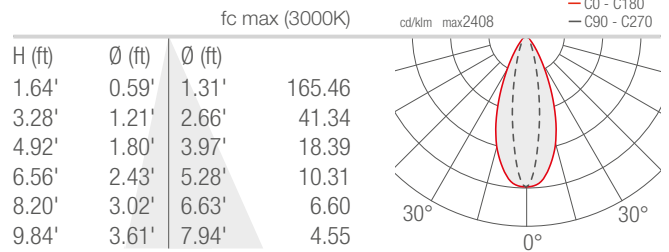
M - 22°



L - 30°



W - 20°x45°



Job Name/Date:

Fixture Type Designation: