



INSTRUCTIONS PERTAINING TO RISK OF FIRE OR INJURY TO PERSONS. READ ALL INSTRUCTIONS. IMPORTANT SAFETY INSTRUCTIONS. SAVE THESE INSTRUCTIONS.

DANGER - RISK OF SHOCK - DISCONNECT POWER BEFORE INSTALLATION! Please read all instructions before installation.

- Keep these instructions for future reference.
- Must be installed by a qualified electrician in accordance with national and local standards. Designplan is not responsible for fixtures installed without regard to these standards.
- Unauthorized alterations or tampering of product voids warranty.
- The main power connection must be in accordance with local electrical codes.
- Suitable for OUTDOOR applications.



IP66 IK08

Electrical Connections:

- LED lights must be **connected in parallel** respecting polarities.
- **CHOOSE POWER SUPPLY ACCORDINGLY.** Please consider the voltage through which fixtures are fed as well as the max power consumption.
- **Connect power only if all the fixtures are connected.**
- The power supplies **MUST** be installed in aerated rooms, far from heat sources. Overworking or lack of air circulation will not permit natural dissipation.
- Use only Class 2 type electronic power supply.
- Never use switches on secondary circuit.

ATTENTION: For Wall/Surface- It is the contractor's responsibility to caulk around all the edges between the fixture and the mounting surface to satisfy wet label requirements.

Maintenance

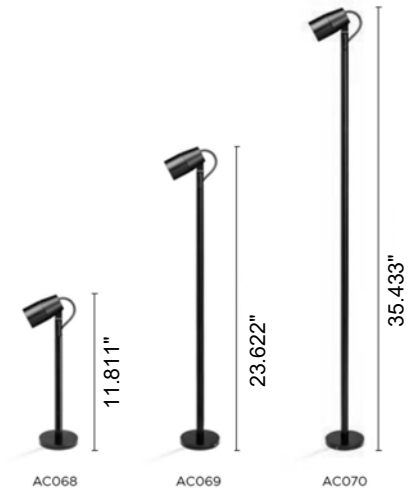
Scheduled maintenance must be carried out once a year on all lighting devices, regardless of appliance class and type of use. It must include the following operations:

- Periodically clean fixtures to remove dirt from gratings and screw heads.
- Check tightness of screws on various parts of the device.
- Check that all cable glands and cables are intact and tight. Check that the glass or plastic lens is intact, and replace it if broken or damaged.
- The internal components such as the ballast, driver, washers and screws must not show clear signs of oxidation or rust. Clear traces of rust and oxidation will indicate the presence of water inside the device.
- In the case of damage, the components must be replaced by original components or spare parts.

Fixture Installation

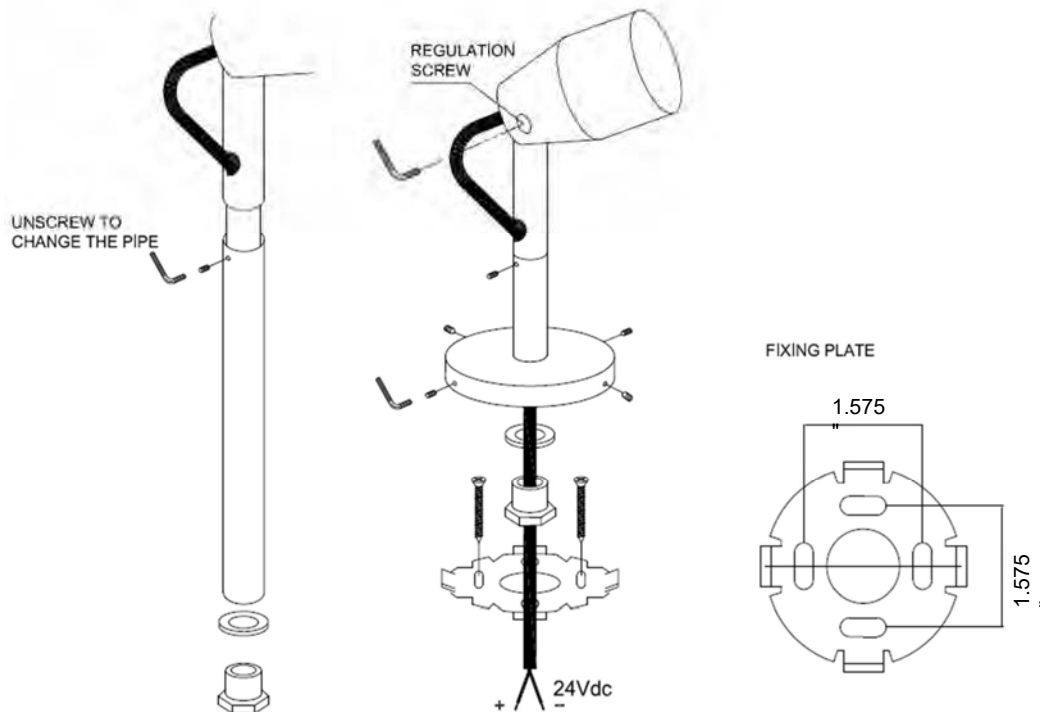
Recommendations:

- 1) Verify that all components used to connect the fixtures are UL listed and comply with all locals and additional electrical laws.
- 2) Use the cables, connectors and quality materials for electrical wiring.
- 3) Products with IP65/68 degree make the wiring / connections with accessories provide the same degree IP of the selected product(available in the catalog).
- 4) For outdoor installations, it is not recommended to install the power supplies in the junction box without adequate protection.


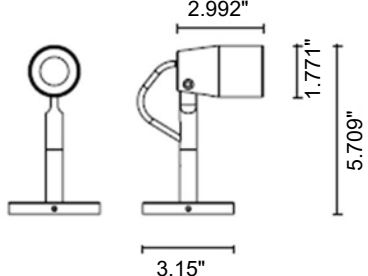

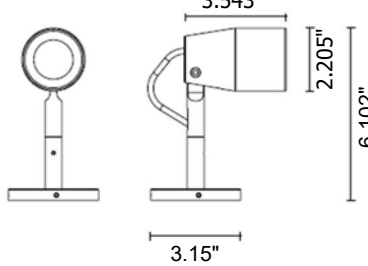


Installation:

- 1) Switch off the power supply before carrying out any maintenance operations.
- 2) Drill holes directly to the feeding point and place plugs (fisher type) and install the fixing base
- 3) Make the adequate electrical connections remembering that is a 24Vdc luminaire respecting the polarity of the cable.
- 4) Fix the luminaire to the base using the tools included in the package and tighten the four grub-screws
- 5) Make any necessary adjustments for the top head screw and then tighten the screw using allen key provided.
- 6) To change the extension pipes uncrew the grub-screw on the top of the pipe and the base fixing nut



Fixture Installation

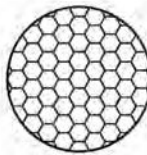
<p>101701P</p> 		<p>FLAMINGO MICRO</p> <ul style="list-style-type: none"> -Power consumption : 2W -Voltage : 24Vdc -Color: 3000K 4000K -Beam angle : 8° 20° 40° -Insulation class: III -IP protection: IP66 -Gross weight: 1.7kg
<p>101702P</p> 		<p>FLAMINGO MINI</p> <ul style="list-style-type: none"> -Power consumption : 6W -Voltage : 24Vdc -Color: 3000K 4000K -Beam angle : 4° 10° 28° -Insulation class: III -IP protection: IP66 -Gross weight: 1.8kg

ACCESSORIES

AC044
SPIKE



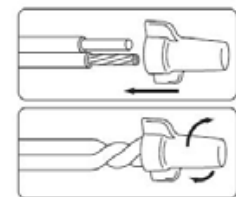
AC066
HONEYCOMB LOUVER



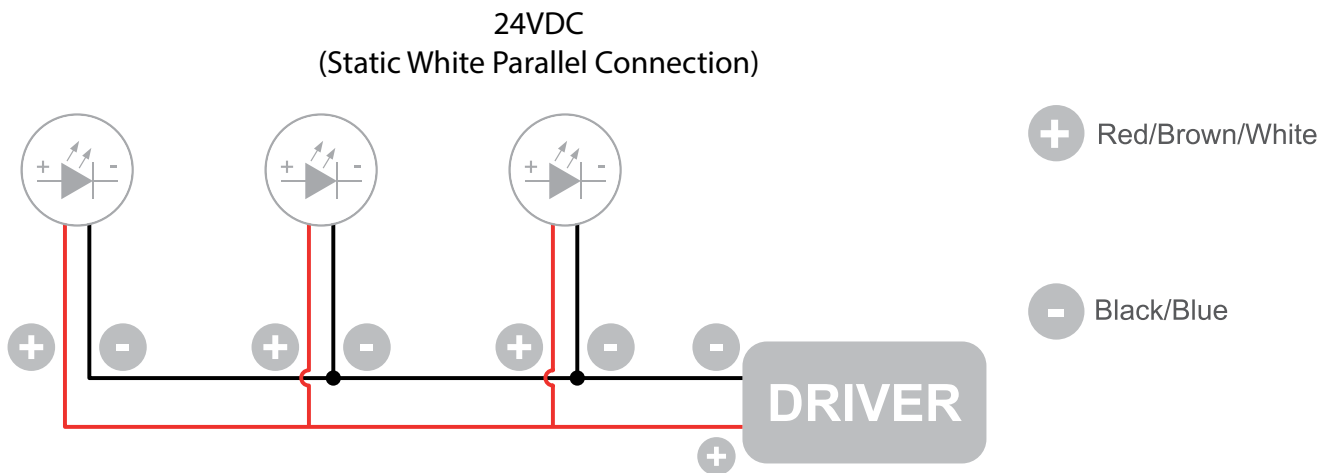
AC038
TREE STRAP



- It is the contractor's responsibility to install Remote Driver in a suitable electrical enclosure.
- Use gel-filled waterproof wire-nuts for wire connections.



Wiring Diagram



The individual lamps must be connected in parallel. Only power up the system once all the lamps have being connected.

- Only power up the system once all the lamps are connected. Connecting an individual lamp to an active power supply may cause the lamp to break due to over-voltage.
- Lamps and power supply units must be installed in well-ventilated boxes or locations to allow a natural heat diffusion and avoid the devices overheating.
- On the power system, install a surge protection device to reduce the intensity of any voltage spikes to protect the lighting fixtures from the risk of damage.
- Fixture NOT suitable for covering with thermally insulating material.