



INSTRUCTIONS PERTAINING TO RISK OF FIRE OR INJURY TO PERSONS. READ ALL INSTRUCTIONS. IMPORTANT SAFETY INSTRUCTIONS. SAVE THESE INSTRUCTIONS.

DANGER - RISK OF SHOCK - DISCONNECT POWER BEFORE INSTALLATION! Please read all instructions before installation.

- Keep these instructions for future reference.
- Must be installed by a qualified electrician in accordance with national and local standards. Designplan is not responsible for fixtures installed without regard to these standards.
- Unauthorized alterations or tampering of product voids warranty.
- The main power connection must be in accordance with local electrical codes.
- Suitable for OUTDOOR applications.



IP67

ATTENTION: For In-Grade - It is the contractor's responsibility to seal the conduit with "Great Stuff" aerosol seal that prevents water and moisture penetration for ultimate protection. Contractor **MUST** use gel-filled wire nuts.

Caution:

Fixture cord grips and water tight plugs are factory installed and tightened to assure designated IP rating of the fixture housing.

Cord grips and plugs can get loose in transit. Before installation please check all components.

It is the contractors responsibility to inspect and tighten if necessary all plugs and cord grips before final installation.

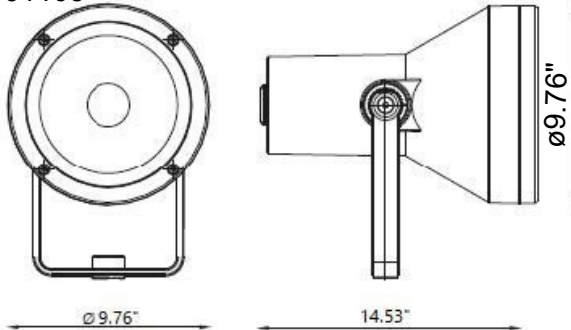
Maintenance

Scheduled maintenance must be carried out once a year on all lighting devices, regardless of appliance class and type of use. It must include the following operations:

- Periodically clean fixtures to remove dirt from gratings and screw heads.
- Check tightness of screws on various parts of the device.
- Check that all cable glands and cables are intact and tight. Check that the glass or plastic lens is intact, and replace it if broken or damaged.
- The internal components such as the ballast, driver, washers and screws must not show clear signs of oxidation or rust. Clear traces of rust and oxidation will indicate the presence of water inside the device.
- In the case of damage, the components must be replaced by original components or spare parts.

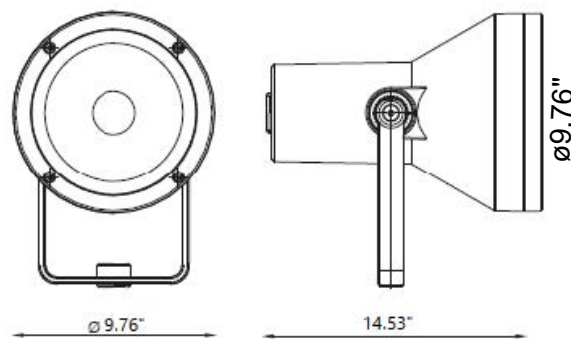
Fixture Installation

COD. 101105



HYDROFLASH MEGA LED
 -Power consumption : 22W
 -Voltage :120VAC 50/60Hz
 -Color Temperature : 3000K/4000K
 -Lens Type : 10° 30° 45°
 -Insulation class: 1
 -IP protection: IP65
 -Gross weight: 5Kg

COD. 101106

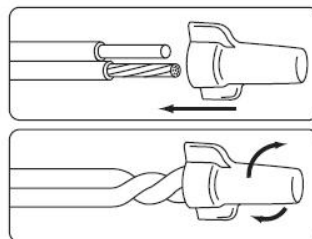


HYDROFLASH MEGA COB LED
 -Power consumption: 55W
 -Voltage :120VAC 50/60Hz
 -Color Temperature : 3000K
 -Lens Type : 35°
 -Insulation class: 1
 -IP protection: IP65
 -Gross weight: 5Kg

-SWITCH-OFF THE POWER SUPPLY BEFORE CARRYING OUT ANY MAINTENANCE OPERATIONS

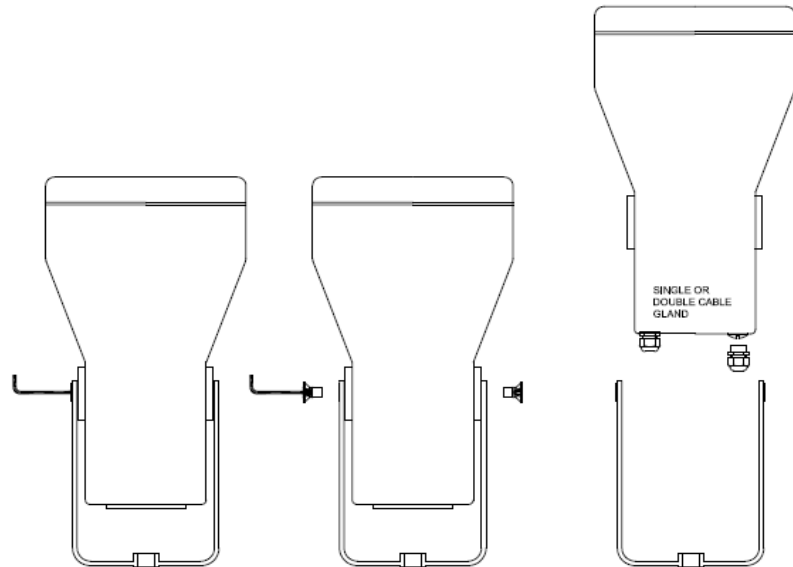
- Drill holes in the fixing point using adequate plugs (not included in the package)
- Fix the bracket of the lighting fixture
- Make the appropriate electrical connection (L-N-PE)
- Position the beam of lighting fixture in the desired manner.
- The cable and the fixture must not be tampered with for any reason.

Before installation please check all components for tightness. It is the contractors responsibility to inspect and tighten if necessary all plugs and cord grips before final installation.

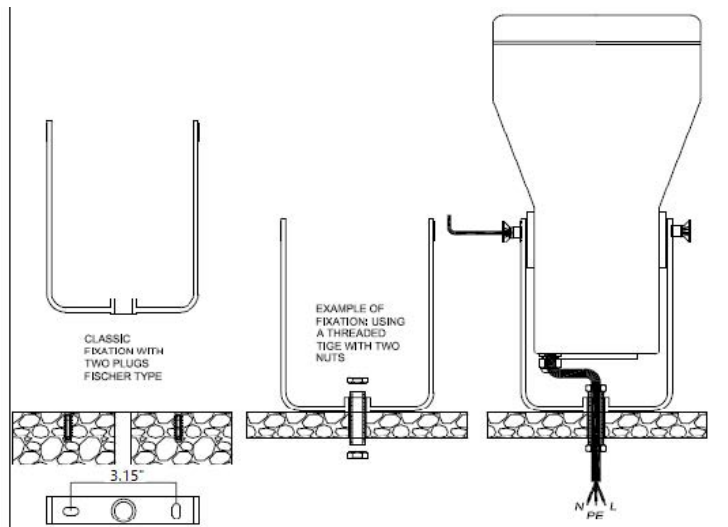


Use gel-filled waterproof wire-nuts for wire connections.

Fixture Installation



FIXING -1 EXAMPLE



FIXING -2 EXAMPLE

