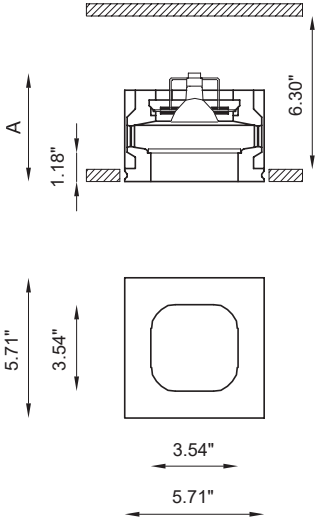


FOCUS

SQUARE RECESSED WITH ROUNDED CORNERS





Focus



OTHER AVAILABLE CODES

BU6163.Z.27.AC	<i>lens</i>	40°
	<i>light color</i>	2700K
BU6163.Z.40.AC	<i>lens</i>	40°
	<i>light color</i>	4000K
example of code composition	27	2700K
	30	3000K
	40	4000K
	BU6169.AC 4 R 40 E 30 WD	

TECHNICAL FEATURES

Code	BU6163.Z.AC
Type	Downlight 90°
	
Material	AC: AirCoral®
Absorption capacity*	43.59 ft²
Weight	3.97 lbs
Mounting	Ceiling recessed
IP rating	IP40
Control gear	Remote constant current electronic driver (not included)
Dimensions	A: 5.51 in
Cut out for plasterboard	6.10 × 6.10 in
Lamp type	LED 500mA  Vf: 18 VDC
Lamp wattage	1 × 9W
Luminous efficacy	1 × 1125 lm - 3000K
Light distribution	Wide beam 40°
Fitting	-
Light color	White 3000K
Light hole	3.54 × 3.54 in
Voltage connection	By driver (optional)
CRI	>90
Note	Extra white satin glass. Frosted glass recessed 1.18 in into the ceiling. Other available light colors: 2700K, 4000K.

OPTIONAL

Brick box	cod. BR6163LT	cod. BR6169LT
-----------	---------------	---------------

designplan® 

79 Trenton Avenue
Frenchtown, NJ 08825

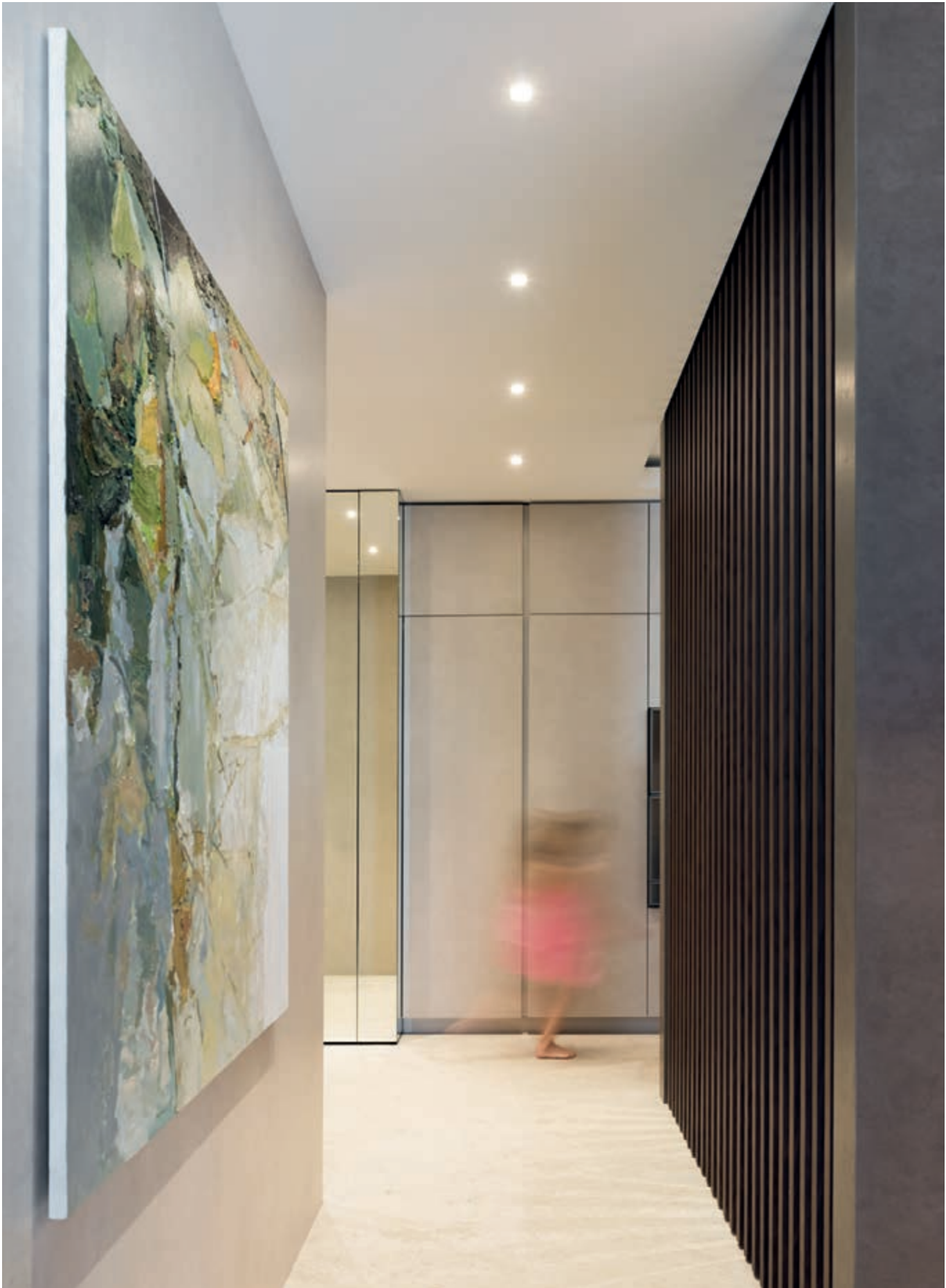
www.designplan.com

Tel: (908) 996-7710
Fax: (908) 996-7042

* The absorption capacity per ft² calculated by the American organization TCNA (Tile Council of North America) is measured for an average room of 8.86 ft in height and therefore expressed in ft²



Focus



* The absorption capacity per ft³ calculated by the American organization TCNA (Tile Council of North America) is measured for an average room of 8.86 ft in height and therefore expressed in ft³