

Gap is a totally disappearing, continuous line, modular system made of AirCoral® for both wall and ceiling installation creating a wall washer effect. The lines of light are 2.36" wide and available in 3000K as standard with 120° light beam.



Fixture Dimensions & Parts  
See page 2

**See required accessories  
for system on page 2**

## TECHNICAL DATA

<b>Wattage / Input</b>	21W (24VDC)
<b>Power Supply</b>	Remote, not included. See page 3
<b>Construction</b>	Body: AirCoral® Lens: Frosted Polycarbonate
<b>CCT</b>	3000K (2700K on request)
<b>CRI</b>	>90
<b>Delivered Lumens</b>	2104 lm (3000K)
<b>Efficacy</b>	100.2 lm/W
<b>Optics</b>	120°
<b>Finishes</b>	AirCoral® Unfinished Plaster
<b>Fixture Dimensions</b>	45.28" l x 4.57" or 2.76" w (x 4.57" h)
<b>Cut-out Dimension</b>	45.28" for each module installed
<b>Aperature</b>	2.36" w (x 45.28" for each module installed)
<b>Fixture Weight</b>	5.51 lbs
<b>IP Rating</b>	IP40

The body is made of Aircoral® a unique patented composite material that actually purifies the air. It can be calculated how many cubic feet each fixture will purify. See website for Aircoral® calculator.

- Additionally, Aircoral® is:
- Antibacterial.
  - Antifungal.
  - Scratch-resistant.
  - Dust-resistant.
  - Suitable for painting.
  - LEED recognized material.

## ORDERING INFORMATION

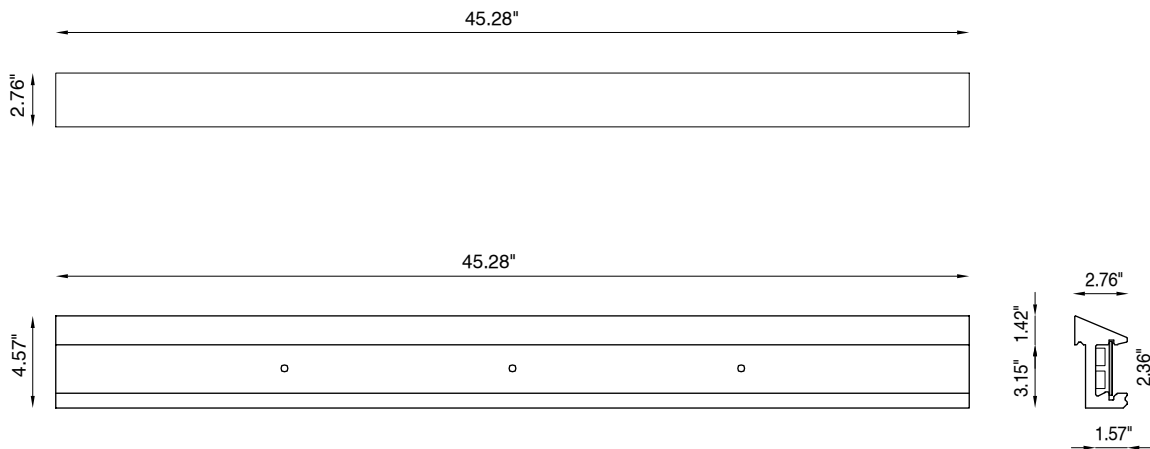
Example: BU8310.AC.30.US + BU8108. Accessories Required / Power Supplies ordered separately.

		<b>US</b>
<b>Model No.</b>	<b>CCT</b>	
<b>BU8300.AC + BU8108</b> (Ceiling Body Frame + Light Source)	<b>30 - 3000K</b> (standard)	<b>US</b>
<b>BU8310.AC + BU8108</b> (Wall Body Frame + Light Source)	<b>27 - 2700K</b> (on request)	

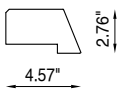
Job Name/Date:

Fixture Type Designation:

**FIXTURE DIMENSIONS**

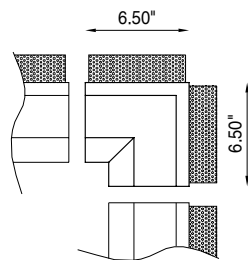


**ACCESSORIES - Installation**

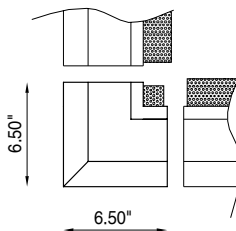


**BU8350.AC**  
Closure Headpart

C. INTERNAL ANGLE



D. EXTERNAL ANGLE



**BU8320**  
Satin Polycarbonate  
Protection Shield

**BU8330.AC** (Internal Angle)  
**BU8340.AC** (External Angle)  
Corner Angle Parts

Job Name/Date:

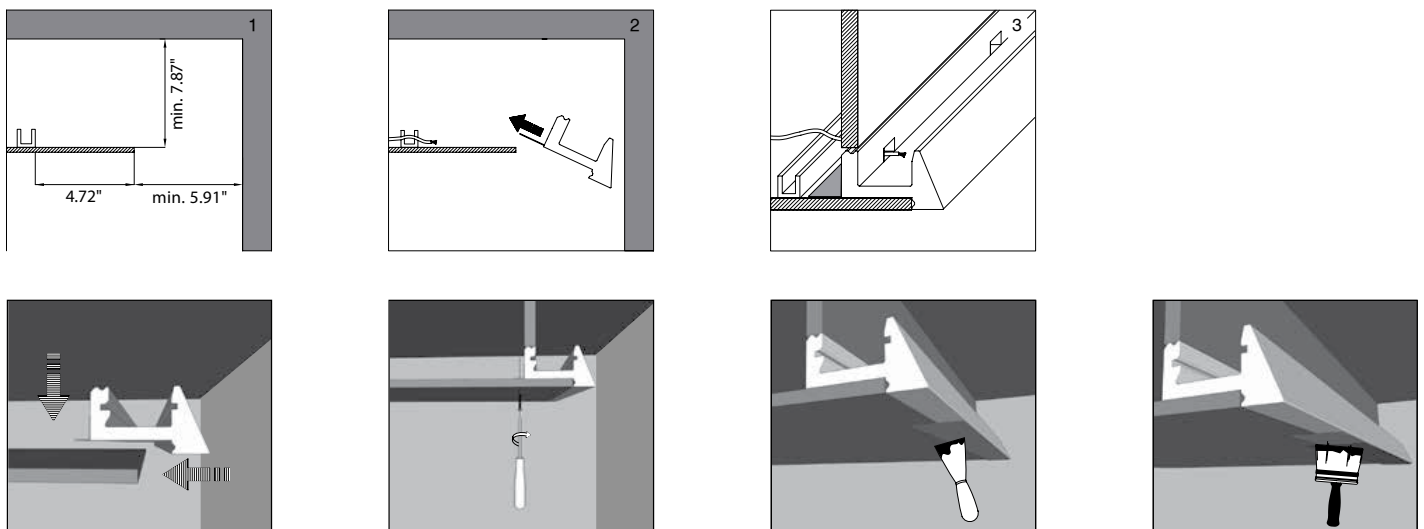
Fixture Type Designation:

**SUGGESTED POWER SUPPLIES**  
24VDC

Part Number	Description	Input/Output	# of Fixtures
<a href="#">PPLT00155</a>	Non-Dim	120VAC to 24VDC, 30W, Class 2	1-1
<a href="#">PPLT00090</a>	Non-Dim	120VAC to 24VDC, 75W, Class 2	1-2
<a href="#">PPLT00709</a>	ELV / TRIAC & 0-10V Dimming	120-277VAC to 24VDC, 96W, Class 2, DAMP	1-3
<a href="#">PPLT00158</a>	Non-Dim	120-277VAC to 24VDC, 100W, Class 2	1-3
<a href="#">PPLT00543</a>	0-10V Dimming to 15% (-40°C / 40°F cold weather start)	120-277VAC to 24VDC, 100W, Class 2	1-3

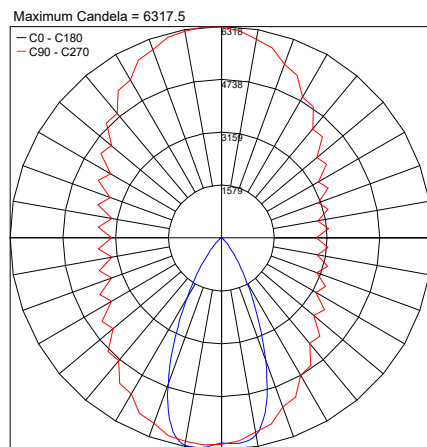
For other power supply options consult factory.

**EXAMPLE OF INSTALLATION**



**PHOTOMETRIC DATA**

Note: All Photometry is 3000K



Job Name/Date:

Fixture Type Designation: