

Gap is a totally disappearing, continuous line, modular system made of AirCoral® for both wall and ceiling installation creating a wall washer effect. The lines of light are 2.36" wide and available in 3000K as standard with 120° light beam.



Fixture Dimensions & Parts
See page 2

**See required accessories
for system on page 2**

TECHNICAL DATA

Wattage / Input	21W (24VDC)
Power Supply	Remote, not included. See page 3
Construction	Body: AirCoral® Lens: Frosted Polycarbonate
CCT	3000K (2700K on request)
CRI	>90
Delivered Lumens	2104 lm (3000K)
Efficacy	100.2 lm/W
Optics	120°
Finishes	AirCoral® Unfinished Plaster
Fixture Dimensions	45.28" l x 4.57" or 2.76" w (x 4.57" h)
Cut-out Dimension	45.28" for each module installed
Aperature	2.36" w (x 45.28" for each module installed)
Fixture Weight	5.51 lbs
IP Rating	IP40

The body is made of AirCoral® a unique patented composite material that actually purifies the air. It can be calculated how many cubic feet each fixture will purify. See website for AirCoral® calculator.

Additionally, AirCoral® is:

Antibacterial.
Antifungal.
Scratch-resistant.
Dust-resistant.
Suitable for painting.
LEED recognized material.

ORDERING INFORMATION

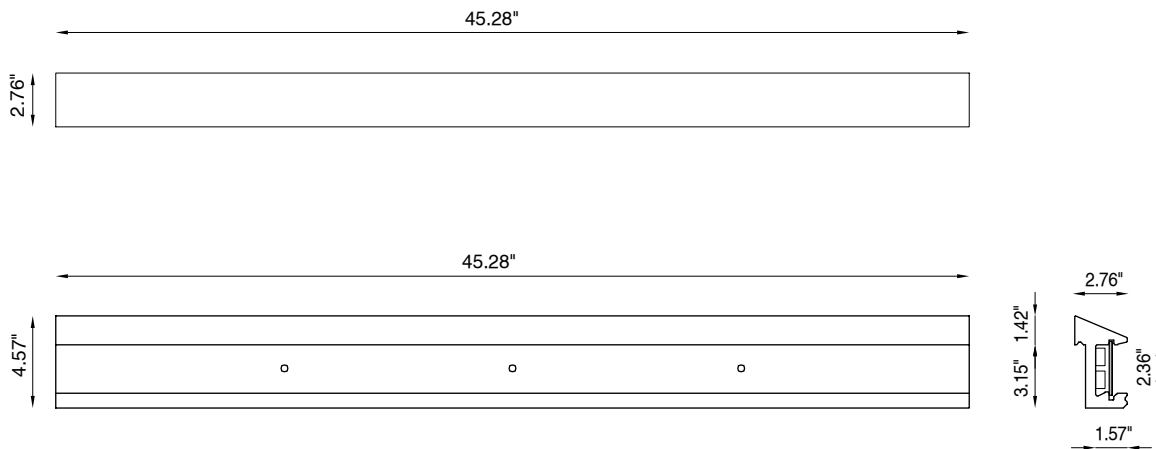
Example: BU8310.AC.30.US + BU8108. Accessories Required / Power Supplies ordered separately.

		US
Model No.	CCT	
BU8300.AC + BU8108 (Ceiling Body Frame + Light Source)	30 - 3000K (standard)	US
BU8310.AC + BU8108 (Wall Body Frame + Light Source)	27 - 2700K (on request)	

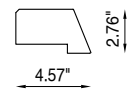
Job Name/Date:

Fixture Type Designation:

FIXTURE DIMENSIONS

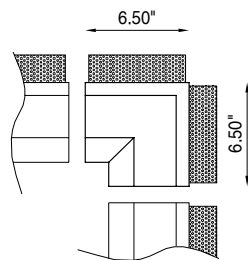


ACCESSORIES - Installation



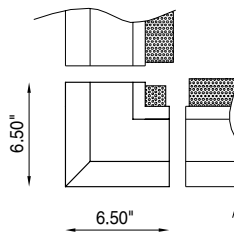
BU8350.AC
Closure Headpart

C. INTERNAL ANGLE



BU8330.AC (Internal Angle)
BU8340.AC (External Angle)
Corner Angle Parts

D. EXTERNAL ANGLE



BU8320
Satin Polycarbonate
Protection Shield

Job Name/Date:

Fixture Type Designation:

SUGGESTED POWER SUPPLIES

24VDC

Part Number	Description	Input/Output	# of Fixtures
PPLT00158	Non-Dim	120-277VAC to 24VDC, 100W, Class 2	1-3
PPLT00543	0-10V Dimming to 15% (-40°C / 40°F cold weather start)	120-277VAC to 24VDC, 100W, Class 2	1-3

DRIVERS IN NEMA ENCLOSURE

Remote 24VDC - ELV / TRIAC / 0-10V

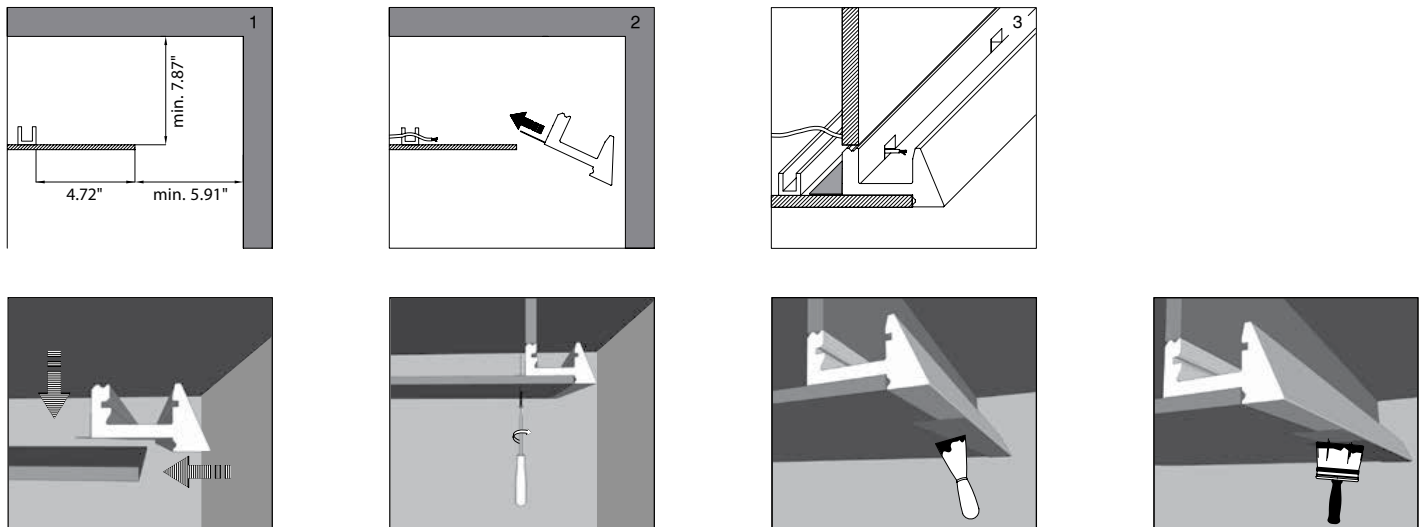


PPLT00715

Part Number	Description	Input/Output	# of Fixtures 21W
PPLT00715	ELV / TRIAC / 0-10V Dimming to 0.1%	120-277VAC to 24VDC, 96W, Class 2, WET/DAMP	1-3

*For other power supply options consult factory.**Job Name/Date:**Fixture Type Designation:*

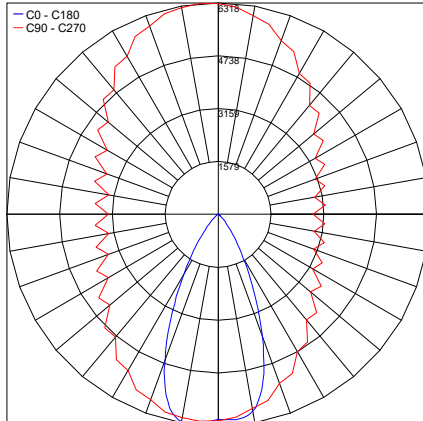
EXAMPLE OF INSTALLATION



PHOTOMETRIC DATA

Note: All Photometry is 3000K

Maximum Candela = 6317.5



PHOTOMETRIC FILENAME : GAP BU8108 LED 21W 30K.IES

Job Name/Date:

Fixture Type Designation: