

GENIUS NAKED IP65

1000 lm FROM A 0.79 in DIAMETER HOLE
RECESSED FIXTURE WITH IP65
PROTECTION FRAMELESS AND
INSPECTABLE

TOTALLY CONCEALED
INSTALLATION WITH ANY MATERIAL



wood



marble



mirror

the lighting body
is pre-mounted on the
cladding panel

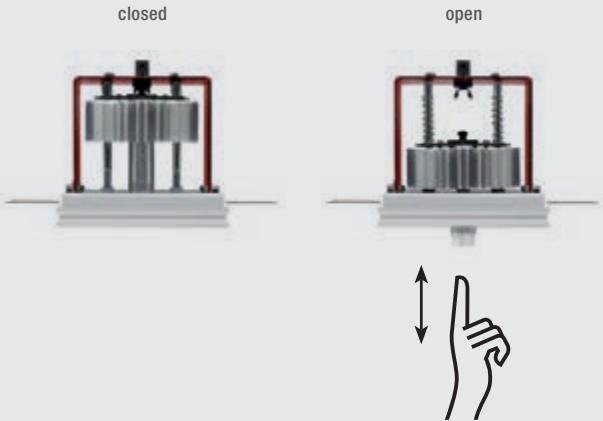
it can be installed on
materials with a thickness
from 0.2" to 0.79"



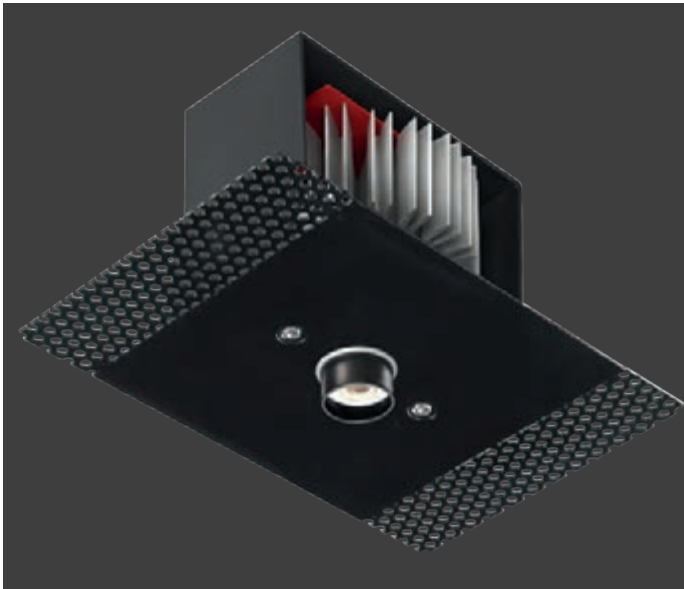
0.79 in

the only visible part is the emission hole of 20 mm (0.79")

PUSH & PULL TECHNOLOGY

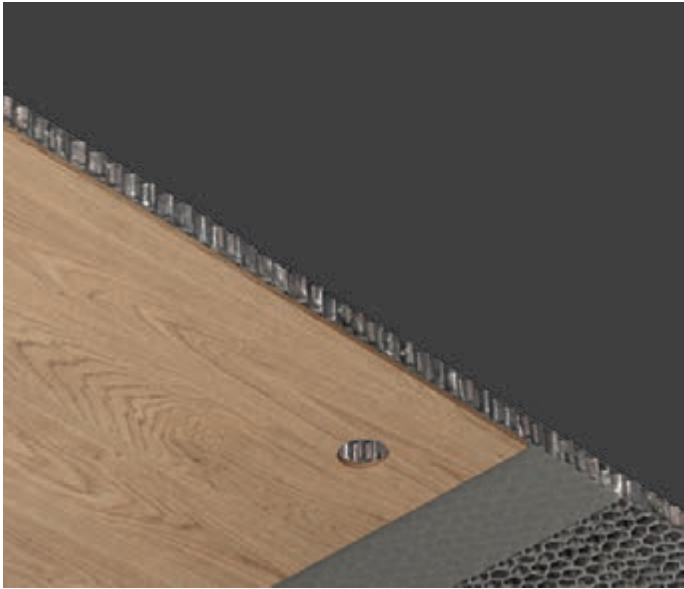


No need for an inspection hatch. The electrical part can be
extracted straight from the light hole just with a simple manual
gesture, thanks to the push-pull mechanism which makes it easy
to extract and replace the LED source for maintenance purposes.

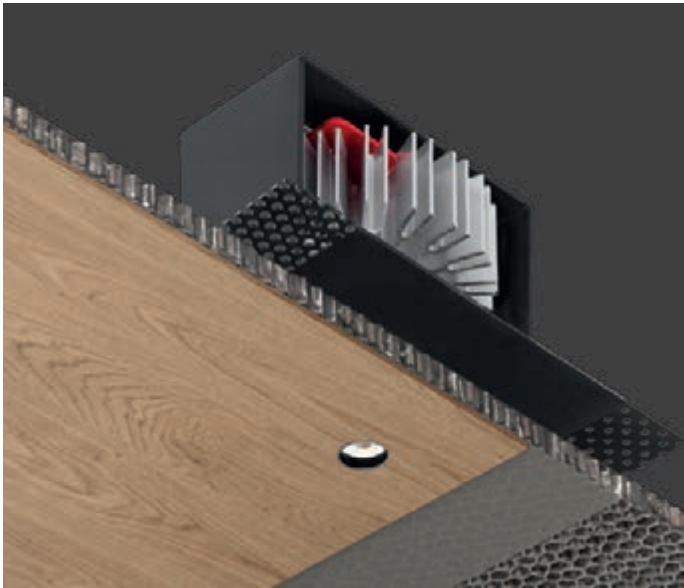


GENIUS NAKED IP65 SUITABLE FOR ANY SURFACE AND MATERIAL

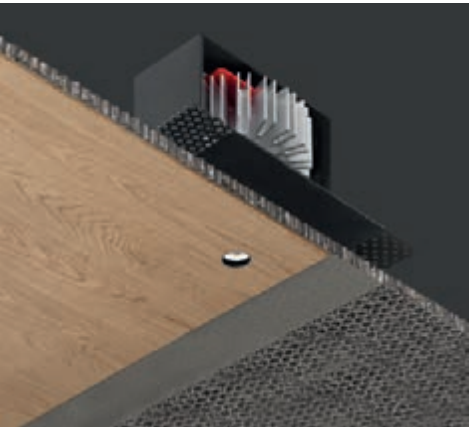
Genius Naked IP65 is the evolution of the Genius family, extending the total surface integration concept to any material and context.



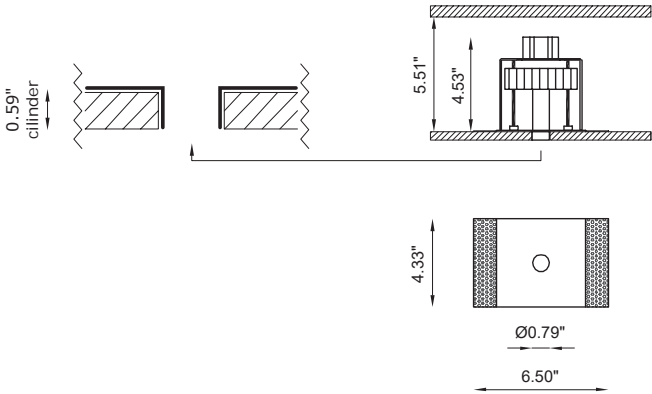
It is a totally recessed luminaire, for ceiling-mounted indoor installation, which can be installed on any surface: wood, cement, mirror, marble, industrial modules with a thickness from 0.2" to a maximum of 0.79".



The only visible part is the light emission hole of only 0.79", capable of generating a powerful light beam.
In fact, the "Naked" version retains all the performances of the Genius, with the electrical part which can be removed through the light hole, thanks to a push-pull mechanism making it easy to pull the LED light source out and replace it, with no need for any inspection hatch, nor for invasive maintenance operations.



Genius Naked IP65



OTHER AVAILABLE CODES

BU2075 BL 4 R _ M _ WD		
	light color	
27	2700K	
30	3000K	
40	4000K (on request)	
	lens	
24	24°	
40	40°	

example of code composition
2075 BL 4 R 40 M 30 WD

TECHNICAL FEATURES

Code	BU2075 XX
Type	Downlight 90°
Material	Aluminum Steel Black
Weight	1.43 lbs
Mounting	Ceiling recessed
IP rating	IP65
Control gear	Remote constant current electronic driver (not included)
Lamp type	LED 700 mA Vf: 11.5 VDC
Lamp wattage	1 × 8.5W
Luminous efficacy	1 × 1000 lm - 3000K
Light distribution	Beam 24° 40°
Fitting	-
Light color	White 3000K White 2700K 4000K (on request)
Light hole	Ø 0.79 in
Voltage connection	By driver (optional)
CRI	>90
Note	Suitable for installation on surfaces max 0.79 in deep.



GENIUS NAKED
see page 132

designplan®

79 Trenton Avenue
Frenchtown, NJ 08825

www.designplan.com

Tel: (908) 996-7710
Fax: (908) 996-7042