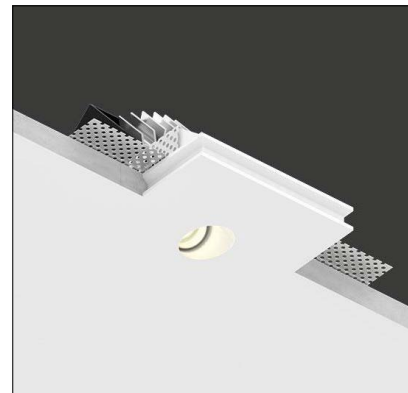


GENIUS BASIC SLOPE

The Genius Basic Slope is an indoor recessed downlight that is perfect for tight ceiling conditions and has an asymmetrical light emission hole with a 40° angled axis. Once installed the discreet aperture of 0.79" disappears into the surround. For installation into plasterboard or ceilings.



TECHNICAL DATA

Wattage / Input	4W (500mA)
Power Supply	Remote, not included. See page 2.
Construction	Body: Coral® Frame: Steel Aluminum Heat Sink
CCT	3000 (2700K, 4000K on request)
CRI	>90
Delivered Lumens	185 lm (3000K)
Efficacy	46.3 lm/W
Optics	24°
Finishes	Unfinished
Cut-Out Dimensions	3.94" x 3.94"
Fixture Dimensions	3.94" l x 3.54" w x 3.15" h
Aperture	Ø0.79"
Fixture Weight	1.43 lbs
LED Source	1 COB LED Removable Cartridge
IP Rating	IP20

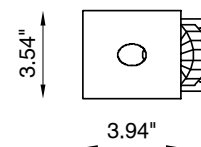
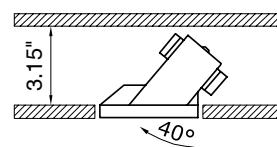
The body is made of Coral® a unique patented composite material made from natural minerals and aggregating elements.

Additionally, Coral® is:

- Extreme resistance to high temperatures and thermal shock.
- Highly impervious to knocks and scratches.
- Can easily be decorated with any type of paint (water or spirit based).
- Made of non-toxic materials and is non-allergic.
- Does not produce fumes, even in case of fire.
- Naturally dust repellent.

Ceiling Cut-Out: 3.94" x 3.94"

Fixture Dimensions:



ORDERING INFORMATION

Example: BU1865.00.4R24M.30.WD.US. Accessories / Power Supplies ordered separately.

BU1865.00.4R24M	.		.	WD.US
Model No.		CCT		
BU1865.00.4R24M		30 - 3000K (standard)		WD.US
		27 - 2700K (on request)		
		40 - 4000K (on request)		

Job Name/Date:

Fixture Type Designation:

SUGGESTED POWER SUPPLIES

500mA

Part Number	Description	Input/Output	# of Fixtures
PPLT00497	Phase Dim (120V Only)	120VAC to 500mA, 12W, Class 2	1-3
PPLT00465-P	0-10V Dimming to 1.0%	120-277VAC to 500mA 20W, Class 2	1-5
PPLT00561-P	0-10V Dimming to 0.1%	120-277VAC to 500mA, 100W, Class 2	1-8

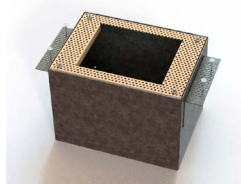
Suggested Lutron Compatible Drivers

Part Number	Option	Lutron SKU	Dim Range	Description	Input/Output	# of Fixtures
PPLT00259	L3DAE / L3DA3W	L3DA	100%-1%	Hi-Lume™ 1% EcoSystem™ or 1% 3-Wire LED Driver	120-277VAC, 10W	2-2
PPLT00195	L3DAE / L3DA3W	L3DA	100%-1%	Hi-Lume™ 1% EcoSystem™ or 1% 3-Wire LED Driver	120-277VAC, 19W	3-4
PPLT00180	L3DAE / L3DA3W	L3DA	100%-1%	Hi-Lume™ 1% EcoSystem™ or 1% 3-Wire LED Driver	120-277VAC, 27W	6-6

For other power supply options consult factory.

ACCESSORIES

Installation



BR1865 - —
Back Box
Include one of the below options:
LT - IC Rated / JA8 Rated
LT-C - Chicago Plenum

REPLACEMENT BULBS

Example: MBGB2-L150-30.UL.US

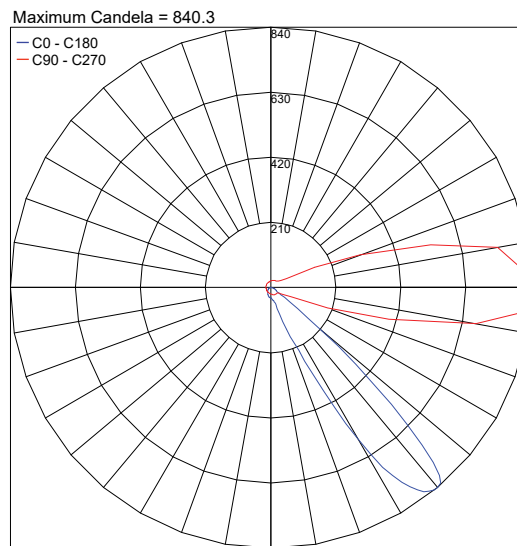
Model No.

MBGB2-L150-27.UL.US - Replacement Lamps - 2700K

MBGB2-L150-30.UL.US - Replacement Lamps - 3000K

PHOTOMETRIC DATA

Note: Photometric data is 3000K



PHOTOMETRIC FILENAME : GENIUS BASIC SLOPE BU1865.00 500MA 3K.IES

Job Name/Date:

Fixture Type Designation: