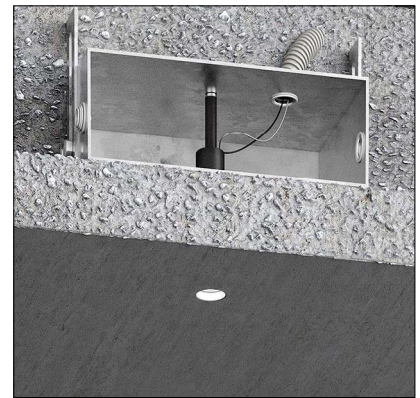


# GENIUS CONCRETE

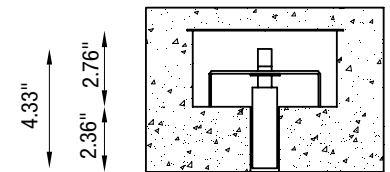
Genius Concrete is an indoor recessed downlight designed for exposed concrete surfaces to be installed during the concrete casting phase. It maintains all the performances of the Genius, but has a simplified lamp body which functions as formwork, with the electrical part removable from the light hole, thanks to a new patent which allows the LED light source to be pulled out and replaced. When installed, the only visible aperture is 0.91" with no need for an inspection hatch, and it can be installed with a minimum concrete cover of 0.47".



## TECHNICAL DATA

<b>Wattage / Input</b>	6W (500mA)
<b>Power Supply</b>	Remote, not included. See page 2.
<b>Construction</b>	Body: Aluminum
<b>CCT</b>	3000K (2700K, 4000K on request, consult factory)
<b>CRI</b>	>90
<b>Delivered Lumens</b>	442 lm (3000K)
<b>Efficacy</b>	73.6 lm/W (3000K)
<b>Optics</b>	22°
<b>Finishes</b>	Box for concrete casting: Zinc White Internal: Black
<b>Fixture Dimensions</b>	4.33" l x 2.76" h
<b>Aperture</b>	Ø0.91"
<b>Fixture Weight</b>	0.88 lbs
<b>LED Source</b>	1 COB Professional LED
<b>IP Rating</b>	IP40

Fixture Dimensions:



## ORDERING INFORMATION

Example: BU1075.BL4R22M30WD.US. Power Supplies ordered separately.

BU1075.	BL	4R22M		WD.US
<b>Model No.</b>	<b>Finish</b>	<b>Optic</b>	<b>CCT</b>	
BU1075.	BL - Black	4R22M - 22°	30 - 3000K (standard) 27 - 2700K (on request) 40 - 4000K (on request)	WD.US

Job Name/Date:

Fixture Type Designation:

## SUGGESTED POWER SUPPLIES

500mA

Part Number	Description	Input/Output	Fixtures
<a href="#">PPLT00466-P</a>	0-10V Dimming to 1.0%	120-277VAC to 500mA, 10W, Class 2	1-1
<a href="#">PPLT00497</a>	Phase Dim (120V Only)	120VAC to 500mA, 12W, Class 2	1-1
<a href="#">PPLT00465-P</a>	0-10V Dimming to 1.0%	120-277VAC to 500mA 20W, Class 2	1-3
<a href="#">PPLT00308-P</a>	0-10V Dimming to 0.1%	120-277VAC to 500mA, 30W, Class 2	1-4
<a href="#">PPLT00480-P</a>	0-10V Dimming to 1.0%	120-277VAC to 500mA, 30W, Class 2	1-4

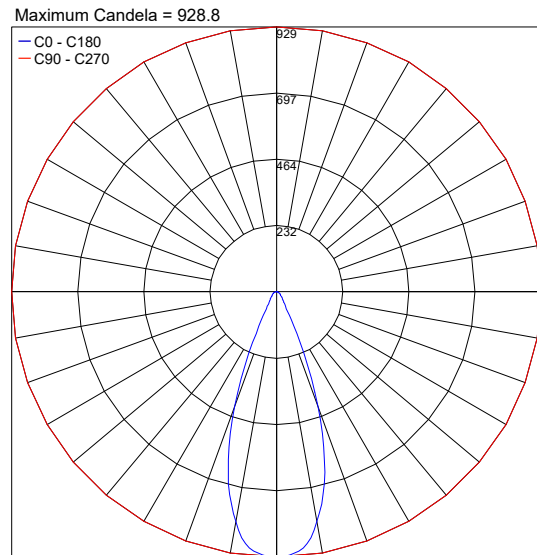
## Suggested Lutron Compatible Drivers

Part Number	Option	Lutron SKU	Dim Range	Description	Input/Output	Fixtures
<a href="#">PPLT00259</a>	L3DAE / L3DA3W	L3DA	100%-1%	Hi-Lume™ 1% EcoSystem™ or 1% 3-Wire LED Driver	120-277VAC, 10W	1-1
<a href="#">PPLT00195</a>	L3DAE / L3DA3W	L3DA	100%-1%	Hi-Lume™ 1% EcoSystem™ or 1% 3-Wire LED Driver	120-277VAC, 19W	2-3
<a href="#">PPLT00180</a>	L3DAE / L3DA3W	L3DA	100%-1%	Hi-Lume™ 1% EcoSystem™ / 1% 3-Wire LED Driver	120-277VAC, 27W	3-4

For other power supply options consult factory.

## PHOTOMETRIC DATA

Note: All photometry is 3000K



PHOTOMETRIC FILENAME : GENIUS CONCRETE BU1075.AC 6W 500MA 3K.IES

Job Name/Date:

Fixture Type Designation: