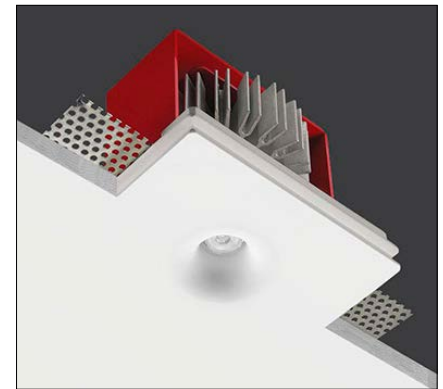


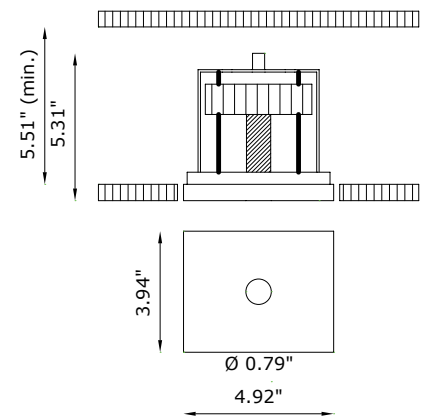
Genius Curve is a small and powerful recessed LED downlight with an aperture less than 1" in diameter. Easy access to LED module via a unique spring loaded mechanism. JA8-2016 Certified and can be used in IC, Chicago Plenum, or concrete pour ceilings.



TECHNICAL DATA

Wattage / Input	8.5W (700mA)
Power Supply	Remote, not included. See page 2.
Construction	Body: AirCoral® Frame: Steel Aluminum Heat Sink
CCT	3000K (2700K, 4000K on request)
CRI	>90
Delivered Lumens	606 lm (3000K)
Efficacy	71.2 lm/W
Optics	40°
Finishes	Unfinished
Cut-Out Dimensions	5.31" x 4.33"
Fixture Dimensions	4.92" x 3.94" x 5.31" h
Aperture	Ø0.79"
Fixture Weight	1.76 lbs
LED Source	1 COB LED Removable Cartridge
IP Rating	IP20

Ceiling Cut-Out: 5.31" x 4.33"
Fixture Dimensions:



The body is made of Aircoral® a unique patented composite material that actually purifies the air. It can be calculated how many cubic feet each fixture will purify. See website for Aircoral® calculator.

Additionally, Aircoral® is:

- Antibacterial.
- Antifungal.
- Scratch-resistant.
- Dust-resistant.
- Suitable for painting.
- LEED recognized material.

ORDERING INFORMATION

Example: BU1891.AC.US. Accessories / Power Supplies ordered separately.

BU1891	.AC.US
Model No.	
BU1891 (3000K standard) (2700K, 4000K on request)	AirCoral®

Job Name/Date:

REPLACEMENT BULBS

Example: PPLL00492.US.

Model No.
PPLL00528.US - Replacement Lamps - 2700K
PPLL00492.US - Replacement Lamps - 3000K
PPLT00567.US - Replacement Lamps - 3500K

Fixture Type Designation:

SUGGESTED POWER SUPPLIES

700mA (Not JA8 Compatible)

Part Number	Description	Input/Output	# of Fixtures
PPLT00498	Phase Dim (120V only)	120VAC to 700mA, 12W	1-1

JA8 Compatible (Also for General Use)

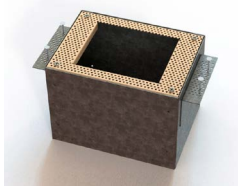
Part Number	Description	Input/Output	# of Fixtures
PPLT00466-P	0-10V Dimming to 1.0%	120-277VAC to 700mA, 10W	1-1
PPLT00465-P	0-10V Dimming to 1.0%	120-277VAC to 700mA, 20W	1-2
PPLT00308-P	0-10V Dimming to 0.1%	120-277VAC to 700mA, 30W	1-3
PPLT00309-P	0-10V Dimming to 0.1%	120-277VAC to 700mA, 50W	1-4
PPLT00467-P	0-10V Dimming to 1.0%	120-277VAC to 700mA, 50W	1-4

Suggested Lutron Compatible (Not JA8 Compatible)

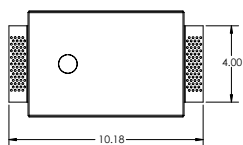
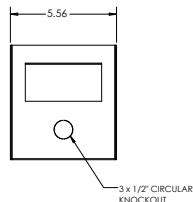
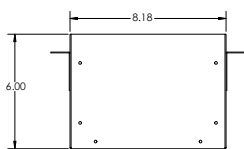
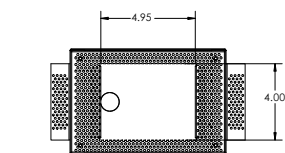
Part Number	Option	Lutron SKU	Dim Range	Description	Input/Output	# of Fixtures
PPLT00515	L3DAE / L3DA3W	L3DA	100%-1%	Hi-lume™ 1% EcoSystem™ / 1% 3-Wire LED Driver	120-277VAC to 700mA, 14W	1-1
PPLT00517	L3DAE / L3DA3W	L3DA	100%-1%	Hi-lume™ 1% EcoSystem™ / 1% 3-Wire LED Driver	120-277VAC to 700mA, 27W	2-3
PPLT00181	L3DAE / L3DA3W	L3DA	100%-1%	Hi-lume™ 1% EcoSystem™ / 1% 3-Wire LED Driver	120-277VAC to 700mA, 38W	3-4

For other power supply options consult factory.

ACCESSORIES - Installation

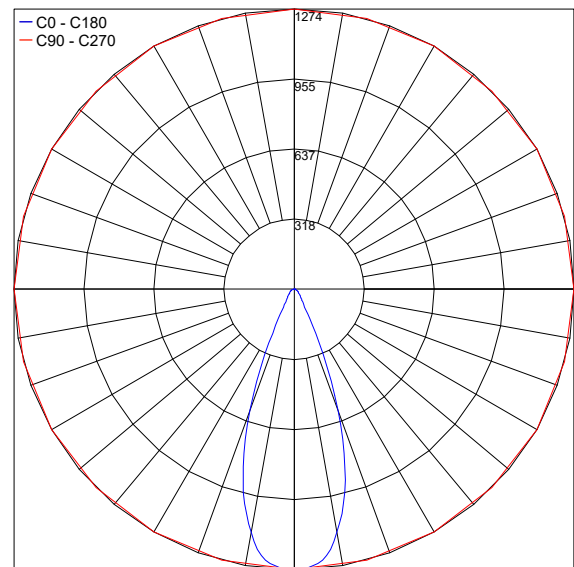


BR1855 -
Back Box
Include one of the below options:
LT - IC Rated / JA8 Rated
LT-C - Chicago Plenum



PHOTOMETRIC DATA

Maximum Candela = 1274



Job Name/Date:

Fixture Type Designation: