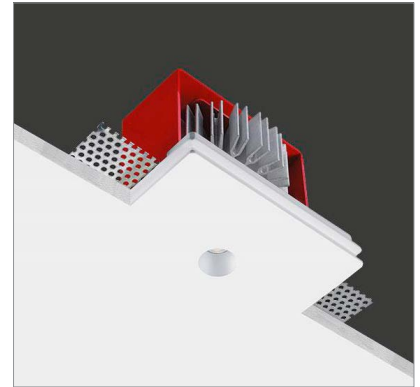


# GENIUS DIM TO WARM

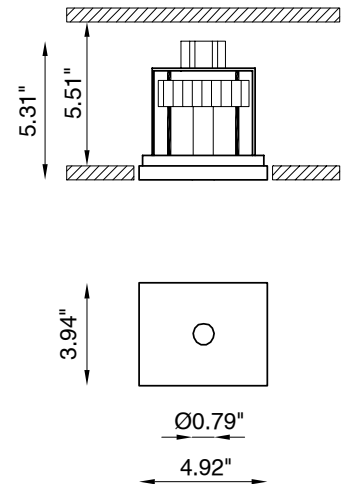
Genius Dim to Warm is a small and powerful recessed LED downlight with an aperture less than 1" in diameter which allows both light intensity and color temperature, dimmable from 1800K to 3000K, to be controlled. Easy access to LED module via a unique spring loaded mechanism. Can be used in IC, Chicago Plenum, or concrete pour ceilings.



## TECHNICAL DATA

<b>Wattage / Input</b>	6W (350mA)
<b>Power Supply</b>	Remote, not included. See page 2.
<b>Construction</b>	Body: AirCoral® Frame: Steel Aluminum Heat Sink
<b>CCT</b>	1800K - 3000K
<b>CRI</b>	CRI>95
<b>LED Lumens</b>	380 lm (3000K)
<b>LED Efficacy</b>	63 lm/W (3000K)
<b>Optics</b>	40° Wide Beam
<b>Finishes</b>	Unfinished
<b>Cut-Out Dimensions</b>	5.31" x 4.33"
<b>Fixture Dimensions</b>	4.92" x 3.94" x 5.31" h
<b>Aperture</b>	Ø0.79"
<b>Fixture Weight</b>	1.76 lbs
<b>LED Source</b>	Single 4 LED Module
<b>IP Rating</b>	IP20

Ceiling Cut-Out: 5.31" x 4.33"  
Fixture Dimensions:



The body is made of AirCoral® a unique patented composite material that actually purifies the air. It can be calculated how many cubic feet each fixture will purify. See website for AirCoral® calculator.

Additionally, AirCoral® is:

- Antibacterial.
- Antifungal.
- Scratch-resistant.
- Dust-resistant.
- Suitable for painting.
- LEED recognized material.

## ORDERING INFORMATION

Example: BU1875.AC.7R40M98WD.US. Accessories / Power Supplies ordered separately.

BU1875	AC	7R40M98WD.US
<b>Model No.</b>		
BU1875	AC - AirCoral®	7R40M98WD.US

Job Name/Date:

Fixture Type Designation:

## SUGGESTED POWER SUPPLIES

350mA

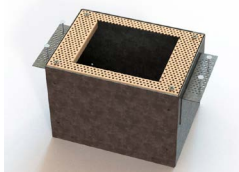
Part Number	Description	Input/Output	# of Fixtures
<a href="#">PPLT00468</a>	Phase Dim (120V only)	120VAC to 350mA, 14W, Class 2	1-2
<a href="#">PPLT00465-P</a>	0-10V Dimming to 1.0%	120-277VAC to 350mA, 20W, Class 2	1-2
<a href="#">PPLT00263</a>	Leading / Trailing-Edge Dimming to 10% (120V only)	120-277VAC to 350mA, 32W, Class 2	2-2
<a href="#">PPLT00309-P</a>	0-10V Dimming to 0.1%	120-277VAC to 350mA, 50W, Class 2	1-2
<a href="#">PPLT00538-P</a>	0-10V Dimming to 0.1%	120-277VAC to 350mA, 100W, Class 2	1-12

## Suggested Lutron Compatible Drivers

Part Number	Option	Lutron SKU	Dim Range	Description	Input/Output	Fixtures
<a href="#">PPLT00252</a>	LTEA2W	LTEA	100%-1%	Hi-Lume™ 1% 2-Wire LED Driver (120V forward phase only)	120VAC, 7W	1-1
<a href="#">PPLT00247</a>	L3DAE / L3DA3W	L3DA	100%-1%	Hi-Lume™ 1% EcoSystem™ or 1% 3-Wire LED Driver	120-277VAC, 7W	1-1
<a href="#">PPLT00516</a>	L3DAE / L3DA3W	L3DA	100%-1%	Hi-Lume™ 1% EcoSystem™ / 1% 3-Wire LED Driver	120-277VAC, 13W	1-2
<a href="#">PPLT00271</a>	LTEA2W	LTEA	100%-1%	Hi-Lume™ 1% 2-Wire LED Driver (120V forward phase only)	120VAC, 13W	1-2
<a href="#">PPLT00179</a>	L3DAE / L3DA3W	L3DA	100%-1%	Hi-Lume™ 1% EcoSystem™ or 1% 3-Wire LED Driver	120-277VAC, 19W	2-2
<a href="#">PPLT00220</a>	LTEA2W	LTEA	100%-1%	Hi-Lume™ 1% 2-Wire LED Driver (120V forward phase only)	120VAC, 19W	2-2

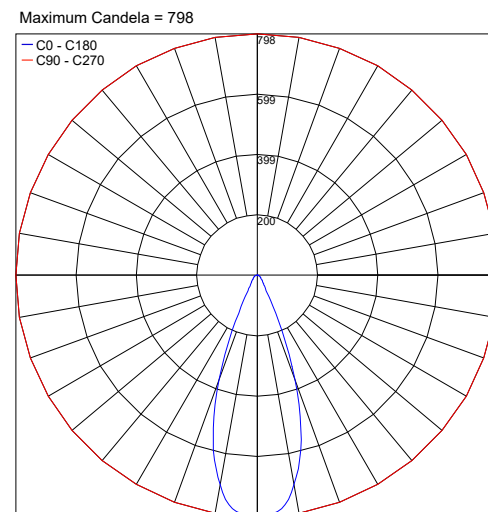
For other power supply options consult factory.

## ACCESSORIES Installation



**BR1855 -** \_\_\_  
Back Box  
Include one of the below options:  
**LT -** IC Rated  
**LT-C -** Chicago Plenum

## PHOTOMETRIC DATA



Job Name/Date:

Fixture Type Designation: