

# GENIUS DIM TO WARM



## DIMMING OF WHITE COLOR AND POWER WITH ONE SINGLE DRIVER.

Genius Dim to Warm is a totally recessed luminaire, with body made in AirCoral®, ideal for indoor ceiling-mounted installations, both on drywall and bricks. Without changing any of the features of the original Genius, the LED technology used here allows both light intensity and color temperature control, dimmable from 1800K to 3000K, to be controlled. A product with CRI 95, which guarantees all digital technology has to offer, while continuing to give the emotions of halogen. The electrical part can be removed through the light hole, thanks to a push-pull mechanism making it easy to pull the LED light source out and replace it. The only visible aperture is the 0.9" (23 mm) outlet, with no need for any inspection hatch, nor for invasive maintenance operations.



79 Trenton Avenue  
Frenchtown, NJ 08825

www.designplan.com

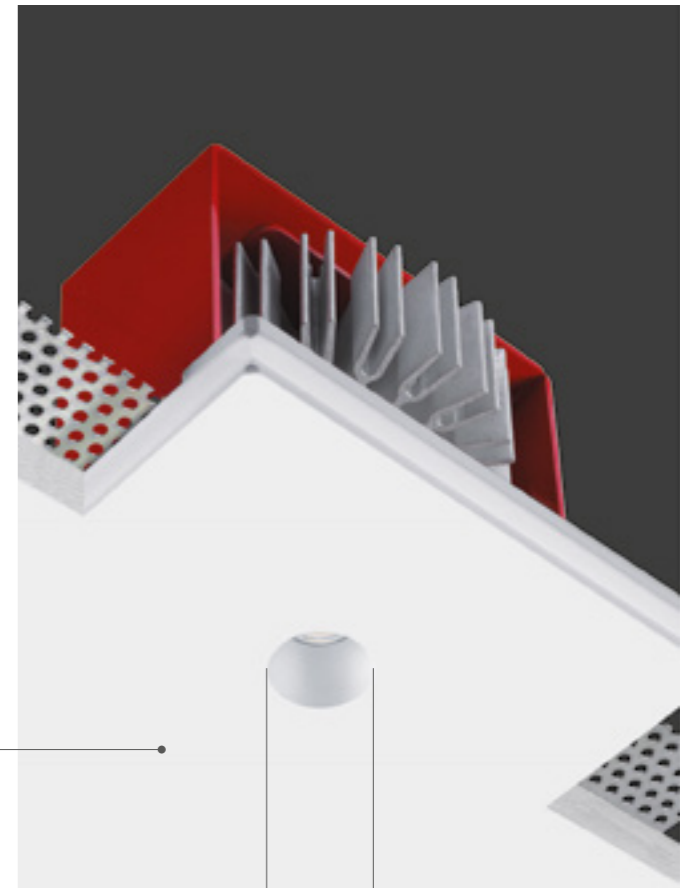
Tel: (908) 996-7710  
Fax: (908) 996-7042

## DIMMERABLE DIM TO WARM DA 1800K A 3000K

DIMMABLE DIM TO WARM  
FROM 1800K TO 3000K



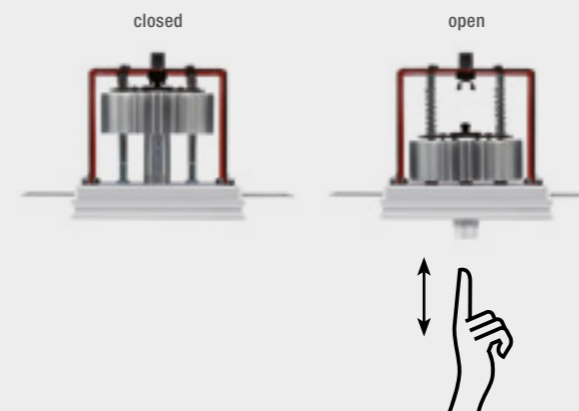
maximum control of light  
intensity and color temperature  
manageable at the same time  
with a single driver



0.9"

the only visible part is the emission  
hole of 0.9" (23 mm)

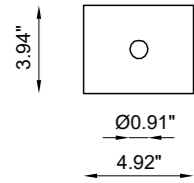
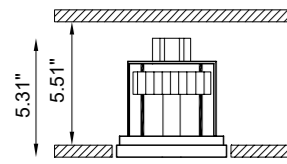
### PUSH & PULL TECHNOLOGY



No need for an inspection hatch. The electrical part can be extracted straight from the light hole just with a simple manual gesture, thanks to the push-pull mechanism which makes it easy to extract and replace the LED source for maintenance purposes.

# Genius Dim To Warm

Recessed



## CODE COMPOSITION

1875.AC 7 R 40 E 98 WD

## TECHNICAL FEATURES

Code	1875.AC 7 R 40 E 98 WD
Type	Downlight 90°
Material	AC: AirCoral®
Absorption capacity*	14.96 ft²
Weight	1.76 lbs
Mounting	Ceiling recessed
IP rating	IP20
Control gear	Remote constant current electronic driver** (not included)
Cut out for plasterboard	5.31" x 4.33"
Lamp type	LED 350mA Vf: 17 VDC
Lamp wattage	1 x 6W
Luminous efficacy	600 lm (from 1800K up to 3000K)
Light distribution	Wide beam 40°
Fitting	-
Light color	Dimming range 1800/3000K
Light hole	Ø 0.91"
Voltage connection	By driver (optional)
CRI	95

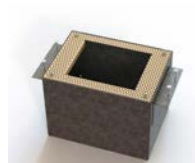


3000K

2500K

1800K

## ACCESSORIES



**BR1855 -** \_\_\_  
Back Box  
Include one of the below options:  
LT - IC Rated  
LT-C - Chicago Plenum  
LT-PC - Concrete Pour  
LT-BC - Brick Ceiling

\* The absorption capacity per ft² calculated by the American organization TCNA (Tile Council of North America) is measured for an average room of 8.86' in height and therefore expressed in m²