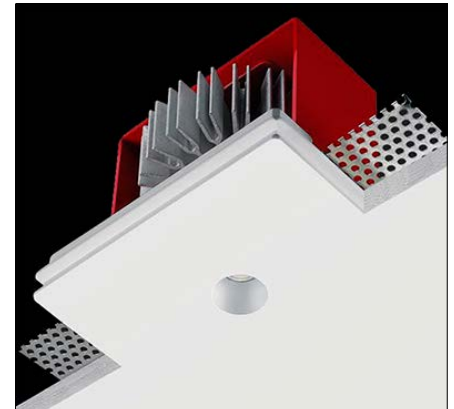


GENIUS ROUND IP65

Genius is a small and powerful recessed LED downlight with an aperture less than 1" in diameter. Easy access to LED module via a unique spring loaded mechanism. The body is made of Coral Water Out® a unique patented composite material that is waterproof. JA8-2016 Certified.



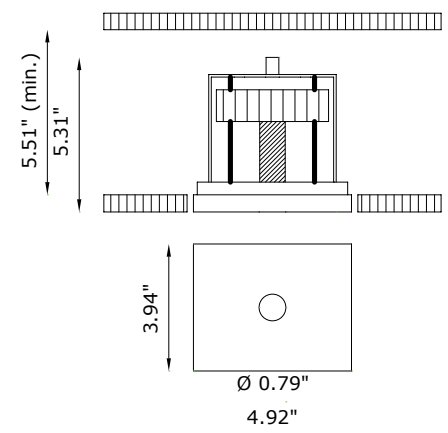
TECHNICAL DATA

Wattage / Input	6W (500mA)
Power Supply	Remote, not included. See page 2.
Construction	Body: Coral Water Out® Frame: Steel Aluminum Heat Sink
CCT	3000K (2700K, 4000K on request)
BUG Rating	B1-U0-G0 (3000K)
CRI	>90
Delivered Lumens	606 lm (3000K)
Efficacy	71.2 lm/W (3000K)
Optics	24°, 40°
Finishes	Unfinished
Cut-Out Dimensions	5.31" x 4.33"
Fixture Dimensions	4.92" x 3.94" x 5.28" h
Aperture	Ø0.79"
Fixture Weight	1.76 lbs
LED Source	1 Removalable COB LED Cartridge
IP Rating	IP65
JA8	Certified

The body is made of Coral Water Out® is a new material which has proved highly resistant to water penetration. This water-repellent effect remains unchanged over time as it is a superficial finish but rather a structural feature of the material itself.

This material is ideally suited to IP65/IP44-rated recessed lighting, suitable for use in external environments, and ideal for light systems in spas, wellness clubs, massage centres, swimming-pools, bathrooms, and all other locations where water and humidity restrict the choice of technical lighting.

Ceiling Cut-Out: 5.31" x 4.33"
Fixture Dimensions:



ORDERING INFORMATION

Example: BU1951.CW.424M.27.WD.US. Accessories / Power Supplies ordered separately.

BU1951	CW			WD.US
Model No.	Material	Optics	CCT	
BU1951	Coral Water Out®	424M - 24° 440M - 40°	30 - 3000K (standard) 27 - 2700K (on request) 40 - 4000K (on request)	WD.US

Job Name/Date:

Fixture Type Designation:

SUGGESTED POWER SUPPLIES

JA8 Compatible (Also for General Use)

Part Number	Description	Input/Output	# of Fixtures
PPLT00466-P	0-10V Dimming to 1.0%	120-277VAC to 500mA, 10W, Class 2, DAMP	1 - 1

SUGGESTED POWER SUPPLIES

500mA (Not JA8 Compatible)

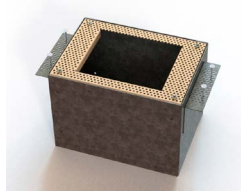
Part Number	Description	Input/Output	# of Fixtures
PPLT00497	Phase Dim (120V only)	120VAC to 500mA, 12W, Class 2, DAMP	1 - 1
PPLT00465-P	0-10V Dimming to 1.0%	120-277VAC to 500mA, 20W, Class 2, DAMP	1 - 3
PPLT00262	Leading / Trailing Edge Dimming to 10% (120V only)	120-277VAC to 500mA, 32W, Class 2	2 - 3
PPLT00561-P	0-10V Dimming to 0.1%	120-277VAC to 500mA, 100W, Class 2	1 - 4

Suggested Lutron Compatible (Not JA8 Compatible)

Part Number	Option	Lutron SKU	Dim Range	Description	Input/Output	# of Fixtures
PPLT00259	L3DAE / L3DA3W	L3DA	100%-1%	Hi-lume™ 1% EcoSystem™ / 1% 3-Wire LED Driver	120-277VAC to 500mA, 10W	1 - 1
PPLT00676	PEQOE	PEQ0	100%-0.1%	Hi-Lume Premier 0.1% EcoSystem™ F2B LED Driver	120-277VAC to 500mA, 20W	1 - 3
PPLT00180	L3DAE / L3DA3W	L3DA	100%-1%	Hi-lume™ 1% EcoSystem™ / 1% 3-Wire LED Driver	120-277VAC to 500mA, 27W	3 - 4

For other power supply options consult factory.

ACCESSORIES - Installation



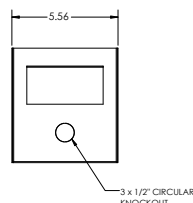
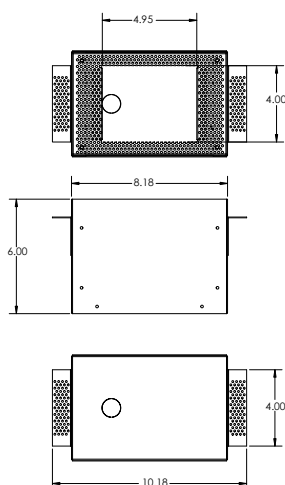
BR1855 - ____

Back Box

Include one of the below options:

LT - IC Rated / JA8 Rated

LT-C - Chicago Plenum



REPLACEMENT BULBS

Example: **PPLL00492.US**.

Model No.

PPLL00528.US - Replacement Lamps - 2700K, 40°

PPLL00492.US - Replacement Lamps - 3000K, 40°

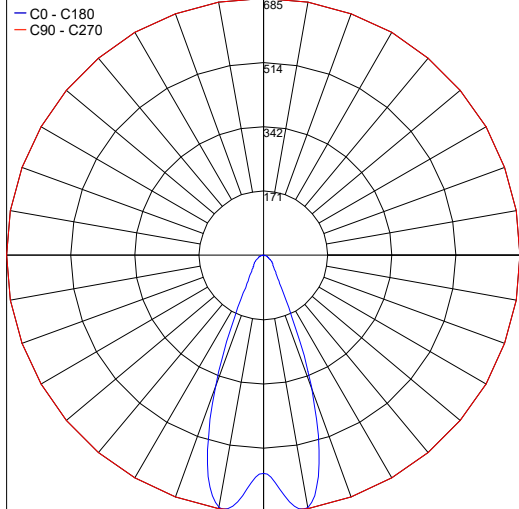
PPLT00567.US - Replacement Lamps - 3500K, 40°

Job Name/Date:

Fixture Type Designation:

PHOTOMETRIC DATA

Maximum Candela = 685



PHOTOMETRIC FILENAME : GENIUS ROUND IP65 8.5W 40° - BU1951.IES

Job Name/Date:

Fixture Type Designation: