

Genius Square is a small and powerful recessed LED downlight with an aperture less than 1" in diameter. Easy access to LED module via a unique spring loaded mechanism. JA8-2016 Certified and can be used in IC, Chicago Plenum ceilings. For concrete pour ceilings, see Genius Concrete in the Outdoor catalog.



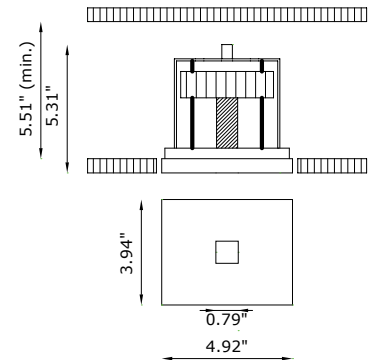
JA8-2016



TECHNICAL DATA

Wattage / Input	8.5W (700mA)
Power Supply	Remote, not included. See page 2.
Construction	Body: AirCoral® Frame: Steel Aluminum Heat Sink
CCT	3000K (2700K on request)
CRI	>90
Delivered Lumens	606 lm (3000K)
Efficacy	71.2 lm/W
Optics	40°
Finishes	Unfinished
Cut-Out Dimensions	5.31" x 4.33"
Fixture Dimensions	4.92" x 3.94" x 5.31" h
Aperture	0.79" x 0.79"
Fixture Weight	1.76 lbs
LED Source	1 COB LED Removable Cartridge
IP Rating	IP20
JA8	Certified

Ceiling Cut-Out: 5.31" x 4.33"
Fixture Dimensions:



The body is made of AirCoral® a unique patented composite material that actually purifies the air. It can be calculated how many cubic feet each fixture will purify. See website for AirCoral® calculator.

Additionally, AirCoral® is:
 Antibacterial.
 Antifungal.
 Scratch-resistant.
 Dust-resistant.
 Suitable for painting.
 LEED recognized material.

ORDERING INFORMATION

Example: BU1853.AC.US. Accessories / Power Supplies ordered separately.

BU1853.	AC.US
Model No. BU1853 (3000K standard) (2700K on request)	AC.US - AirCoral®

Job Name/Date:

Fixture Type Designation:

SUGGESTED POWER SUPPLIES

JA8 Compatible (Also for General Use)

Part Number	Description	Input/Output	# of Fixtures
PPLT00466-P	0-10V Dimming to 1.0%	120-277VAC to 700mA, 10W	1 - 1

SUGGESTED POWER SUPPLIES

700mA (Not JA8 Compatible)

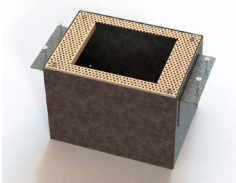
Part Number	Description	Input/Output	# of Fixtures
PPLT00498	Phase Dim (120V only)	120VAC to 700mA, 12W	1 - 1
PPLT00465-P	0-10V Dimming to 1.0%	120-277VAC to 700mA, 20W	1 - 2
PPLT00308-P	0-10V Dimming to 0.1%	120-277VAC to 700mA, 30W	1 - 3
PPLT00309-P	0-10V Dimming to 0.1%	120-277VAC to 700mA, 50W	1 - 4
PPLT00467-P	0-10V Dimming to 1.0%	120-277VAC to 700mA, 50W	1 - 4

Suggested Lutron Compatible (Not JA8 Compatible)

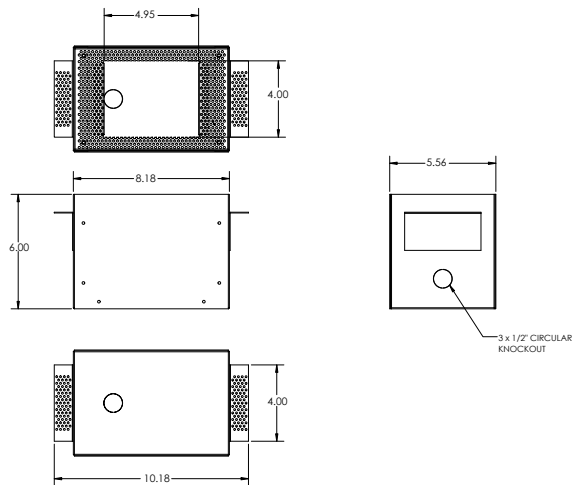
Part Number	Option	Lutron SKU	Dim Range	Description	Input/Output	# of Fixtures
PPLT00515	L3DAE / L3DA3W	L3DA	100%-1%	Hi-lume™ 1% EcoSystem™ / 1% 3-Wire LED Driver	120-277VAC to 700mA, 14W	1 - 1
PPLT00517	L3DAE / L3DA3W	L3DA	100%-1%	Hi-lume™ 1% EcoSystem™ / 1% 3-Wire LED Driver	120-277VAC to 700mA, 27W	2 - 3
PPLT00181	L3DAE / L3DA3W	L3DA	100%-1%	Hi-lume™ 1% EcoSystem™ / 1% 3-Wire LED Driver	120-277VAC to 700mA, 38W	3 - 4

For other power supply options consult factory.

ACCESSORIES - Installation



BR1855 -
Back Box
Include one of the below options:
LT - IC Rated / JA8 Rated
LT-C - Chicago Plenum



REPLACEMENT BULBS

Example: PPLL00492.US.

Model No.

- PPLL00528.US - Replacement Lamps - 2700K
- PPLL00492.US - Replacement Lamps - 3000K
- PPLT00567.US - Replacement Lamps - 3500K

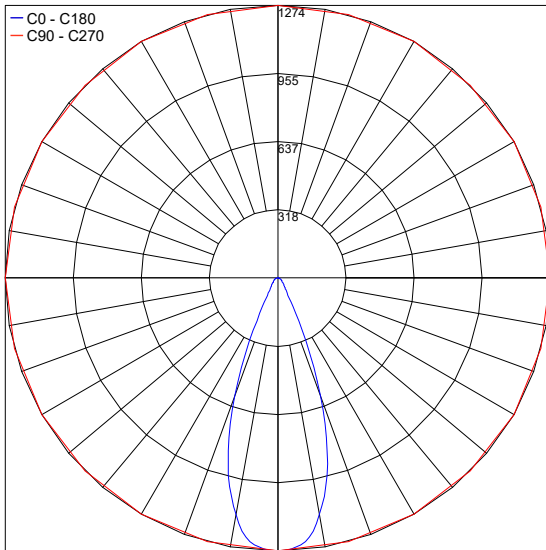
Job Name/Date:

Fixture Type Designation:

PHOTOMETRIC DATA

Note: All photometry is 3000K

Maximum Candela = 1274



Job Name/Date:

Fixture Type Designation: