

INVISILED



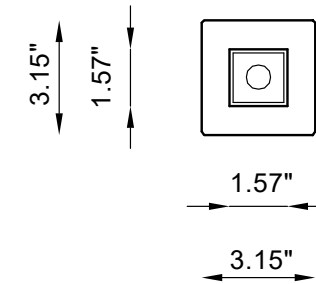
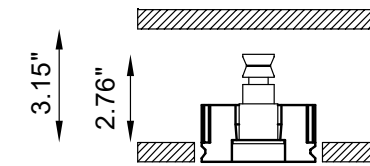
Pure and delicate light suddenly springs from a spot on the wall, and it spreads out homogeneously in the space, enfolding the whole room, undisturbed. Invisiled, a totally disappearing recessed luminaire made of AirCoral®, installable on plasterboard or brick walls and ceilings, is studied for projects where light has the main role. Invisiled fits into any environment, giving concreteness to the designer's inspirations, and discreetly integrating itself into spaces.




79 Trenton Avenue
Frenchtown, NJ 08825

www.designplan.com

Tel: (908) 996-7710
Fax: (908) 996-7042



TECHNICAL FEATURES

Code	BU6348.Z.AC.US
Type	Downlight 90° Wall recessed 90° 
Material	AC: AirCoral®
Absorption capacity*	11.30 ft ²
Weight	0.66 lbs
Mounting	Wall and ceiling recessed
IP rating	IP40
Control gear	Constant current electronic driver (not included)
Cut out for plasterboard	3.54" x 3.54"
Lamp type	LED - 500mA 
Lamp wattage	2W
Luminous efficacy	75 lm/W - 3000K
Light distribution	Narrow beam 14°
Light color	White 3000K White 2700K (on request)
Light hole	1.57" x 1.57"
CRI	>90

* The absorption capacity per ft² calculated by the American organization TCNA (Tile Council of North America) is measured for an average room of 8.86' in height and therefore expressed in ft²

