

The adjustable
hexahedron.

kuboid

kuboid

[LND]

designplan™ 

Defining, enhancing, customizing and transforming external architecture.

Outdoor light that integrates with the architecture, makes the spaces livable, gives them volume and shape. When necessary it creates hypnotic or relaxing atmospheres, made possible by an excellent technique.

Intelligent, reasoned, programmed lighting. Nothing is left to chance, in continuous dialogue with the natural light. Perfect lighting designs, thanks to the possibility of providing a management control that makes even the simplest of products optimal.

[LND] designplan[™] 

Perfect form elevated to the highest power.

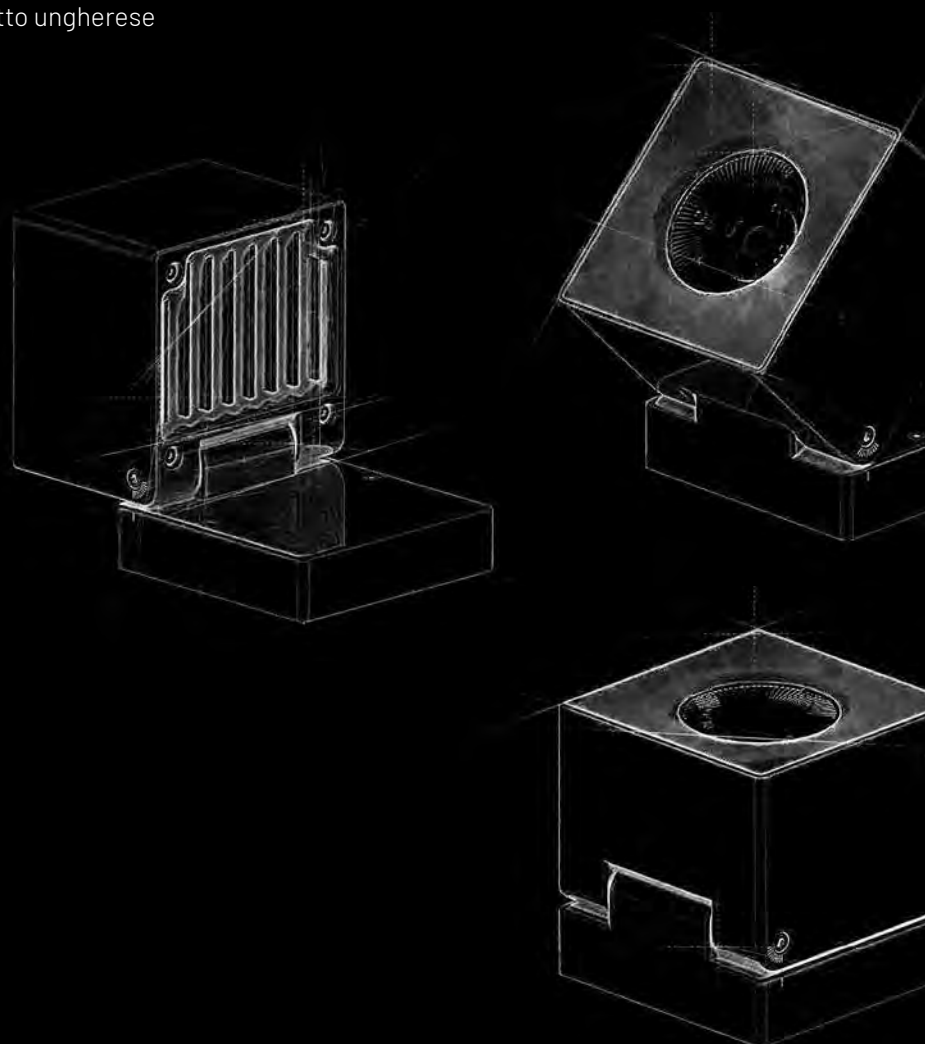
Regular polyhedron, with six sides and twelve identical corners.

The cube, anchored at the sides by twelve right angles, is a figure which represents stability, a powerful and essential solidification. If the circle is unstoppable dynamism, the cube is its majesty, a form which is always the same; and what both have in common is the sense of perfection.



The Cube is a wonderful example of the rigor of nature, of the great richness of natural laws: it is a perfect example of the possibilities of the human mind to test its own scientific rigor and to dominate itself.

Ernő Rubik
designer e architetto ungherese

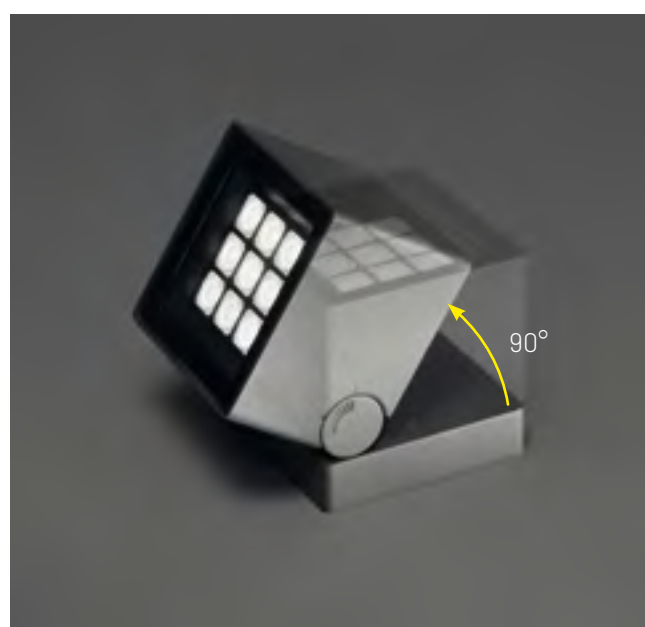


+
plus

Maximum adjustability

Kuboid is synonymous with extreme versatility, a quality generated by the possibility of rotating the light fitting $\pm 120^\circ$ on the horizontal axis and 90° on the vertical one.

A geometric selection which is never the same, thanks to the special joint in pressure die-cast aluminum which makes Kuboid the perfect choice in any outdoor context.



Versatile mounting

Kuboid is a technological light fitting in concept and creation.

In fact, in the small, medium and large versions, it offers four possible applications: ceiling, wall, floor and ground installation via steel stakes.

Outdoor living takes on a new quality, thanks to the infinite light of Kuboid, which can be adjusted and directed according to individual technical-lighting needs.



Ceiling application via a ceiling fixture plate.



Wall application thanks to the special wall fixture plate.



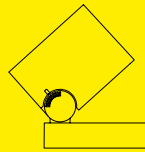
Floor application, thanks to the floor fixture plate.



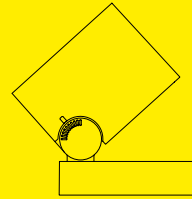
Special steel stake for ground application.

PRODUCT RANGE

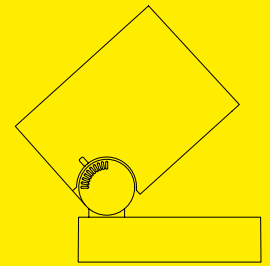
Kuboid can satisfy all project requirements thanks to a range composed of three different sizes:
small (3.54" x 3.54" x 3.54"),
medium (4.72" x 4.72" x 4.72"),
large (6.30" x 6.30" x 6.30").



kuboid 90



kuboid 120



kuboid 160

dimensions

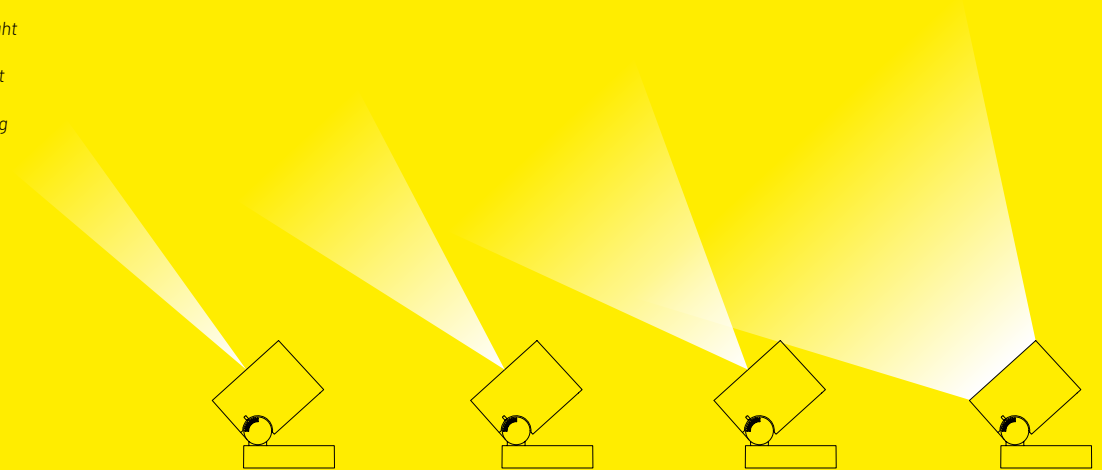
3.54"

4.72"

6.30"

LIGHT BEAM

A versatile and attractive lighting fitting, Kuboid exists with spot, medium and flood light beams and is also available with opal glass for producing diffused light.



spot

medium

flood

diffuse

beam

14°

30°

45°

-

FINISHING



graphite



oxide



white



black

colour

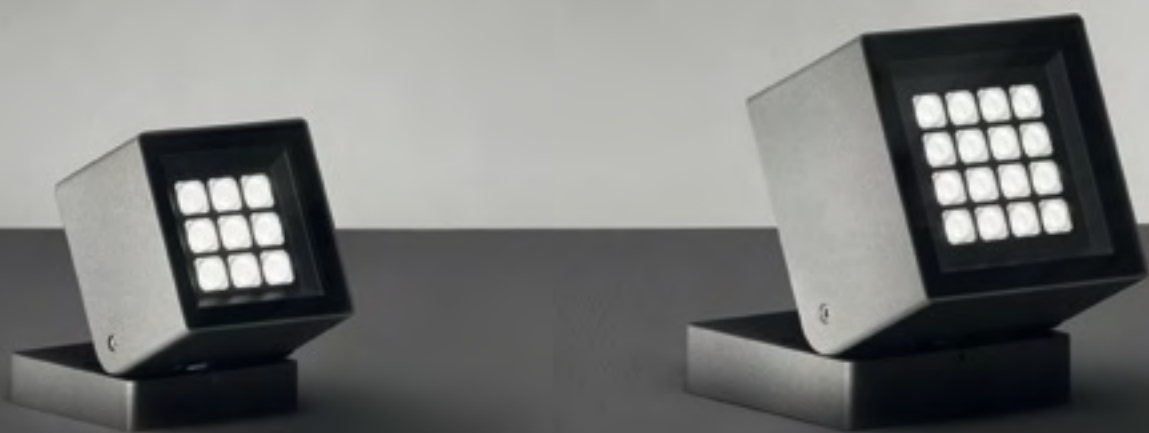


The adjustable hexahedron.

kuboid

design by Landa R&D





kuboid 90

Compact, unique.

In the small version with 3.54" side with 6W power, Kuboid is versatile and can fit into any space. The light fitting is available with diffused emission with opal glass and spot, medium and flood light beams, with silk-screen printed glass, Kuboid is a perfect cube composed of a dissipating, adjustable body in pressure die-cast aluminum. The look can be personalized in 4 different powder finishes, graphite, oxide, white and black, with remote electronic power supply.

The product, adjustable $\pm 120^\circ$ on the horizontal axis and 90° on the vertical one, can be installed on the wall, ceiling and floor, or on the ground with installation using a special stake.





kuboid 90

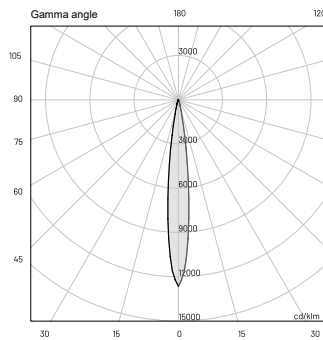
| 6W

SPOT • MEDIUM • FLOOD

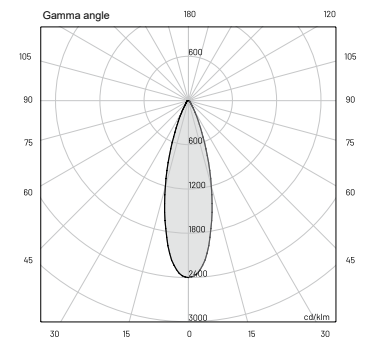


TECHNICAL SPECIFICATIONS

	SPOT	MEDIUM
Source lamp	LED 6W	LED 6W
Total wattage	8W	8W
Voltage	24VDC, 50-60Hz	24VDC, 50-60Hz
Control	On/Off	On/Off
Light color	3000K • other colors on request	3000K • other colors on request
Delivered lumens *Source lumens	643 lm (680 lm*)	590 lm (680 lm*)
Luminous efficacy	80.4 lm/W	73.8 lm/W
McADAM steps	3	3
Beam	14°	30°
CRI	> 90	> 90
Lifetime	L70 > 50,000 h Ta 40°C	L70 > 50,000 h Ta 40°C
IP rating	IP67	IP67
IK rating	IK08	IK08



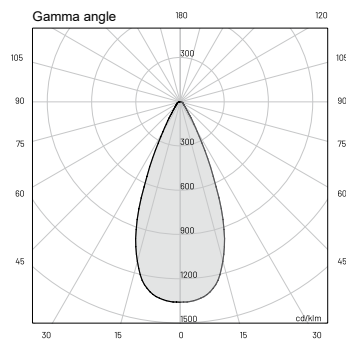
E (FC)		
H (ft)	fc (3000K)	Ø (ft)
3.28'	798.9	0.72'
6.56'	199.7	1.44'
9.84'	88.7	2.20'
13.12'	49.9	2.92'
16.40'	32.0	3.64'



E (FC)		
H (ft)	fc (3000K)	Ø (ft)
3.28'	151.6	1.77'
6.56'	37.9	3.54'
9.84'	16.8	5.28'
13.12'	9.5	7.05'
16.40'	6.0	8.83'

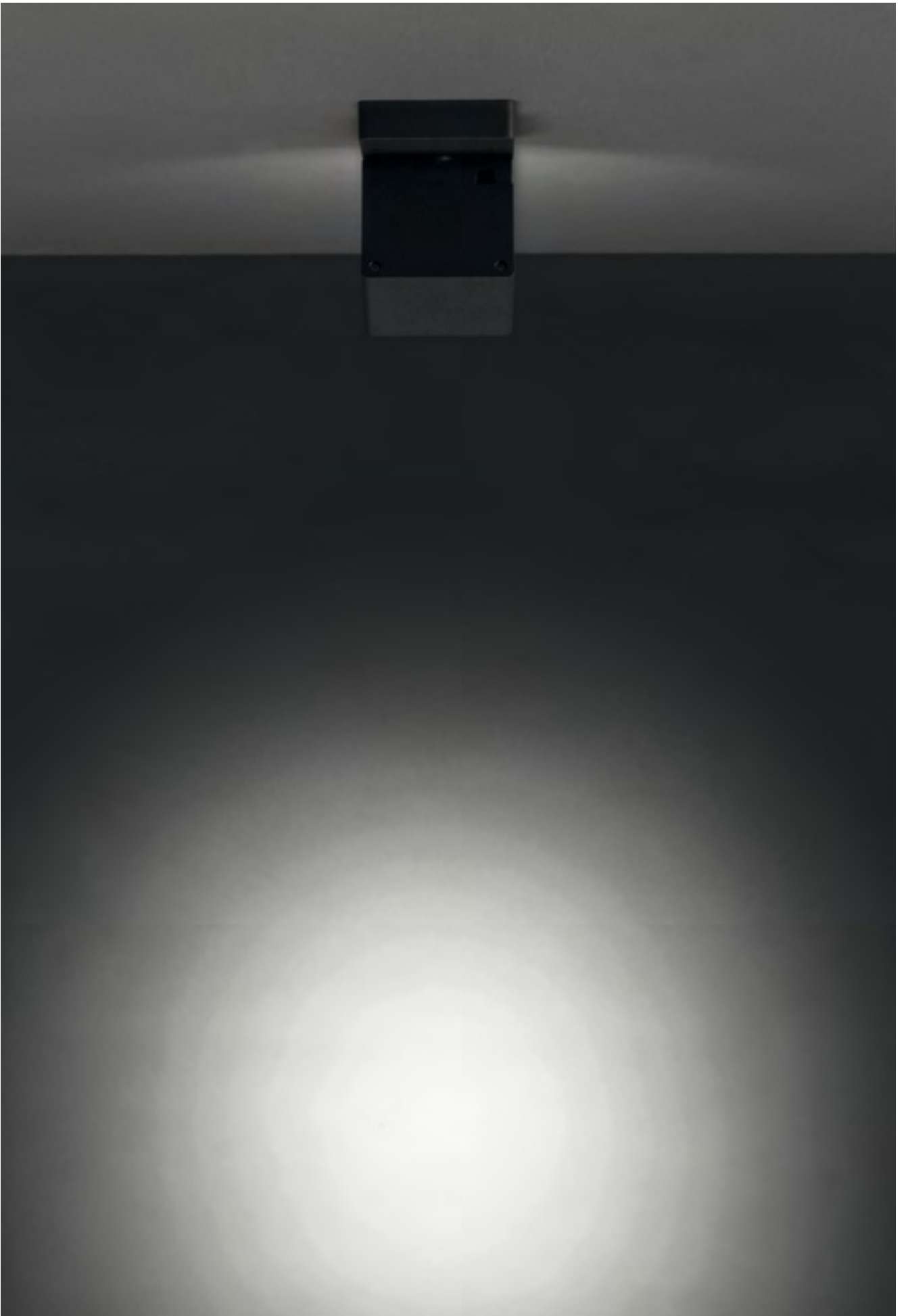
TECHNICAL SPECIFICATIONS

	FLOOD
Source lamp	LED 6W
Total wattage	8W
Voltage	24VDC, 50-60Hz
Control	On/Off
Light color	3000K • other colors on request
Delivered lumens *Source lumens	576 lm (680 lm*)
Luminous efficacy	72 lm/W
McADAM steps	3
Beam	45°
CRI	> 90
Life time	L70 > 50,000 h Ta 40°C
IP rating	IP67
IK rating	IK08



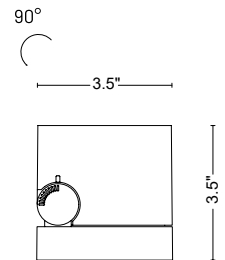
E (FC)

H (ft)	fc (3000 K)	Ø (ft)
3.28'	85.7	2.69'
6.56'	21.5	5.38'
9.84'	9.6	8.07'
13.12'	5.4	10.76'
16.40'	3.4	13.45'



MATERIALS

<i>Body</i>	Die-cast aluminum EN47100
<i>Diffuser</i>	Serigraphed transparent glass
<i>Finishing</i>	Polyester powder paint



ORDER CODE

KB 5 0 PRO _ H B B Z _

<i>Finishing</i>	L	Graphite	●
	V	Oxide	●
	U	White	○
	G	Black	●
<i>Beam</i>	S	Spot	
	M	Medium	
	F	Flood	

Example KB 5 0 PRO S H B B Z L

AVAILABLE ACCESSORIES

<i>Code</i>	<i>Description</i>
<u>00AKB50</u>	<u>Steel fixing kit - spike</u>



kuboid 90

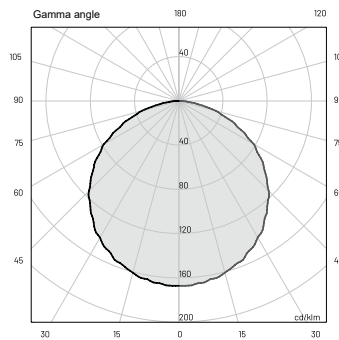
6W

DIFFUSE



TECHNICAL SPECIFICATIONS

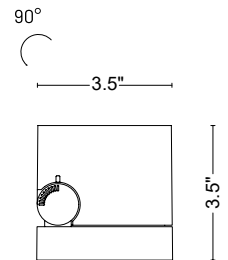
	DIFFUSE
Source lamp	LED 6W
Total wattage	8W
Voltage	24VDC, 50-60Hz
Control	On/Off
Light color	3000K • other colors on request
Delivered lumens *Source lumens	353 lm (720 lm*)
Luminous efficacy	44.13 lm/W
McADAM steps	3
Beam	Diffuse
CRI	> 90
Lifetime	L70 > 50,000 h Ta 40°C
IP rating	IP67
IK rating	IK08



E (FC)		
H (ft)	fc (3000 K)	Ø (ft)
3.28'	11.1	10.27
6.56'	2.8	20.54'
9.84'	1.2	30.81'
13.12'	0.7	41.08'
16.40'	0.5	51.31'

MATERIALS

Body	Die-cast aluminum EN47100
Diffuser	Serigraphed opal glass
Finishing	Polyester powder paint



ORDER CODE

KB 5 1 PRO D H B B Z _

Finishing

L	Graphite	●
V	Oxide	●
U	White	○
G	Black	●

Example

KB 5 1 PRO D H B B Z L

AVAILABLE ACCESSORIES

Code	Description
00AKB50	Steel fixing kit - spike







kuboid 120

4.7" x 4.7" x 4.7" of perfection and power.

Kuboid 120 is solid, precise and indispensable. A projector available with spot, medium and flood light beams with silk-screen printed glass and diffused beam fitted with opal glass, installable outdoors on the wall and ceiling or on the floor, and on the ground using the special stake. Characterized by a cubic body in pressure die-cast aluminum EN47100, the light fitting is adjustable $\pm 120^\circ$ on the horizontal axis and 90° on the vertical one, for perfect lighting in any type of space. Resistant even in extreme conditions, Kuboid 120 is perfect for outdoors, and is available with graphite, oxide, white and black finish.





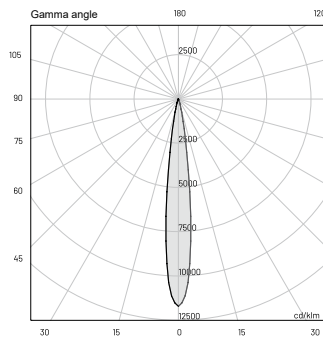
kuboid 120 | 13.5W

SPOT • MEDIUM • FLOOD

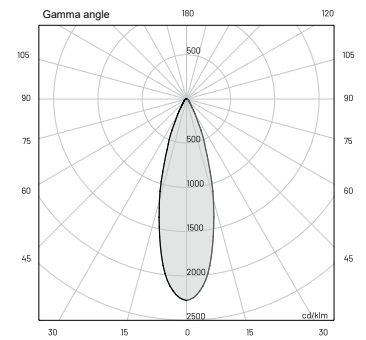


TECHNICAL SPECIFICATIONS

	SPOT	MEDIUM
Source lamp	LED 13.5W	LED 13.5W
Total wattage	16W	16W
Voltage	24VDC, 50-60Hz	24VDC, 50-60Hz
Control	On/Off • dimmable on request	On/Off • dimmable on request
Light color	3000K • other colors on request	3000K • other colors on request
Delivered lumens *Source lumens	1423 lm (1530 lm*)	1332 lm (1530 lm*)
Luminous efficacy	89 lm/W	83.25 lm/W
McADAM steps	3	3
Beam	14°	30°
CRI	> 90	> 90
Lifetime	L70 > 50,000 h Ta 40°C	L70 > 50,000 h Ta 40°C
IP rating	IP67	IP67
IK rating	IK08	IK08



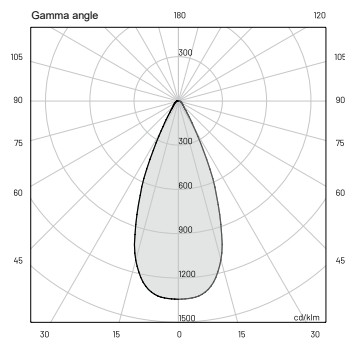
E (FC)		
H (ft)	fc (3000K)	Ø (ft)
3.28'	1663.8	0.75'
6.56'	415.9	1.51'
9.84'	184.9	2.26'
13.12'	104.0	3.02'
16.40'	66.5	3.77'



E (FC)		
H (ft)	fc (3000K)	Ø (ft)
3.28'	323.5	1.80'
6.56'	80.9	3.61'
9.84'	36.0	5.45'
13.12'	20.3	7.25'
16.40'	12.9	9.06'

TECHNICAL SPECIFICATIONS

	FLOOD
Source lamp	LED 13.5W
Total wattage	16W
Voltage	24VDC, 50-60Hz
Control	On/Off • dimmable on request
Light color	3000K • other colors on request
Delivered lumens *Source lumens	1307 lm (1530 lm*)
Luminous efficacy	81.7 lm/W
McADAM steps	3
Beam	45°
CRI	> 90
Life time	L70 > 50,000 h Ta 40°C
IP rating	IP67
IK rating	IK08



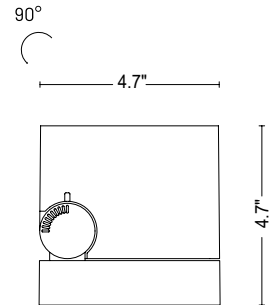
E (FC)

H (ft)	fc (3000 K)	Ø (ft)
3.28'	191.0	2.69'
6.56'	47.8	5.38'
9.84'	21.2	8.07'
13.12'	11.9	10.76'
16.40'	7.6	13.48'



MATERIALS

Body	Die-cast aluminum EN47100
Diffuser	Serigraphed transparent glass
Finishing	Polyester powder paint



ORDER CODE

KB 6 0 PRO _ H B B Z _

Finishing	L	Graphite	●
	V	Oxide	●
	U	White	○
	G	Black	●
Beam	S	Spot	
	M	Medium	
	F	Flood	

Example KB 6 0 PRO S H B B Z L

AVAILABLE ACCESSORIES

Code	Description
<u>00AKB60-80</u>	<u>Steel fixing kit - spike</u>



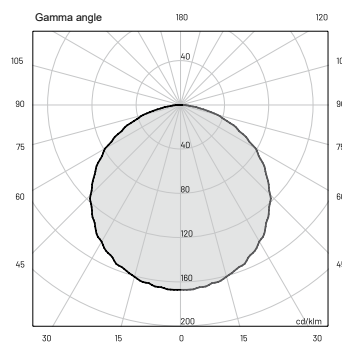
kuboid 120 | 14.5W

DIFFUSE



TECHNICAL SPECIFICATIONS

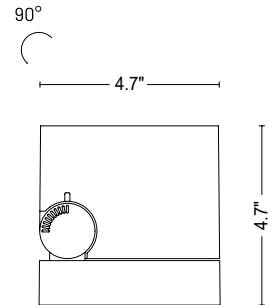
	DIFFUSE
Source lamp	LED 14.5W
Total wattage	17.5W
Voltage	24VDC, 50-60Hz
Control	On/Off • dimmable on request
Light color	3000K • other colors on request
Delivered lumens *Source lumens	882 lm (1800 lm*)
Luminous efficacy	50.4 lm/W
McADAM steps	3
Beam	Diffuse
CRI	> 90
Lifetime	L70 > 50,000 h Ta 40°C
IP rating	IP67
IK rating	IK08



E (FC)		
H (ft)	f _c (3000 K)	Ø (ft)
3.28'	28.0	10.27
6.56'	7.0	20.54'
9.84'	3.1	30.81'
13.12'	1.8	50.92'
16.40'	1.1	51.31'

MATERIALS

<i>Body</i>	<u>Die-cast aluminum EN47100</u>
<i>Diffuser</i>	<u>Serigraphed opal glass</u>
<i>Finishing</i>	<u>Polyester powder paint</u>



ORDER CODE

KB 6 1 PRO D H B B Z _

Finishing

<u>L</u>	<u>Graphite</u>	●
<u>V</u>	<u>Oxide</u>	●
<u>U</u>	<u>White</u>	○
<u>G</u>	<u>Black</u>	●

Example

KB 6 1 PRO D H B B Z L

AVAILABLE ACCESSORIES

<i>Code</i>	<i>Description</i>
<u>00AKB60-80</u>	<u>Steel fixing kit - spike</u>





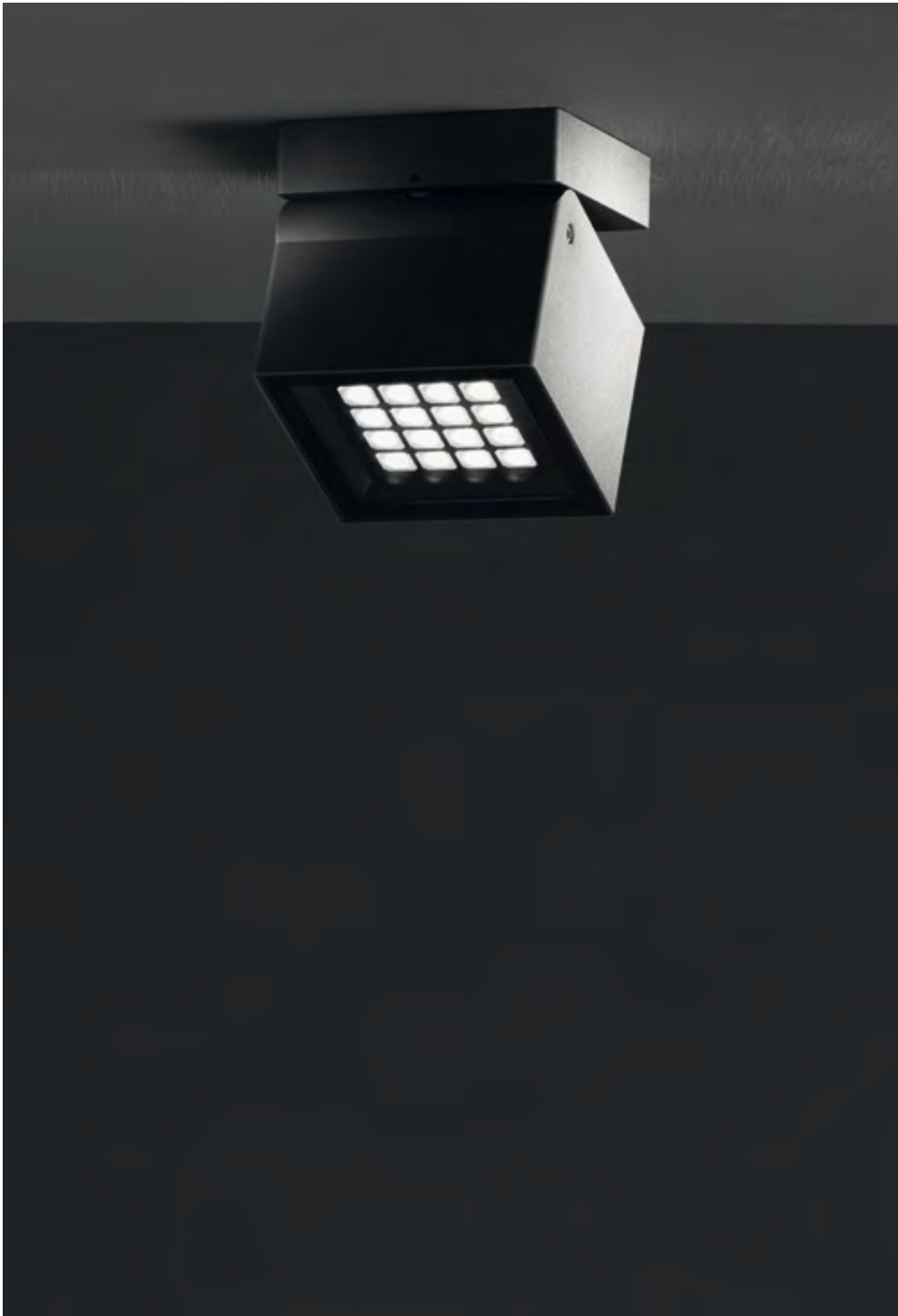


kuboid 160

The large version in the Kuboid projector range, with 6.3" side.

A light fitting with 24/25W power and available with spot, medium and flood light beams and in the version with emission of diffused lighting. The degree of protection IP67 makes Kuboid 160 the perfect choice for lighting facades, porches and entrances. The cubic body, thanks to a mechanically cutting-edge joint, can be adjusted $\pm 120^\circ$ on the horizontal axis and 90° on the vertical one. Versatile and precise, it can be installed on the wall, ceiling and floor and on the ground using the dedicated stake. The finish which covers the pressure die-cast aluminum EN47100 body is available in graphite, oxide, white and black.





kuboid 160

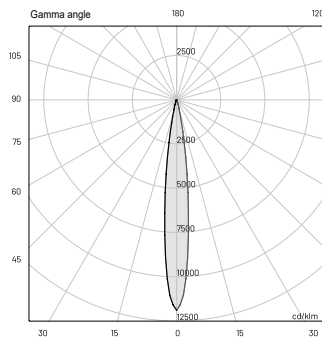
| 24W

SPOT • MEDIUM • FLOOD



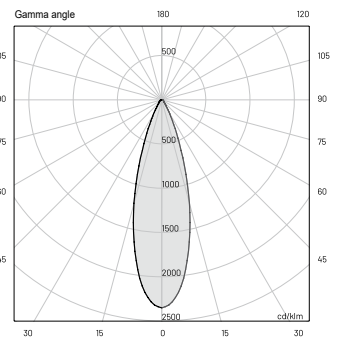
TECHNICAL SPECIFICATIONS

	SPOT	MEDIUM
Source lamp	LED 24W	LED 24W
Total wattage	27W	27W
Voltage	24VDC, 50-60Hz	24VDC, 50-60Hz
Control	On/Off • dimmable on request	On/Off • dimmable on request
Light color	3000K • other colors on request	3000K • other colors on request
Delivered lumens *Source lumens	2506 lm (2700 lm*)	2333 lm (2700 lm*)
Luminous efficacy	93 lm/W	87 lm/W
McADAM steps	3	3
Beam	14°	30°
CRI	> 90	> 90
Lifetime	L70 > 50.000 h Ta 40°C	L70 > 50.000 h Ta 40°C
IP rating	IP67	IP67
IK rating	IK08	IK08



E (FC)

H (ft)	fc (3000 K)	Ø (ft)
3.28'	2984.0	0.75'
6.56'	745.1	1.48'
9.84'	331.6	2.23'
13.12'	186.5	2.95'
16.40'	119.4	3.71'

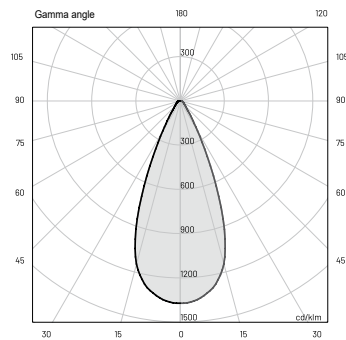


E (FC)

H (ft)	fc (3000 K)	Ø (ft)
3.28'	589.4	1.80'
6.56'	147.3	3.58'
9.84'	65.5	5.38'
13.12'	36.9	7.19'
16.40'	23.6	8.99'

TECHNICAL SPECIFICATIONS

	FLOOD
Source lamp	LED 24W
Total wattage	27W
Voltage	24VDC, 50-60Hz
Control	On/Off • dimmable on request
Light color	3000K • other colors on request
Delivered lumens *Source lumens	2342 lm (2700 lm*)
Luminous efficacy	86.7 lm/W
McADAM steps	3
Beam	45°
CRI	> 90
Lifetime	L70 > 50.000 h Ta 40°C
IP rating	IP67
IK rating	IK08



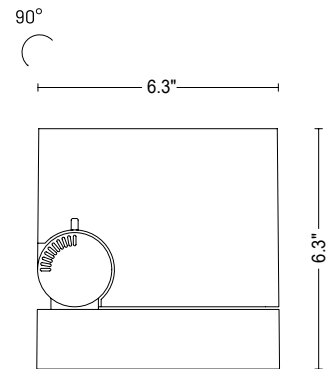
E (FC)

H (ft)	lux (3000 K)	Ø (ft)
3.28'	344.1	2.66'
6.56'	86.0	5.35'
9.84'	38.3	8.01'
13.12'	21.5	10.70'
16.40'	13.7	13.35'



MATERIALS

<i>Body</i>	Die-cast aluminum EN47100
<i>Diffuser</i>	Serigraphed transparent glass
<i>Finishing</i>	Polyester powder paint



ORDER CODE

KB 8 0 PRO _ H B B Z _

<i>Finishing</i>	L	Graphite	●
	V	Oxide	●
	U	White	○
	G	Black	●
<i>Beam</i>	S	Spot	
	M	Medium	
	F	Flood	

Example

KB 8 0 PRO S H B B Z L

AVAILABLE ACCESSORIES

<i>Code</i>	<i>Description</i>
00AKB60-80	Steel fixing kit - spike



kuboid 160

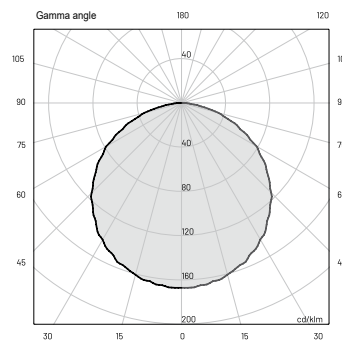
25W

DIFFUSE



TECHNICAL SPECIFICATIONS

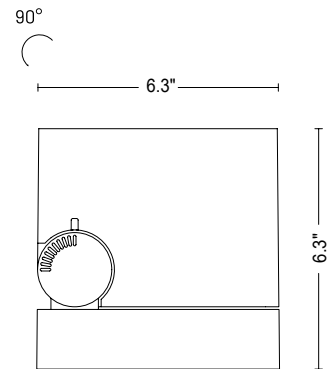
	DIFFUSE
Source lamp	LED 25W
Total wattage	28W
Voltage	24VDC, 50-60Hz
Control	On/Off • dimmable on request
Light color	3000K • other colors on request
Delivered lumens *Source lumens	1480 lm (3020 lm*)
Luminous efficacy	52.9 lm/W
McADAM steps	3
Beam	Diffuse
CRI	> 90
Life time	L70 > 50.000 h Ta 40°C
IP rating	IP67
IK rating	IK08



E (FC)		
H (ft)	fc (3000 K)	Ø (ft)
3.28'	46.9	10.27
6.56'	11.7	20.54'
9.84'	5.2	30.81'
13.12'	3.0	41.08'
16.40'	1.9	51.31'

MATERIALS

Body	Die-cast aluminum EN47100
Diffuser	Serigraphed opal glass
Finishing	Polyester powder paint



ORDER CODE

KB 8 1 PRO D H B B Z _

Finishing

L	Graphite	●
V	Oxide	●
U	White	○
G	Black	●

Example

KB 8 1 PRO D H B B Z L

AVAILABLE ACCESSORIES

Code	Description
00AKB60-80	Steel fixing kit - spike





accessories

code

description

note

KUBOID 90 | PROJECTOR



00AKB50

Steel fixing kit - spike

KUBOID 120 | PROJECTOR



00AKB60-80

Steel fixing kit - spike

KUBOID 160 | PROJECTOR



00AKB60-80

Steel fixing kit - spike

general information

PROTECTION GRADE

IP67

Luminaire dust-tight and sealed against temporary immersion

RESISTANCE TO CRASHES

IK08

Luminaire protected against an impact energy of 5 Joules

INSULATION CLASS

CLASS I

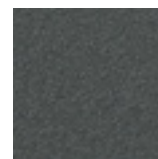
Luminaire with basic insulation. Protection: connection of the accessible metal parts to the earthing protection.

finishes

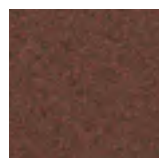
POLYESTER POWDER PAINT



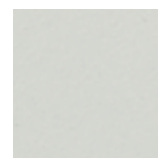
G Black



L Graphite



V Oxide



U White

symbols

SPOT BEAM



MEDIUM BEAM



FLOOD BEAM



DIFFUSE BEAM



LUMINAIRE THAT CAN BE ROTATED ON THE VERTICAL AXIS



LUMINAIRE THAT CAN BE TILTED ON THE HORIZONTAL AXIS

