



INSTRUCTIONS PERTAINING TO RISK OF FIRE OR INJURY TO PERSONS. READ ALL INSTRUCTIONS. IMPORTANT SAFETY INSTRUCTIONS. SAVE THESE INSTRUCTIONS.

DANGER - RISK OF SHOCK - DISCONNECT POWER BEFORE INSTALLATION! Please read all instructions before installation.

- Keep these instructions for future reference.
- Must be installed by a qualified electrician in accordance with national and local standards. Designplan is not responsible for fixtures installed without regard to these standards.
- Unauthorized alterations or tampering of product voids warranty.
- The main power connection must be in accordance with local electrical codes.
- Suitable for OUTDOOR applications.

Electrical Connections:

- LED lights must be **connected in parallel** respecting polarities.
- **CHOOSE POWER SUPPLY ACCORDINGLY.** Please consider the voltage through which fixtures are fed as well as the max power consumption.
- **Connect power only if all the fixtures are connected.**
- The power supplies **MUST** be installed in aerated rooms, far from heat sources. Overworking or lack of air circulation will not permit natural dissipation.
- Use only Class 2 type electronic power supply.
- Never use switches on secondary circuit.

MEDIUM



MAXI



IP66 IK07

ATTENTION: **For In-Grade** - It is the contractor's responsibility to seal the conduit with "Great Stuff" aerosol seal that prevents water and moisture penetration for ultimate protection. Contractor **MUST** use gel-filled wire nuts.

Maintenance

Scheduled maintenance must be carried out once a year on all lighting devices, regardless of appliance class and type of use. It must include the following operations:

- Periodically clean fixtures to remove dirt from gratings and screw heads.
- Check tightness of screws on various parts of the device.
- Check that all cable glands and cables are intact and tight. Check that the glass or plastic lens is intact, and replace it if broken or damaged.
- The internal components such as the ballast, driver, washers and screws must not show clear signs of oxidation or rust. Clear traces of rust and oxidation will indicate the presence of water inside the device.
- In the case of damage, the components must be replaced by original components or spare parts.

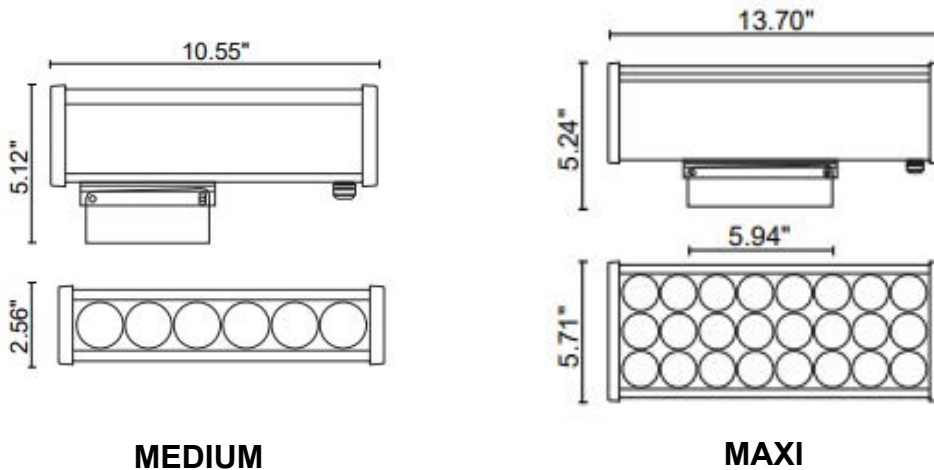
LASER MEDIUM / MAXI

18W, 55W, INTEGRAL 120VAC

designplan®

installation instructions

FIXTURE DIMENSIONS:

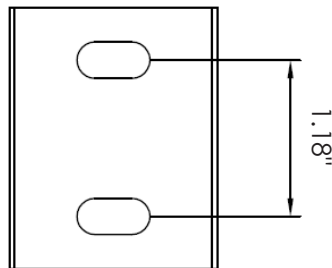


FIXTURE INSTALLATION:

1. Drill holes in the floor using dowels (fischer type) not included in the package. The position of the luminaire must be close to the wall of the building.
2. Tighten 4 screws using the tool included in the package.
3. Making the electrical connection to the line respecting L -N -PE
4. Turn on the luminaire and then making the correct inclination adjustment by unscrewing two rear screws (like picture).
5. When the inclination is correct tighten the screws.

LASER MEDIUM LED

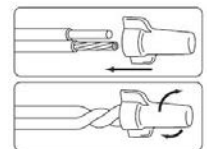
1



2



3



Use gel-filled waterproof wire-nuts for wire connections.

LASER MEDIUM / MAXI

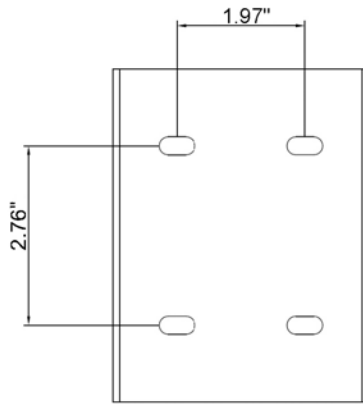
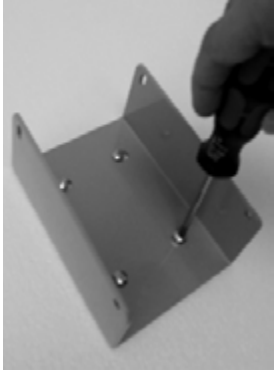
18W, 55W, INTEGRAL 120VAC

designplan®

installation instructions

LASER MAXI LED

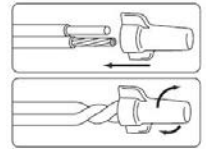
1



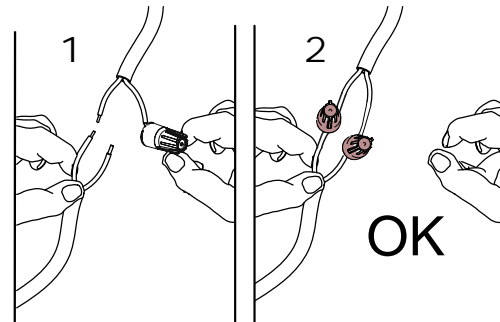
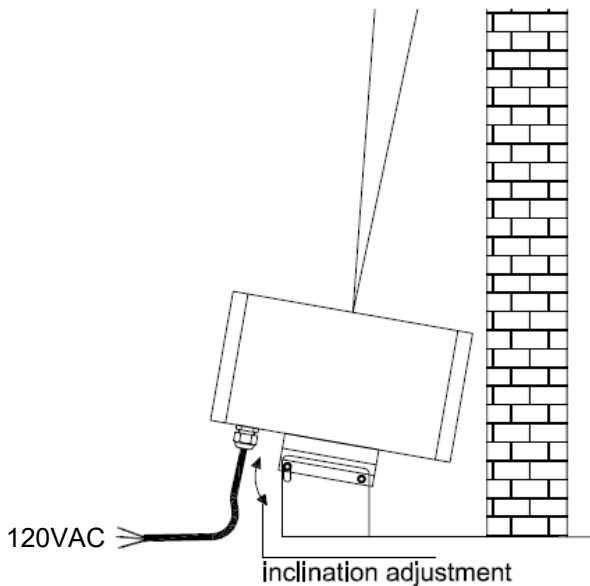
2



3



Use gel-filled waterproof wire-nuts for wire connections.



- It is the contractor's responsibility to caulk around the edges between the fixture and the mounting surface, to satisfy wet label requirements.