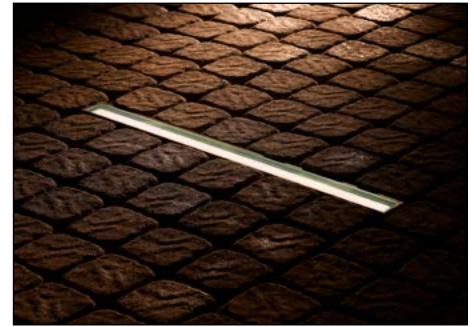


LL1 is an in-grade upright made of extruded aluminum which is offered in 1 ft., 2 ft. or 4 ft. lengths. Driveover rated for 11,000 lbs. Suitable for power washing.

TECHNICAL DATA

| | |
|---------------------------|---|
| Wattage / Input | 9W per foot (500mA - 1 ft, 2 ft, 1000mA - 4 ft) |
| Power Supply | Remote, not included. See page 3. |
| Construction | Body: Extruded Aluminum Lens: 0.5" Low Iron Clear Tempered Glass |
| CCT | 3000K, 4000K, 5000K |
| CRI | >80 |
| Delivered Lumens | Coming Soon |
| Efficacy | Coming Soon |
| Optics | None |
| Finishes | Gray Epoxy Polyester Finish |
| Fixture Dimensions | 1.0', 2.0', 4.0' x 4.13" h |
| LED Source | Samsung 2323 Mid Power LED |
| IP Rating | IP68, IP69 (Tested to EN / IEC 60598-1) |
| Driveover Rated | Up to 11,000 lbs |



MADE IN AMERICA

Fixture Dimensions
1.0', 2.0' or 4.0' l x 4.13" h
See Full Drawings on page 2 and page 3

ORDERING INFORMATION

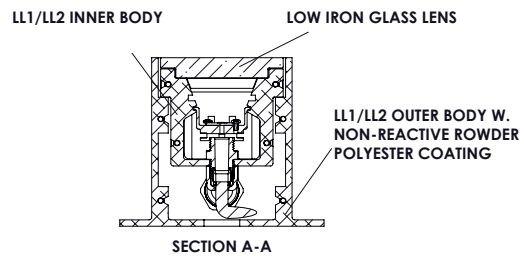
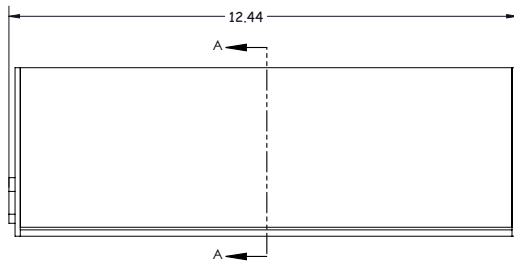
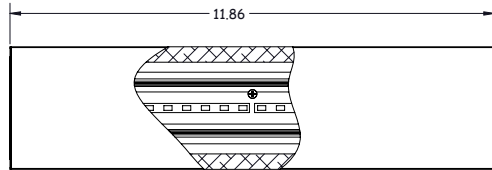
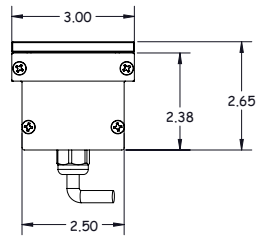
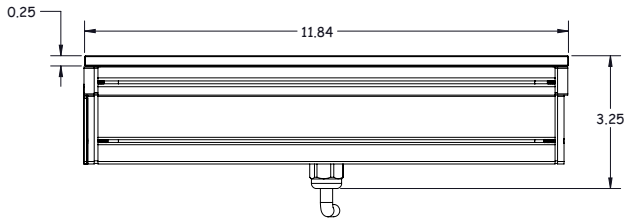
Example: LL1-L-2-40-4-GE-0-X-J-0.

| LL1-L | - | | - | | 4 | - | GE | - | 0 | - | X | - | | - | 0 |
|---------|---|--|--------------------|-----------------|----------|-------------------|---|----------|---|---|---|---|--|---|---|
| Model # | Length | CCT | Body | Finish | Optics | Driver | Lens | Options | | | | | | | |
| LL1-L | 1 - 1' (9W) 2 - 2' (18W) 4 - 4' (36W) | 30 - 3000K 40 - 4000K 50 - 5000K | 4 - Fully Recessed | GE - Gray Epoxy | 0 - None | X - Remote Driver | K - Flash White BTM Clear Top J - Flash White w/ Anti-Skid Pattern | 0 - none | | | | | | | |

Job Name/Date:

Fixture Type Designation:

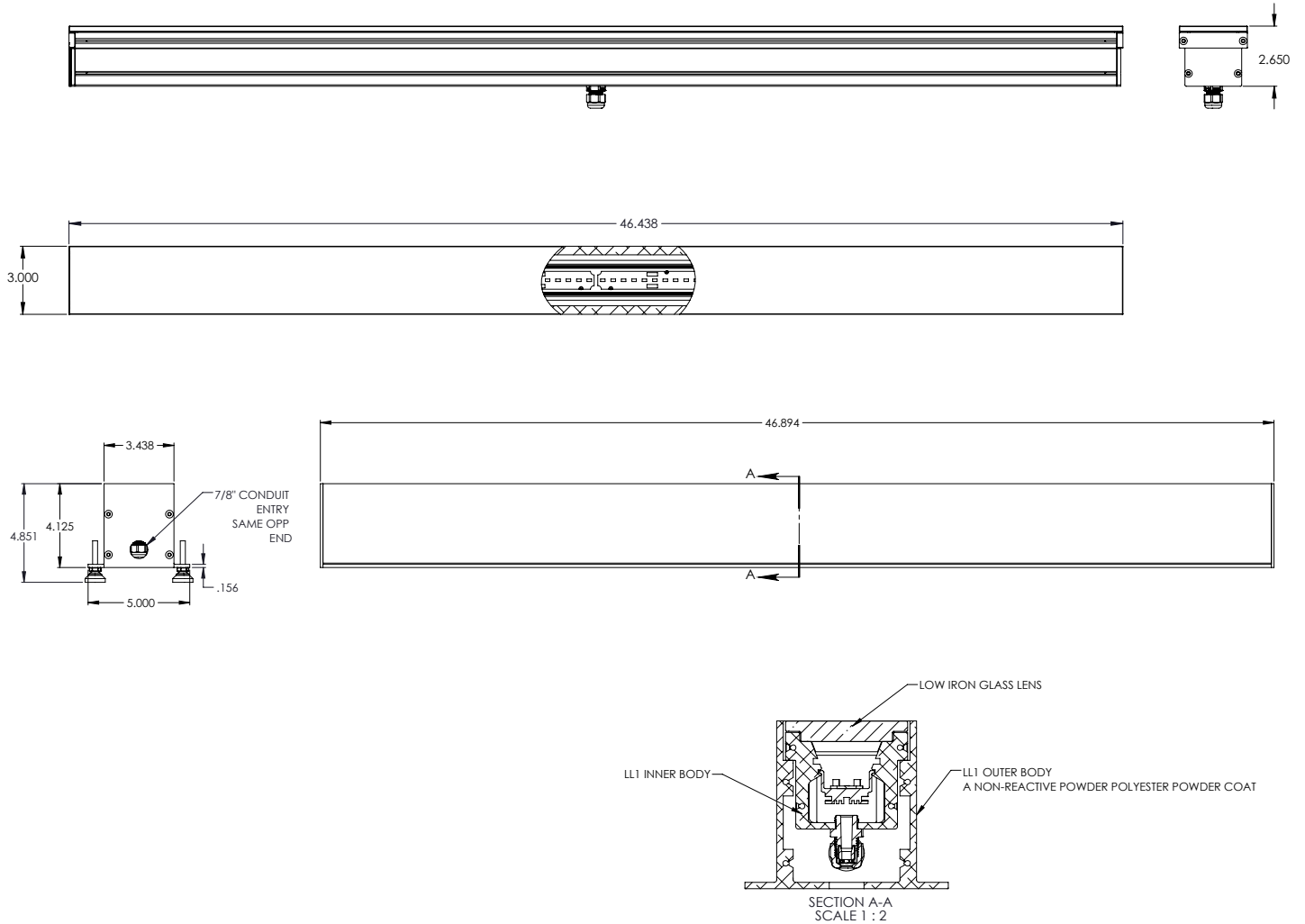
FIXTURE DIMENSIONS



Job Name/Date:

Fixture Type Designation:

FIXTURE DIMENSIONS



ACCESSORIES - Installation



LL301
Leveling Pad
Set of 4

Job Name/Date:

Fixture Type Designation:

SUGGESTED POWER SUPPLIES

500mA - 1 ft. version - 9W

| Part Number | Description | Input/Output | # of Fixtures (1 ft.) |
|-----------------------------|------------------------------------|--|-----------------------|
| PPLT00154 | 0-10V Dimming to 10% | 120-277VAC to 500mA, 12W, Class 2 | 1-1 |
| PPLT00465-P | 0-10V Dimming to 1.0% | 120-277VAC to 500mA, 20W, Class 2, DAMP | 1-2 |
| PPLT00527 | Phase Dim (120V only) | 120VAC to 500mA, 25W, Class 2, IP66 | 1-2 |
| PPLT00309-P | 0-10V Dimming to 0.1% | 120-277VAC to 500mA, 50W, Class 2, DAMP | 1-2 |
| PPLT00538-P | 0-10V Dimming to 0.1% (4 channels) | 120-277VAC to 500mA, 100W, Class 2, DAMP | 1-2 (1-8) |

Suggested Lutron Compatible - 500mA - 1 ft. - 9W version

| Part Number | Option | Lutron SKU | Dim Range | Description | Input/Output | # of Fixtures |
|---------------------------|----------------|------------|-----------|---|-----------------------------------|---------------|
| PPLT00195 | L3DAE / L3DA3W | L3DA | 100%-1% | Hi-Lume™ 1% EcoSystem™ or 1% 3-Wire LED Driver | 120-277VAC to 500mA, 19W, Class 2 | 1-1 |
| PPLT00676 | PEQ0E | PEQ0 | 100%-0.1% | Hi-Lume™ Premier 0.1% EcoSystem™ F2B LED Driver | 120-277VAC to 500mA, 20W, Class 2 | 1-1 |
| PPLT00180 | L3DAE / L3DA3W | L3DA | 100%-1% | Hi-Lume™ 1% EcoSystem™ or 1% 3-Wire LED Driver | 120-277VAC to 500mA, 27W, Class 2 | 2-2 |

SUGGESTED POWER SUPPLIES

500mA - 2 ft. version - 18W

| Part Number | Description | Input/Output | # of Fixtures (2 ft.) |
|-----------------------------|-----------------------|--|-----------------------|
| PPLT00465-P | 0-10V Dimming to 1.0% | 120-277VAC to 500mA, 20W, Class 2, DAMP | 1-1 |
| PPLT00527 | Phase Dim (120V only) | 120VAC to 500mA, 25W, Class 2, IP66 | 1-1 |
| PPLT00309-P | 0-10V Dimming to 0.1% | 120-277VAC to 500mA, 50W, Class 2, DAMP | 1-1 |
| PPLT00538-P | 0-10V Dimming to 0.1% | 120-277VAC to 500mA, 100W, Class 2, DAMP | 1-4 |

Suggested Lutron Compatible - 500mA - 2 ft. - 18W version

| Part Number | Option | Lutron SKU | Dim Range | Description | Input/Output | # of Fixtures |
|---------------------------|----------------|------------|-----------|--|-----------------------------------|---------------|
| PPLT00195 | L3DAE / L3DA3W | L3DA | 100%-1% | Hi-Lume™ 1% EcoSystem™ or 1% 3-Wire LED Driver | 120-277VAC to 500mA, 19W, Class 2 | 1-1 |
| PPLT00180 | L3DAE / L3DA3W | L3DA | 100%-1% | Hi-Lume™ 1% EcoSystem™ or 1% 3-Wire LED Driver | 120-277VAC to 500mA, 27W, Class 2 | 1-1 |

SUGGESTED POWER SUPPLIES

1000mA - 4 ft. version - 36W

| Part Number | Description | Input/Output | # of Fixtures (4 ft.) |
|-----------------------------|-----------------------|--|-----------------------|
| PPLT00309-P | 0-10V Dimming to 0.1% | 120-277VAC to 1000mA, 50W, Class 2, DAMP | 1-1 |
| PPLT00467-P | 0-10V Dimming to 1.0% | 120-277VAC to 1000mA, 50W, Class 2, DAMP | 1-1 |

Suggested Lutron Compatible - 1000mA - 4 ft. - 36W version

| Part Number | Option | Lutron SKU | Dim Range | Description | Input/Output | # of Fixtures |
|---------------------------|----------------|------------|-----------|--|------------------------------------|---------------|
| PPLT00519 | L3DAE / L3DA3W | L3DA | 100%-1% | Hi-Lume™ 1% EcoSystem™ or 1% 3-Wire LED Driver | 120-277VAC to 1050mA, 38W, Class 2 | 1-1 |

For other power supply options consult factory.

PHOTOMETRIC DATA

Coming Soon

Job Name/Date:

Fixture Type Designation: