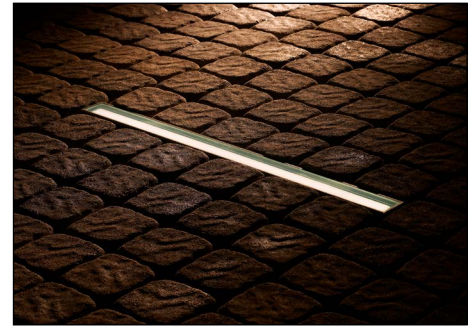


LL1 is an in-grade upright made of extruded aluminum which is offered in 1 ft., 2 ft. or 4 ft. lengths. Driveover rated for 11,000 lbs. Suitable for power washing.

TECHNICAL DATA

Wattage / Input	9W per foot (500mA - 1 ft, 2 ft, 1000mA - 4 ft)
Power Supply	Remote, not included. See page 3.
Construction	Body: Extruded Aluminum Lens: 0.5" Low Iron Clear Tempered Glass
CCT	3000K, 4000K, 5000K
CRI	>80
Delivered Lumens	Coming Soon
Efficacy	Coming Soon
Optics	None
Finishes	Gray Epoxy Polyester Finish
Fixture Dimensions	1.0', 2.0', 4.0' x 4.13" h
LED Source	Samsung 2323 Mid Power LED
IP Rating	IP68, IP69 (Tested to EN / IEC 60598-1)
Driveover Rated	Up to 11,000 lbs



MADE IN AMERICA

Fixture Dimensions
1.0', 2.0' or 4.0' l x 4.13" h
See Full Drawings on page 2 and page 3

ORDERING INFORMATION

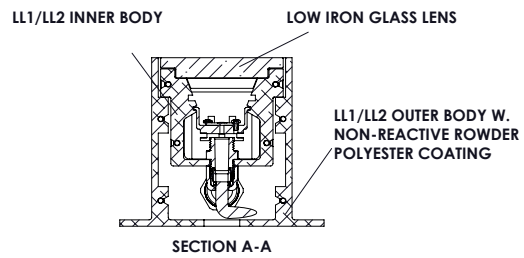
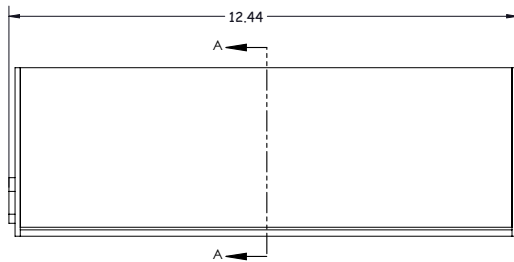
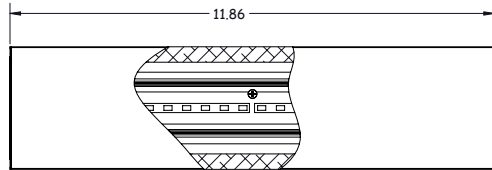
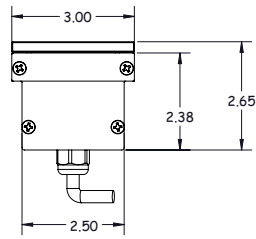
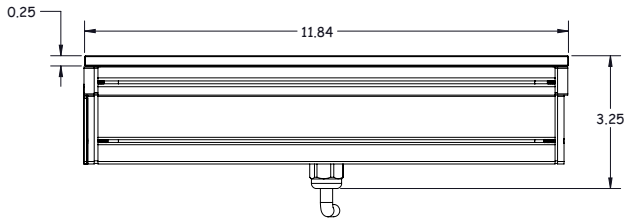
Example: LL1-L-2-40-4-GE-0-X-K-0.

LL1-L	-		-		-	4	-	GE	-	0	-	X	-	K	-	0
Model #	Length	CCT	Body	Finish	Optics	Driver	Lens	Options								
LL1-L	1 - 1' (9W) 2 - 2' (18W) 4 - 4' (36W)	30 - 3000K 40 - 4000K 50 - 5000K	4 - Fully Recessed	GE - Gray Epoxy	0 - None	X - Remote Driver	K - Flash White BTM Clear Top	0 - none								

Job Name/Date:

Fixture Type Designation:

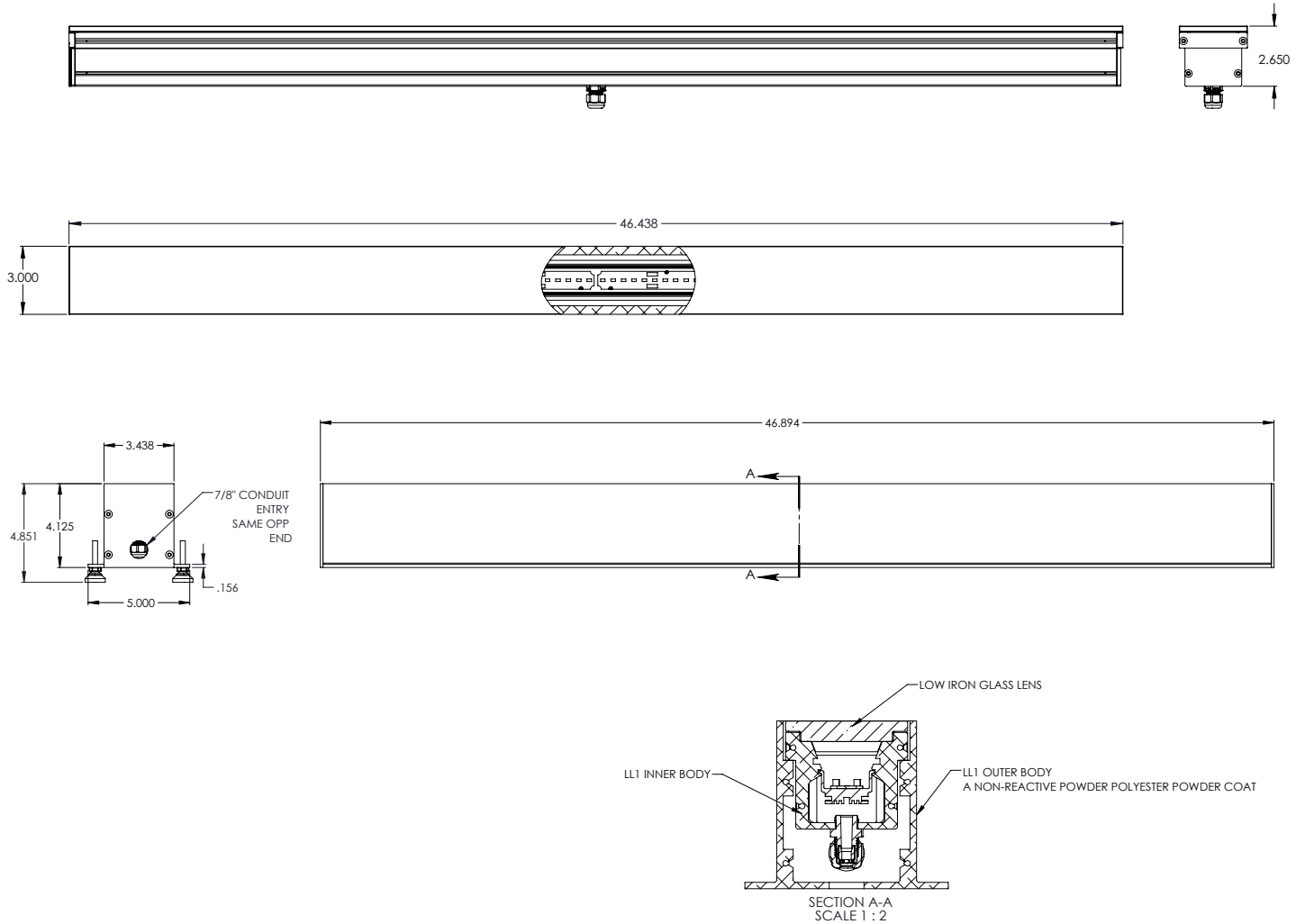
FIXTURE DIMENSIONS



Job Name/Date:

Fixture Type Designation:

FIXTURE DIMENSIONS



ACCESSORIES - Installation



LL301
Leveling Pad
Set of 4

Job Name/Date:

Fixture Type Designation:

SUGGESTED POWER SUPPLIES

500mA - 1 ft. version - 9W

Part Number	Description	Input/Output	# of Fixtures (1 ft.)
PPLT00154	0-10V Dimming to 10%	120-277VAC to 500mA, 12W, Class 2	1-1
PPLT00465-P	0-10V Dimming to 1.0%	120-277VAC to 500mA, 20W, Class 2, DAMP	1-2
PPLT00527	Phase Dim (120V only)	120VAC to 500mA, 25W, Class 2, IP66	1-2
PPLT00309-P	0-10V Dimming to 0.1%	120-277VAC to 500mA, 50W, Class 2, DAMP	1-2
PPLT00538-P	0-10V Dimming to 0.1% (4 channels)	120-277VAC to 500mA, 100W, Class 2, DAMP	1-2 (1-8)

Suggested Lutron Compatible - 500mA - 1 ft. - 9W version

Part Number	Option	Lutron SKU	Dim Range	Description	Input/Output	# of Fixtures
PPLT00195	L3DAE / L3DA3W	L3DA	100%-1%	Hi-Lume™ 1% EcoSystem™ or 1% 3-Wire LED Driver	120-277VAC to 500mA, 19W, Class 2	1-1
PPLT00676	PEQ0E	PEQ0	100%-0.1%	Hi-Lume™ Premier 0.1% EcoSystem™ F2B LED Driver	120-277VAC to 500mA, 20W, Class 2	1-1
PPLT00180	L3DAE / L3DA3W	L3DA	100%-1%	Hi-Lume™ 1% EcoSystem™ or 1% 3-Wire LED Driver	120-277VAC to 500mA, 27W, Class 2	2-2

SUGGESTED POWER SUPPLIES

500mA - 2 ft. version - 18W

Part Number	Description	Input/Output	# of Fixtures (2 ft.)
PPLT00465-P	0-10V Dimming to 1.0%	120-277VAC to 500mA, 20W, Class 2, DAMP	1-1
PPLT00527	Phase Dim (120V only)	120VAC to 500mA, 25W, Class 2, IP66	1-1
PPLT00309-P	0-10V Dimming to 0.1%	120-277VAC to 500mA, 50W, Class 2, DAMP	1-1
PPLT00538-P	0-10V Dimming to 0.1%	120-277VAC to 500mA, 100W, Class 2, DAMP	1-4

Suggested Lutron Compatible - 500mA - 2 ft. - 18W version

Part Number	Option	Lutron SKU	Dim Range	Description	Input/Output	# of Fixtures
PPLT00195	L3DAE / L3DA3W	L3DA	100%-1%	Hi-Lume™ 1% EcoSystem™ or 1% 3-Wire LED Driver	120-277VAC to 500mA, 19W, Class 2	1-1
PPLT00180	L3DAE / L3DA3W	L3DA	100%-1%	Hi-Lume™ 1% EcoSystem™ or 1% 3-Wire LED Driver	120-277VAC to 500mA, 27W, Class 2	1-1

SUGGESTED POWER SUPPLIES

1000mA - 4 ft. version - 36W

Part Number	Description	Input/Output	# of Fixtures (4 ft.)
PPLT00309-P	0-10V Dimming to 0.1%	120-277VAC to 1000mA, 50W, Class 2, DAMP	1-1
PPLT00467-P	0-10V Dimming to 1.0%	120-277VAC to 1000mA, 50W, Class 2, DAMP	1-1

Suggested Lutron Compatible - 1000mA - 4 ft. - 36W version

Part Number	Option	Lutron SKU	Dim Range	Description	Input/Output	# of Fixtures
PPLT00519	L3DAE / L3DA3W	L3DA	100%-1%	Hi-Lume™ 1% EcoSystem™ or 1% 3-Wire LED Driver	120-277VAC to 1050mA, 38W, Class 2	1-1

For other power supply options consult factory.

PHOTOMETRIC DATA

Coming Soon

Job Name/Date:

Fixture Type Designation: