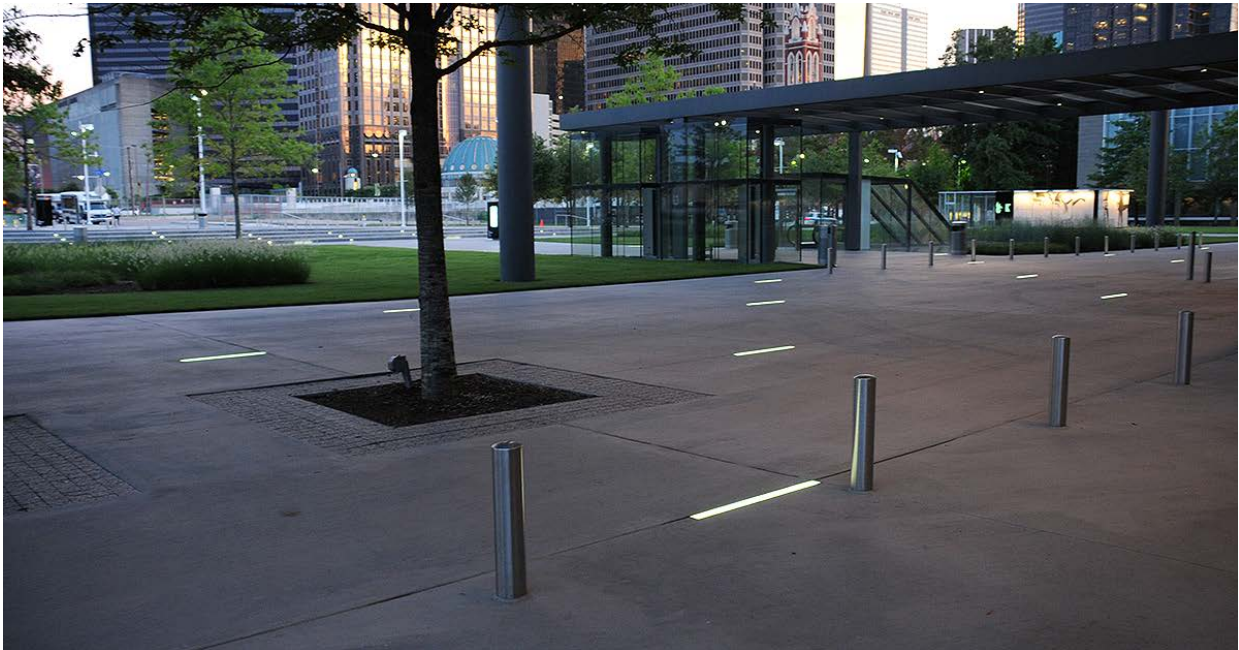


LL3 / LL4

IP68 / IP69K - Ingrade Linear Uplights

(Tested to EN / IEC 60598-1)



Dallas Performing Arts Center, Tillotson Design, Lighting Consultant

designplan® 

The LL3 and LL4 are rated wet label IP68 and IP69K (suitable for power washing).

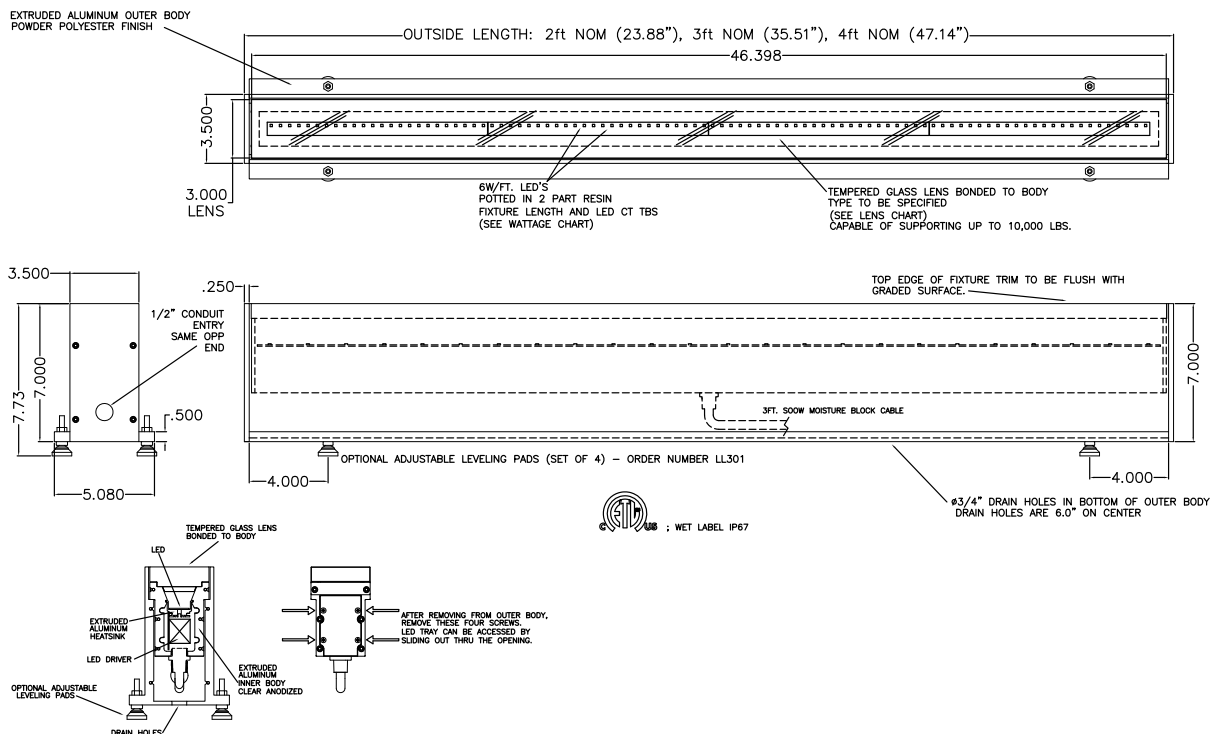
Drive-over rated up to 20,000 lbs.

LL3

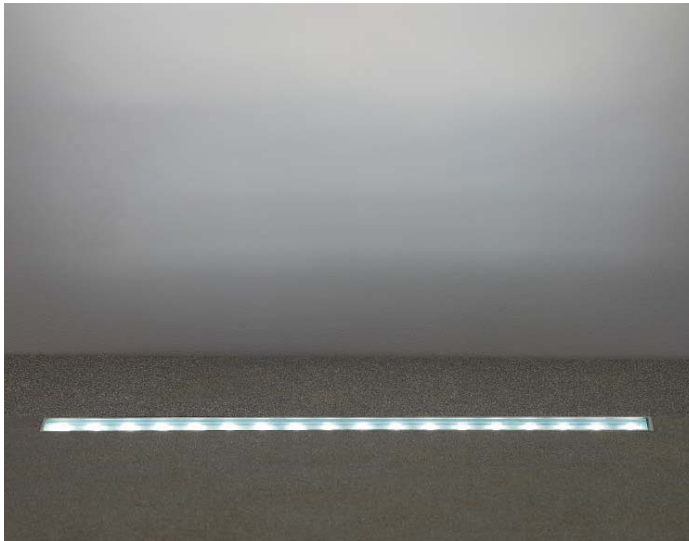


The LL3 is an ingrade uplight made of extruded aluminum which is offered in 2 ft., 3 ft., 4 ft. lengths.

Wattage / Input	6.4W per foot (120-277VAC)
Power Supply	Integral - 0-10V Dimming
Construction	Body: Extruded Aluminum Lens: 1.0" Clear Tempered Glass Lens Frame: Threaded Bottlecap
CCT	3000K, 5000K
CRI	CRI>80
Optics	None
Finishes	Gray Epoxy Polyester Finish
Fixture Dimensions	2.0', 3.0', 4.0', 6.0' l x 7.0" h
Fixture Weight	—
LED Source	Samsung 2323 Mid Power LED
IP Rating	IP67, IP69K
Impact Rating	—

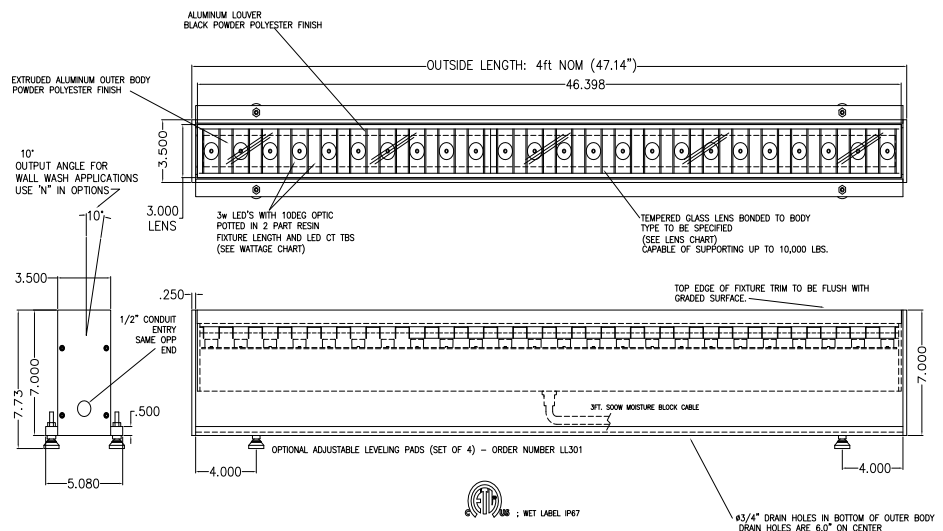
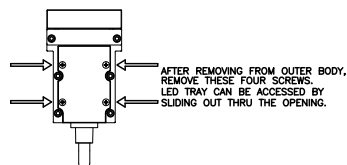
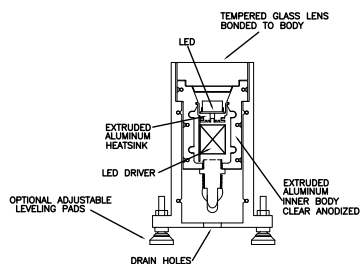


LL4



The LL4 is an ingrade uplight made of extruded aluminum which is offered in 2 ft., 3 ft. and 4 ft. lengths.

Wattage / Input	3W (120-277VAC)
Power Supply	Integral - 0-10V Dimming
Construction	Body: Extruded Aluminum Lens: 1.0" Clear Tempered Glass Lens Frame: Threaded Bottlecap
CCT	3000K, 5000K
CRI	CRI>80
Optics	5 Standard (see below)
Finishes	Gray Epoxy Polyester Finish
Fixture Dimensions	2.0', 3.0', 4.0' l x 7.0" h
Fixture Weight	—
LED Source	Cree XPE LED
IP Rating	IP67, IP69K
Impact Rating	—



The LL3 and LL4 are rated wet label IP68 and IP69K (suitable for power washing).

Drive-over rated up to 20,000 lbs.