

The LL3 is an ingrade uplight made of extruded aluminum which is offered in 2 ft., 3 ft., 4 ft. lengths. Driveover rated for 20,000 lbs. Suitable for power washing.

TECHNICAL DATA

Wattage / Input	6.4W per foot (120-277VAC)
Power Supply	Integral - 0-10V Dimming
Construction	Body: Extruded Aluminum Lens: 1.0" Clear Tempered Glass Lens Frame: Threaded Bottlecap
CCT	3000K, 5000K
CRI	>80
Delivered Lumens	371 lm per foot (3000K)
Efficacy	58 lm/W per foot
Optics	None
Finishes	Gray Epoxy Polyester Finish
Fixture Dimensions	2.0', 3.0', 4.0', 6.0' l x 7.0" h
Fixture Weight	—
LED Source	Samsung 2323 Mid Power LED
IP Rating	IP68, IP69 (Tested to EN / IEC 60598-1)
Driveover Rated	Up to 20,000 lbs



MADE IN AMERICA

Fixture Dimensions
2.0', 3.0', 4.0', 6.0' l x 7.0" h
See Full Drawing on page 2

ORDERING INFORMATION

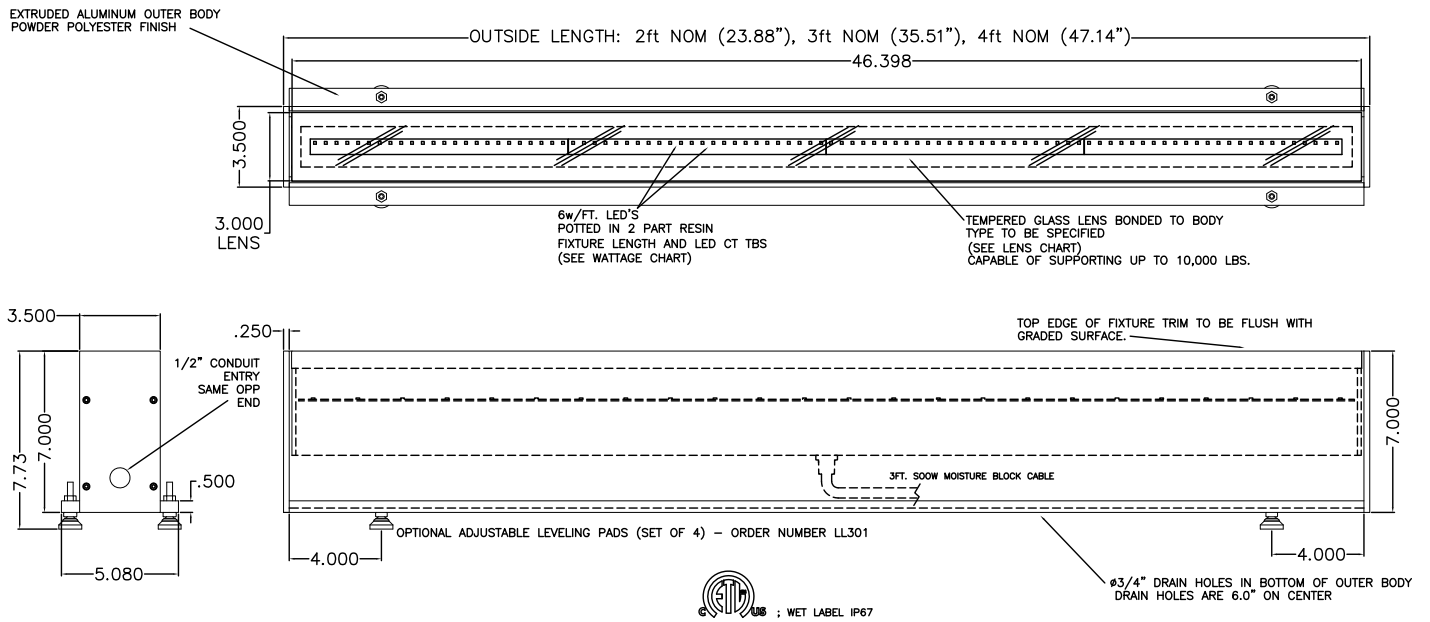
Example: LL3-L-FH-4-GE-0-C-J-0.

LL3-L	-		-	4	-	GE	-	0	-	C	-		-	0
Model #	CCT	Body	Finish	Optics	Driver	Lens	Options							
LL3-L	FD - 3000K, 2.0' FE - 5000K, 2.0' FF - 3000K, 3.0' FG - 5000K, 3.0' FH - 3000K, 4.0' FI - 5000K, 4.0'	4 - Fully Recessed	GE - Gray Epoxy	0 - None	C - Integral Driver w/ 0-10V Dimming	K - Flash White BTM Clear Top J - Flash White w/ Anti-Skid Pattern	0 - none							

Job Name/Date:

Fixture Type Designation:

FIXTURE DIMENSIONS



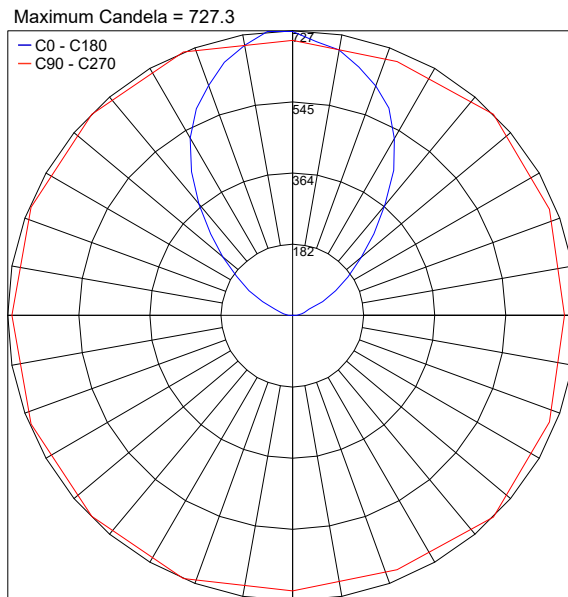
ACCESSORIES - Installation



LL301
Leveling Pad
Set of 4

PHOTOMETRIC DATA

Note all Photometry is 3000K



Job Name/Date:

Fixture Type Designation: