

The LL3 is an ingrade uplight made of extruded aluminum which is offered in 2 ft., 3 ft., 4 ft. lengths. Driveover rated for 20,000 lbs. Suitable for power washing. Inner body and outer body ordered separately.

## TECHNICAL DATA

<b>Wattage / Input</b>	6.4W per foot (120-277VAC)
<b>Power Supply</b>	Integral - 0-10V Dimming
<b>Construction</b>	Body: Extruded Aluminum Lens: 1.0" Clear Tempered Glass Lens Frame: Threaded Bottlecap
<b>CCT</b>	3000K, 5000K
<b>CRI</b>	>80
<b>Delivered Lumens</b>	371 lm per foot (3000K)
<b>Efficacy</b>	58 lm/W per foot
<b>Optics</b>	None
<b>Finishes</b>	Gray Epoxy Polyester Finish
<b>Fixture Dimensions</b>	2.0', 3.0', 4.0', 6.0' l x 7.0" h
<b>LED Source</b>	Samsung 2323 Mid Power LED
<b>IP Rating</b>	IP68, IP69 (Tested to EN / IEC 60598-1)
<b>Driveover Rated</b>	Up to 20,000 lbs



**MADE IN AMERICA**

Fixture Dimensions  
2.0', 3.0', 4.0', 6.0' l x 7.0" h  
See Full Drawing on page 2

## ORDERING INFORMATION

**REQUIRED INNER BODY - Example: LL3-L-FH-4-0-C-K-0.**

LL3-L	-		-	4	-	0	-	C	-		-	0
Model #	CCT	Body	Optics	Driver	Lens	Options						
LL3-L	FD - 3000K, 2.0' FE - 5000K, 2.0' FF - 3000K, 3.0' FG - 5000K, 3.0' FH - 3000K, 4.0' FI - 5000K, 4.0'	4 - Fully Recessed	0 - None	C - Integral Driver w/ 0-10V Dimming	K - Flash White BTM Clear Top J - Flash White w/ Anti-Skid Pattern	0 - none						

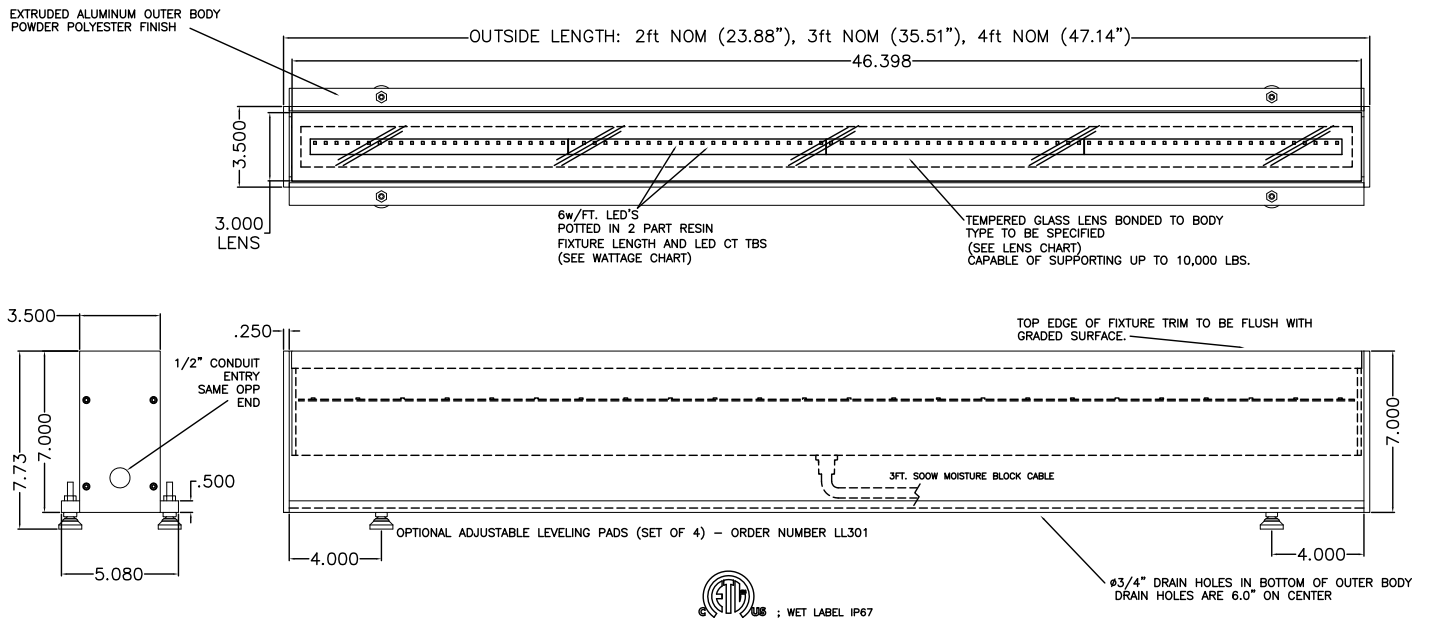
**REQUIRED OUTER BODY - Example: LL3/4-O-040GE**

LL3/4-O	-		-	0GE
Model #	Length	Finish		
LL3/4-O	02 - 2 ft 03 - 3 ft 04 - 4 ft	0GE - Gray Epoxy		

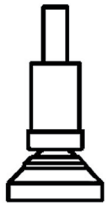
Job Name/Date:

Fixture Type Designation:

**FIXTURE DIMENSIONS**



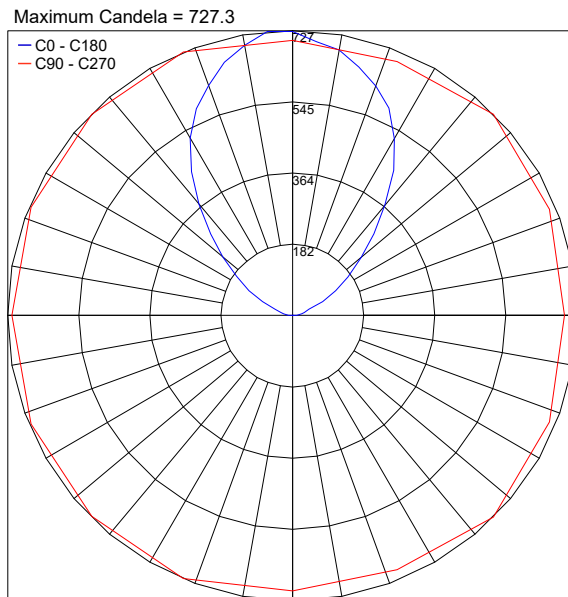
**ACCESSORIES - Installation**



**LL301** - Optional  
Leveling Pad  
Set of 4

**PHOTOMETRIC DATA**

Note all Photometry is 3000K



Job Name/Date:

Fixture Type Designation: