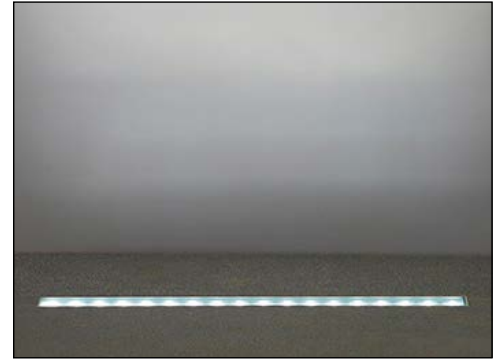


The LL4 is an ingrade upright made of extruded aluminum which is offered in 2 ft., 3 ft., 4 ft. lengths. Driveover rated for 20,000 lbs. Suitable for power washing.

## TECHNICAL DATA

<b>Wattage / Input</b>	16W per foot (120-277VAC)
<b>Power Supply</b>	Integral - 0-10V Dimming
<b>Construction</b>	Body: Extruded Aluminum Lens: 1.0" Clear Tempered Glass Lens Frame: Threaded Bottlecap
<b>Shielding</b>	Asymmetric Tilt Lens, Segmented Blade or Honeycomb Louver can be added
<b>CCT</b>	3000K, 5000K
<b>CRI</b>	CRI>80
<b>Delivered Lumens</b>	2715 lm (3000K, 21°, 4' - none) 2490 lm (3000K, 21°, 4' - Seg Louver) 2358 lm (3000K, 21°, 4' - Asym)
<b>Optics</b>	5 Standard (see below)
<b>Finishes</b>	Gray Epoxy Polyester Finish
<b>Fixture Dimensions</b>	2.0', 3.0', 4.0' l x 7.0" h
<b>Fixture Weight</b>	—
<b>LED Source</b>	Cree XPE LED
<b>IP Rating</b>	IP68, IP69K (Tested to EN / IEC 60598-1)
<b>Driveover Rated</b>	Up to 20,000 lbs



**MADE IN THE U.S.A.**

Fixture Dimensions  
2.0', 3.0', 4.0' l x 7.0" h  
See Full Drawing on page 2

## ORDERING INFORMATION

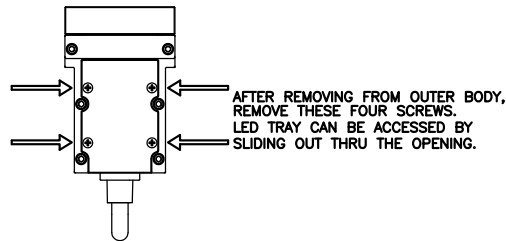
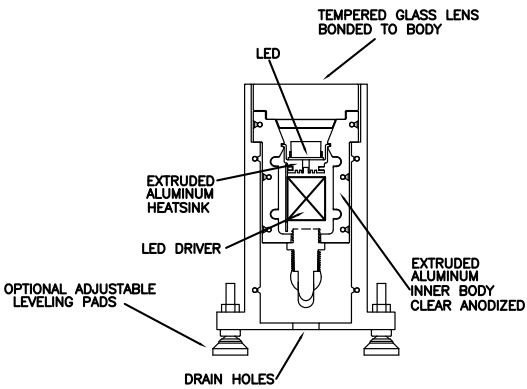
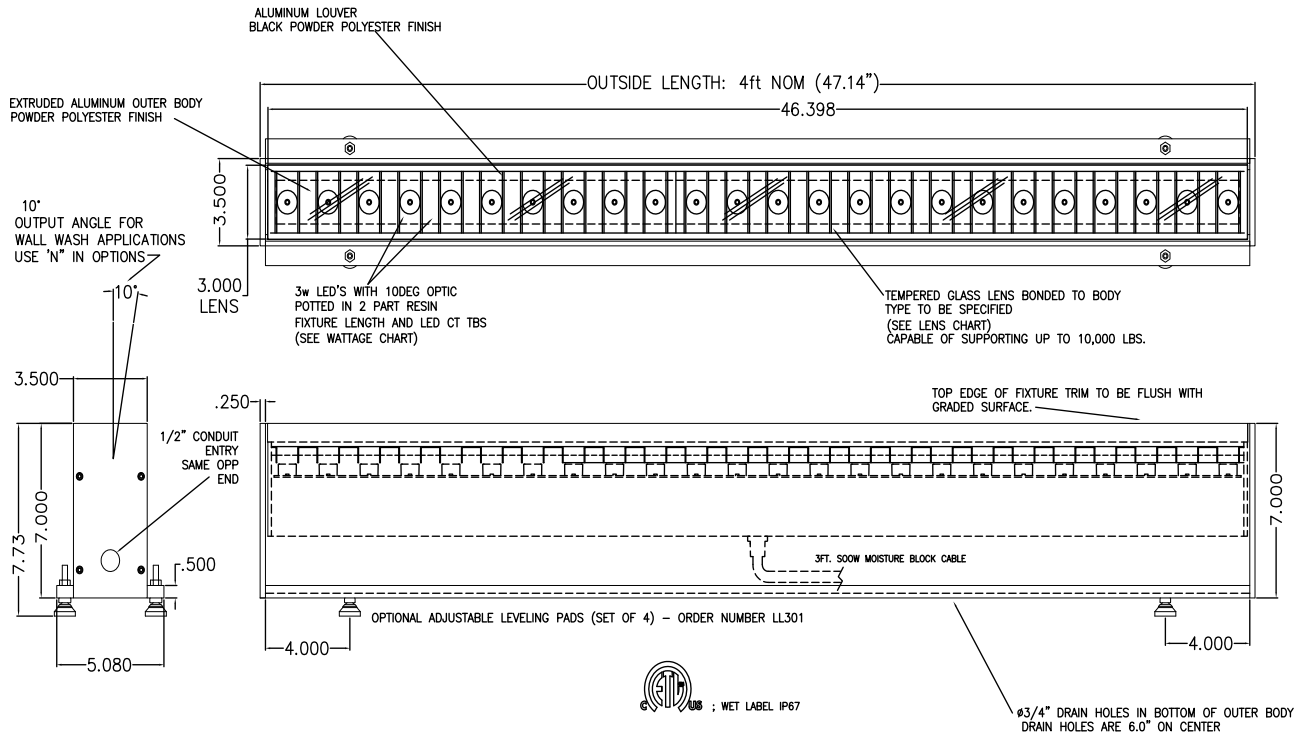
Example: LL4-L-BB-4-GE-3-C-T-0.

LL4-L	-		-	4	-	GE	-		-	C	-		-	
Model #	CCT	Body	Finish	Optics	Driver	Lens	Options							
LL4-L	<b>AB</b> - 3000K, 2 ft <b>BB</b> - 5000K, 2 ft <b>AD</b> - 3000K, 3 ft <b>BD</b> - 5000K, 3 ft <b>AF</b> - 3000K, 4 ft <b>BF</b> - 5000K, 4 ft	<b>4</b> - Fully Recessed	<b>GE</b> - Gray Epoxy	<b>0</b> - None <b>1</b> - 10° <b>2</b> - 21° <b>3</b> - 39° <b>4</b> - 10°x44°	<b>C</b> - Integral Driver w/ 0-10V Dimming	<b>T</b> - Clear Tempered Glass  <b>Q</b> - Clear Tempered w/ Anti-Skid Pattern	<b>0</b> - none <b>R</b> - Segmented Louver  <b>Q</b> - Honeycomb Louver  <b>N</b> - Asymmetric Tilt Lens	<div style="border: 1px solid black; padding: 5px; width: fit-content;"> <b>NOTE: "N" not suitable for 10°x44° optic)</b> </div>						

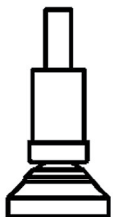
Job Name/Date:

Fixture Type Designation:

**FIXTURE DIMENSIONS**



**ACCESSORIES - Installation**



**LL301**  
Leveling Pad  
Set of 4

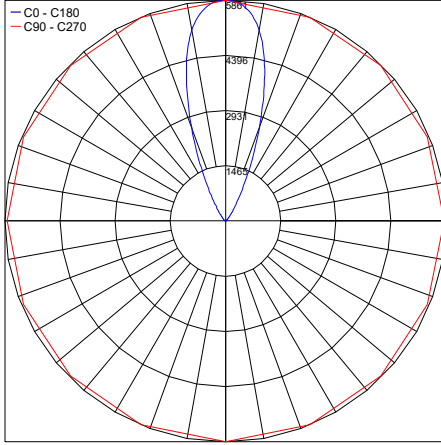
Job Name/Date:

Fixture Type Designation:

## PHOTOMETRIC DATA

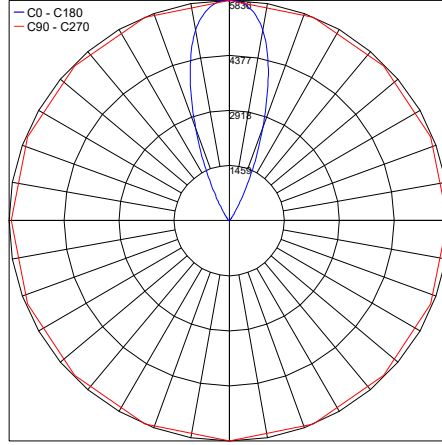
Note all Photometry is 3000K

Maximum Candela = 5861



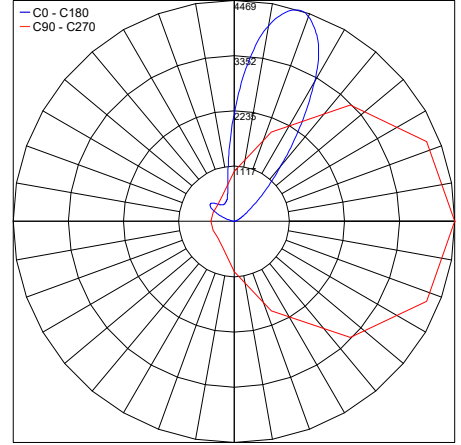
PHOTOMETRIC FILENAME : LL4 3W 3K 39° NONE (LL4-L-4-AF-4-GE-3-C-T-0).IES

Maximum Candela = 5836



PHOTOMETRIC FILENAME : LL4 3W 3K 39° SEG LOUV (LL4-L-4-AF-4-GE-3-C-T-R).IES

Maximum Candela = 4469



PHOTOMETRIC FILENAME : LL4 3W 3K 39° ASYM (LL4-L-4-AF-4-GE-3-C-T-V).IES

Job Name/Date:

Fixture Type Designation: