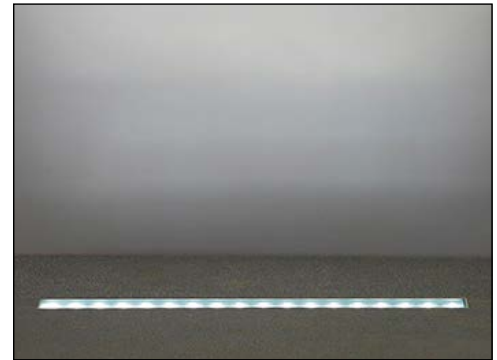


The LL4 is an ingrade upright made of extruded aluminum which is offered in 2 ft., 3 ft., 4 ft. lengths. Driveover rated for 20,000 lbs. Suitable for power washing.

TECHNICAL DATA

Wattage / Input	16W per foot (120-277VAC)
Power Supply	Integral - 0-10V Dimming
Construction	Body: Extruded Aluminum Lens: 1.0" Clear Tempered Glass Lens Frame: Threaded Bottlecap
Shielding	Asymmetric Tilt Lens, Segmented Blade or Honeycomb Louver can be added
CCT	3000K, 5000K
CRI	CRI>80
Delivered Lumens	2715 lm (3000K, 21°, 4' - none) 2490 lm (3000K, 21°, 4' - Seg Louver) 2358 lm (3000K, 21°, 4' - Asym)
Optics	5 Standard (see below)
Finishes	Gray Epoxy Polyester Finish
Fixture Dimensions	2.0', 3.0', 4.0' l x 7.0" h
Fixture Weight	—
LED Source	Cree XPE LED
IP Rating	IP68, IP69 (Tested to EN / IEC 60598-1)
Driveover Rated	Up to 20,000 lbs



MADE IN AMERICA

Fixture Dimensions
2.0', 3.0', 4.0' l x 7.0" h
See Full Drawing on page 2

ORDERING INFORMATION

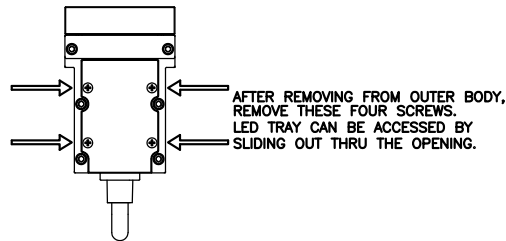
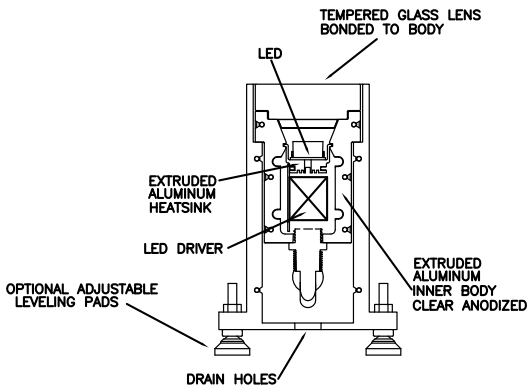
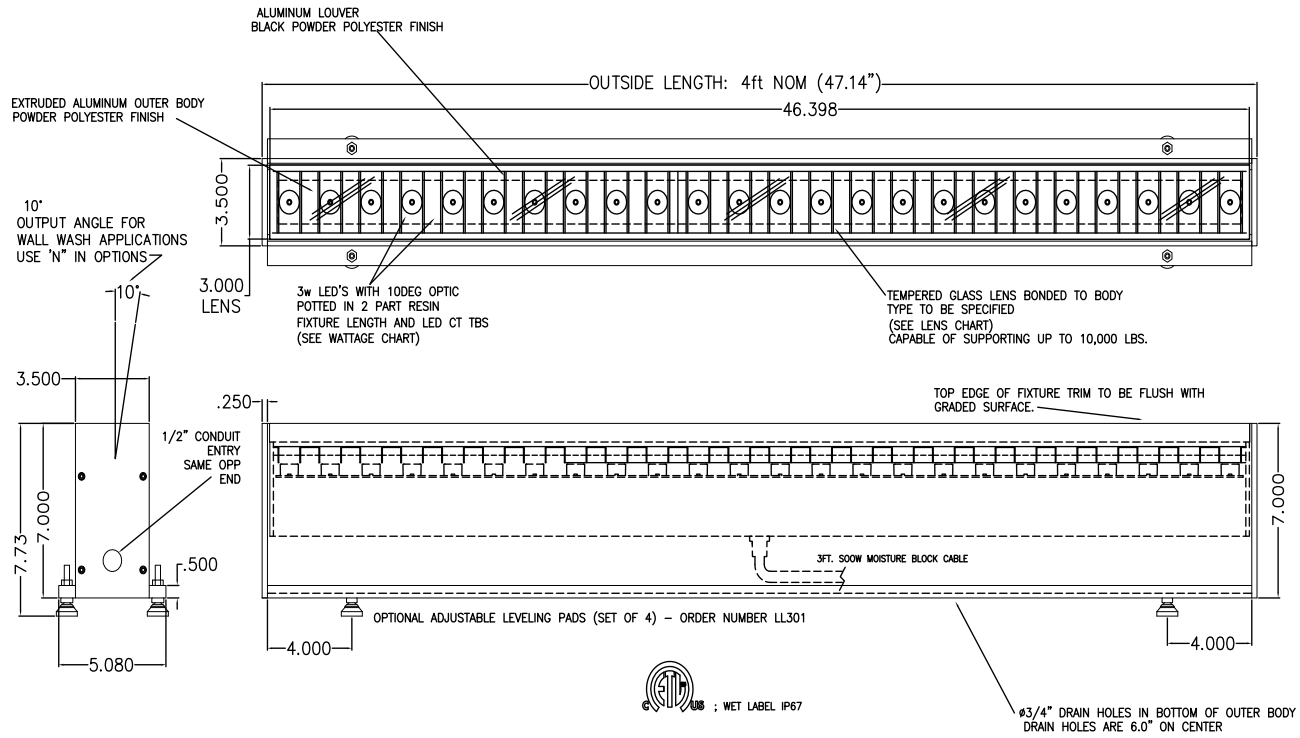
Example: LL4-L-BB-4-GE-3-C-T-0.

LL4-L	-		-	4	-	GE	-		-	C	-		-	
Model #	CCT	Body	Finish	Optics	Driver	Lens	Options							
LL4-L	AB - 3000K, 2 ft BB - 5000K, 2 ft AD - 3000K, 3 ft BD - 5000K, 3 ft AF - 3000K, 4 ft BF - 5000K, 4 ft	4 - Fully Recessed	GE - Gray Epoxy	0 - None 1 - 10° 2 - 21° 3 - 39° 4 - 10°x44°	C - Integral Driver w/ 0-10V Dimming	T - Clear Tempered Glass Q - Clear Tempered w/ Anti-Skid Pattern	0 - none R - Segmented Louver Q - Honeycomb Louver N - Asymmetric Tilt Lens	<div style="border: 1px solid black; padding: 5px; width: fit-content;"> NOTE: "N" not suitable for 10°x44° optic) </div>						

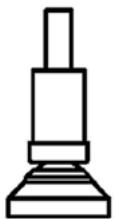
Job Name/Date:

Fixture Type Designation:

FIXTURE DIMENSIONS



ACCESSORIES - Installation



LL301
Leveling Pad
Set of 4

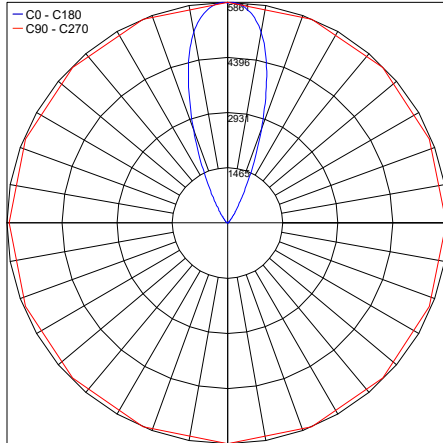
Job Name/Date:

Fixture Type Designation:

PHOTOMETRIC DATA

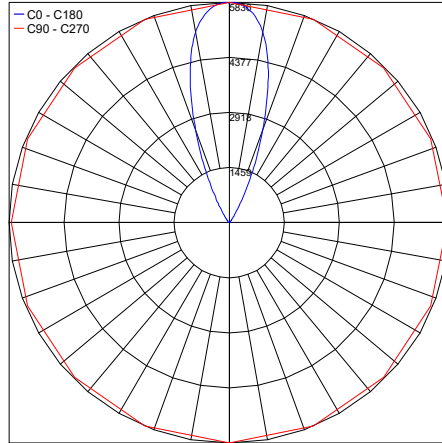
Note all Photometry is 3000K

Maximum Candela = 5861



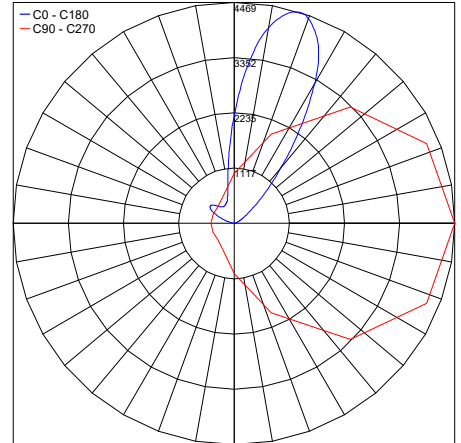
PHOTOMETRIC FILENAME : LL4 3W 3K 39° NONE (LL4-L-4-AF-4-GE-3-C-T-0).IES

Maximum Candela = 5836



PHOTOMETRIC FILENAME : LL4 3W 3K 39° SEG LOUV (LL4-L-4-AF-4-GE-3-C-T-R).IES

Maximum Candela = 4469



PHOTOMETRIC FILENAME : LL4 3W 3K 39° ASYM (LL4-L-4-AF-4-GE-3-C-T-V).IES

Job Name/Date:

Fixture Type Designation: