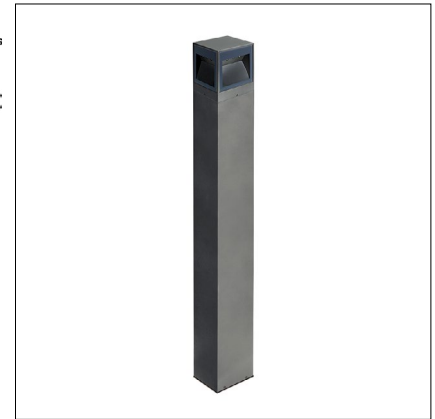


LINEAR 4.4

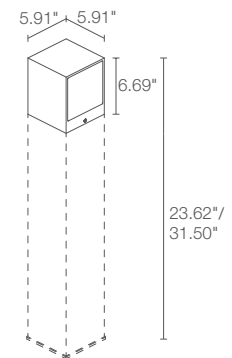
Linear are a series of bollards for outdoor use, available in different heights and ideal for gardens and small paths. Linear 4 features 1, 2 and 4 beam options, asymmetric optics, and 3 standard finishes. Dark Sky compliant.



TECHNICAL DATA

Wattage / Input	28W (120VAC)
Power Supply	Integral
Construction	Body: Aluminum Alloy EN AW 6060 Lens: Serigraphed, transparent and tempered extra-clear glass
CCT	2700K, 3000K, 4000K
CRI	>80
BUG Rating	B1-U1-G1
Delivered Lumens	243 lm per beam (3000K) Dark Sky compliant
Efficacy	8.7 lm/W per beam (3000K)
Optics	Asymmetrical
Finishes	3 Standard, Custom RAL (see below) (4 Stage Marine Grade Finish)
Fixture Dimensions	5.91" l x 5.91" w x 6.69" / 23.62" / 31.50" h
Fixture Weight	7.72 lbs, 11.68 lbs, 13.45 lbs
LED Source	12 Power LEDs
Lumen Maintenance	L90, B10 >50,000hrs (Ta 25°C)
Color Consistency	1/4 ANSI BIN
Operating Temp.	-4°F to +113°F
IP Rating	IP65
IK Rating	IK06

Fixture Dimensions



ORDERING INFORMATION

Example: CL44105AF. Accessories ordered separately.

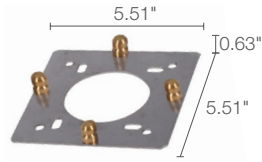
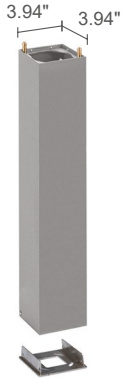
CL4410		A	
Model No.	CCT	Optics	Finish
CL4410	F - 2700K 5 - 3000K 9 - 4000K	A - Asymmetrical	F - Gray H - Anthracite T - Corten C - Custom RAL (consult factory for "C")

Job Name/Date:

Fixture Type Designation:

ACCESSORIES

Installation



WT000001

Plate for ground installation

**For Use if POLE
IS NOT ORDERED**

WT40 _____

Column

*For column include one of the below
heights then choose a finish:*

600 - 23.62"	F - Gray
800 - 31.50"	H - Anthracite
	T - Corten

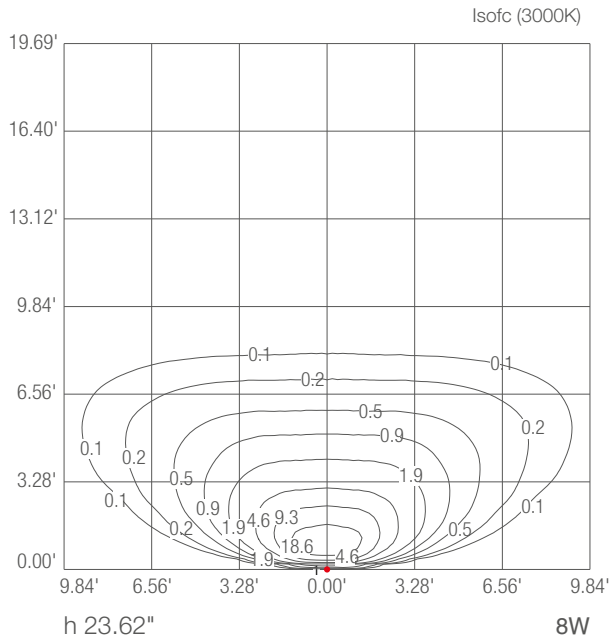
Job Name/Date:

Fixture Type Designation:

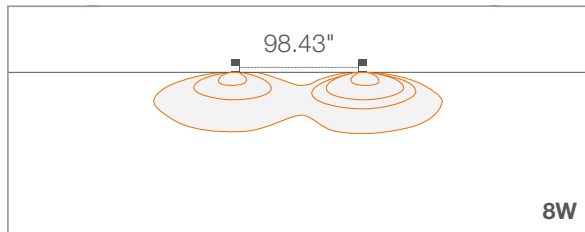
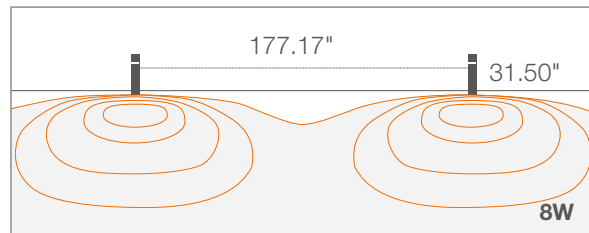
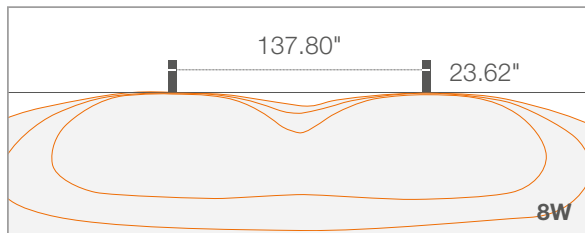
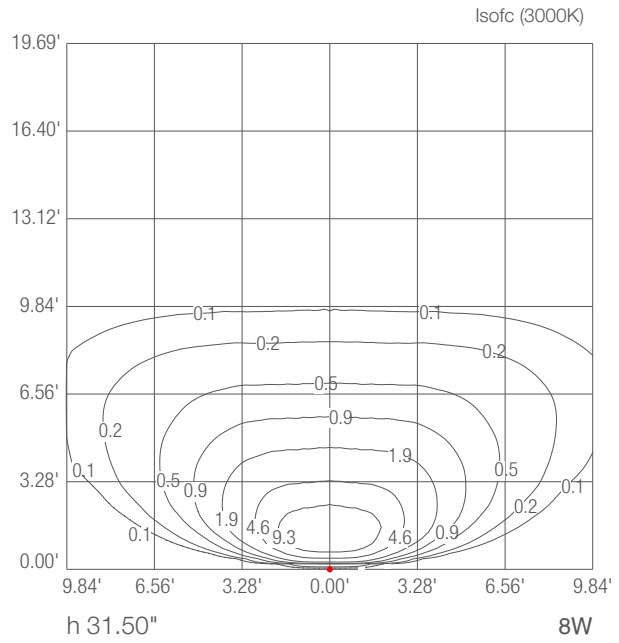
PHOTOMETRIC DATA

Note all Photometry is 3000K, per beam

A - Asymmetrical



A - Asymmetrical



Job Name/Date:

Fixture Type Designation: