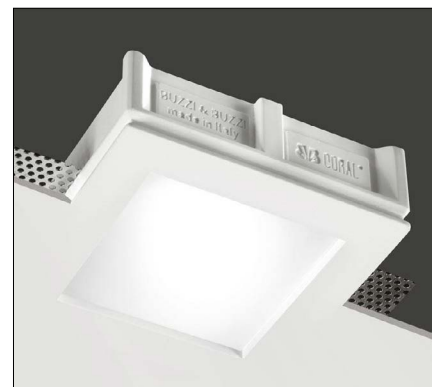


Liszt is a totally disappearing indoor recessed downlight installable on plasterboard, brick walls or ceilings. The body of this fixture is made of Coral® with extra white frosted glass.



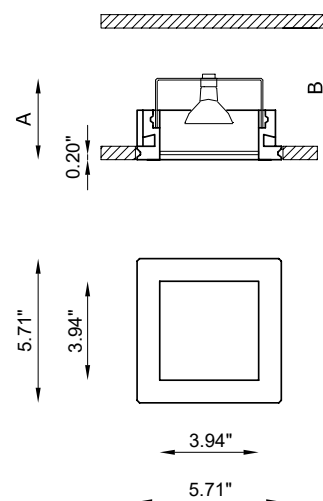
TECHNICAL DATA

Wattage / Input	9W (500mA)
Power Supply	Remote, not included. See page 2.
Construction	Body: Coral® Lens: Extra White Satin Glass
CCT	3000K 2700K, 4000K upon request
CRI	>90
Delivered Lumens	557 lm (3000K)
Efficacy	61.9 lm/W (3000K)
Optics	40°
Finishes	Coral® - Unfinished
Cut-Out Dimensions	6.10" x 6.10"
Fixture Dimensions	5.71" l x 5.71" w
Aperture	3.94" x 3.94"
Fixture Weight	1.98 lbs
LED Source	1 COB Professional LED
IP Rating	IP40

The body is made of Coral® a unique patented composite material made from natural minerals and aggregating elements.

Additionally, Coral® is:
 Extreme resistance to high temperatures and thermal shock.
 Highly impervious to knocks and scratches.
 Can easily be decorated with any type of paint (water or spirit based).
 Made of non-toxic materials and is non-allergic.
 Does not produce fumes, even in case of fire.
 Naturally dust repellent

Ceiling Cut-Out: 6.10" x 6.10"
 Fixture Dimensions: 5.71" l x 5.71" w



ORDERING INFORMATION

Example: BU4426.Z.40.00.US. Power Supplies / Accessories ordered separately.

BU4426.Z		00	US
Model No.	CCT	Finish	
BU4426.Z	30 - 3000K (standard) 27 - 2700K (on request) 40 - 4000K (on request)	00 - Coral®	US

Job Name/Date:

Fixture Type Designation:

SUGGESTED POWER SUPPLIES

500mA

Part Number	Description	Input/Output	Fixtures
PPLT00497	Phase Dim (120V Only)	120VAC to 500mA, 12W, Class 2, DAMP	1-1
PPLT00465-P	0-10V Dimming to 1.0%	120-277VAC to 500mA, 20W, Class 2, DAMP	1-2
PPLT00467-P	0-10V Dimming to 1.0%	120-277VAC to 500mA, 50W, Class 2, DAMP	1-2
PPLT00561-P	0-10V Dimming to 0.1%	120-277VAC to 500mA, 100W, Class 2	1-3

Suggested Lutron Compatible Drivers

Part Number	Option	Lutron SKU	Dim Range	Description	Input/Output	Fixtures
PPLT00259	L3DAE / L3DA3W	L3DA	100%-1%	Hi-Lume™ 1% EcoSystem™ or 1% 3-Wire LED Driver	120-277VAC, 10W	1-1
PPLT00195	L3DAE / L3DA3W	L3DA	100%-1%	Hi-Lume™ 1% EcoSystem™ or 1% 3-Wire LED Driver	120-277VAC, 19W	1-2
PPLT00180	L3DAE / L3DA3W	L3DA	100%-1%	Hi-Lume™ 1% EcoSystem™ or 1% 3-Wire LED Driver	120-277VAC, 27W	2-2

For other power supply options consult factory.

ACCESSORIES

Installation



BACK BOX

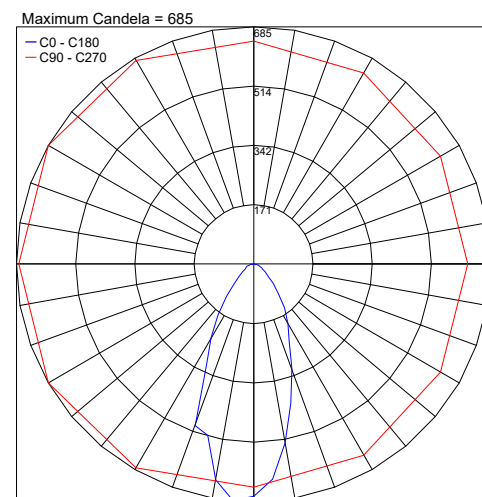
BR4426-LT - Back box to be used for IC rating

BR4426-LT-C - Back box to be used for Chicago Plenum

BR4426-LT-PC - Back box to be used for Concrete Pour

PHOTOMETRIC DATA

Note: All photometry is 3000K



Job Name/Date:

Fixture Type Designation: