

# MIN / MAX - LINEA IP67

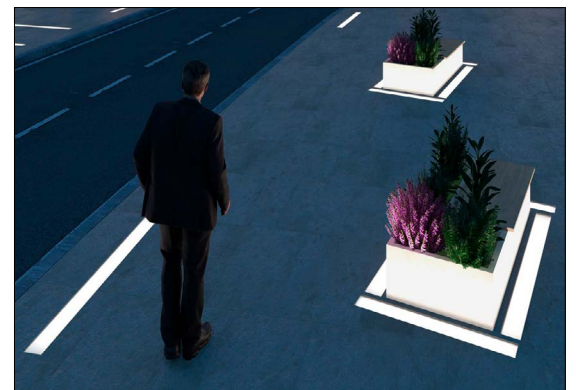
MIN / MAX Linea is a linear, IP67-rated LED luminaire for flush installation on floors in indoor or outdoor areas. It is available in 5 different sizes with antislip glass. Driveover rated up to 11,000 lbs. Pressure switch on request. Can be ordered in IP68 stainless steel version suitable for fountains - see Fountain Lighting section.



Fixture Dimensions - See page 2

## TECHNICAL DATA

<b>Wattage / Input</b>	5W, 10W, 15W, 20W, 25W
<b>Power Supply</b>	Remote 24VDC, not included. See page 2.
<b>Construction</b>	Body: Stainless Steel AISI 304 Lens: Extra Clear Tempered Glass Cable Length: 1.64'
<b>CCT</b>	2700K, 3000K, 4000K (RGBW or Tunable White on request)
<b>BUG Rating</b>	B0-U3-G0
<b>Delivered Lumens</b>	415-2015 lm (3000K)
<b>Efficacy</b>	80- 93 lm/W (3000K)
<b>Optics</b>	Diffuse
<b>Finishes</b>	Antislip or Sandblasted Glass
<b>Fixture Dimensions</b>	9.8", 19.7", 29.5", 39.4", 49.2" x 3.9" w x 1.6" h
<b>Color Consistency</b>	3-Step MacAdam
<b>IP Rating</b>	IP67
<b>Impact Resistance</b>	IK10
<b>Driveover Capacity</b>	Up to 11,000 lbs



## ORDERING INFORMATION

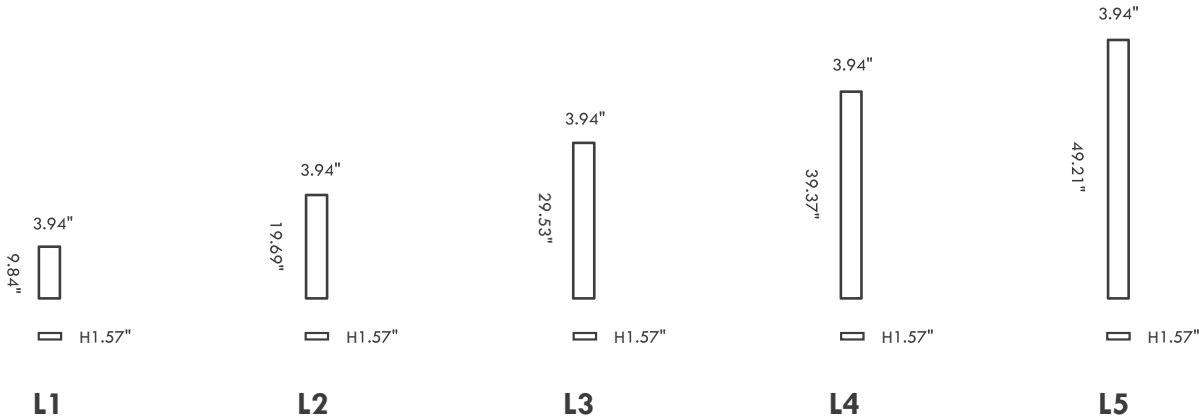
Example: LM07.103930.US.A1.DI.BP. Required Accessories / Power Supplies ordered separately.

<input type="text"/>	<input type="text"/>	<input type="text" value="DI"/>	<input type="text"/>
<b>Model No.</b>	<b>Finish</b>	<b>Optic</b>	<b>CCT</b>
LM07.103874.US (L1 - 5W)	A1 - Antislip Glass	DI - Diffuse	BC - 2700K
LM07.103875.US (L2 - 10W)	61 - Satin / Sandblasted Glass		BP - 3000K
LM07.103876.US (L3 - 15W)			BF - 4000K
LM07.103929.US (L4 - 20W)			
LM07.103930.US (L5 - 25W)			

Job Name/Date:

Fixture Type Designation:

## FIXTURE DIMENSIONS



## SUGGESTED POWER SUPPLIES

24VDC

Part Number	Description	Input/Output	# of Fixtures				
			L1	L2	L3	L4	L5
<a href="#">PPLT00543</a>	0-10V Dimming to 15% (-40°C / -40°F cold weather start)	120-277VAC to 24VDC, 100W, Class 2	2-16	2-8	1-5	1-4	1-3
<a href="#">PPLT00284</a>	Non-Dim	120-277VAC to 24VDC, 100W, Class 2	1-16	1-8	1-5	1-4	1-3

## DRIVER IN NEMA 4X ENCLOSURE

Remote 24VDC - ELV / TRIAC / 0-10V



PPLT00715

Part Number	Description	Input/Output	# of Fixtures				
			L1	L2	L3	L4	L5
<a href="#">PPLT00715</a>	ELV / TRIAC / 0-10V Dimming to 0.1%	120-277VAC to 24VDC, 96W, Class 2, WET/DAMP	1-15	1-7	1-5	1-3	1-3

For other power supply options consult factory.

Job Name/Date:

Fixture Type Designation:

## ACCESSORIES - Installation



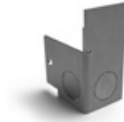
H 3.94"

- LM20.103971-E** (L1 - 4.3" x 10.2" x 3.9" h)
  - LM20.103972-E** (L2 - 4.3" x 20.0" x 3.9" h)
  - LM20.103973-E** (L3 - 4.3" x 29.8" x 3.9" h)
  - LM20.103974-E** (L4 - 4.3" x 39.7" x 3.9" h)
  - LM20.103975-E** (L5 - 4.3" x 49.5" x 3.9" h)
- IP67 Housing - Stainless Steel AISI 304



- LM20.210181**  
Extraction Tool Kit  
(for L1, L2, L3)
- LM20.210182**  
Extraction Tool Kit  
(for L4, L5)

## REQUIRED WITH HOUSING



- LM20.210183**  
Couple of closing end caps

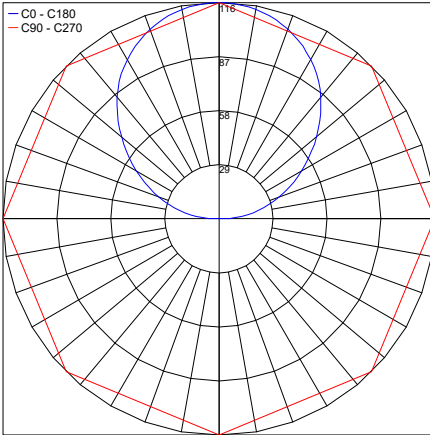


- LM20.210184**  
Coupling joint for continuous lines

## PHOTOMETRIC DATA

### L1

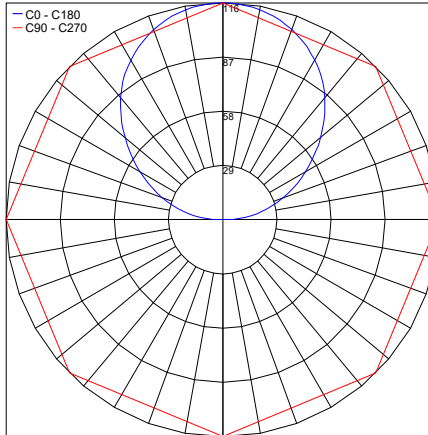
Maximum Candela = 115.9



PHOTOMETRIC FILENAME : L1 LM07.103874.XX.DI.XX L250 IP68.IES

### L2

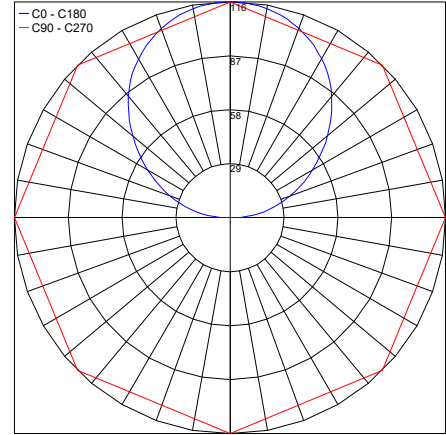
Maximum Candela = 115.9



PHOTOMETRIC FILENAME : L2 LM07.103875.XX.DI.XX L500 IP68.IES

### L3

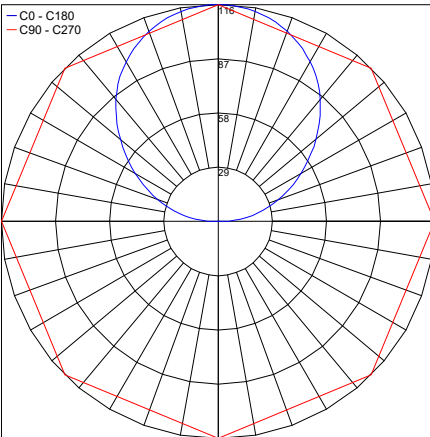
Maximum Candela = 115.9



PHOTOMETRIC FILENAME : L3 LM07.103876.XX.DI.XX L750 IP68.IES

### L4

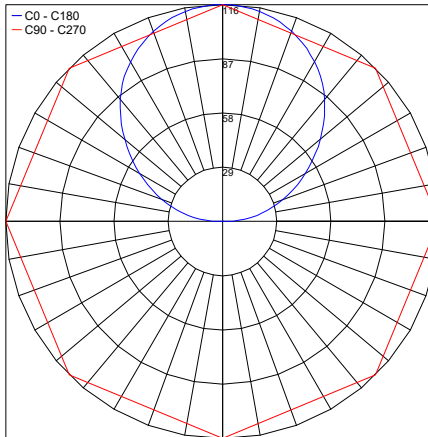
Maximum Candela = 115.9



PHOTOMETRIC FILENAME : L4 LM07.103929.XX.DI.XX L1000 IP68.IES

### L5

Maximum Candela = 115.9



PHOTOMETRIC FILENAME : L5 LM07.103930.XX.DI.XX L1250 IP68.IES

Job Name/Date:

Fixture Type Designation: