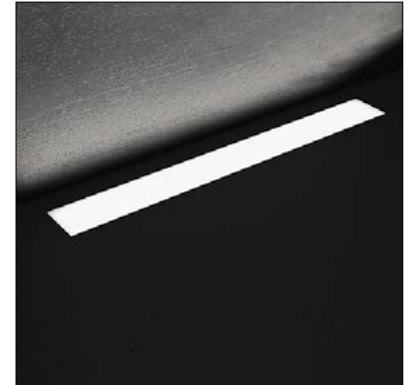


MIN / MAX - LINEA IP67



datasheet

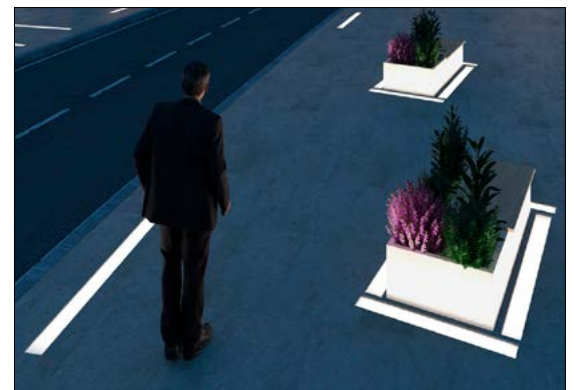
MIN / MAX Linea is a linear, IP67-rated LED luminaire for flush installation on floors in indoor or outdoor areas. It is available in 5 different sizes with antislip glass. Driveover rated up to 11,000 lbs. Pressure switch on request. Can be ordered in IP68 stainless steel version suitable for fountains - see Fountain Lighting section.



Fixture Dimensions - See page 2

TECHNICAL DATA

Wattage / Input	5W, 10W, 15W, 20W, 25W (24VDC)
Power Supply	Remote, not included. See page 2.
Construction	Body: Anticorodal Aluminum Protected by 25 Micron Lens: Extra Clear Tempered Glass Cable Length: 1.64'
CCT	2700K, 3000K, 4000K (RGBW or Tunable White on request)
BUG Rating	B0-U3-G0
Delivered Lumens	415-2015 lm (3000K)
Efficacy	80- 93 lm/W (3000K)
Optics	Diffuse
Finishes	Antislip or Sandblasted Glass
Fixture Dimensions	9.8", 19.7", 29.5", 39.4", 49.2" x 3.9" w x 1.6" h
Color Consistency	3-Step MacAdam
IP Rating	IP67
Impact Resistance	IK10
Driveover Capacity	Up to 11,000 lbs



ORDERING INFORMATION

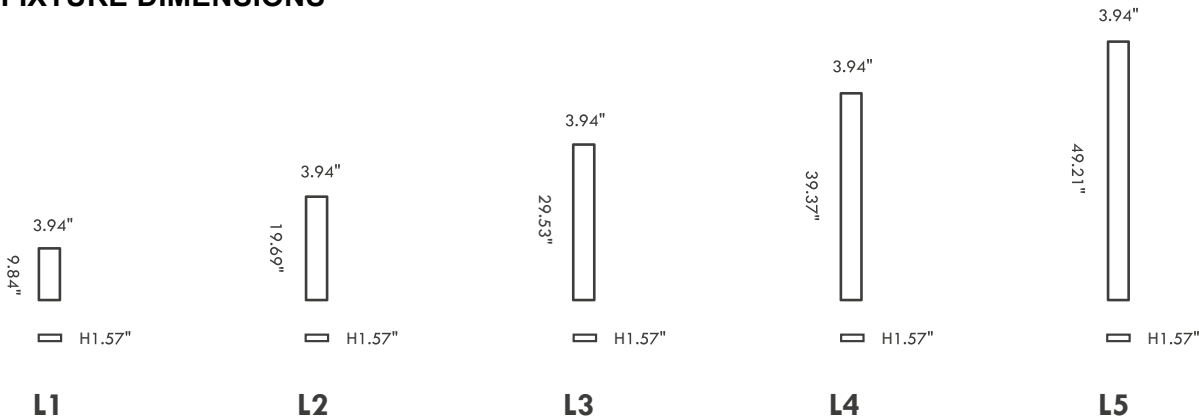
Example: LM07.103903.US.A1.DI.BP. Required Accessories / Power Supplies ordered separately.

<input type="text"/>	<input type="text"/>	<input type="text"/>	<input type="text"/>
Model No.	Finish	Optic	CCT
LM07.103841.US (L1 - 5W)	A1 - Antislip Glass	DI - Diffuse	BC - 2700K
LM07.103842.US (L2 - 10W)	60 - Sandblasted Glass		BP - 3000K
LM07.103843.US (L3 - 15W)			BF - 4000K
LM07.103902.US (L4 - 20W)			
LM07.103903.US (L5 - 25W)			

Job Name/Date:

Fixture Type Designation:

FIXTURE DIMENSIONS



SUGGESTED POWER SUPPLIES

24VDC

Part Number	Description	Input/Output	# of Fixtures				
			L1	L2	L3	L4	L5
PPLT00481	Non-Dim	120-277VAC to 24VDC, 24W, Class 2	1-3	1-1	1-1	—	—
PPLT00157	Non-Dim	120VAC to 24VDC, 60W, Class 2	1-9	1-4	1-3	1-2	1-1
PPLT00599	ELV/TRIAC & 0-10V Dimming (100-0%)	120-277VAC to 24VDC, 96W, Class 2	1-15	1-7	1-5	1-3	1-3
PPLT00158	Non-Dim	120VAC to 24VDC, 100W, Class 2	1-16	1-8	1-5	1-4	1-3
PPLT00543	0-10V Dimming to 15% (-40°C / -40°F cold weather start)	120-277VAC to 24VDC, 100W, Class 2	2-16	2-8	1-5	1-4	1-3

For other power supply options consult factory.

ACCESSORIES - Installation



H 3.94"

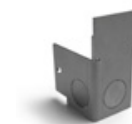
- LM20.103971** (L1 - 4.3" x 10.2" x 3.9" h)
 - LM20.103972** (L2 - 4.3" x 20.0" x 3.9" h)
 - LM20.103973** (L3 - 4.3" x 29.8" x 3.9" h)
 - LM20.103974** (L4 - 4.3" x 39.7" x 3.9" h)
 - LM20.103975** (L5 - 4.3" x 49.5" x 3.9" h)
- IP67 Housing



- LM20.104810**
Light Source Extraction Tool Kit (for L1, L2)

- LM20.104464**
Light Source Extraction Tool Kit (for L3, L4, L5)

REQUIRED WITH HOUSING



- LM20.103977**
Couple of closing end caps



- LM20.104813**
Coupling joint for continuous lines

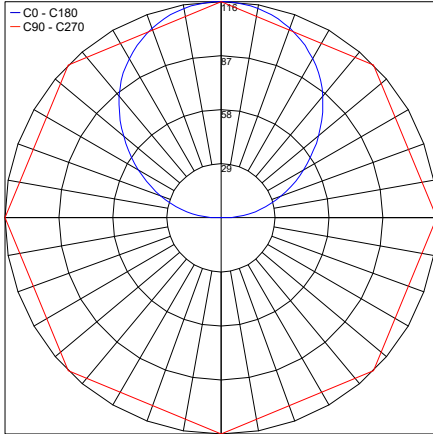
Job Name/Date:

Fixture Type Designation:

PHOTOMETRIC DATA

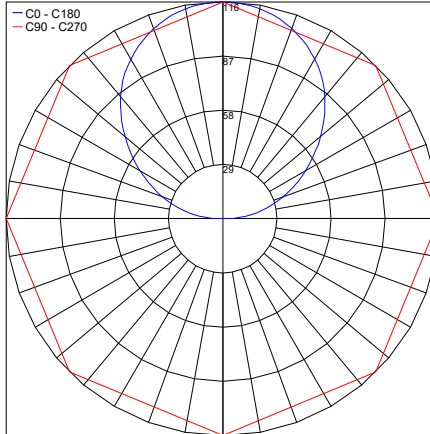
L1

Maximum Candela = 115.9



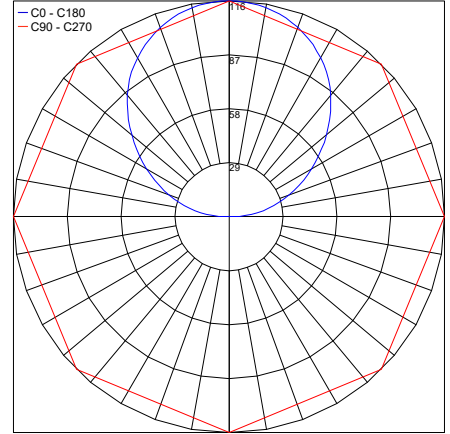
L2

Maximum Candela = 115.9



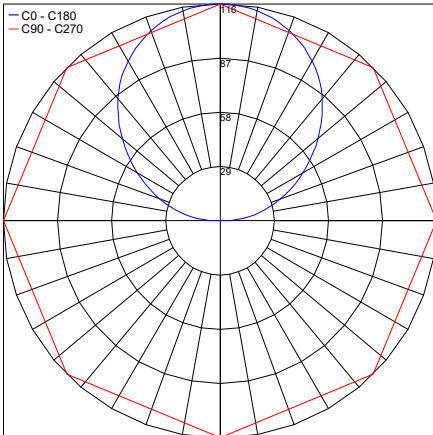
L3

Maximum Candela = 115.9



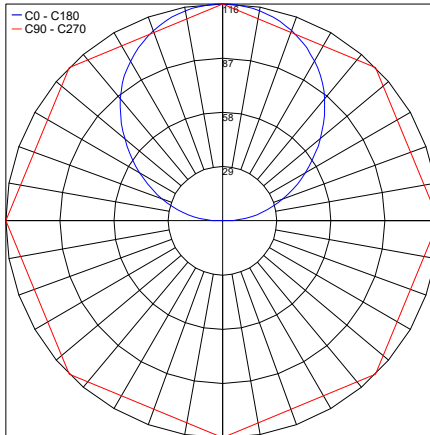
L4

Maximum Candela = 115.9



L5

Maximum Candela = 115.9



Job Name/Date:

Fixture Type Designation: