

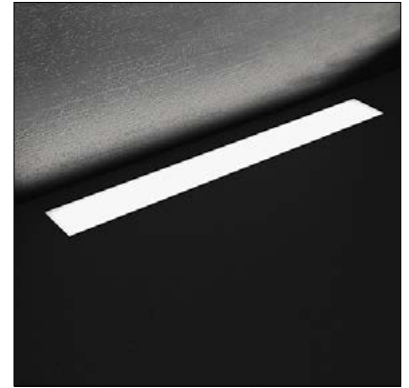
# MIN / MAX - LINEA IP68



datasheet

## SUITABLE FOR USE IN FOUNTAINS or POOLS

MIN / MAX Linea is a linear, IP68-rated LED luminaire for flush installation in fountains or swimming pools, both indoors or outdoors - submersible to 1 m (3.28'). It is available in 5 different sizes with sandblasted or antislip glass. Pressure switch on request. Can be ordered in aluminum IP67 version for in-grade non-fountain use.



Fixture Dimensions - See page 2

### TECHNICAL DATA

<b>Wattage / Input</b>	5W, 10W, 15W, 20W, 25W (24VDC)
<b>Power Supply</b>	Remote, not included. See page 2.
<b>Construction</b>	Body: Stainless Steel Lens: Extra Clear Tempered Glass Cable Length: 1.64'
<b>CCT</b>	2700K, 3000K, 4000K (RGBW or Tunable White on request)
<b>BUG Rating</b>	B0-U3-G0
<b>Delivered Lumens</b>	415-2015 lm (3000K)
<b>Efficacy</b>	80- 93 lm/W (3000K)
<b>Optics</b>	Diffuse
<b>Finishes</b>	Sandblasted or Antislip Glass
<b>Fixture Dimensions</b>	9.8", 19.7", 29.5", 39.4", 49.2" x 3.9" w x 1.6" h
<b>Color Consistency</b>	3-Step MacAdam
<b>IP Rating</b>	IP68 - Submersible to 5 m (16.4')
<b>Impact Resistance</b>	IK10
<b>Driveover Capacity</b>	Up to 11,000 lbs



### ORDERING INFORMATION

Example: LM07.103930.US.60.DI.BP. Accessories / Power Supplies ordered separately.

<input type="text"/>	<input type="text"/>	<input type="text"/>	<input type="text"/>
<b>Model No.</b>	<b>Finish</b>	<b>Optic</b>	<b>CCT</b>
LM07.103874.US (L1 - 5W)	60 - Sandblasted	DI - Diffuse	BC - 2700K
LM07.103875.US (L2 - 10W)	A1 - Antislip		BP - 3000K
LM07.103876.US (L3 - 15W)			BF - 4000K
LM07.103929.US (L4 - 20W)			
LM07.103930.US (L5 - 25W)			

Job Name/Date:

Fixture Type Designation:

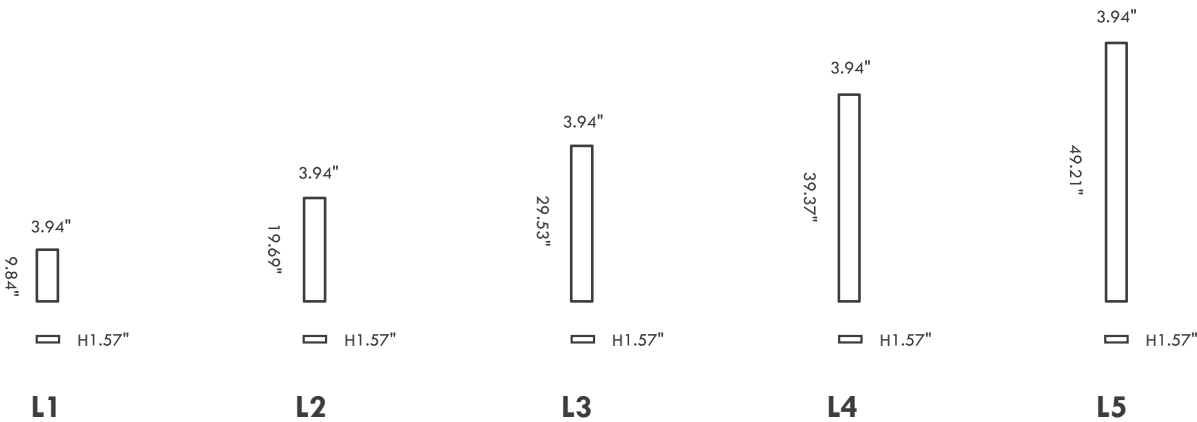
# MIN / MAX - LINEA IP68



SUITABLE FOR USE IN FOUNTAINS or POOLS

datasheet

## FIXTURE DIMENSIONS



## SUGGESTED POWER SUPPLIES

24VDC - FOR USE WITH FOUNTAIN / WATER FEATURES

Part Number	Description	Input/Output	# of Fixtures				
			L1	L2	L3	L4	L5
<a href="#">FPV-100000024</a>	Non-Dim	120-277VAC to 24VDC, 100W, Class 2, NEMA 4	1-16	1-8	1-5	1-4	1-3
<a href="#">FPV-100100024</a>	0-10V Dimming to 1.0%	120-277VAC to 24VDC, 100W, Class 2, NEMA 4	1-16	1-8	1-5	1-4	1-3

For other power supply options consult factory.

## ACCESSORIES - Installation



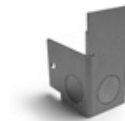
- LM20.104016** (L1 - 4.3" x 10.2" x 3.9" h)
  - LM20.104017** (L2 - 4.3" x 20.0" x 3.9" h)
  - LM20.104018** (L3 - 4.3" x 29.8" x 3.9" h)
  - LM20.104019** (L4 - 4.3" x 39.7" x 3.9" h)
  - LM20.104020** (L5 - 4.3" x 49.5" x 3.9" h)
- IP68 Housing



- LM20.104810**  
Light Source Extraction Tool Kit  
(for L1, L2)

- LM20.104646**  
Light Source Extraction Tool Kit  
(for L3, L4, L5)

## REQUIRED WITH HOUSING



- LM20.103977**  
Couple of closing end caps



- LM20.104813**  
Coupling joint for continuous lines

Job Name/Date:

Fixture Type Designation:

# MIN / MAX - LINEA IP68



SUITABLE FOR USE IN FOUNTAINS or POOLS

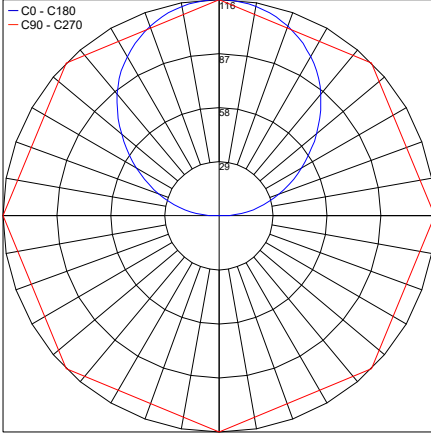
datasheet

## PHOTOMETRIC DATA

L1

Maximum Candela = 115.9

— C0 - C180  
— C90 - C270

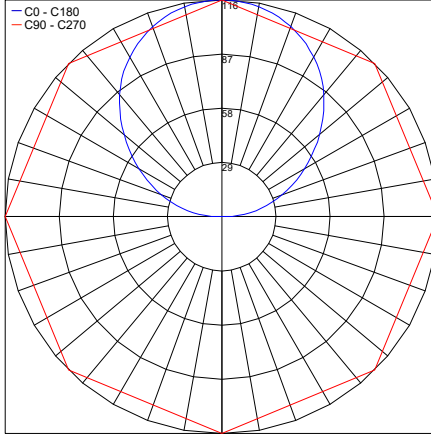


PHOTOMETRIC FILENAME : L1 LM07.103874.XX.DI.XX L250 IP68.IES

L2

Maximum Candela = 115.9

— C0 - C180  
— C90 - C270

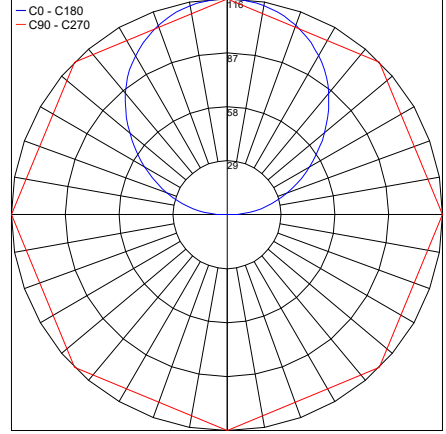


PHOTOMETRIC FILENAME : L2 LM07.103875.XX.DI.XX L500 IP68.IES

L3

Maximum Candela = 115.9

— C0 - C180  
— C90 - C270

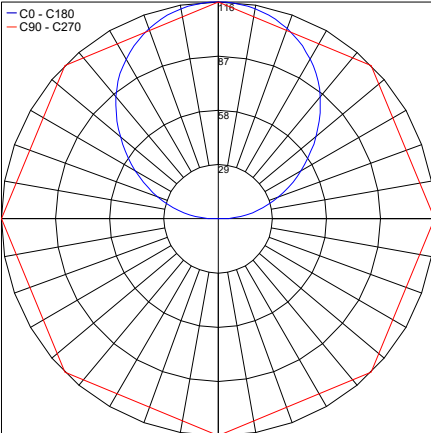


PHOTOMETRIC FILENAME : L3 LM07.103876.XX.DI.XX L750 IP68.IES

L4

Maximum Candela = 115.9

— C0 - C180  
— C90 - C270

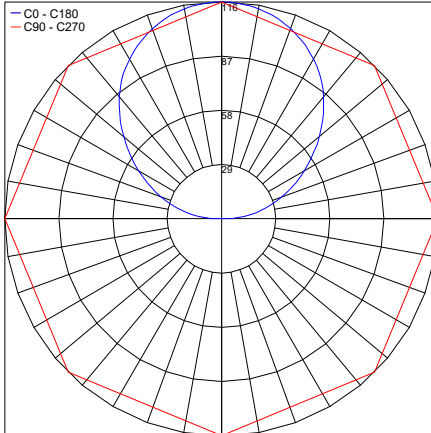


PHOTOMETRIC FILENAME : L4 LM07.103929.XX.DI.XX L1000 IP68.IES

L5

Maximum Candela = 115.9

— C0 - C180  
— C90 - C270



PHOTOMETRIC FILENAME : L5 LM07.103930.XX.DI.XX L1250 IP68.IES

Job Name/Date:

Fixture Type Designation: