

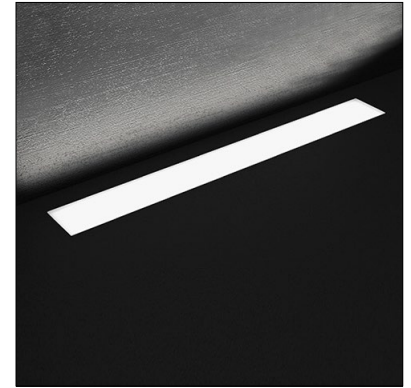
MIN / MAX - LINEA IP68



datasheet

SUITABLE FOR USE IN FOUNTAINS or POOLS

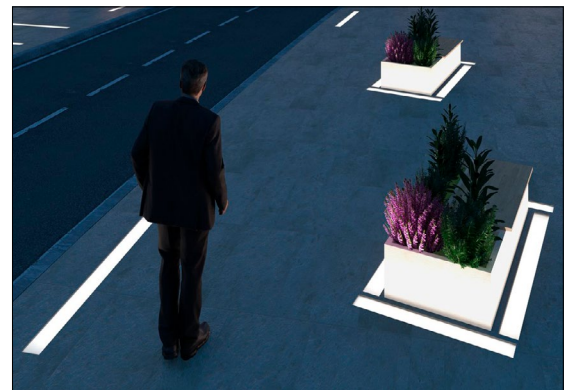
MIN / MAX Linea is a linear, IP68-rated LED luminaire for flush installation in fountains or swimming pools, both indoors or outdoors - submersible to 1 m (3.28'). It is available in 5 different sizes with sandblasted or antislip glass. Pressure switch on request. Can be ordered in aluminum IP67 version for in-grade non-fountain use.



Fixture Dimensions - See page 2

TECHNICAL DATA

| | |
|---------------------------|--|
| Wattage / Input | 5W, 10W, 15W, 20W, 25W (24VDC) |
| Power Supply | Remote, not included. See page 2. |
| Construction | Body: Stainless Steel Lens: Extra Clear Tempered Glass Cable Length: 1.64' |
| CCT | 2700K, 3000K, 4000K (RGBW or Tunable White on request) |
| BUG Rating | B0-U3-G0 |
| Delivered Lumens | 415-2015 lm (3000K) |
| Efficacy | 80- 93 lm/W (3000K) |
| Optics | Diffuse |
| Finishes | Sandblasted or Antislip Glass |
| Fixture Dimensions | 9.8", 19.7", 29.5", 39.4", 49.2" x 3.9" w x 1.6" h |
| Color Consistency | 3-Step MacAdam |
| IP Rating | IP68 - Submersible to 5 m (16.4') |
| Impact Resistance | IK10 |
| Driveover Capacity | Up to 11,000 lbs |



ORDERING INFORMATION

Example: LM07.103930.US.60.DI.BP. Accessories / Power Supplies ordered separately.

| | | | |
|---------------------------|----------------------|----------------------|----------------------|
| <input type="text"/> | <input type="text"/> | <input type="text"/> | <input type="text"/> |
| Model No. | Finish | Optic | CCT |
| LM07.103874.US (L1 - 5W) | 60 - Sandblasted | DI - Diffuse | BC - 2700K |
| LM07.103875.US (L2 - 10W) | A1 - Antislip | | BP - 3000K |
| LM07.103876.US (L3 - 15W) | | | BF - 4000K |
| LM07.103929.US (L4 - 20W) | | | |
| LM07.103930.US (L5 - 25W) | | | |

Job Name/Date:

Fixture Type Designation:

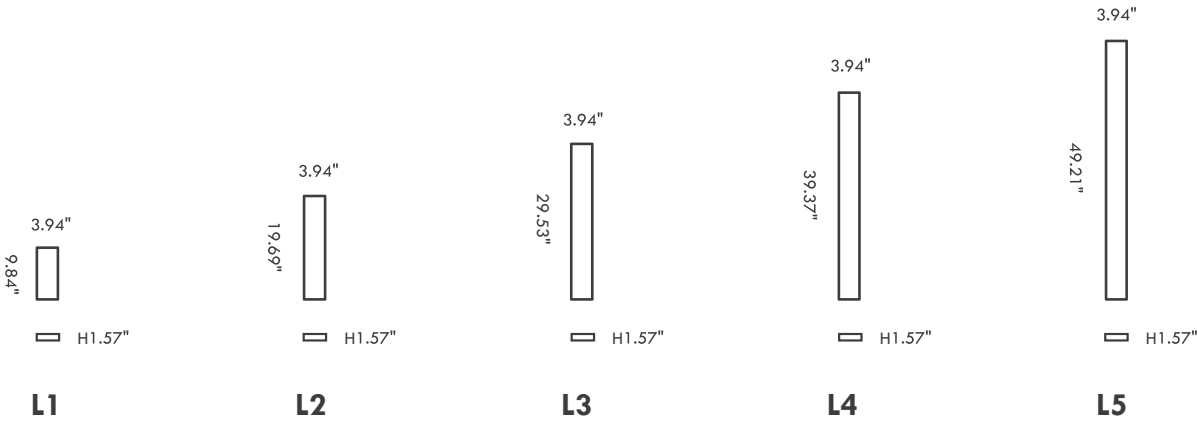
MIN / MAX - LINEA IP68



SUITABLE FOR USE IN FOUNTAINS or POOLS

datasheet

FIXTURE DIMENSIONS



SUGGESTED POWER SUPPLIES

24VDC - FOR USE WITH FOUNTAIN / WATER FEATURES

| Part Number | Description | Input/Output | # of Fixtures | | | | |
|-------------------------------|-----------------------|--|---------------|-----|-----|-----|-----|
| | | | L1 | L2 | L3 | L4 | L5 |
| FPV-100000024 | Non-Dim | 120-277VAC to 24VDC, 100W, Class 2, NEMA 4 | 1-16 | 1-8 | 1-5 | 1-4 | 1-3 |
| FPV-100100024 | 0-10V Dimming to 1.0% | 120-277VAC to 24VDC, 100W, Class 2, NEMA 4 | 1-16 | 1-8 | 1-5 | 1-4 | 1-3 |

For other power supply options consult factory.

ACCESSORIES - Installation



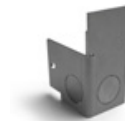
- LM20.104016** (L1 - 4.3" x 10.2" x 3.9" h)
 - LM20.104017** (L2 - 4.3" x 20.0" x 3.9" h)
 - LM20.104018** (L3 - 4.3" x 29.8" x 3.9" h)
 - LM20.104019** (L4 - 4.3" x 39.7" x 3.9" h)
 - LM20.104020** (L5 - 4.3" x 49.5" x 3.9" h)
- IP68 Housing



- LM20.104810**
Light Source Extraction Tool Kit
(for L1, L2)

- LM20.104646**
Light Source Extraction Tool Kit
(for L3, L4, L5)

REQUIRED WITH HOUSING



- LM20.103977**
Couple of closing end caps



- LM20.104813**
Coupling joint for continuous lines

Job Name/Date:

Fixture Type Designation:

MIN / MAX - LINEA IP68



SUITABLE FOR USE IN FOUNTAINS or POOLS

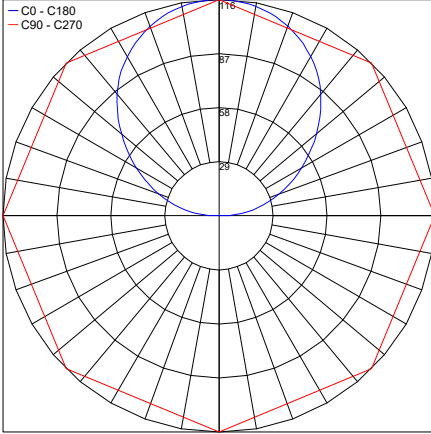
datasheet

PHOTOMETRIC DATA

L1

Maximum Candela = 115.9

— C0 - C180
— C90 - C270

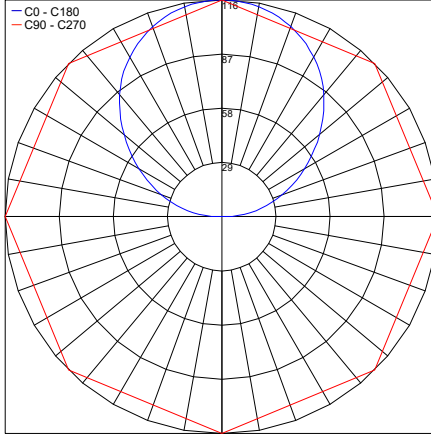


PHOTOMETRIC FILENAME : L1 LM07.103874.XX.DI.XX L250 IP68.IES

L2

Maximum Candela = 115.9

— C0 - C180
— C90 - C270

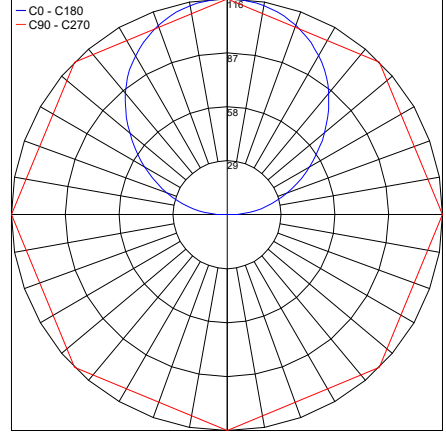


PHOTOMETRIC FILENAME : L2 LM07.103875.XX.DI.XX L500 IP68.IES

L3

Maximum Candela = 115.9

— C0 - C180
— C90 - C270

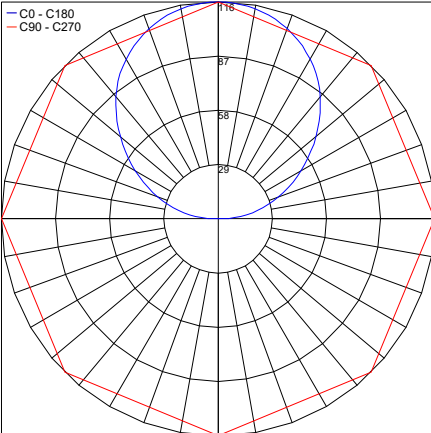


PHOTOMETRIC FILENAME : L3 LM07.103876.XX.DI.XX L750 IP68.IES

L4

Maximum Candela = 115.9

— C0 - C180
— C90 - C270

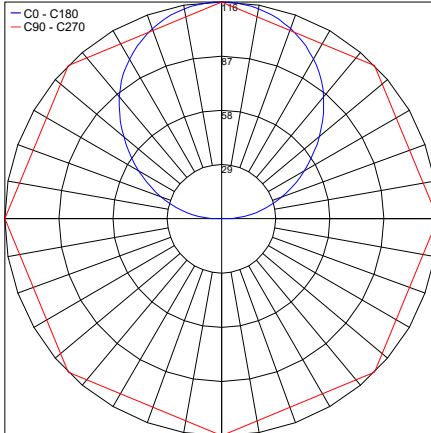


PHOTOMETRIC FILENAME : L4 LM07.103929.XX.DI.XX L1000 IP68.IES

L5

Maximum Candela = 115.9

— C0 - C180
— C90 - C270



PHOTOMETRIC FILENAME : L5 LM07.103930.XX.DI.XX L1250 IP68.IES

Job Name/Date:

Fixture Type Designation: